



ZONAL OFFICE – CHENNAI SOUTH
NO:55, ETHIRAJ SALAI, EGMORE,
CHENNAI – 6000008.

**TENDER DOCUMENT – TENDER FOR REPAIR RENOVATION WORK
AT INDIAN BANK, ZONAL OFFICE BUILDING,NO:55,
ETHIRAJ SALAI, EGMORE, CHENNAI – 600 008.**

PART-II PRICE BID

Ref.No: ZO:PRE:01:2025-26
Date : 19.02.2026

Name of the contractor:

.....
.....
.....

Last date of submission of tenders	20.03.2026 upto 15.00Hrs. at Indian Bank, Zonal Office – Chennai South No:55, Ethiraj Salai, Egmore Chennai – 600 008.
Date of opening Tender	20.03.2026 upto 15.30Hrs. at Indian Bank, Zonal Office – Chennai South No:55, Ethiraj Salai, Egmore Chennai – 600 008.
Cost Of Tender	Free Of Cost.

CONSULTANTS:

**M/S. ARUN ARCHITECTS,
NEW NO: U-12 OLD NO. U-27
CHENNAI 600 040.
PH : 044-42048346
MOBILE : 9444016095**

SCHEDULE OF QUANTITIES

CIVIL WORK

Sl.No	Description of Items	Qty	Rate	Per Unit	Amount (Rs)
1	<p>Painting the external surfaces with ASIAN PAINTS (Apex ULTIMA Protek with Base exterior wall Primer coat)or equivalent. The methodology of application is as below.</p> <p>Cleaning : Surfaces should be free from any loose paint, dust or grease, growth of fungus, algae or moss should be removed by wire brushing and Jet water washing ,followed by Asian paints smart care Bio block. When the underlying surface exhibits Chalkiness, inspite of thorough use an Asian paints exterior sealer. The contractor shall also make good all minor civil works apparently on the surfaces to be painted and no extra cost shall be paid by client. The rate shall also be inclusive of all scaffolding charges needed to carry out the work.</p> <p>FILLING FOR CRACKS: For filling cracks up to 3mm use Asian Paints crack seal.</p> <p>FILLING FOR HOLES AND DENTS: Use polymer modified cement sand mortar.</p> <p>Apply Ultima Protek base coat(self priming / undiluted coat) using (Brush / roller).</p> <p>Three coats of ultima protek top coat as per recommended application procedure (Brush / Roller)</p> <p>Note: The contractor shall procure the paint directly from the company only and shall submit copies of all invoices to the client Indian Bank on demand. The contractor shall also make available the warranty for the specified period as mandated by the company in their register.</p> <p>The rate shall also be inclusive of MS pipe Scaffolding that has to be erected dismantled & reassembled whenever/wherever required as per instructions of the client/Architects complete.</p>				
a	Exterior of building	57500		Sft	

Sl.No	Description of Items	Qty	Rate	Per Unit	Amount (Rs)
2	Providing & applying Premium plastic Emulsion paint of shade in minimum 2 coats including 2coats of putty and 1 coat of primer, filling up of "V" cracks with epoxy expandable putty to required depths, making good weak plastered / unplastered surfaces with cement plaster wherever required. Item to include Plaster of Paris, primer, palti & making good existing surface to receive new paint including cleaning on completion of painting work etc. complete in all respects.(The rate shall be inclusive of MS pipe scaffolding to be erected as per work specified & prevailing standards)	3200		Sft	
3	Providing & applying 1st quality Enamel paint of approved make, quality & shade. The rate shall include scrapping, levelling & preparing the surface with primer quote. Including grills	5250		Sft	
4	Chipping the Loosen Reinforced Cement Concrete surface and cleaning the rusted reinforcement and exposed surface by wire brush, mechanical device or any other established method and applying rust removing solution fosrac or equivalent of approved make and quality with cotton waste swab to the reinforcement and allowing to dry the same for 24 hours, brushing of loose particle and applying cementitious zinc rich 1st coat of bonding agent fosrac or equivalent Anti rust preventive coating of polymer and cement slurry in 1:1.5 proportion with soft brush without adding water including applying another coat of rust preventing after 4 hours allowing Air Curing for 48 hours then applying a priming cum bonding coat of polymer over the concrete surface & and additional steel provided before patching of damaged areas, using suitable tools and equipment etc. complete. The rate shall also be inclusive of suitable Scaffolding required to carry out the work.	750		Sft	

Sl.No	Description of Items	Qty	Rate	Per Unit	Amount (Rs)
5	<p>MICRO CONCRETE: Providing encasement to columns/beams/slabs etc., with free flow high strength non shrink micro concrete M- 35 using single cement micro concrete shrinkage components added with 100% by weight saturated dry stone dust In average 75mm thick, pouring, temping,Consolidating, curing etc. The water cement ratio should be maintained as per manufacturer's 1specifications to achieve dense solid mass. The Micro concrete shall be poured properly in slurry tight prefixed holding boards formwork, fixed properly in line, level and in the required size/shape and well oiled etc. The air bubbles, if any shall be removed by tapping the boards and removing the same after 24 hours, curing the micro-concrete thoroughly for 14 Days etc. complete. The rate shall be inclusive of shuttering, strutting, curing etc. complete.The rate shall also be inclusive of suitable Scaffolding required to carry out the work.</p>	750		Sft	
6	<p>Providing Plastering in CM 1:4 as a structural repair work for damaged portions of the elevational fascia including walls / Beams /Sunshades, window ,Lintels etc. before the commencement of exterior painting works. The rate shall also be inclusive of suitable Scaffolding required to carry out the work.</p>	4200		Sft	
7	<p>Removing the Vegetation,Bushes,Trees in the fascia of walls,sunshade,Terrace in deep manner before the commencement of exterior painting works. and providing the Acid treatment for that area to stop future growth of vegetation</p> <p>The rate shall also be inclusive of suitable Scaffolding required to carry out the work.(Note:Contractor has to visit the site to assessment the quantum of work)</p>			LS	
8	<p>Scrapping the existing surface of compound wall & Canopy ceiling apply one coat of primer & 2 coats of approved colour of exterior emulsion paint (Asian Paints/Nerolac / Nippon etc.)</p>	3500		Sft	

Sl.No	Description of Items	Qty	Rate	Per Unit	Amount (Rs)
9	Dismantling the existing single line brickwork over the all RCC sunshade and providing waterproofing plastering of CM1:3, 12mm to 20mm over the damaged sunshade with necessary formation of slope without waterlogging Cost include all wastages ,transports,loading & unloading charges, labour, marking, scaffolding.materials tools etc	4000		Sft	
10	Preparing the surfaces should be free from any loose paint, dust or grease, growth of fungus, algae or moss should be removed by wire brushing and Jet water washing & providing Drilling holes and fixing nozzles of 12mm dia with La Terra Plug @500 mm c/c at an inclined angle.The horizontal and grouting net cement slurry admixed with shirnk compensating compound Porex 100@ 210gms/50kg bag of cement through the nozzles under mechanical pressure through a grouting pump.Removing the Nozzles and filling up the holes by La Bond SBR Latex modified 1:4 cemnt: sand Mortor	300		Nos	
11	Providing packing to damaged joints of weathering coarses tiles in terrace thoroughly completely in suitable tiles grouting completely filing of voids (suitably mixed with waterproofing compound) &finished with a layer of heat resistant Thermatek coating or equivalent.(as per vendor specifications)	10300		Sft	

Sl.No	Description of Items	Qty	Rate	Per Unit	Amount (Rs)
12	<p>Providing Waterproofing Plastering on Roof top of EB room with CM1:3, 12mm to 20mm as per the site condition, mixed with water proof compound of approved make, chemical preparation, Application ,coverage area and mixing as per manufacture specifications and standards. Before applying the surface to be free from oil, greese, wax,dirt or any other form of foreign matters. Cost includes providing slope for water drain. Cost include all wastages ,transports, loading & unloading charges, labour, marking, scaffolding. materials tools etc. Measurement shall be measured in actual applied area only in Sft</p>	450		Sft	
13	<p>WPC Doors with frames for EB Room - Supplying and fixing 30mm Solid core WPC door to be fixed WPC door frames with all necessary fixing accessories, arrangements etc. Door size 3'x7';, the doors are finished with 1coat wood primer, 2coats of enamel paint approved colour. Cost include of necessary SS hard wares 3-hinges of 100mm, padlock, door stopper and 2 handles of 180 mm Complete as per instructions of the architect /bank engineer</p>	2		No	
14	<p>Dismantling the existing loosen Cement plastering finish of water tank & plastering the tank completely in CM 1:4(suitably mixed with waterproofing compound).The rate shall also be inclusive of suitable Scaffolding required to carry out the work.</p>	800		Sft	
15	<p>Mosaic Polishing: Thoroughly cleaning the surface to remove dirt, debris, and any previous coatings of existing mosaic tiles followed by Filling any gaps or holes with white cement mixed with pigment to match the mosaic color. Polishing with finer abrasive pads by mechanical /man power Final buffing with wax polish to enhance shine and protect the surface. Removing all slurry, cleaning with water, and cleaning with a soft cloth to ensure a spotless, finished surface Including all labor, machinery (electric polishing machines), consumables, and safety measures required to complete the work as directed by the Engineer-in-Charge. Rate shall be inclusive of all materials, labour transport,etc complete.</p>	660		Sft	

Sl.No	Description of Items	Qty	Rate	Per Unit	Amount (Rs)
16	Construction of masonry chamber brickwork in CM 1:6 of External size of 3'-0"x 3'-0" upto a depth of 3'-6" to 4'-0" using locally available best ground moulded bricks including socking, raking the joints, filling the gaps etc complete.	90		Cft	
17	Providing and laying required thickness of controlled plain cement concrete of PCC 1:4:8 grade using over 40mm for raising the level and ramming with iron rammer, compacting, levelling, curing , shuttering, dewatering wherever necessary, the cost of all materials, labour, leads and lifts, tools etc., complete as per specification.	15		Cft	
18	Providing plastering to the brickwork masonry chamber with CM 1:4 etc complete.	80		Sft	
19	Supply & installation of FRP(Fibre reinforced plastic) make Manhole cover along with frame of size 2'-0" x 2'-0" for the manhole chambers as per specifications.	7		No	
20	Supply & installation of UPVC windows 2to 3-track Minimum 2.5mm Gauge (Medium) with 6mm glass with all fittings like rollers, locking arrangement, beading, handle etc. & required hardware of approved quality, etc & fo ventilators Adjustable UPVC louver system of same guage to have a 4" wide 6mm frosted glass for privacy. Provision for exhaust fan to be made and fixed frosted glass to be provided to adjustant to of approved manufacture & Sections(DIMEX/Fenesta) etc. Application of silicon sealant from inside / outside of Dowcorning / GE or equivalent. (The rate shall be inclusive of MS pipe scaffolding to be erected as per work specified & prevailing standards)	5250		Sqft	
21	Dismantling the existing ventilator grill from the basement and finishing the exposed brickwork with plastering and painting of 2 or more coats.& refixing the same grill for the accurate opening after necessary alteration to the grill by cutting out the extra rod and finishing. The item includes to finish the grill with 2 or more coats of enamel paint. etc complete.	200		Sft	

Sl.No	Description of Items	Qty	Rate	Per Unit	Amount (Rs)
22	TOILET RENOVATION				
22.1	Dismantling of floor Tiles/Dado				
	Dismantling marble, granite, kota, marble mosaic, ceramic tile flooring & dado including skirting and excavation up to slab in plinth wherever required, etc. In a manner which facilitates laying of new flooring without undue extra expense. The rate shall include removal of debris from site. The work shall also involve removal of all water and waste lines including sanitary fittings, GI pipes, etc complete.	9600		Sqft	
22.2	Providing and laying RCC slab basin counter in 1:1.5:3 using 20mm size blue metal, placing in position compacting, trawelling, ramming and curing rate include cost of all labour materials necessary tools and curing. Rate include cost of supplying steel(4 nos #10,8mm stirrups) fabricating and placing in position of steel reinforcement. Cost include necessary cut outs for placing the washbasin. The slab to be finished with 20mm thick Black granite top and fascia with proper necessary cutouts for the fixing of washbasin.	100		Sft	
22.3	Water Proofing Toilet: Providing and water proofing as under- Prepare the surface of Toilet floor and walls upto 450mm height applying Fosroc Liquid applied cement based waterproofing systems Brushbond Elastomeric acrylic modified cementitious coating for concrete and masonry surface in 2 coats as per manufacturer specifications. Plastering with cm 1:3, 20 mm thick mixed with water proof admixture of fosroc conplast or any suitable admixture as per manufacturer specification including rounding off junction of vertical and horizontal surface. Complete with standard specifications. Cost include all accessories like wastages, transports, loading, unloading charges, chipping the existing plastering, labours, materials, tools,curing, approved water proofing compound and etc. Measurement shall be measured in applied area only in SFT. Pond test for min 48 hrs to be carried out. Warranty of 5 years to be given Item to include 15mm dia drain, spout pipe	1900		Sft	

SI.No	Description of Items	Qty	Rate	Per Unit	Amount (Rs)
22.4	Supply and filling brick jelly concrete using best quality broken brick jelly of 20 mm of using 1:5 Cement mortar , curing, finishing. as required as per site, after completing plumbing lines, water proofing platering etc. Complete as per instructions of the architect /bank engineer.	1900		Cft	
22.5	WPC Doors with frames for toilet - Removing the existing door & Supplying and fixing 30mm Solid core WPC door to be fixed WPC door frames with all necessary fixing accessories, arrangements etc. Door size 761.6mm/900mm x 2135mm,. The doors are finished with 1mm thick approved Waterproof laminate on both sides. Cost include of necessary SS hardwares 3-hinges of 100mm, padlock, door stopper and 2 handles of 180 mm Complete as per instructions of the architect /bank engineer	32		No	
22.6	TOILET GLAZED WALL TILE- Supplying and fixing of Glazed wall tiles of size (300mm x 450mm) of approved colour, design and pattern shall be fixed with 11.6mm thick cement paste for base course and applied over the existing wall, fixing in position with neat line and level and pointing with white cement mixed with colouring pigments and etc. Corner shall be finished with PVC beading of approved size. Cost include wastages, cutting, tools, transport, lead, lift, curing, cleaning the area time to time, loading, unloading, materials and etc. Complete as per instructions of the Architect.(Basic rate Rs.50/Sft after discount)	8500		Sft	

Sl.No	Description of Items	Qty	Rate	Per Unit	Amount (Rs)
22.7	ANTI SKID TILES FINISH IN TOILET- Supplying and fixing of Anti-Skid Toilet floor tile of size (300mm x 300mm) of approved colour, design and pattern shall be laid over 20mm thick cement mortar 1:3 (One cement and Three sand) base mortar, laying in position, slope for water drain flow and pointing with white cement mixed with colouring pigments etc. Cost include wastages, cutting, tools, lead, lift, transport, curing, cleaning the area time to time, loading, unloading, materials and etc. Complete as per instructions of the Architect. (Basic rate Rs.45/Sft after discount)	1900		Sft	
22.8	VITRIFIED FLOORING Providing and fixing VITRIFIED Tiles of approved make, shade and pattern as approved by Bank/ Architect. In CM 1:4 in proper line and level with out spacers for maintaining the grid lines. Rate shall be inclusive of providing and laying necessary PCC and Cement Mortar for a thickness of 3" and joint filling compound of the same shade of the tiles and including pop covering on the new flooring for the protection of tiles with base covering plastic. Including skirting of 4" height.(Rate not less than Rs.60/Sft after discount)	900		Sft	
22.9	EUROPEAN WATER CLOSET- Supplying and fixing approved make Wall hung European Water Closet (EWC) fixing in wall dado including all the necessary all materials, labour necessary accessories etc complete Parryware Wall Mounted White Closet Zest N C021I (540 x 340 x 375mm) RBD-230mm or Equivalent make.	24		No	
22.10	Supplying and fixing approved make Concealed Flush tank Parryware Linea Plus Concealed Cistern with Half Frame Code: E812599 or equivalent make item to include the work to conceal the water tank, including dual flushing buttons Parryware Linea Plus Push Plate – Round Code: E8220A1 or equivalent make , erection of Brick wall to conceal the tank necessary all materials, labour necessary accessories etc complete	24		No	

Sl.No	Description of Items	Qty	Rate	Per Unit	Amount (Rs)
22.11	Supply & Fixing of White or any pastel colour glazed urinal Parryware New Magnum C0583* (Combo Set) (380 x 405 x 590mm) or Equivalent make with one pair of concealed non corrosive brackets, C.P.spreader, Screen mat connecting tube, waste coupling with domen grating, etc. , installing the urinal to plumb in compete with all accessories, testing, cutting walls wherever required, restoring the same to their original conditions with required materials all complete	16		No	
22.12	Supply and fixing, urinal partition Parryware Magnum C0571 (130 x 345 x 675mm) or Equivalent make fixing to wall dado using 4 nos. of suitable chromium plated brackets with C.P. bolts, nuts, washers, cutting to required shape, with approved pattern etc. complete. (Sample of material to be produced for approval by project manager)	16		No	
22.13	OVER COUNTER BOWL BASIN: Providing and fixing of Over Counter Bowl Basin Parryware Refine C8974 (410 x 410 x 145mm) or Equivalent make including necessary fixing accessories and arrangements, Connection hose 610mm length, waste coupling, waste pipe etc., complete in all standards. Cost include all necessary fixing accessories such as tools, materials, labours, transport, loading, unloading charges and etc. Complete as per instructions of the Architect/bank engineer.	16		No	
22.14	Supplying and fixing the Two way bib cock Parryware Pruno Collection Two Way Bib Cock T5834A1 or Equivalent make and wall flange with all necessary fixing accessories, arrangements and etc. Complete as per instructions of the Architect.	24		No	
22.15	Supplying and fixing the Health Faucet Parryware Simline easy cleaning E8354A1 or Equivalent make with wall hook and long flexible hose with all necessary fixing accessories, arrangements and etc. Cost include tools, materials, hardwares, wastages, lead, lift and etc. Complete as per instructions of the Architect.	24		No	

Sl.No	Description of Items	Qty	Rate	Per Unit	Amount (Rs)
22.16	Supplying and fixing 15mm CP Parryware Uno Exposed Part of Flush Cock (Compatible with T9823A1) T982UA1 or Equivalent make Flush Cock for Urinal. with all necessary accessories, teflon tape, flange etc complete	16		No	
22.17	Supplying and fixing 12” Parryware T3201A1 Bottle Trap or Equivalent make. with all necessary accessories, teflon tape, flange etc complete	16		No	
22.18	FLOOR TRAP: Supplying and Fixing position PVC floor trap with Best stainless steel gratings of approved brand and quality of size 110mm dia inlet, 75mm and 50mm dia outlet with all necessary fixing accessories, arrangements and etc. Cost include labour, tools, materials, lead, lift, removing the existing floor trap, cutting the floor slab, loading, unloading and etc. Complete as per instructions of the Architect.	50		No	
22.19	Supplying and fixing 15mm CP Parryware Pruno Collection Swan Neck Pillar Cock T5803A1 or Equivalent make pillar cock for wash basin. with all necessary accessories, teflon tape, flange etc complete	16		No	
22.20	Supplying and fixing 15mm CP Parryware Pruno Collection Angle Valve T5807A1 or Equivalent make angle valve with CP connection Parryware or equivalent make	70		No	
22.21	Supplying and fixing chromium plated towel rod of approved make 20mm dia, 600mm long with chromium plated concealed brackets fixing to wall dado using suitable size non-corrosive screws, PVC plugs etc. complete. Parryware OR Euivalent make	8		No	
22.22	Supplying and fixing 6mm thick, 600x1800 mm approved make clear mirror made out of SS Stud and 12mm thick BWR plywood back and finished neatly. Rate should be inclusive of all necessary fixtures and fittings.	4		No	
22.23	Supplying and fixing 6mm thick, 1200x900 mm approved make clear mirror made out of SS Stud and 12mm thick BWR plywood back and finished neatly. Rate should be inclusive of all necessary fixtures and fittings.	4		No	

Sl.No	Description of Items	Qty	Rate	Per Unit	Amount (Rs)
22.24	Dismantling the existing 6" Cement pipe for Rainwater in order to fix the PVC pipe.Rate inclusive of scaffolding and clearing the debris from the site.(aprox 320RM)			Ls	
22.25	PVC SANITARY PIPES- Providing and fixing PVC pipes fixed for toilet waste and sewage line fixing in position and connect to the existing plumbing line or nearest manhole chamber with all necessary fixing accessories, arrangements and etc. Cost include cutting wall or concrete surface fixing to walls or brackets using all types of MS clamps, core cutting if any making joints using solvent cement solution, making grooves in masonry to conceal the pipes, restoring damaged portions with CM 1:4 and jelly, to their original condition, packing work and necessary slope, all specials like tee joint, reducer, door elbow, door tee, "u" bend for water seal and etc., conducting leak test in all floors heights and cart away the debris from the site, all necessary fixing accessories such as civil works, tools, materials, cutting, fittings, scaffolding, labours, transport, loading, unloading charges, lead & lift to all floors and etc. Complete as per instructions of the Architect.				
A	As above specification for PVC 75mm dia (6 kg/cm ²)	140		RM	
B	As above specification but for PVC 110mm dia (6 kg/cm ²)	120		RM	
C	As above specification but for PVC 150mm dia (6 kg/cm ²)	320		RM	

Sl.No	Description of Items	Qty	Rate	Per Unit	Amount (Rs)
22.26	UPVC PIPES SDR 11(OUTER FROM TANK AND WATERLINES)- Providing and fixing approved make UPVC pipes SCH 40 with ISI brand fitting for External or internal water line shall be fixed in the walls, ceiling, parapet walls, slab, column or any RCC structure in all floor levels connecting tank outlet pipes with all necessary fixing accessories, solvent cement, all types of required clamp, core cutting if any, arrangements and etc. including cutting, threading, cutting chassing in walls and concealing the pipes in wall wherever laid inside restoring damaged portions with CM 1:4 to their original condition. Cost including the necessary UPVC specials like Tee joint, elbow, socket, end cap, reducer, union, tank nipple, metal strap, solutions, coupler and etc. The pipe line should be fixed with GI Bracket with anchor fastner and "U" clamp of required length and size. concealed lines in the walls, floors and etc, wherever required at site and cart away the debris from the site. Cost include all necessary fixing accessories , all civil works, tools, cutting, fitting, wastages, materials, scaffolding, labours, sealing the joints, conducting leak test in all floors heights, commissioning, transport, loading, unloading charges, lead & lift to all floors and etc. Complete as per instructions of the Architect.				
A	As above specification for UPVC 20mm dia SDR 11	200		RM	
B	As above specification but for UPVC 25mm(1") dia SDR 11	180		RM	
C	As above specification for UPVC 32mm dia SDR 11	140		RM	
D	As above specification but for UPVC 40mm(1 1/2") dia SDR 11	160		RM	
23	Supply & installation of 40mm Ball Valve as per the specifications	10		No	
24	Supply & installation of MS Ladder at terrace to water tank of Width 3'-0" to a height of 12' length approx.. having a steps equal interval including 2 coats of Synthetic enamel paint over one coat of Primer.Work to involve all civil work to mount the MS ladder etc complete.	350		Kg	

SI.No	Description of Items	Qty	Rate	Per Unit	Amount (Rs)
25	Buy back for removing & taking away the Existing Aluminum Window (Sliding Type) & ventilator in all floors (The rate shall be inclusive of MS pipe scaffolding to be erected as per work specified & prevailing standards)	-5250		Sft	
Total Excluding GST					

Place:
Date:

Signature of contractor with
seal

LIST OF TYPE AND MAKE OF MATERIALS TO BE USED

Civil & Interior:

1	Cement	Ultra Tech / Coromandel / ACC / Dalmia.
2	Steel	Sail / Jindal / RINL/ Tisco
3	Vitrified Tiles	Jhonson / RAK/ Kajaria / Nitco / Euro
4	Ceramic Tile	Jhonson / Kajaria / Somany / Nitco
5	Tile Fixing Adhesive	Sika / Pidilite / Bal Endura Fosroc / BASF
6	Marine Pywood (IS710)	Century / Greenply /Kitply /Archidply
7	BWR grade phenol bonded plywood (S 303)	Century / Greenply / Sharon Ply / Archidply
8	Particle board	Greenply/ Archid / Merino / Duro
9	Block Board	Century / Greenply / Swastik
10	Flush Doors	Century / Kutty / Green ply
11	Fibre Board (MDF, LDF)	Century / Novapan/ Swastik
12	P.O.P	Gyproc India / India Gypsum / Saint Gobain
13	Putty	Birla Wall Care / JK Wall Putty / Asian
14	Laminates	Greenlam / Merino / Century / AICA
15	Handles	Godrej / Hafele /Dorma
16	Glass	Saint Gobain / Float Glass India (Asahi) / Modigaurd.
17	Screws	GKW / Ebco / Oxidised.
18	Hardware (Hinges & others)	Godrej / Hafele / Dorma /EBCO
19	Adhesive for fixing laminate	Fevicol SH/ Araldite of Ciba Geigy / Bal Endura / Pidilite.
20	Locks	Godrej /Ebco / Harrison / Dorset.
21	Wood Preservative	Bison by British paints or approved equivalent.
22	Cement Primer	Berger / Nippon / Asian /Nerolac paints
23	Acrylic Emulsion paints	Berger / Nippon / Asian /Nerolac paints
24	Enamel paints	Berger / Nippon / Asian /Nerolac paints
25	Wood primer	Berger/Asian/ ICI Dulux
26	Aluminium sections	Hindalco / Jindal / Nelco
27	Curtain Rods	Vista/ Trac/ MAC
28	Drawer - telescopic	Godrej / Hafele/ Dorma / EBCO

Plumbing:

1	Cast Iron Pipes and fittings (ISI approved)	NECO / Raj iron Foundry / Kapilansh/ Kajeco
2	CPVC pipes and Fittings	Ashirwad / Flowguard -Astral / Supreme
3	SWR P VCI UPVC Pipes and Fittings	Finolex Supreme / Prince/ Polypack /Jindal
4	CP Brass Fittings	Jaguar/ Parryware

5	Floor Drain Fixture, Rain Water Outlets & Channel Gratings	Supreme /ACO/ GMGR/ Neer
6	C.P. Grating for Floor Trap	GMGR I Chilly / Viking
7	GI/ M.S Pipes (IS: 1239 and IS:3589)	Jindal / Swastik / Surya /Tata
8	Pipe clamp & supports	Chilly / Supreme / Euroclamp
9	HDPE Pipe	Duraline/ Kimplas /Reliance
10	Butterfly Valve	Audco / Danfoss / Honeywell / Sant
11	Check Valve– Wafer Type	Advance/ Danfoss / Sant / Kirlosker
12	Anchor bolts	Fischer / Hilti

Note –

1. Materials mentioned in the specification shall be used for the work. If specified material is not available prior approval of the Employer shall be taken to use other brands.
2. Preference of makes, supply of items should be consulted with client/consultant before effecting of supply.

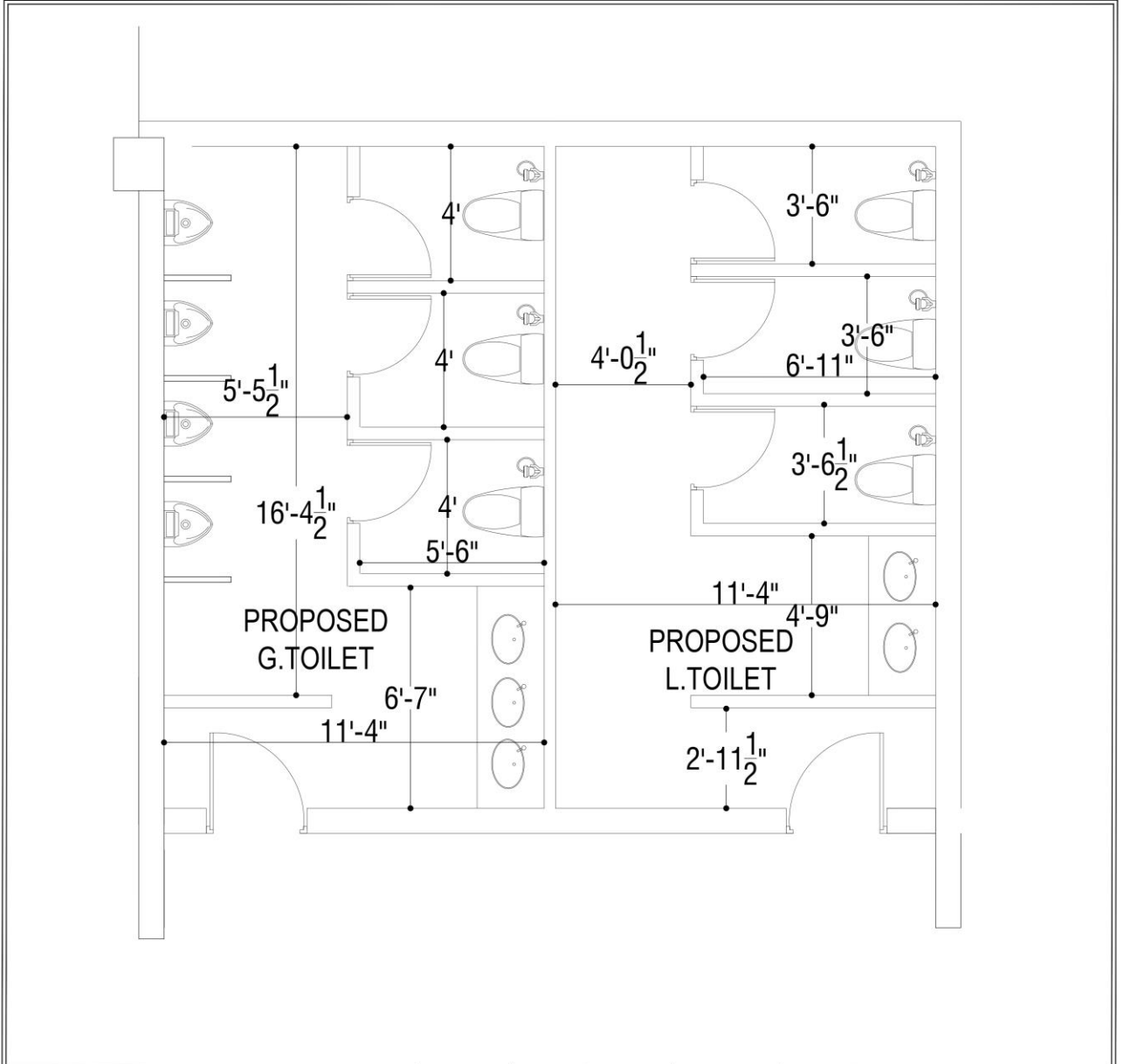
NAME AND ADDRESS OF THE CONTRACTOR:


SIGN & SEAL OF THE CONTRACTOR:

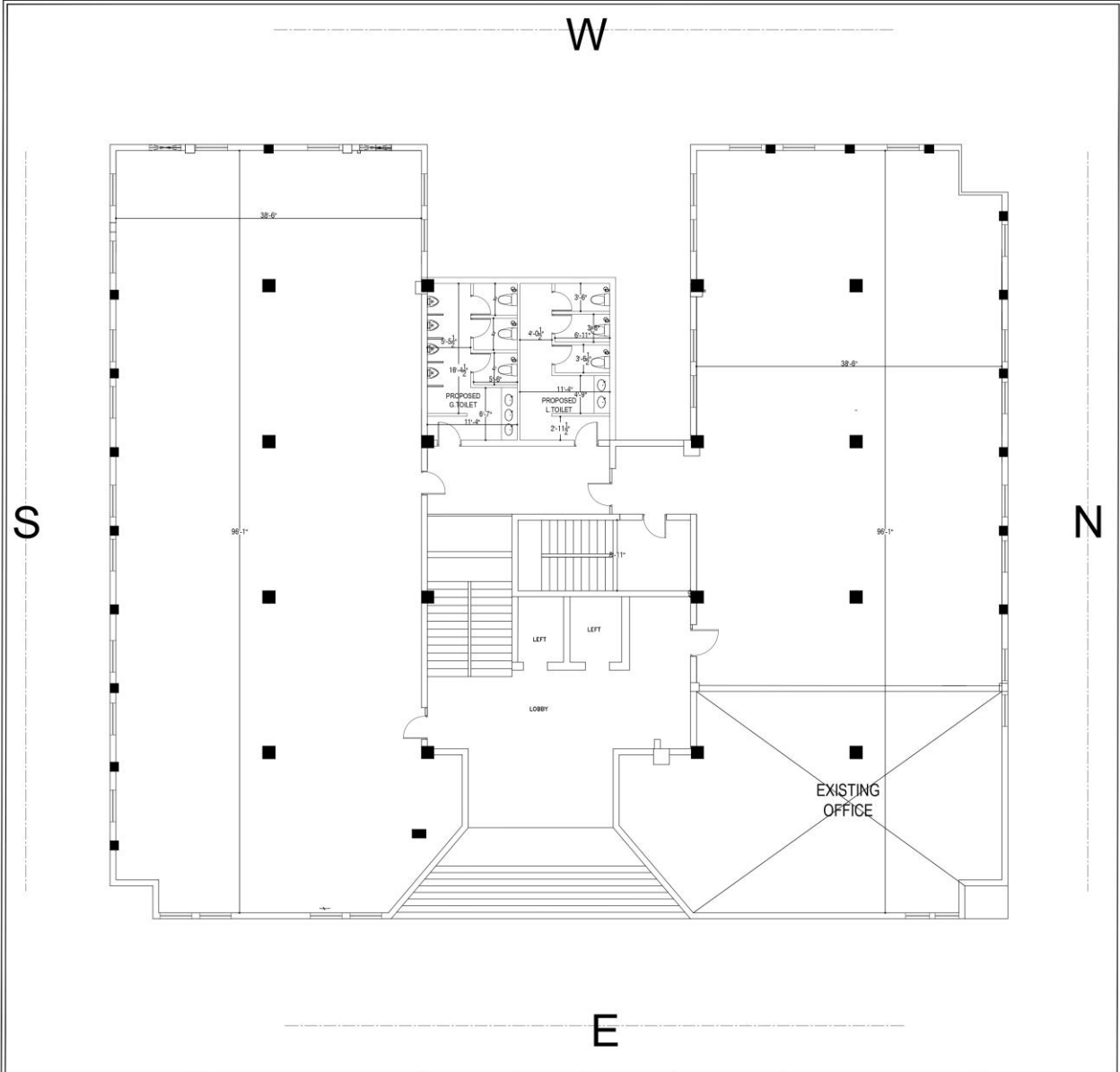
Date:

Place:





CLIENT INDIAN BANK	DRAWN ROCKY	DATE 27.01.2026	DRAWING NO:	CHECKED BY:	CONSULTANTS:
PROJECT Plan showing the proposed Toilet layout for Indian Bank Zonal Office at ethiraj salai, Chennai.	SCALE N.T.S	REVISION DATE	PROJECT NO:	APPROVED BY:	M/S ARUN ARCHITECTS New NO: U-12, Old nO: U-27 10TH STREET, ANNA NAGAR, CHENNAI - 40 PH: 044 - 7968 4926
DRAWING TITLE: TOILET TYPICAL FLOOR PLAN			NORTH: 		



CLIENT INDIAN BANK	DRAWN ROCKY	DRAWING NO.:	CHECKED BY:	CONSULTANTS : M/S ARUN ARCHITECTS New NO: U-12, Old nO: U-27 10TH STREET, ANNA NAGAR, CHENNAI - 40 PH: 044 - 7968 4926
	DATE 27.01.2026	PROJECT NO.:	APPROVED BY:	
PROJECT Plan showing the proposed layout for Indian Bank Zonal Office at ethiraj salai, Chennai.	SCALE N.T.S	DRAWING TITLE: GROUND FLOOR PLAN TYPICAL FLOOR PLAN		NORTH: 
	REVISION DATE			