

TABLE-1: TYPICAL FLOOR BEAM RC SCHEDULE

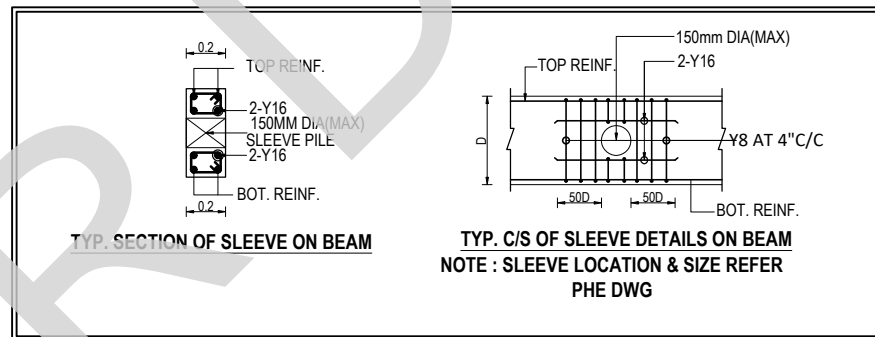
BEAM ID	SIZE (mm)		BOTTOM		LHS GRID	TOP			RHS GRID	STIRRUPS		
	WIDTH	DEPTH	STRAIGHT	CURTAIL		LHS EXTRA	STRAIGHT	RHS EXTRA		LHS	MIDDLE	RHS
RB-01	200	550	2-Y16	2-Y12	A	2-Y16	2-Y16	2-Y16	B	2L-Y8 AT 100C/C	2L-Y8 AT 150C/C	2L-Y8 AT 100C/C
RB-02	200	550	2-Y16	-	B	2-Y16	2-Y16	2-Y16	C	2L-Y8 AT 100C/C	2L-Y8 AT 150C/C	2L-Y8 AT 100C/C
RB-03	200	550	2-Y16	-	C	2-Y16	2-Y16	-	D	2L-Y10 AT 100C/C	2L-Y10 AT 100C/C	2L-Y10 AT 100C/C
RB-04	200	550	2-Y16	-	D	-	2-Y16	-	F	2L-Y8 AT 200C/C	2L-Y8 AT 200C/C	2L-Y8 AT 100C/C
RB-05	200	550	2-Y16	-	C	-	2-Y16+2-Y16	-	D	2L-Y10 AT 100C/C	2L-Y10 AT 100C/C	2L-Y10 AT 100C/C
RB-06	200	550	2-Y16	-	B	-	2-Y16	-	C	2L-Y8 AT 200C/C	2L-Y8 AT 200C/C	2L-Y8 AT 200C/C
RB-07	200	550	2-Y16	-	C	-	2-Y16	-	D	2L-Y8 AT 200C/C	2L-Y8 AT 200C/C	2L-Y8 AT 200C/C
RB-08	200	550	2-Y16	2-Y12	C	2-Y12	2-Y16	2-Y12	F	2L-Y8 AT 100C/C	2L-Y8 AT 150C/C	2L-Y8 AT 100C/C
RB-09	200	550	2-Y12	-	-	-	2-Y12	-	B	2L-Y8 AT 200C/C	2L-Y8 AT 200C/C	2L-Y8 AT 200C/C
RB-10	200	550	2-Y16	-	C	-	2-Y16	-	D	2L-Y8 AT 100C/C	2L-Y8 AT 100C/C	2L-Y8 AT 100C/C
RB-11	200	550	2-Y16	-	D	-	2-Y16	-	E	2L-Y8 AT 100C/C	2L-Y8 AT 100C/C	2L-Y8 AT 100C/C
RB-12	200	550	2-Y16	-	E	-	2-Y16	-	F	2L-Y8 AT 100C/C	2L-Y8 AT 100C/C	2L-Y8 AT 100C/C
RB-13	200	550	2-Y12	-	-	-	2-Y12	-	-	2L-Y8 AT 200C/C	2L-Y8 AT 200C/C	2L-Y8 AT 200C/C
RB-14	200	550	2-Y20	-	-	-	2-Y20	2-Y20	B	2L-Y8 AT 100C/C	2L-Y8 AT 100C/C	2L-Y8 AT 100C/C
RB-15	200	550	2-Y20	-	B	2-Y20	2-Y20	-	C	2L-Y8 AT 100C/C	2L-Y8 AT 150C/C	2L-Y8 AT 100C/C
RB-16	200	550	2-Y20	-	C	-	2-Y20	-	D	2L-Y8 AT 100C/C	2L-Y8 AT 100C/C	2L-Y8 AT 100C/C
RB-17	200	550	2-Y20	-	D	-	2-Y20	-	E	2L-Y8 AT 100C/C	2L-Y8 AT 100C/C	2L-Y8 AT 100C/C
RB-18	200	550	2-Y20	-	E	-	2-Y20	-	F	2L-Y8 AT 100C/C	2L-Y8 AT 100C/C	2L-Y8 AT 100C/C
RB-19	200	550	2-Y20	-	A	2-Y16	2-Y20	-	B	2L-Y10 AT 100C/C	2L-Y10 AT 150C/C	2L-Y10 AT 200C/C
RB-20	200	550	2-Y12	-	-	-	2-Y12	-	-	2L-Y8 AT 200C/C	2L-Y8 AT 200C/C	2L-Y8 AT 200C/C
RB-21	200	550	2-Y16	2-Y12	C	-	2-Y16	-	F	2L-Y8 AT 150C/C	2L-Y8 AT 150C/C	2L-Y8 AT 150C/C
RB-22	200	550	2-Y16	2-Y12	A	-	2-Y16	-	B	2L-Y8 AT 175C/C	2L-Y8 AT 175C/C	2L-Y8 AT 175C/C
RB-23	200	550	2-Y16	-	-	-	2-Y16	-	F	2L-Y8 AT 200C/C	2L-Y8 AT 200C/C	2L-Y8 AT 200C/C
RB-24	200	550	2-Y16	2-Y12	B	-	2-Y16	-	C	2L-Y8 AT 125C/C	2L-Y8 AT 125C/C	2L-Y8 AT 125C/C
RB-25	200	550	2-Y12	-	-	-	2-Y12	-	B	2L-Y8 AT 200C/C	2L-Y8 AT 200C/C	2L-Y8 AT 200C/C
RB-26	200	550	2-Y20	-	A	-	2-Y20	2-Y12	B	2L-Y8 AT 100C/C	2L-Y8 AT 150C/C	2L-Y8 AT 100C/C
RB-27	200	550	2-Y20	-	B	2-Y12	2-Y20	2-Y16	C	2L-Y8 AT 100C/C	2L-Y8 AT 150C/C	2L-Y8 AT 100C/C
RB-28	200	550	2-Y20	-	C	2-Y16	2-Y20	-	F	2L-Y8 AT 100C/C	2L-Y8 AT 125C/C	2L-Y8 AT 100C/C
RB-29	200	550	2-Y20	-	8	2-Y20	2-Y20	2-Y20	7	2L-Y10 AT 100C/C	2L-Y10 AT 150C/C	2L-Y10 AT 100C/C
RB-30	200	550	2-Y20+2-Y16	-	7	2-Y20	2-Y20	2-Y20	5	2L-Y10 AT 100C/C	2L-Y10 AT 100C/C	2L-Y10 AT 100C/C

TABLE-1: TYPICAL FLOOR BEAM RC SCHEDULE

BEAM ID	SIZE (mm)		BOTTOM		LHS GRID	TOP			RHS GRID	STIRRUPS		
	WIDTH	DEPTH	STRAIGHT	CURTAIL		LHS EXTRA	STRAIGHT	RHS EXTRA		LHS	MIDDLE	RHS
RB-31	200	550	2-Y12	-	-	-	2-Y12	-	7	2L-Y8 AT 200C/C	2L-Y8 AT 200C/C	2L-Y8 AT 200C/C
RB-32	200	550	2-Y16	2-Y12	7	-	2-Y16	-	4	2L-Y8 AT 150C/C	2L-Y8 AT 150C/C	2L-Y8 AT 150C/C
RB-33	200	550	2-Y12	-	-	-	2-Y12	-	-	2L-Y8 AT 200C/C	2L-Y8 AT 200C/C	2L-Y8 AT 200C/C
RB-34	200	550	2-Y16	-	8	-	2-Y16	-	-	2L-Y8 AT 125C/C	2L-Y8 AT 125C/C	2L-Y8 AT 125C/C
RB-35	300	550	3-Y20	2-Y16	8	3-Y20	3-Y20	3-Y20	6	3L-Y10 AT 100C/C	3L-Y10 AT 125C/C	3L-Y10 AT 100C/C
RB-36	200	550	2-Y20	-	6	2-Y20	2-Y20	2-Y16	3	2L-Y10 AT 100C/C	2L-Y10 AT 125C/C	2L-Y10 AT 100C/C
RB-37	200	550	2-Y16	-	8	-	2-Y16	-	-	2L-Y8 AT 200C/C	2L-Y8 AT 200C/C	2L-Y8 AT 200C/C
RB-38	200	550	2-Y12	-	-	-	2-Y12	-	-	2L-Y8 AT 200C/C	2L-Y8 AT 200C/C	2L-Y8 AT 200C/C
RB-39	200	550	2-Y16	-	-	-	2-Y16	-	6	2L-Y8 AT 150C/C	2L-Y8 AT 150C/C	2L-Y8 AT 150C/C
RB-40	300	550	3-Y20	2-Y12	8	2-Y20	3-Y20	2-Y16	6	2L-Y10 AT 100C/C	2L-Y10 AT 125C/C	2L-Y10 AT 100C/C
RB-41	200	550	2-Y20	-	6	2-Y16	2-Y20	2-Y12	4	2L-Y10 AT 100C/C	2L-Y10 AT 125C/C	2L-Y10 AT 100C/C
RB-42	200	550	2-Y20	-	4	2-Y12	2-Y20	2-Y12	2	2L-Y10 AT 100C/C	2L-Y10 AT 125C/C	2L-Y10 AT 100C/C
RB-43	200	550	2-Y16	-	4	-	2-Y16	-	-	2L-Y8 AT 200C/C	2L-Y8 AT 200C/C	2L-Y8 AT 200C/C
RB-44	200	550	2-Y16	-	5	-	2-Y16	-	4	2L-Y8 AT 200C/C	2L-Y8 AT 200C/C	2L-Y8 AT 200C/C
RB-45	200	550	2-Y16	-	6	-	2-Y16	-	5	2L-Y8 AT 100C/C	2L-Y8 AT 100C/C	2L-Y8 AT 100C/C
RB-46	200	550	2-Y16	2-Y12	8	-	2-Y16	-	-	2L-Y8 AT 125C/C	2L-Y8 AT 125C/C	2L-Y8 AT 125C/C
RB-47	200	550	2-Y20	-	-	-	2-Y20	2-Y20	7	2L-Y10 AT 100C/C	2L-Y10 AT 100C/C	2L-Y10 AT 100C/C
RB-48	200	550	2-Y16	-	-	-	2-Y16	-	-	2L-Y8 AT 200C/C	2L-Y8 AT 200C/C	2L-Y8 AT 200C/C
RB-49	200	550	2-Y20	2-Y16	8	2-Y20	2-Y20	2-Y20	6	2L-Y10 AT 100C/C	2L-Y10 AT 150C/C	2L-Y10 AT 100C/C
RB-50	200	550	2-Y20	-	6	2-Y20	2-Y20	-	5	2L-Y8 AT 100C/C	2L-Y8 AT 100C/C	2L-Y8 AT 100C/C
RB-51	200	550	2-Y16	-	-	-	2-Y16	-	-	2L-Y8 AT 100C/C	2L-Y10 AT 200C/C	2L-Y8 AT 100C/C

TABLE-2: TYPICAL FLOOR SLAB REINFORCEMENT DETAILS

SL NO	DESCRIPTION	SHORTER REINF.	LONGER REINF.	THICKNESS OF SLAB	REMARKS
1.	S1 (Two-Way Slab)	Y8 @ 0.15C/C	Y8 @ 0.20C/C	0.150	-
2.	S2 (Two-Way Slab)	Y8 @ 0.20C/C	Y8 @ 0.20C/C	0.150	-
3.	S3 (Double Mat)	Y8 @ 0.20C/C	Y8 @ 0.20C/C	0.150	-
4.	S4 (Double Mat)	Y12 @ 0.125C/C	Y8 @ 0.20C/C	0.150	-
5.	S5 (Double Mat)	Y8 @ 0.100C/C	Y8 @ 0.150C/C	0.150	SUNKEN - 400mm
6.	TS (Double Mat)	Y8 @ 0.20C/C	Y8 @ 0.20C/C	0.150	SUNKEN - 400mm

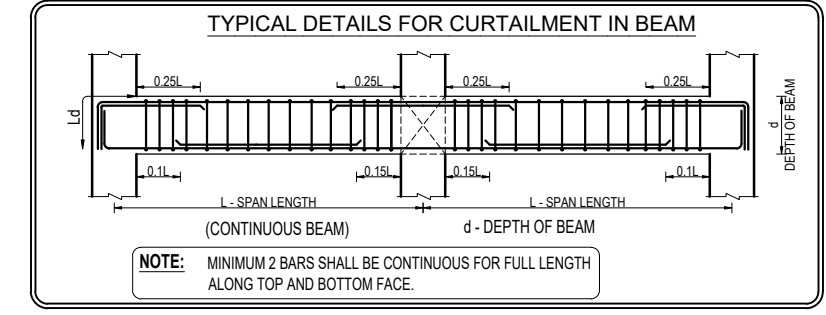
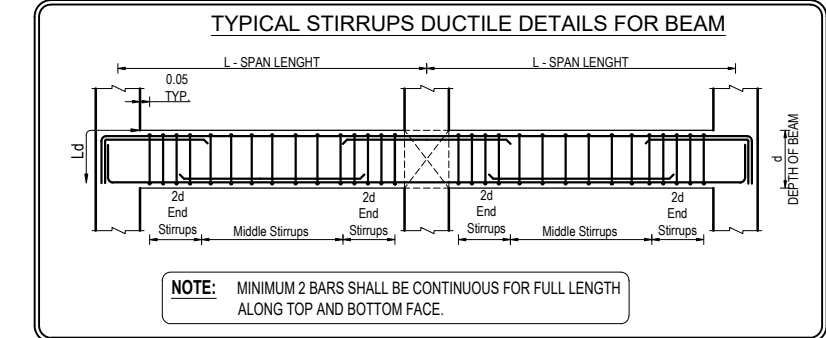


#) GRADE OF CONCRETE SHALL BE M30 CONFORMING TO IS 456 : 2000  
#) 'Y' DENOTES HIGH STRENGTH DEFORMED BARS OF GRADE Fe650D CONFORMING TO IS 1786 : 2008

- GENERAL NOTES :-
- ALL DIMENSIONS ARE IN m AND LEVELS IN MILLIMETER (U.N.O.)
  - THIS DRAWING IS TO BE READ IN CONJUNCTION WITH THE RELEVANT ARCHITECTURAL DRAWINGS, SERVICE CONSULTANTS DRGS. AND CIVIL CONTRACT DOCUMENT.
  - DO NOT SCALE THE DRAWING.
  - CONTRACTOR SHALL CHECK ALL DIMENSIONS AND LEVELS BEFORE EXECUTION OF WORK.
  - ALL THE R.C.C./STRUCTURAL WORK SHALL BE EXECUTED STRICTLY UNDER COMPETENT TECHNICAL SUPERVISION.
  - CLEAR COVER TO MAIN REIN.
    - a) BEAM = 30 mm
    - b) SLAB = 25 mm
  - LAP LENGTH (Ld) OF REINFORCING BAR SHALL BE 46d

#) TYPICAL FLOOR BEAM, SLAB LAYOUT REFER DWG NO: TAAM-292/ INDIAN BANK /RESD/ SYEC-STR/2024-302-004 SHEET 1 OF 2

#) STANDARD DETAILS REFER DWG NO:TAAM-292/ INDIAN BANK /RESD/ SYEC-STR/2024-STD-001



IT IS CERTIFIED THAT THIS DOCUMENT HAS BEEN DESIGNED AND CHECKED IN ACCORDANCE WITH DDC QUALITY ASSURANCE PLAN

PROJECT TITLE: PROPOSED RESIDENTIAL DEVELOPMENT FOR INDIAN BANK MUSIRI SUBRAMANIAM SALAI, CHENNAI

DRAWING TITLE: TYPICAL FLOOR SLAB & BEAM RC SCHEDULE DETAILS

PREPARED	FULL NAME	SIGNATURE
DRAWN BY	SARATHKUMAR	
DESIGNED BY	PRABHAKARAN	
APPROVED BY/ CHECKED BY	BALAGANESH	

SCALE : 1:100    DATE OF ISSUE : 10-06-2025    STAGE : GFC    SHEET NO :02 OF 02

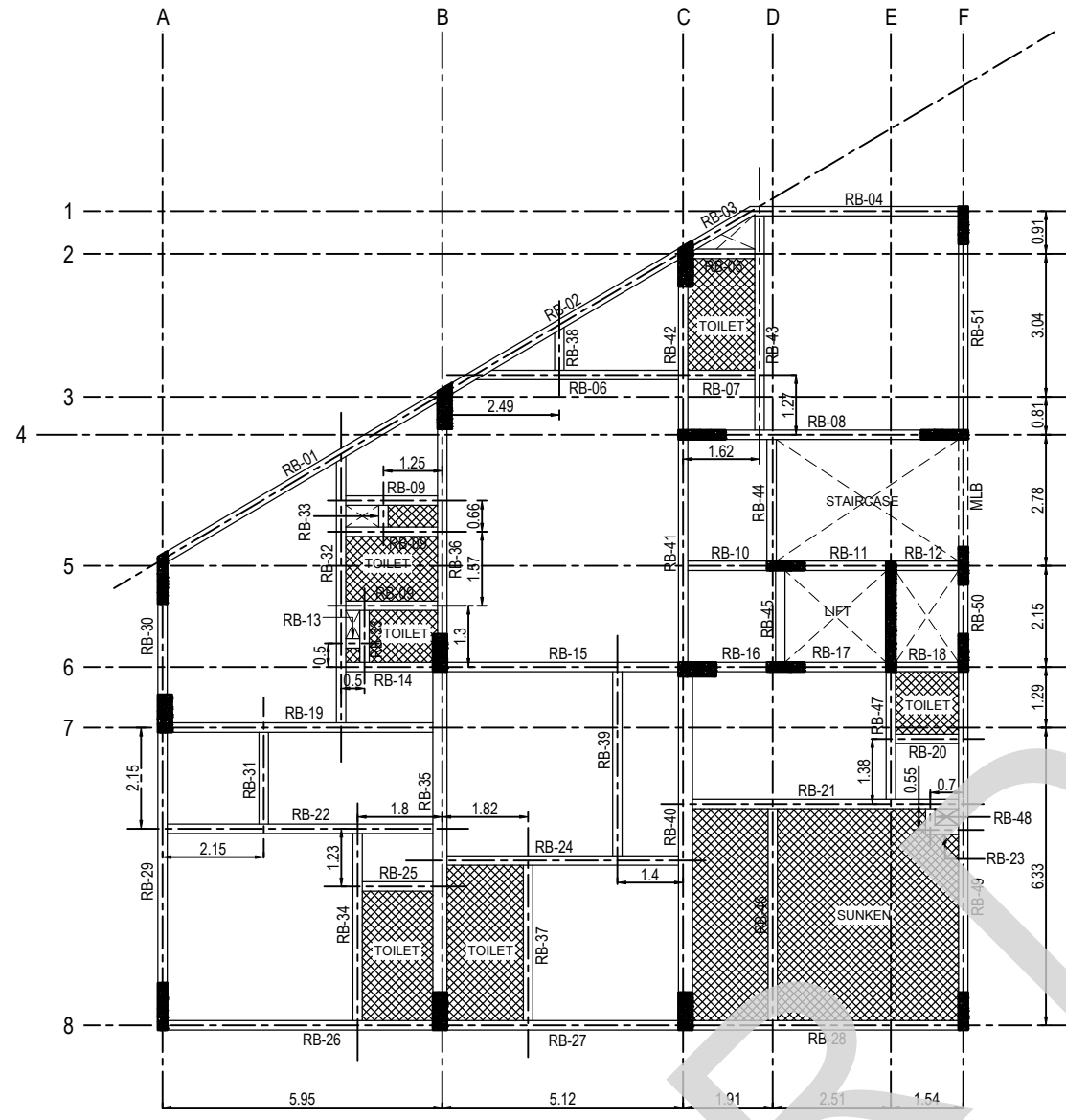
DRG. NO. TAAM-292/ INDIAN BANK /RESD/ SYEC-STR/2024-302-004    REV. : 02

REV	PARTICULARS	DRN.	DES.	CHE.	DATE
02	TYPICAL SLEEVE DETAILS ADDED	SK	PK	MBG	10-06-2025
01	REVISED AS PER LATEST ARCH DWG	SK	PK	MBG	06-04-2025
00	GOOD FOR CONSTRUCTION	SK	PK	MBG	06-04-2025

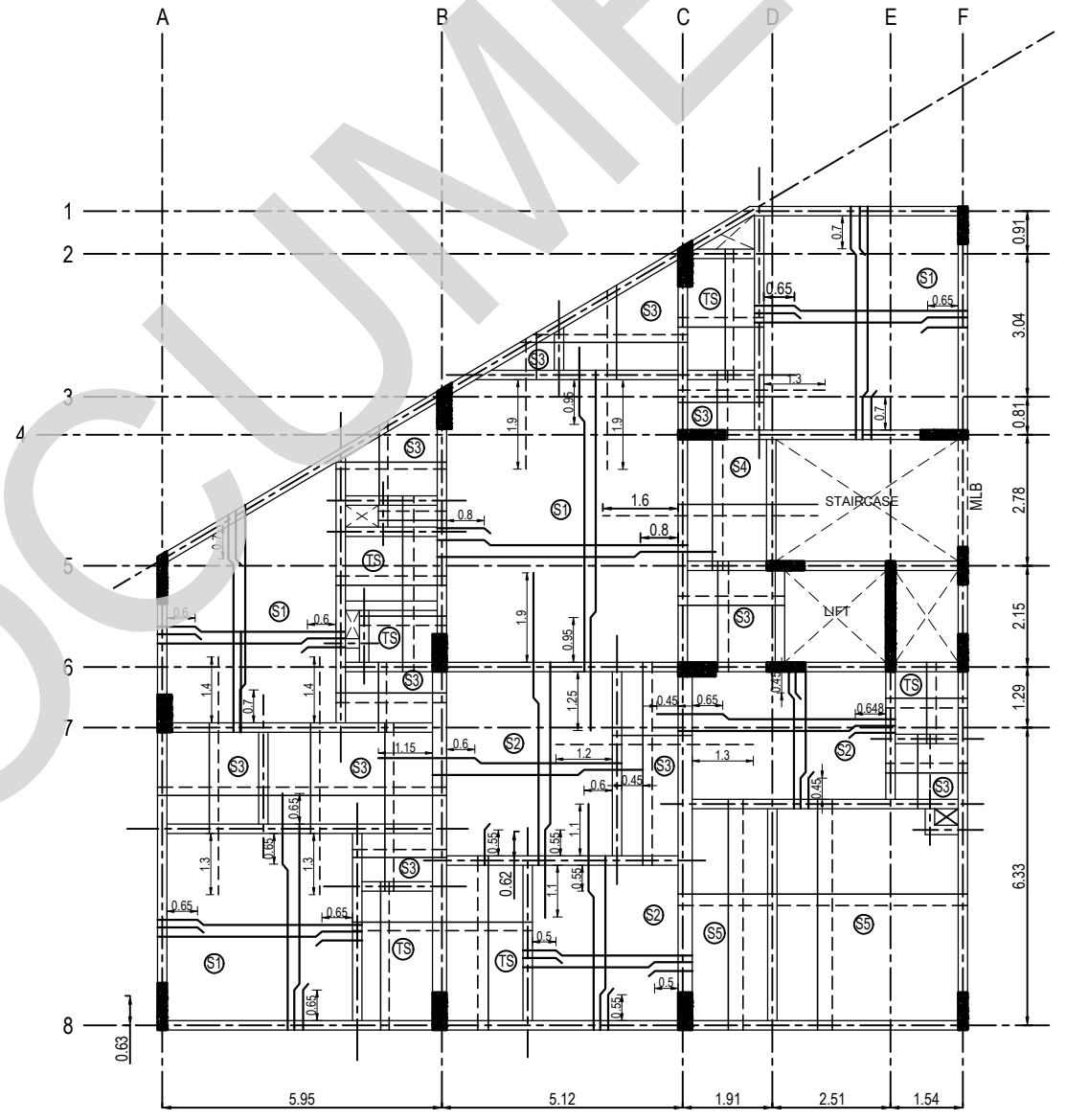
CLIENT: PROPOSED RESIDENTIAL DEVELOPMENT FOR INDIAN BANK MUSIRI SUBRAMANIAM SALAI, CHENNAI

DETAIL DESIGN CONSULTANT: TAAMAESEK ENGINEERING CONSORTIUM  
NEW NO. 5, OLD NO.2A, BISHOP WALLERS AVENUE WEST, OFF TTK ROAD, MYLAPORE, CHENNAI - 600 004.  
PH: 044-24671157/1139. FAX: 044-24672237. INFO@TAAMAESEK.COM WWW.TAAMAESEK.COM

STRUCTURAL CONSULTANT:- SHARVAYOKAM ENGINEERING CONSULTANTS  
3/85, DR.RADHAKRISHNAN STREET, PERIYAR SALAI, PALAVAKKAM, CHENNAI - 600 041. PH: +91-8840316478. EMAIL: sharvayokamengg@gmail.com



TYPICAL FLOOR BEAM LAYOUT



TYPICAL FLOOR SLAB LAYOUT

# TYPICAL FLOOR BEAM & SLAB RC SCHEDULE REFER DWG NO: TAAM-292/INDIAN BANK /RESD/ SYEC-STR/2024-302-004 SHEET 20F2  
 # STANDARD DETAILS REFER DWG NO:TAAM-292/INDIAN BANK /RESD/ SYEC-STR/2024-STD-001

- GENERAL NOTES :-**
- ALL DIMENSIONS ARE IN m AND LEVELS IN MILLIMETER (U.N.O.)
  - THIS DRAWING IS TO BE READ IN CONJUNCTION WITH THE RELEVANT ARCHITECTURAL DRAWINGS, SERVICE CONSULTANTS DRGS. AND CIVIL CONTRACT DOCUMENT.
  - DO NOT SCALE THE DRAWING.
  - CONTRACTOR SHALL CHECK ALL DIMENSIONS AND LEVELS BEFORE EXECUTION OF WORK.
  - ALL THE R.C.C./STRUCTURAL WORK SHALL BE EXECUTED STRICTLY UNDER COMPETENT TECHNICAL SUPERVISION.
  - CLEAR COVER TO MAIN REIN.
    - a) BEAM = 30 mm
    - b) SLAB = 25 mm
  - LAP LENGTH (Ld) OF REINFORCING BAR SHALL BE 46d

# GRADE OF CONCRETE SHALL BE M30 CONFORMING TO IS 456 : 2000  
 # "Y" DENOTES HIGH STRENGTH DEFORMED BARS OF GRADE Fe550D CONFORMING TO IS 1786 : 2008

IT IS CERTIFIED THAT THIS DOCUMENT HAS BEEN DESIGNED AND CHECKED IN ACCORDANCE WITH DDC QUALITY ASSURANCE PLAN

PROJECT TITLE  
**PROPOSED RESIDENTIAL DEVELOPMENT FOR INDIAN BANK MUSIRI SUBRAMANIAM SALAI, CHENNAI**

REV	PARTICULARS	DRN.	DES.	CHE.	DATE
02	TYPICAL SLEEVE DETAILS ADDED	SK	PK	MBG	10-06-2025
01	REVISED AS PER LATEST ARCH DWG	SK	PK	MBG	06-04-2025
00	GOOD FOR CONSTRUCTION	SK	PK	MBG	30-06-2024

CLIENT  
 PROPOSED RESIDENTIAL DEVELOPMENT FOR INDIAN BANK MUSIRI SUBRAMANIAM SALAI, CHENNAI

DETAIL DESIGN CONSULTANT  
**TAAMAESEK ENGINEERING CONSORTIUM**  
 NEW NO. 5, OLD NO.2A, BISHOP WALLERS AVENUE WEST, OFF TTK ROAD, MYLAPORE, CHENNAI - 600 004.  
 PH: 044-24671157/1139. FAX: 044-24672337. INFO@TAAMAESEK.COM WWW.TAAMAESEK.COM

STRUCTURAL CONSULTANT:-  
**SHARVAYOKAM ENGINEERING CONSULTANTS**  
 3/85, DR.RADHAKRISHNAN STREET PERIYAR SALAI, PALAVAKKAM CHENNAI - 600 041. PH: +91-8840316478. EMAIL: sharvayokamengg@gmail.com

PREPARED	FULL NAME	SIGNATURE
DRAWN BY	SARATHKUMAR	
DESIGNED BY	PRABHAKARAN	
APPROVED BY/ CHECKED BY	BALAGANESH	

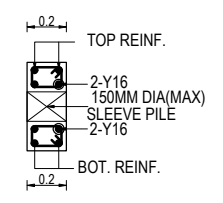
DRAWING TITLE			
<b>TYPICAL FLOOR SLAB &amp; BEAM LAYOUT</b>			
SCALE : 1:100	DATE OF ISSUE : 10-06-2025	STAGE : GFC	SHEET NO :01 OF 02
DRG.NO. TAAM-292/INDIAN BANK /RESD/ SYEC-STR/2024-302-004			REV : 02

TABLE-1: TERRACE FLOOR BEAM RC SCHEDULE

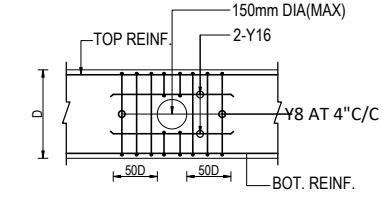
BEAM ID	SIZE (mm)		BOTTOM		LHS GRID	TOP			RHS GRID	STIRRUPS		
	WIDTH	DEPTH	STRAIGHT	CURTAIL		LHS EXTRA	STRAIGHT	RHS EXTRA		LHS	MIDDLE	RHS
TB-01	200	550	2-Y16	-	A	-	2-Y16	2-Y12	B	2L-Y8 AT 100C/C	2L-Y8 AT 200C/C	2L-Y8 AT 100C/C
TB-02	200	550	2-Y16	-	B	2-Y12	2-Y16	-	C	2L-Y8 AT 100C/C	2L-Y8 AT 200C/C	2L-Y8 AT 100C/C
TB-03	200	550	2-Y16	-	C	-	2-Y16	-	D	2L-Y8 AT 100C/C	2L-Y8 AT 100C/C	2L-Y8 AT 100C/C
TB-04	200	550	2-Y16	-	D	-	2-Y16	-	F	2L-Y8 AT 200C/C	2L-Y8 AT 200C/C	2L-Y8 AT 100C/C
TB-05	200	550	2-Y16	-	C	-	2-Y16+2-Y12	-	D	2L-Y10 AT 100C/C	2L-Y10 AT 100C/C	2L-Y10 AT 100C/C
TB-06	200	550	2-Y16	-	B	-	2-Y12	-	C	2L-Y8 AT 200C/C	2L-Y8 AT 200C/C	2L-Y8 AT 200C/C
TB-07	200	550	2-Y16	-	C	2-Y12	2-Y16	2-Y12	F	2L-Y8 AT 100C/C	2L-Y8 AT 200C/C	2L-Y8 AT 100C/C
TB-08	200	550	2-Y12	-	-	-	2-Y12	-	B	2L-Y8 AT 200C/C	2L-Y8 AT 200C/C	2L-Y8 AT 200C/C
TB-09	200	550	2-Y16	-	C	-	2-Y16	-	D	2L-Y8 AT 100C/C	2L-Y8 AT 100C/C	2L-Y8 AT 100C/C
TB-10	200	550	2-Y16	-	D	-	2-Y16	-	E	2L-Y8 AT 100C/C	2L-Y8 AT 100C/C	2L-Y8 AT 100C/C
TB-11	200	550	2-Y16	-	E	-	2-Y16	-	F	2L-Y8 AT 100C/C	2L-Y8 AT 100C/C	2L-Y8 AT 100C/C
TB-12	200	550	2-Y12	-	-	-	2-Y12	-	-	2L-Y8 AT 200C/C	2L-Y8 AT 200C/C	2L-Y8 AT 200C/C
TB-13	200	550	2-Y16	-	-	-	2-Y16	2-Y12	B	2L-Y8 AT 100C/C	2L-Y8 AT 100C/C	2L-Y8 AT 100C/C
TB-14	200	550	2-Y16	-	B	2-Y12	2-Y16	2-Y12	C	2L-Y8 AT 100C/C	2L-Y8 AT 150C/C	2L-Y8 AT 100C/C
TB-15	200	550	2-Y16	-	C	2-Y12	2-Y16	-	D	2L-Y8 AT 100C/C	2L-Y8 AT 100C/C	2L-Y8 AT 100C/C
TB-16	200	550	2-Y16	-	D	-	2-Y16	-	E	2L-Y8 AT 100C/C	2L-Y8 AT 100C/C	2L-Y8 AT 100C/C
TB-17	200	550	2-Y16	-	E	-	2-Y16	-	F	2L-Y8 AT 100C/C	2L-Y8 AT 100C/C	2L-Y8 AT 100C/C
TB-18	200	550	2-Y20	-	A	2-Y20	2-Y20	-	B	2L-Y10 AT 100C/C	2L-Y10 AT 150C/C	2L-Y10 AT 150C/C
TB-19	200	550	2-Y20	-	B	-	2-Y20	-	C	2L-Y8 AT 125C/C	2L-Y8 AT 125C/C	2L-Y8 AT 125C/C
TB-20	200	550	2-Y16	2-Y12	C	-	2-Y16	-	F	2L-Y8 AT 200C/C	2L-Y8 AT 200C/C	2L-Y8 AT 200C/C
TB-21	200	550	2-Y16	-	A	-	2-Y16	-	B	2L-Y8 AT 200C/C	2L-Y8 AT 200C/C	2L-Y8 AT 200C/C
TB-22	200	550	2-Y16	-	B	-	2-Y16	-	C	2L-Y8 AT 200C/C	2L-Y8 AT 200C/C	2L-Y8 AT 200C/C
TB-23	200	550	2-Y16	-	A	-	2-Y16	2-Y12	B	2L-Y8 AT 100C/C	2L-Y8 AT 150C/C	2L-Y8 AT 100C/C
TB-24	200	550	2-Y16	-	B	2-Y12	2-Y16	2-Y16	C	2L-Y8 AT 100C/C	2L-Y8 AT 200C/C	2L-Y8 AT 100C/C
TB-25	200	550	2-Y16	-	C	2-Y16	2-Y16	-	F	2L-Y8 AT 100C/C	2L-Y8 AT 125C/C	2L-Y8 AT 100C/C
TB-26	200	550	2-Y16	-	8	2-Y16	2-Y20	2-Y16	7	2L-Y10 AT 100C/C	2L-Y10 AT 150C/C	2L-Y10 AT 150C/C
TB-27	200	550	2-Y16	-	7	2-Y16	2-Y20	-	5	2L-Y8 AT 100C/C	2L-Y8 AT 100C/C	2L-Y8 AT 100C/C
TB-28	200	550	2-Y16	-	7	-	2-Y16	-	4	2L-Y8 AT 200C/C	2L-Y8 AT 200C/C	2L-Y8 AT 200C/C
TB-29	200	550	2-Y12	-	-	-	2-Y12	-	-	2L-Y8 AT 200C/C	2L-Y8 AT 200C/C	2L-Y8 AT 200C/C

TABLE-1: TERRACE FLOOR BEAM RC SCHEDULE

BEAM ID	SIZE (mm)		BOTTOM		LHS GRID	TOP			RHS GRID	STIRRUPS		
	WIDTH	DEPTH	STRAIGHT	CURTAIL		LHS EXTRA	STRAIGHT	RHS EXTRA		LHS	MIDDLE	RHS
TB-30	300	550	3-Y20	-	8	3-Y20	3-Y20	3-Y20	6	3L-Y10 AT 100C/C	3L-Y10 AT 150C/C	3L-Y10 AT 100C/C
TB-31	200	550	2-Y20	-	6	2-Y20	2-Y20	-	3	2L-Y8 AT 100C/C	2L-Y8 AT 125C/C	2L-Y8 AT 100C/C
TB-32	300	550	3-Y20	-	8	2-Y16	3-Y20	2-Y16	6	2L-Y10 AT 100C/C	2L-Y10 AT 125C/C	2L-Y10 AT 100C/C
TB-33	200	550	2-Y20	-	6	2-Y16	2-Y20	-	4	2L-Y8 AT 100C/C	2L-Y8 AT 150C/C	2L-Y8 AT 100C/C
TB-34	200	550	2-Y20	-	4	-	2-Y20	-	2	2L-Y8 AT 100C/C	2L-Y8 AT 200C/C	2L-Y8 AT 100C/C
TB-35	200	550	2-Y16	-	4	-	2-Y16	-	1	2L-Y8 AT 200C/C	2L-Y8 AT 200C/C	2L-Y8 AT 200C/C
TB-36	200	550	2-Y16	-	5	-	2-Y16	-	4	2L-Y8 AT 200C/C	2L-Y8 AT 200C/C	2L-Y8 AT 200C/C
TB-37	200	550	2-Y16	-	6	-	2-Y16	-	5	2L-Y8 AT 100C/C	2L-Y8 AT 100C/C	2L-Y8 AT 100C/C
TB-38	200	550	2-Y20	-	8	-	2-Y16	-	-	2L-Y8 AT 150C/C	2L-Y8 AT 150C/C	2L-Y8 AT 150C/C
TB-39	300	550	2-Y20	-	-	-	2-Y16	-	6	2L-Y8 AT 150C/C	2L-Y8 AT 150C/C	2L-Y8 AT 150C/C
TB-40	200	550	2-Y16	2-Y16	8	2-Y16	2-Y16	2-Y16	6	2L-Y8 AT 100C/C	2L-Y8 AT 125C/C	2L-Y8 AT 100C/C
TB-41	200	550	2-Y16	-	6	2-Y16	2-Y16	-	5	2L-Y8 AT 100C/C	2L-Y8 AT 100C/C	2L-Y8 AT 100C/C
TB-42	200	550	2-Y16	-	-	-	2-Y16	-	-	2L-Y8 AT 100C/C	2L-Y8 AT 200C/C	2L-Y8 AT 100C/C



TYP. SECTION OF SLEEVE ON BEAM



TYP. C/S OF SLEEVE DETAILS ON BEAM  
NOTE : SLEEVE LOCATION & SIZE REFER PHE DWG

TABLE-2: TERRACE FLOOR SLAB REINFORCEMENT DETAILS

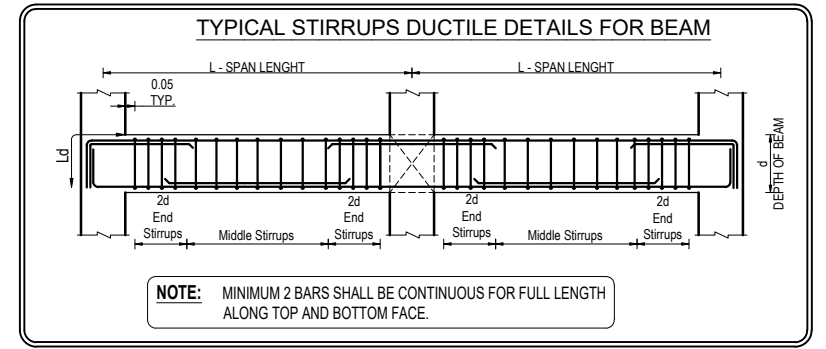
SL NO	DESCRIPTION	SHORTER REINF.	LONGER REINF.	THICKNESS OF SLAB	REMARKS
1.	S1 (Two-Way Slab)	Y8 @ 0.10C/C	Y8 @ 0.15C/C	0.150	-
2.	S2 (Two-Way Slab)	Y8 @ 0.15C/C	Y8 @ 0.20C/C	0.150	-
3.	S3 (Double Mat)	Y8 @ 0.20C/C	Y8 @ 0.20C/C	0.150	-
4.	S4 (Double Mat)	Y12 @ 0.125C/C	Y8 @ 0.20C/C	0.150	-

#) GRADE OF CONCRETE SHALL BE M30 CONFORMING TO IS 456 : 2000  
#) \*Y\* DENOTES HIGH STRENGTH DEFORMED BARS OF GRADE Fe550D CONFORMING TO IS 1786 : 2008

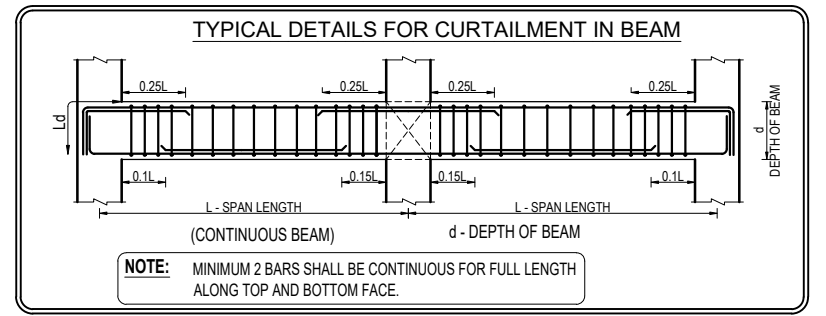
#) TERRACE FLOOR BEAM, SLAB LAYOUT REFER DWG NO: TAAM-292/ INDIAN BANK /RESD/ SYEC-STR/2024-302-005 SHEET 1 OF 2

#) STANDARD DETAILS REFER DWG NO:TAAM-292/ INDIAN BANK /RESD/ SYEC-STR/2024-STD-001

- GENERAL NOTES :-
- ALL DIMENSIONS ARE IN m AND LEVELS IN MILLIMETER (U.N.O.)
  - THIS DRAWING IS TO BE READ IN CONJUNCTION WITH THE RELEVANT ARCHITECTURAL DRAWINGS, SERVICE CONSULTANTS DRGS. AND CIVIL CONTRACT DOCUMENT.
  - DO NOT SCALE THE DRAWING.
  - CONTRACTOR SHALL CHECK ALL DIMENSIONS AND LEVELS BEFORE EXECUTION OF WORK.
  - ALL THE R.C.C./STRUCTURAL WORK SHALL BE EXECUTED STRICTLY UNDER COMPETENT TECHNICAL SUPERVISION.
  - CLEAR COVER TO MAIN REIN.
    - a) BEAM = 30 mm
    - b) SLAB = 25 mm
  - LAP LENGTH (Ld) OF REINFORCING BAR SHALL BE 46d



TYPICAL STIRRUPS DUCTILE DETAILS FOR BEAM  
NOTE: MINIMUM 2 BARS SHALL BE CONTINUOUS FOR FULL LENGTH ALONG TOP AND BOTTOM FACE.



TYPICAL DETAILS FOR CURTAILMENT IN BEAM  
NOTE: MINIMUM 2 BARS SHALL BE CONTINUOUS FOR FULL LENGTH ALONG TOP AND BOTTOM FACE.

IT IS CERTIFIED THAT THIS DOCUMENT HAS BEEN DESIGNED AND CHECKED IN ACCORDANCE WITH DDC QUALITY ASSURANCE PLAN

PREPARED	FULL NAME	SIGNATURE	PROJECT TITLE
DRAWN BY	SARATHKUMAR		PROPOSED RESIDENTIAL DEVELOPMENT FOR INDIAN BANK MUSIRI SUBRAMANIAM SALAI, CHENNAI
DESIGNED BY	PRABHAKARAN		DRAWING TITLE
APPROVED BY/ CHECKED BY	BALAGANESH		TERRACE FLOOR SLAB & BEAM RC SCHEDULE DETAILS

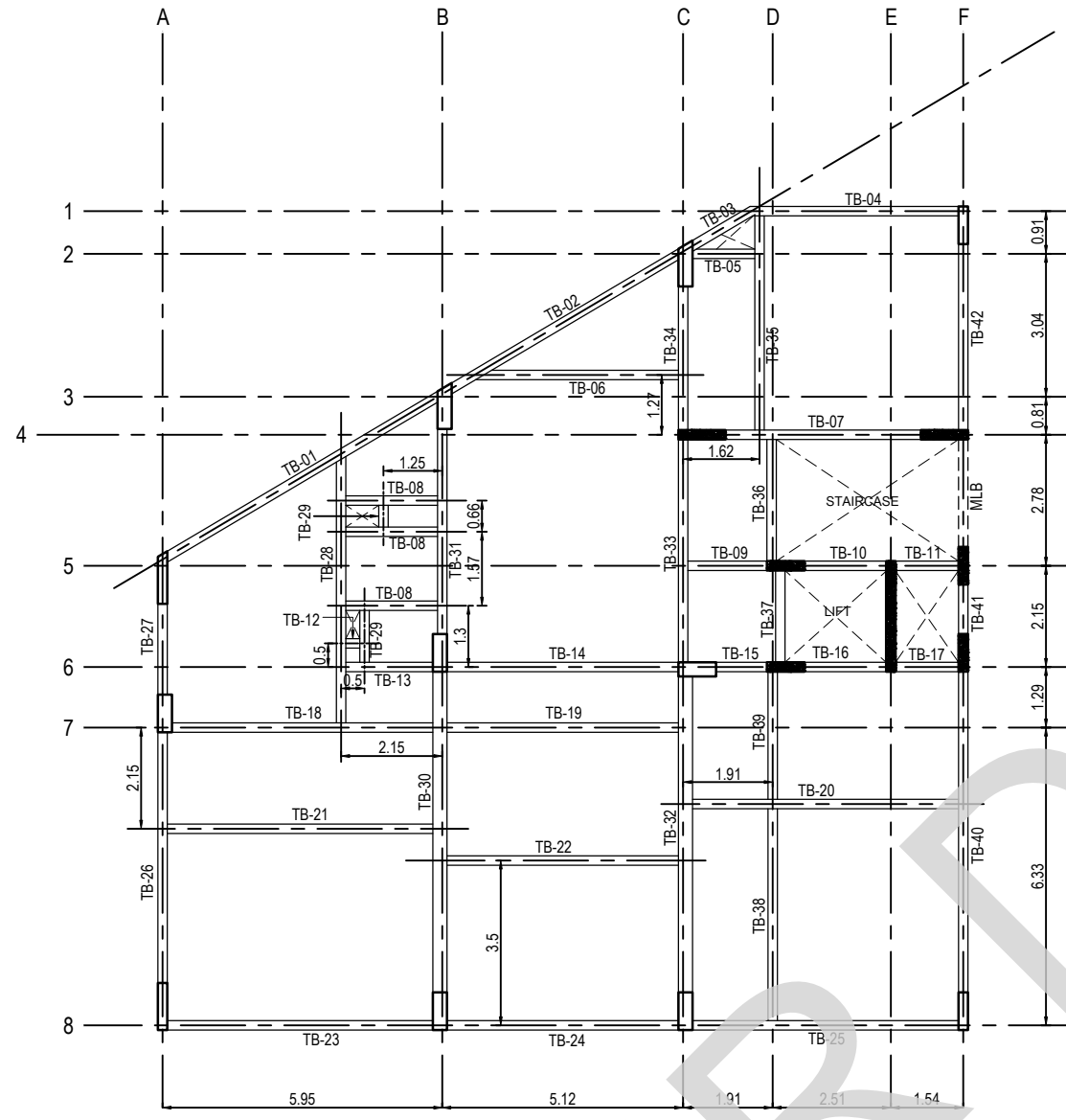
SCALE : 1:100    DATE OF ISSUE : 10-06-2025    STAGE : GFC    SHEET NO :02 OF 02  
DRG.NO. TAAM-292/ INDIAN BANK /RESD/ SYEC-STR/2024-302-005    REV. : 02

REV	PARTICULARS	DRN.	DES.	CHE.	DATE
02	TYPICAL SLEEVE DETAILS ADDED	SK	PK	MBG	10-06-2025
01	REVISED AS PER LATEST	SK	PK	MBG	06-04-2025
00	GOOD FOR CONSTRUCTION	SK	PK	MBG	30-06-2025

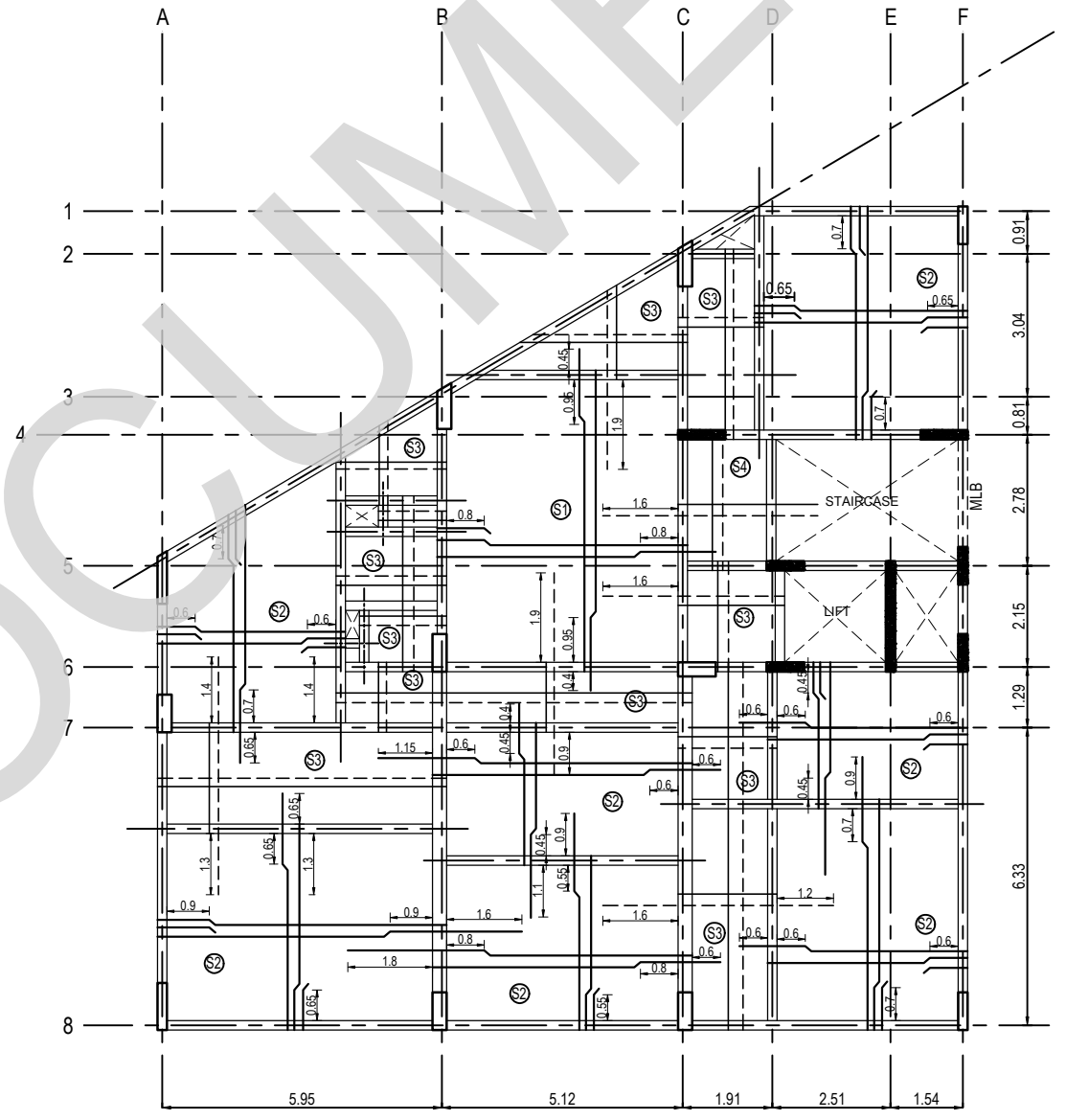
CLIENT  
PROPOSED RESIDENTIAL DEVELOPMENT FOR INDIAN BANK MUSIRI SUBRAMANIAM SALAI, CHENNAI

DETAIL DESIGN CONSULTANT  
TAAMAESEK ENGINEERING CONSORTIUM  
NEW NO. 5, OLD NO.22A, BISHOP WALLERS AVENUE WEST, OFF TTK ROAD, MYLAPORE, CHENNAI - 600 004.  
PH: 044-24671157/1139. FAX: 044-24672237. INFO@TAAMAESEK.COM WWW.TAAMAESEK.COM

STRUCTURAL CONSULTANT:-  
SHARVAYOKAM ENGINEERING CONSULTANTS  
3/85, DR.RADHAKRISHNAN STREET PERIYAR SALAI, PALAVAKKAM CHENNAI - 600 041. PH: +91-8840316479. EMAIL: sharvayokamengg@gmail.com



TERRACE FLOOR BEAM LAYOUT



TERRACE FLOOR SLAB LAYOUT

**LEGEND:**

	COLUMN TERMINATED AT THIS LEVEL
	COLUMN CONTINUOUS

# TERRACE FLOOR BEAM & SLAB RC SCHEDULE REFER DWG NO: TAAM-292/ INDIAN BANK /RESD/ SYEC-STR/2024-302-005 SHEET 20F2  
 # STANDARD DETAILS REFER DWG NO:TAAM-292/ INDIAN BANK /RESD/ SYEC-STR/2024-STD-001

- GENERAL NOTES :-**
- ALL DIMENSIONS ARE IN m AND LEVELS IN MILLIMETER (U.N.O.)
  - THIS DRAWING IS TO BE READ IN CONJUNCTION WITH THE RELEVANT ARCHITECTURAL DRAWINGS, SERVICE CONSULTANTS DRGS. AND CIVIL CONTRACT DOCUMENT.
  - DO NOT SCALE THE DRAWING.
  - CONTRACTOR SHALL CHECK ALL DIMENSIONS AND LEVELS BEFORE EXECUTION OF WORK.
  - ALL THE R.C.C./STRUCTURAL WORK SHALL BE EXECUTED STRICTLY UNDER COMPETENT TECHNICAL SUPERVISION.
  - CLEAR COVER TO MAIN REIN.
    - a) BEAM = 30 mm
    - b) SLAB = 25 mm
  - LAP LENGTH (L<sub>d</sub>) OF REINFORCING BAR SHALL BE 46d

# GRADE OF CONCRETE SHALL BE M30 CONFORMING TO IS 456 : 2000  
 # "Y" DENOTES HIGH STRENGTH DEFORMED BARS OF GRADE Fe550D CONFORMING TO IS 1786 : 2008

REV	PARTICULARS	DRN.	DES.	CHE.	DATE
02	TYPICAL SLEEVE DETAILS ADDED	SK	PK	MBG	10-06-2025
01	REVISED AS PER LATEST ARCH DWG	SK	PK	MBG	06-04-2025
00	GOOD FOR CONSTRUCTION	SK	PK	MBG	30-06-2024

CLIENT  
 PROPOSED RESIDENTIAL DEVELOPMENT FOR INDIAN BANK MUSIRI SUBRAMANIAM SALAI, CHENNAI

DETAIL DESIGN CONSULTANT  
**TAAMAESEK ENGINEERING CONSORTIUM**  
 NEW NO. 5, OLD NO.22A, BISHOP WALLERS AVENUE WEST, OFF TTK ROAD, MYLAPORE, CHENNAI - 600 004.  
 PH: 044-24671157/1139. FAX: 044-24672337.  
 INFO@TAAMAESEK.COM WWW.TAAMAESEK.COM

STRUCTURAL CONSULTANT:-  
**SHARVAYOKAM ENGINEERING CONSULTANTS**  
 3/85, DR.RADHAKRISHNAN STREET PERIYAR SALAI, PALAVANKKAM CHENNAI - 600 041.  
 PH: +91-8840316478. EMAIL: sharvayokamengg@gmail.com

IT IS CERTIFIED THAT THIS DOCUMENT HAS BEEN DESIGNED AND CHECKED IN ACCORDANCE WITH DDC QUALITY ASSURANCE PLAN

PREPARED	FULL NAME	SIGNATURE
DRAWN BY	SARATHKUMAR	
DESIGNED BY	PRABHAKARAN	
APPROVED BY/ CHECKED BY	BALAGANESH	

PROJECT TITLE  
**PROPOSED RESIDENTIAL DEVELOPMENT FOR INDIAN BANK MUSIRI SUBRAMANIAM SALAI, CHENNAI**

DRAWING TITLE  
**TERRACE FLOOR SLAB & BEAM LAYOUT**

SCALE: 1:100	DATE OF ISSUE: 10-06-2025	STAGE: GFC	SHEET NO: 01 OF 02
DRG. NO. TAAM-292/ INDIAN BANK /RESD/ SYEC-STR/2024-302-005			REV: 02

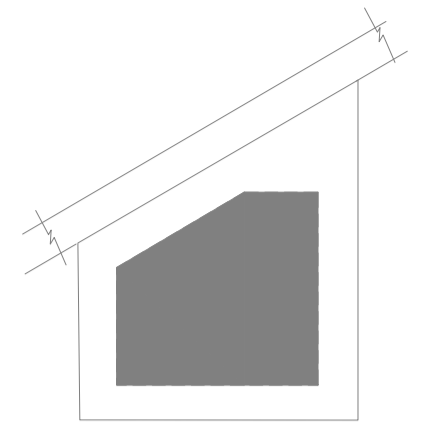
5.12

1.91

2.51

1.54

KEY PLAN:



LEGEND

	EWC	EUROPEAN WATER CLOSET WALL HUNG
	EWC	EUROPEAN WATER CLOSET FLOOR MOUNTED
	OW	WASH BASIN
	UR	URINAL
	FT	FLOOR TRAP
	RWP	RAIN WATER PIPE 160Ø PVC (6 kg)
	SP	SOIL PIPE 160Ø PVC (6 kg)
	WP	WASTE PIPE 100Ø PVC (6 kg)
	WP	WASTE PIPE 40Ø & 50Ø PVC (10 kg)
	HF	HEALTH FAUCET
	BV	BALL VALVE
	CWS	COLD WATER SUPPLY C <sub>pvc</sub> PIPE
	FWS	FLUSH WATER SUPPLY C <sub>pvc</sub> PIPE
	SL	75mm PVC SLEEVE FOR AC
	PL	PLUMBING SLEEVE
	PL	PLUMBING SLEEVE
	WC	WALL CUTOUT
	GT	GULLY TRAP
	IC	INSPECTION CHAMBER

NOTE:

1. ALL CWS C<sub>pvc</sub> PIPE MAIN LINES ARE 20mm Dia
2. ALL CWS C<sub>pvc</sub> PIPE TAPPING POINTS ARE 20mm Dia
3. ALL FWS C<sub>pvc</sub> PIPE MAIN LINES ARE 20mm Dia
4. ALL FWS C<sub>pvc</sub> PIPE TAPPING POINTS ARE 20mm Dia
5. 75mm X75mm CUT OUT FOR WASH BASIN DRAIN PIPE
6. 160mm Dia SLEEVE FOR WASTE & SOIL PIPE
7. KITCHEN WASTE LINE 50mm Dia pipe
8. RAIN WATER DOWNCOMER PIPE SHALL BE 160mm DIA PIPE
9. WASH BASIN WASTE LINE 40mm Dia pipe

NOTE:

ALL DIMENSIONS ARE IN MILLIMETERS.  
 ALL DIMENSIONS TO BE CHKD. AT SITE.  
 DO NOT SCALE THE DRAWING  
 IN THE EVENT OF ANY DISCREPANCIES OR DIFFERENCES BETWEEN ARCHITECT DRAWINGS, STRUCTURAL DRAWING AND SITE CONDITIONS, IMMEDIATE REFERENCE IS TO BE MADE TO THE ARCHITECT PRIOR TO THE EXECUTION OF WORK AT THE SITE.

DATE	NO	REVISION	CHECKED

ARCHITECTS & EP CONSTRUCTION:



Taamaesek Engineering Consortium  
 New no. 5, Old no.2a, Bishop Wallers  
 Avenue west, Mylapore,  
 Chennai - 600 004. Ph:044-24671157/1139.  
 Fax : 044-24672237.  
 url:www.taamaesek.com  
 e-mail: info@taamaesek.com

CLIENT:



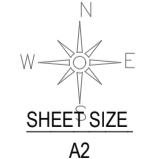
M/s. INDIAN BANK  
 254-260, INDIAN BANK CORPORATE OFFICE,  
 AVVAI SHANMUGAM SALAI, ROYAPETTAH, CHENNAI - 4.

PROJECT:

Tender ID: CO:EST:TNR:MBG:001:2023-24  
 PROPOSED CONSTRUCTION OF RESIDENTIAL BUILDING  
 (Stilt + 5 Floors) @MUSIRI SUBRAMANIAM SALAI, CHENNAI - 600 004.

DRAWING STAGE: GOOD FOR CONSTRUCTION

DRAWN BY	A.SHAJIDEEN
CHECKED BY	S.T.MURALI
SCALE	1 : 100
DATE	26.03.2025

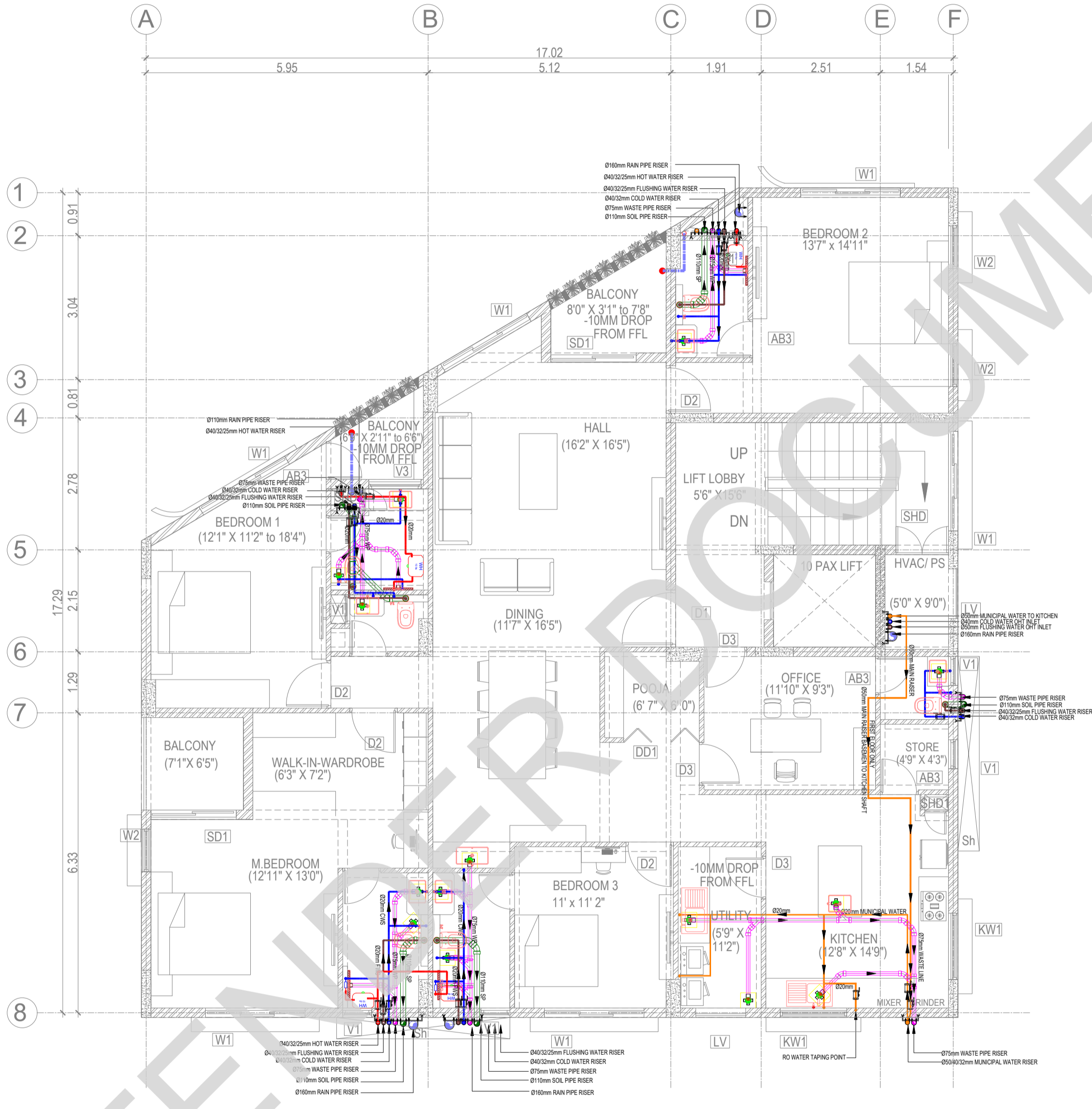
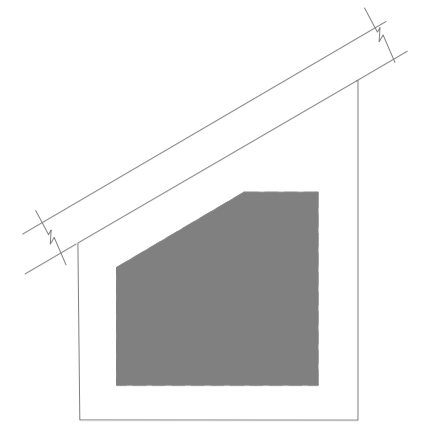


DRAWING TITLE:  
**BASEMENT PLUMBING -PUMP ROOM**

DRAWING NUMBER: TMA-292/RES/GFC/PHE/PHE-01

Project Code Number	Location of Project	Project Name	Type of Construction	Type of Drawing	Drawing number	Revision number
TMA/292	MYLAPORE	RESIDENTIAL	RESIDENTIAL	PHE	PHE-01	R1

BASEMENT PLUMBING -PUMP ROOM



LEGEND

	EWC	EUROPEAN WATER CLOSET
	EWC	EUROPEAN WATER CLOSET WALL HUNG
	EWC	EUROPEAN WATER CLOSET FLOOR MOUNTED
	WB	WASH BASIN
	UR	URINAL
	FT	FLOOR TRAP
	RWP	RAIN WATER PIPE 160Ø PVC (6 kg)
	SP	SOIL PIPE 160Ø PVC (6 kg)
	WP	WASTE PIPE 100Ø PVC (6 kg)
	WP	WASTE PIPE 40Ø & 50Ø PVC (10 kg)
	HF	HEALTH FAUCET
	BV	BALL VALVE
	CWS	COLD WATER SUPPLY CpvC PIPE
	FWS	FLUSH WATER SUPPLY CpvC PIPE
	SL	75mm PVC SLEEVE FOR AC
	PL	PLUMBING SLEEVE
	PL	PLUMBING SLEEVE
	WC	WALL CUTOUT
	GT	GULLY TRAP
	IC	INSPECTION CHAMBER

- NOTE:**
1. ALL CWS CpvC PIPE MAIN LINES ARE 20mm Dia
  2. ALL CWS CpvC PIPE TAPPING POINTS ARE 20mm Dia
  3. ALL FWS CpvC PIPE MAIN LINES ARE 20mm Dia
  4. ALL FWS CpvC PIPE TAPPING POINTS ARE 20mm Dia
  5. 75mm X 75mm CUT OUT FOR WASH BASIN DRAIN PIPE
  6. 160mm Dia SLEEVE FOR WASTE & SOIL PIPE
  7. KITCHEN WASTE LINE 50mm Dia pipe
  8. RAIN WATER DOWNCOMER PIPE SHALL BE 160mm DIA PIPE
  9. WASH BASIN WASTE LINE 40mm Dia pipe

**NOTE:**  
ALL DIMENSIONS ARE IN MILLIMETERS.  
ALL DIMENSIONS TO BE CHKD. AT SITE.  
DO NOT SCALE THE DRAWING  
IN THE EVENT OF ANY DISCREPANCIES OR DIFFERENCES BETWEEN ARCHITECT DRAWINGS, STRUCTURAL DRAWING AND SITE CONDITIONS, IMMEDIATE REFERENCE IS TO BE MADE TO THE ARCHITECT PRIOR TO THE EXECUTION OF WORK AT THE SITE.

DATE	NO	REVISION	CHECKED

ARCHITECTS & EP CONSTRUCTION:

**Taamaesek Engineering Consortium**  
New no. 5, Old no. 2a, Bishop Wallers  
Avenue west, Mylapore,  
Chennai - 600 004. Ph: 044-24671157/1139.  
Fax : 044-24672237.  
url: www.taamaesek.com  
e-mail: info@taamaesek.com

CLIENT:



M/s. INDIAN BANK  
254-260, INDIAN BANK CORPORATE OFFICE,  
AVVAI SHANMUGAM SALAI, ROYAPETTAH, CHENNAI - 4.

**PROJECT:**  
Tender ID: CO-EST:TNR:MBG:001:2023-24  
PROPOSED CONSTRUCTION OF RESIDENTIAL BUILDING  
(Stilt + 5 Floors) @MUSIRI SUBRAMANIAM SALAI, CHENNAI - 600 004.

**DRAWING STAGE:** GOOD FOR CONSTRUCTION

DRAWN BY	A.SHAJIDEEN
CHECKED BY	S.T.MURALI
SCALE	1 : 100
DATE	26.03.2025



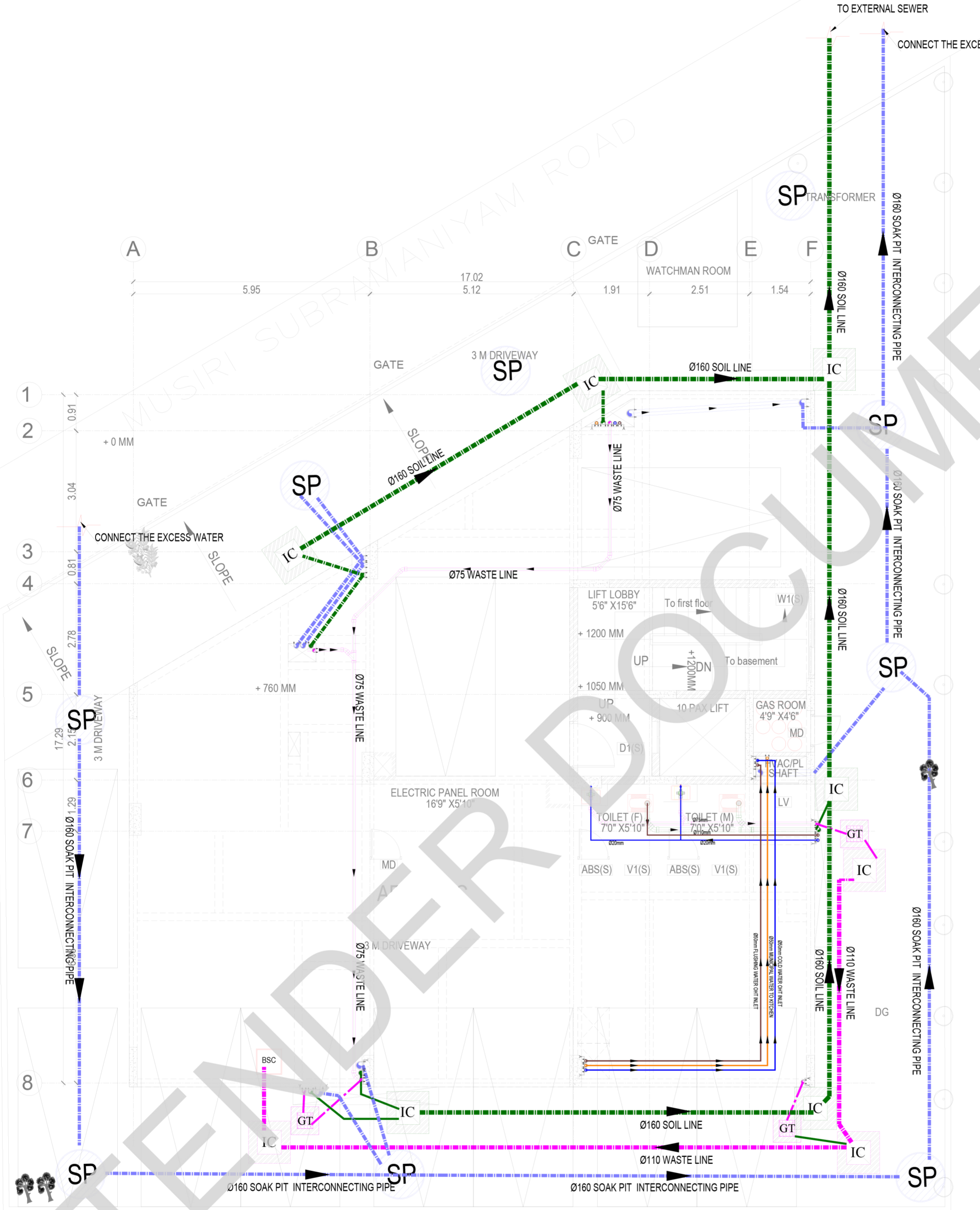
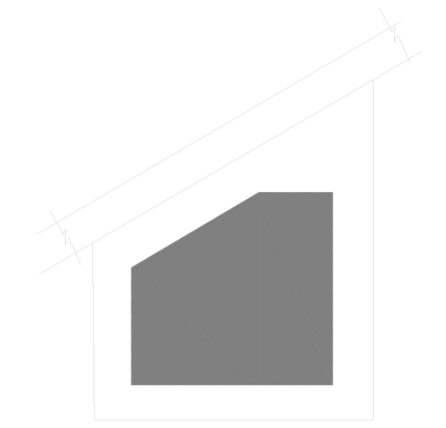
**DRAWING TITLE:**

**TYPICAL FLOOR PLAN 1-5**

**DRAWING NUMBER:** TMA-292/RES/GFC/PHE/PHE-03

Project Code Number	Location of Project	Project Name	Type of Construction	Type of Drawing	Drawing number	Revision number
TMA/292	MYLAPORE	RESIDENTIAL	RESIDENTIAL	PHE	PHE-03	R1

**KEY PLAN:**



**LEGEND**

	EWC	EUROPEAN WATER CLOSET WALL HUNG
	EWC	EUROPEAN WATER CLOSET FLOOR MOUNTED
	WB	WASH BASIN
	UR	URINAL
	FT	FLOOR TRAP
	RWP	RAIN WATER PIPE 160Ø PVC (6 kg)
	SP	SOIL PIPE 160Ø PVC (6 kg)
	WP	WASTE PIPE 100Ø PVC (6 kg)
	WP	WASTE PIPE 40Ø & 50Ø PVC (10 kg)
	HF	HEALTH FAUCET
	BV	BALL VALVE
	CWS	COLD WATER SUPPLY Cpv PIPE
	FWS	FLUSH WATER SUPPLY Cpv PIPE
	SL	75mm PVC SLEEVE FOR AC
	PL	PLUMBING SLEEVE
	WC	WALL CUTOUT
	GT	GULLY TRAP
	IC	INSPECTION CHAMBER

- NOTE:**
1. ALL CWS Cpv PIPE MAIN LINES ARE 20mm Dia
  2. ALL CWS Cpv PIPE TAPPING POINTS ARE 20mm Dia
  3. ALL FWS Cpv PIPE MAIN LINES ARE 20mm Dia
  4. ALL FWS Cpv PIPE TAPPING POINTS ARE 20mm Dia
  5. 7.5mm X 75mm CUT OUT FOR WASH BASIN DRAIN PIPE
  6. 160mm Dia SLEEVE FOR WASTE & SOIL PIPE
  7. KITCHEN WASTE LINE 50mm Dia pipe
  8. RAIN WATER DOWNCOMER PIPE SHALL BE 160mm DIA PIPE
  9. WASH BASIN WASTE LINE 40mm Dia pipe

**NOTE:**  
 ALL DIMENSIONS ARE IN MILLIMETERS.  
 ALL DIMENSIONS TO BE CHKD. AT SITE.  
 DO NOT SCALE THE DRAWING  
 IN THE EVENT OF ANY DISCREPANCIES OR DIFFERENCES BETWEEN ARCHITECT DRAWINGS, STRUCTURAL DRAWING AND SITE CONDITIONS, IMMEDIATE REFERENCE IS TO BE MADE TO THE ARCHITECT PRIOR TO THE EXECUTION OF WORK AT THE SITE.

DATE	NO	REVISION	CHECKED

**ARCHITECTS & EP CONSTRUCTION:**

Taamaesek Engineering Consortium  
 New no. 5, Old no. 2a, Bishop Wallers  
 Avenue west, Mylapore,  
 Chennai - 600 004. Ph: 044-24671157/1139.  
 Fax : 044-24672237.  
 url: www.taamaesek.com  
 e-mail: info@taamaesek.com

**CLIENT :**

M/s. INDIAN BANK  
 254-260, INDIAN BANK CORPORATE OFFICE,  
 AVVAI SHANMUGAM SALAI, ROYAPETTAH, CHENNAI - 4.

**PROJECT:**  
 Tender ID: CO:EST:TNR:MBG:001:2023-24  
 PROPOSED CONSTRUCTION OF RESIDENTIAL BUILDING  
 (Stilt + 5 Floors) @MUSIRI SUBRAMANIAM SALAI, CHENNAI – 600 004.

**DRAWING STAGE:** GOOD FOR CONSTRUCTION

DRAWN BY	A.SHAJIDEEN
CHECKED BY	S.T.MURALI
SCALE	1 : 100
DATE	26.03.2025

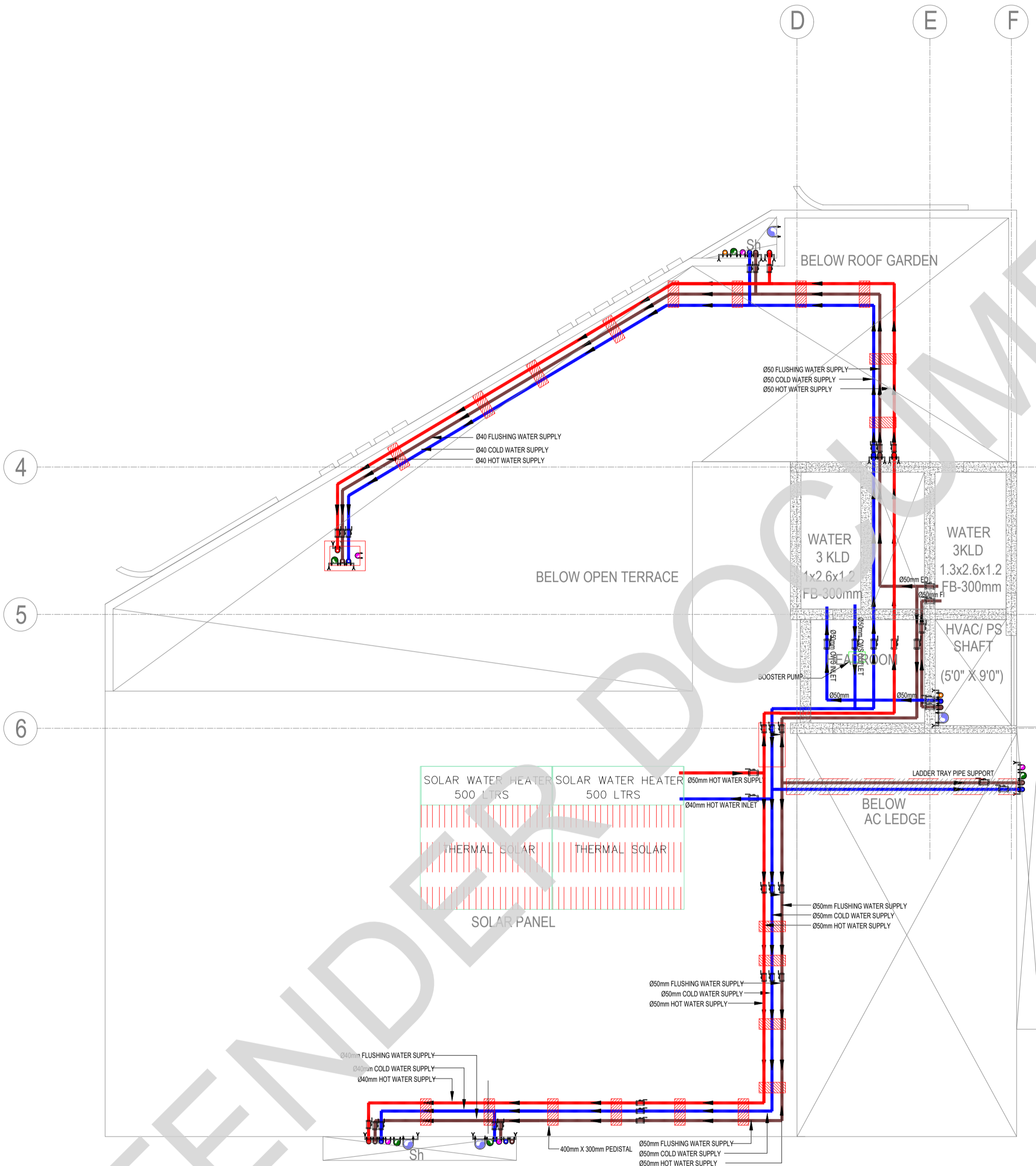
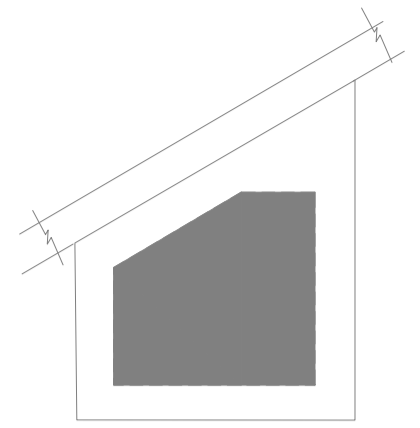
**DRAWING TITLE:**

**STLIT FLOOR PLAN-PLUMBING**

**DRAWING NUMBER:** TMA-292/RES/GFC/PHE/PHE-02

Project Code Number	Location of Project	Project Name	Type of Construction	Type of Drawing	Drawing number	Revision number
TMA/292	MYLAPORE	RESIDENTIAL	RESIDENTIAL	PHE	PHE-02	R1

**KEY PLAN:**



**LEGEND**

	EWC	EUROPEAN WATER CLOSET WALL HUNG
	EWC	EUROPEAN WATER CLOSET FLOOR MOUNTED
	WB	WASH BASIN
	UR	URINAL
	FT	FLOOR TRAP
	RWP	RAIN WATER PIPE 160Ø PVC (6 kg)
	SP	SOIL PIPE 160Ø PVC (6 kg)
	WP	WASTE PIPE 100Ø PVC (6 kg)
	WP	WASTE PIPE 40Ø & 50Ø PVC (10 kg)
	HF	HEALTH FAUCET
	BV	BALL VALVE
	CWS	COLD WATER SUPPLY CpvC PIPE
	FWS	FLUSH WATER SUPPLY CpvC PIPE
	SL	75mm PVC SLEEVE FOR AC
	PL	PLUMBING SLEEVE
	PL	PLUMBING SLEEVE
	WC	WALL CUTOUT
	GT	GULLY TRAP
	IC	INSPECTION CHAMBER

**NOTE:**

1. ALL CWS CpvC PIPE MAIN LINES ARE 20mm Dia
2. ALL CWS CpvC PIPE TAPPING POINTS ARE 20mm Dia
3. ALL FWS CpvC PIPE MAIN LINES ARE 20mm Dia
4. ALL FWS CpvC PIPE TAPPING POINTS ARE 20mm Dia
5. 75mm X 75mm CUT OUT FOR WASH BASIN DRAIN PIPE
6. 160mm Dia SLEEVE FOR WASTE & SOIL PIPE
7. KITCHEN WASTE LINE 50mm Dia pipe
8. RAIN WATER DOWNCOMER PIPE SHALL BE 160mm DIA PIPE
9. WASH BASIN WASTE LINE 40mm Dia pipe

**NOTE:**

ALL DIMENSIONS ARE IN MILLIMETERS.  
ALL DIMENSIONS TO BE CHKD. AT SITE.  
DO NOT SCALE THE DRAWING  
IN THE EVENT OF ANY DISCREPANCIES OR DIFFERENCES BETWEEN ARCHITECT DRAWINGS, STRUCTURAL DRAWING AND SITE CONDITIONS, IMMEDIATE REFERENCE IS TO BE MADE TO THE ARCHITECT PRIOR TO THE EXECUTION OF WORK AT THE SITE.

DATE	NO	REVISION	CHECKED

**ARCHITECTS & EP CONSTRUCTION:**



**Taamaesek Engineering Consortium**  
New no. 5, Old no.2a, Bishop Wallers  
Avenue west, Mylapore,  
Chennai - 600 004. Ph:044-24671157/1139.  
Fax : 044-24672237.  
url:www.taamaesek.com  
e-mail: info@taamaesek.com

**CLIENT :**



M/s. INDIAN BANK  
254-260, INDIAN BANK CORPORATE OFFICE,  
AVVAI SHANMUGAM SALAI, ROYAPETTAH, CHENNAI - 4.

**PROJECT:**

Tender ID: CO:EST:TDR:MBG:001:2023-24  
PROPOSED CONSTRUCTION OF RESIDENTIAL BUILDING  
(Stilt + 5 Floors) @MUSIRI SUBRAMANIAM SALAI, CHENNAI - 600 004.

**DRAWING STAGE:** GOOD FOR CONSTRUCTION

<b>DRAWN BY</b>	A.SHAJIDEEN
<b>CHECKED BY</b>	S.T.MURALI
<b>SCALE</b>	1 : 100
<b>DATE</b>	26.03.2025



**DRAWING TITLE:**

**ABOVE TERRACE PLAN PLUMBING**

**DRAWING NUMBER:** TMA-292/RES/GFC/PHE/PHE-05

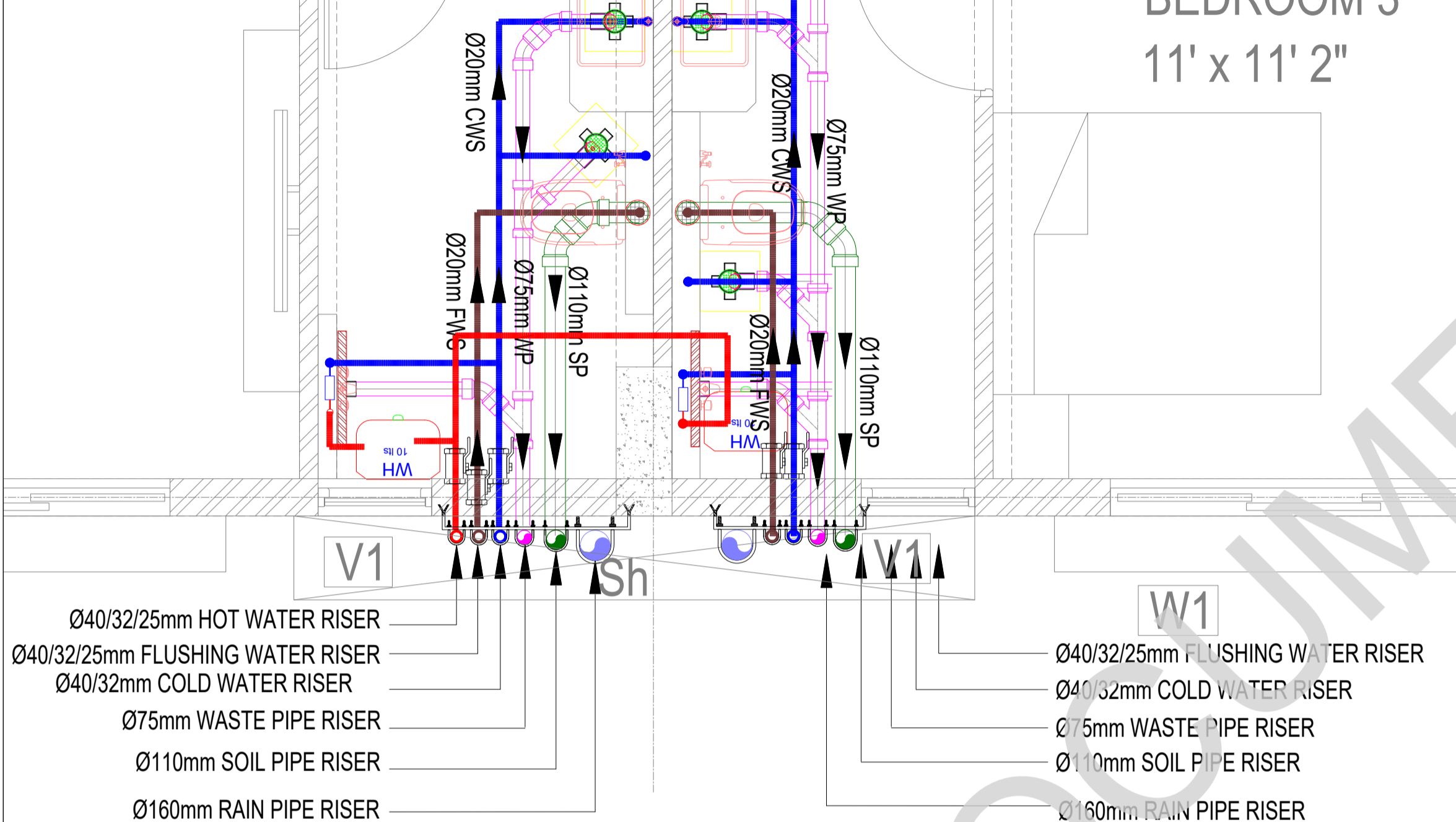
Project Code Number	Location of Project	Project Name	Type of Construction	Type of Drawing	Drawing number	Revision number
TMA/292	MYLAPORE	RESIDENTIAL	RESIDENTIAL	PHE	PHE-05	R1

ABOVE TERRACE PLAN PLUMBING

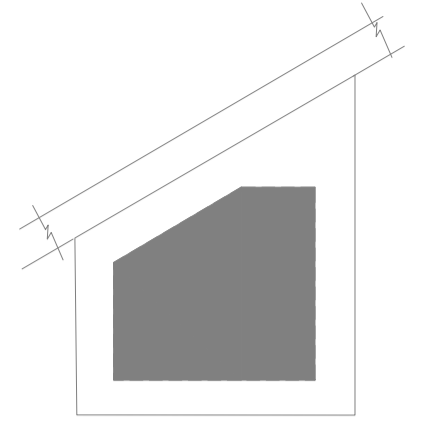
(6'3" X 7'2")

BEDROOM  
(11' X 13'0")

BEDROOM 3  
11' x 11' 2"



KEY PLAN:



LEGEND

	EWC	EUROPEAN WATER CLOSET WALL HUNG
	EWC	EUROPEAN WATER CLOSET FLOOR MOUNTED
	OW	WASH BASIN
	UR	URINAL
	FT	FLOOR TRAP
	RWP	RAIN WATER PIPE 160Ø PVC (6 kg)
	SP	SOIL PIPE 160Ø PVC (6 kg)
	WP	WASTE PIPE 100Ø PVC (6 kg)
	WP	WASTE PIPE 40Ø & 50Ø PVC (10 kg)
	HF	HEALTH FAUCET
	BV	BALL VALVE
	CWS	COLD WATER SUPPLY C <sub>pvc</sub> PIPE
	FWS	FLUSH WATER SUPPLY C <sub>pvc</sub> PIPE
	SL	75mm PVC SLEEVE FOR AC
	PL	PLUMBING SLEEVE
	PL	PLUMBING SLEEVE
	WC	WALL CUTOUT
	GT	GULLY TRAP
	IC	INSPECTION CHAMBER

NOTE:

1. ALL CWS C<sub>pvc</sub> PIPE MAIN LINES ARE 20mm Dia
2. ALL CWS C<sub>pvc</sub> PIPE TAPPING POINTS ARE 20mm Dia
3. ALL FWS C<sub>pvc</sub> PIPE MAIN LINES ARE 20mm Dia
4. ALL FWS C<sub>pvc</sub> PIPE TAPPING POINTS ARE 20mm Dia
5. 75mm X 75mm CUT OUT FOR WASH BASIN DRAIN PIPE
6. 160mm Dia SLEEVE FOR WASTE & SOIL PIPE
7. KITCHEN WASTE LINE 50mm Dia pipe
8. RAIN WATER DOWNCOMER PIPE SHALL BE 160mm DIA PIPE
9. WASH BASIN WASTE LINE 40mm Dia pipe

NOTE:

ALL DIMENSIONS ARE IN MILLIMETERS.  
 ALL DIMENSIONS TO BE CHKD. AT SITE.  
 DO NOT SCALE THE DRAWING  
 IN THE EVENT OF ANY DISCREPANCIES OR DIFFERENCES BETWEEN ARCHITECT DRAWINGS, STRUCTURAL DRAWING AND SITE CONDITIONS, IMMEDIATE REFERENCE IS TO BE MADE TO THE ARCHITECT PRIOR TO THE EXECUTION OF WORK AT THE SITE.

DATE	NO	REVISION	CHECKED

ARCHITECTS & EP CONSTRUCTION:



Taamaesek Engineering Consortium  
 New no. 5, Old no. 2a, Bishop Wallers  
 Avenue west, Mylapore,  
 Chennai - 600 004. Ph: 044-24671157/1139.  
 Fax : 044-24672237.  
 url: www.taamaesek.com  
 e-mail: info@taamaesek.com

CLIENT:



M/s. INDIAN BANK  
 254-260, INDIAN BANK CORPORATE OFFICE,  
 AVVAI SHANMUGAM SALAI, ROYAPETTAH, CHENNAI - 4.

PROJECT:

Tender ID: CO:EST:TNR:MBG:001:2023-24  
 PROPOSED CONSTRUCTION OF RESIDENTIAL BUILDING  
 (Stilt + 5 Floors) @MUSIRI SUBRAMANIAM SALAI, CHENNAI - 600 004.

DRAWING STAGE: GOOD FOR CONSTRUCTION

DRAWN BY: A.SHAJIDEEN

CHECKED BY: S.T.MURALI

SCALE: 1 : 100

DATE: 26.03.2025

DRAWING TITLE:

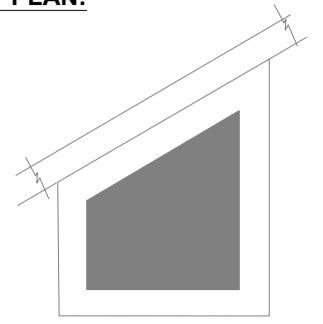
TOILET ENLARGEMENT PLAN

DRAWING NUMBER: TMA-292/RES/GFC/PHE/PHE-06

Project Code Number	Location of Project	Project Name	Type of Construction	Type of Drawing	Drawing number	Revision number
TMA/292	MYLAPORE	RESIDENTIAL	RESIDENTIAL	PHE	PHE-06	R1

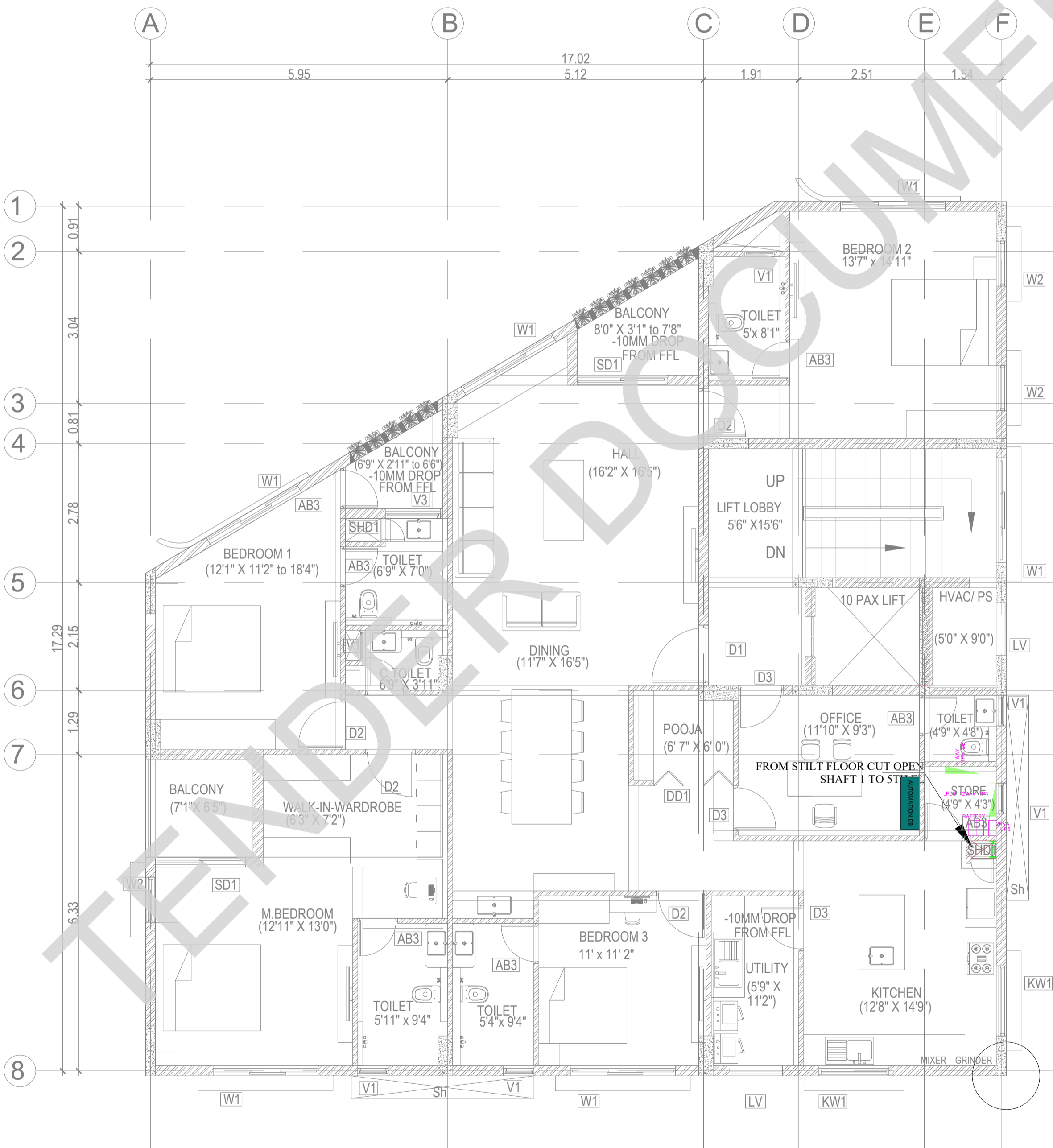
TOILET ENLARGEMENT PLAN

**KEY PLAN:**



**LEGENDS:**

SYMBOL	DESCRIPTION
	1X45W LED STREET LIGHT FITTING SINGLE ARM SMTR HEIGHT POLE
	LED FLOOD LIGHT
	ELECTRICAL-HUME PIPE-300MM
	ELECTRICAL-HDPE PIPE-110MM
	ELV-HDPE PIPE-110MM
	150mm (W) x 50mm (H) Ladder Type Cable Tray
	300mm (W) x 50mm (H) Ladder Type Cable Tray
	450mm (W) x 50mm (H) Ladder Type Cable Tray
	ELECTRICAL MAN HOLE-1250X1250X1000MM



**ABBREVIATIONS:**


- ES - ELECTRICAL SHAFT
- PS - PLUMBING SHAFT
- AC - AIR CONDITIONING
- FS - FIRE SHAFT
- TS - TELEPHONE SHAFT

**REVISION**

NO.	DATE	DESCRIPTION

NOTE:  
ALL DIMENSIONS ARE IN METERS.  
ALL DIMENSIONS TO BE CHKD. AT SITE.  
DO NOT SCALE THE DRAWING  
IN THE EVENT OF ANY DISCREPANCIES OR DIFFERENCES BETWEEN ARCHITECT DRAWINGS, STRUCTURAL DRAWING AND SITE CONDITIONS, IMMEDIATE REFERENCE IS TO BE MADE TO THE ARCHITECT PRIOR TO THE EXECUTION OF WORK AT THE SITE.

**ARCHITECTS & EP CONSTRUCTION:**

 Taamaesek Engineering Consortium  
New no. 5, Old no.2a, Bishop Wallers Avenue west, Mylapore, Chennai - 600 004. Ph:044-24671157/1139. Fax : 044-24672237. url:www.taamaesek.com e-mail: info@taamaesek.com


**CLIENT:**

 Indian Bank  
Mrs. INDIAN BANK  
254-260, INDIAN BANK CORPORATE OFFICE, AVVAI SHANMUGAM SALAI, ROYAPETTAH, CHENNAI - 4.

**PROJECT:**

Tender ID: CO.EST.TNDR-MBC-001-2023-24  
PROPOSED CONSTRUCTION OF RESIDENTIAL BUILDING (Stilt + 5 Floors) @MUSIRI SUBRAMANIAM SALAI, CHENNAI - 600 004.

**DRAWING STAGE: INFORMATION COPY**

DRAWN BY :	PS	NORTH  SHEET SIZE A2
CHECKED BY :	AK	
SCALE :	1:1000	
DATE :	19.09.2024	

**DRAWING TITLE:**

INTERNAL EECR TYPICAL FLOOR PLAN

Drawing number: TMA/292/IB/ELE & ELE/ELE-04

Project code	Project name	Stage of Construction	Type of Drawing	Drawing number	Revision
TMA-292	IB	IFC	ELECTRICAL	ELE-04	R1