

**KOLLUMEDU BRANCH & ATM - INTERIOR, FURNISHING, ELECTRICAL, DATA CABLING AND AIR  
CONDITIONING WORKS FOR INDIAN BANK (CUDDALORE ZONE)**

**SUMMARY**

<b>SL.NO</b>	<b>PARTICULARS</b>	<b>AMOUNT (Rs.)</b>
1	BRANCH INTERIOR WORK	
2	BRANCH FIXTURES WORK	
3	BRANCH ELECTRICAL WORK	
4	BRANCH & ATM DATA CABLING WORK	
6	ATM INTERIOR WORK	
7	ATM ELECTRICAL WORK	
	<b>TOTAL</b>	
<b>ALL RATES ARE EXCLUSIVE OF 18% GST</b>		

**KOLLUMEDU BRANCH & ATM - INTERIOR, FURNISHING, ELECTRICAL, DATA CABLING AND AIR  
CONDITIONING WORKS FOR INDIAN BANK (CUDDALORE ZONE)**

**COST ESTIMATE / BILL OF QUANTITIES (INTERIOR)**

S NO	WORK DESCRIPTION	QTY	UNIT	RATE(Rs)	AMOUNT (Rs)
<b>1</b>	<b><u>PARTITIONS</u></b>				
<b>a</b>	<b><u>FULL HEIGHT &amp; HALF HEIGHT BLOCKED PARTITION</u></b>				
	Providing and Fixing full height double skin fully blocked partitions up to RCC ceiling height using aluminium hollow section of size 2"x 2" frame work having 2'x2' square grid on both sides covered with with 6mm plywood of approved make and Finished with 1.0 mm tk. laminates ( <b>as per standard - Bank approved colors</b> ) with necessary grooves of 1mm thick. The rate shall include the cost of providing 100mm wide skirting with 1mm tk. laminate (Black) at base and a 100mm wide border (Brown) at the top including making necessary slots for cable conduits to pass through and all incidental materials etc., complete.	144.00	Sft		
<b>b</b>	<b><u>FULL HEIGHT PARTITION WITH GLASS PANELS FOR MANAGER</u></b>				
	Providing full height double skin Partition with Partly Glass Panels using aluminium hollow section of size 2"x 2" frame work having 2'x2' square grid on both sides covered with with 6mm plywood of approved make and Finished with 1.0 mm tk. laminates ( <b>as per standard - Bank approved colors</b> ) with necessary grooves of 1mm thick. The rate shall include the cost of providing 100mm wide skirting with 1mm tk. laminate (Black) at base and a 100mm wide border (Brown) at the top and shall include the cost of providing 10mm tk. Partitions frame is to be fixed properly to the roof slab, wood lipping with Teak wood finish to be fixed to fix the 12mm thk glass with etching for full height partition plain float glass with etching Designe to suitable sizes, including making necessary slots for cable conduits to pass through and all incidental materials etc., complete.	220.00	Sft		
<b>c</b>	<b><u>LOW HEIGHT PARTITION</u></b>				
	Providing low height double skin partitions along with Counter Divider partition wicket gate of the same type uusing aluminium hollow section of size 2"x 2" frame work having 2'x2' square grid on both sides covered with with 6mm plywood of approved make and Finished with 1.0 mm tk. laminates ( <b>as per standard - Bank approved colors</b> ) with necessary grooves of 1mm thick. The rate shall include the cost of providing 100mm wide skirting with 1mm tk. laminate (Black) at base& including making necessary slots for cable conduits to pass through and all incidental materials etc., complete.	96.00	Sft		

S NO	WORK DESCRIPTION	QTY	UNIT	RATE(Rs)	AMOUNT (Rs)
d	<b>CASH PARTITIONS ( BULK CASH CABIN SIZE 5'0"x8'0")</b>				
	Providing and Fixing full height upto 7' 3" from floor level, semi grided plywood partition for cash cabin, using aluminium sections of 2" x 2" size spaced at 2feet x 2feet c/c maximum for the frame work grid, fixed with 8mm plywood on both sides and lined with 1mm tk. laminate (bank approved laminates only ) with necessary grooves of 1mm thick, The rate shall include the cost of providing 100mm wide skirting with 1mm tk. laminate (Black) at base and a 100mm wide border (Brown) shade at the top and shall include the cost of providing wood lipping with teak wood finish ornamental aluminium grille to suitable sizes, including provision of opening at customer side and clerical side making necessary slots for cable conduits to pass through and all incidental materials etc., complete.	91.00	Sft		
e	<b>CASH CABIN TOP ALUMINIUM GRILL</b>				
	Providing and fixing in position readymade anodized alumium grill of approved design (7.5 mm thick 35mm x 25mm opening aluminum grill (AL 101)) fixed with suitable corner beadings, rubber beadings and quality fixed with continuous steam beech / teak wood beads of approved shape (finished 35 x 25 mm) all round polished (in cash cabin)	46.75	Sft		
f	<b>UPS ROOM PARTITION (FULL HEIGHT/ HALF HEIGHT)</b>				
	Providing and Fixing full height/Half double skin fully blocked partitions up to RCC ceiling height using aluminium hollow section of size 2"x 2" frame work having 2'x2' square grid on One Side Covered with hilux calcium silicate of approved make and Finished with Putty and Emulsion Paint of Banks Approved Colour with stainless steel fastners etc and Onether one side covered with with 6mm plywood of approved make and Finished with 1.0 mm tk. laminates (as per standard - Bank approved colors) with necessary grooves of 1mm thick. The rate shall include the cost of providing 100mm wide skirting with 1mm tk. laminate (Black) at base and a 100mm wide border (Brown) at the top including making necessary slots for cable conduits to pass through and all incidental materials etc., complete.	0.00	Sft		
2	<b>FRONT COUNTER 12MM GLASS</b>				
	Providing front glazing for cash cabin above counter from 3'9" to 7'0" height, and in between banking counters using 12mm thick plain glass including edge polishing & etching.	132.00	Sft		
3	<b>DOORS</b>				
a	<b>ENTRANCE DOOR</b>				

S NO	WORK DESCRIPTION	QTY	UNIT	RATE(Rs)	AMOUNT (Rs)
	To be made out of 12mm thk glass with etching as per design. The glass with etching has to be fixed with top & sides rails of 2½"x4" and bottom rails of size 2½" x 6". The rails to be made out of beech wood The door shall have 18" long s/s handle (as shown in the drawing ) and also double action floor spring of specified make. The door frame to be mde out of 5"x 2½" best quality beech wood. The etching in glass pattern to be done strictly following instructions of the Architect or following the drawing attached. The exposed wood of frames, rails to be polished as per instructions of the architect. NB: The size of the door may slightly vary as per site conditions for matching the elevation on the fixed glazing. All exposed edges of the glass to be machine polished. The rails are to be made as per the design of the architect. Bank Entrance door	42.00	Sft		
<b>b</b>	<b>FLUSH DOORS</b>				
	Safe Room (3'0"x7'0")	1.00	No		
	Record Room (3'0"x7'0")	1.00	No		
	Dining Room (3'0"x7'0")	1.00	No		
	Ups Room (2'6"x5'0")	1.00	No		
<b>c</b>	<b>SEMIGLAZED DOORS</b>				
	Manager (3'0"x7'0")	1.00	No		
	Manager & B.Cash (2'6"x7'0)	2.00	No		
<b>d</b>	<b>WICKET DOOR</b>				
	Wicket Door (3'0"x4'0")	1.00	No		
<b>4</b>	<b>CHEQUE DROP BOX/COMPLAINT BOX (1'6" x 1'6"x 1'0")</b>				
	Providing cheque drop box/ Complaint/Suggestion 1'6" length, 1'0" wide and 1'6" height with 19mm tk. Plywood and lined with 1mm tk. Laminate(Fusion Maple - Wood finish) for top & exposed sides. Exposed edges of plywood shall be fixed with teak wood beading suitably polished and the back side shall be covered with 6mm tk. plywood. The inner sides shall be painted with two coats of enamel paint over acoat of primer & two coats of putty.	1.00	No		
<b>5</b>	<b>ROLLER BLINDS:</b>				
	Providing and fixing Roller blinds for all windows Colour and materials of approved make quality and colour shade and pattern selection by the Architect, Rates including material cost and labour charges etc. complete.	99.00	Sft		
<b>6</b>	<b>WALL/COLUMN PANELLING</b>				
	Aluminum section of size 2"x1" (grid 2'0"x2'0") frame work and covered with 8mm commercial plywood (one side fixing) finished in lamination. The paneling area given below the false ceiling level. Cost includes for aluminum frame to be extended and fitted up of roof ceiling. Size	64.00	Sft		

S NO	WORK DESCRIPTION	QTY	UNIT	RATE(Rs)	AMOUNT (Rs)
7	<b>FALSE CEILING (GYPBOARD)</b>				
	Supplying and Erecting of Saint Approved make Gypsum board false ceiling at different heights as per drawing and Framework shall be made with "Gyrpoc " G.I. Section. Perimeter shall be fixed around the wall and partition of size 20 x 28 x 30 x 0.5 thick / Ceiling angle of size 25 x 10 x 0.5 thick shall be suspended from structural soffit with 1220 c/c distance on both direction and fixed with soffit cleat of size 27 x 37 x 25 x 1.6 thick and rawl plug / Intermediate channel of size 15 x 45 x 15 x 0.9 thick to support the ceiling section / Ceiling section of size 80 x 26 x 51 x 0.5 thick shall be connected to the intermediate section at 457mm c/c with connecting clip of size 2.64 diameter. 12.5mm thick Gypsum plain board to be fixed on the ceiling section with drywall screws at 230mm c/c on both direction.	381.00	Sft		
	Gypsum board joints shall be connected with fibre tape and joints to be finished with putty, the putty shall be applied fully on the gypsum board area. Cost include 2 coats of emulsion paint and 1 coat of primer, cutout opening for light fittings, stepping, box opening, provision for hidden lights arrangements. Cost include wastage, hardwares, tools, lead, lift, loading, unloading charges, labour charges, transport and etc, No extra cost shall be entertained in completing the entire work in all respect. <b>Note: Measurements shall be made flat area and verticals in SFT.</b>				
8	<b>FALSE CEILING (MINERAL FIBRE BOARD GRID)</b>				
	Providing and fixing tile Grid ceiling of Mineral fiber ceilings of board with "Narrow Reveal edge Corner bevel" 14mm grid (Bolt Slot) section ) and RH99 (H1893M)" tile with "BEVELLED TEGULAR Suprafine 15 mm/ Silhouette grid section ) in aluminium powder coated sections supported from ceiling (4'0"x4'0"grid for support rods) with necessary GI framework of every 2'0"x2'0" grid junction, proper levelling and finished of the joints & top surface as per manufactures specifications and all accessories, arrangements and etc. All edges shall be perfectly straight. Tile shall be carefully laid with neat arrangements like hand gloves and etc. Cost include replacement of damaged or stained tile. Cost include all necessary hardwares like nails, screws, wastages, transports, loading, unloading charges, labours, lead, lift, materials, tools and etc. Complete as per drawings and instructions of the Architect. APPROVED MAKE: ARMSTRONG	592.00	Sft		

S NO	WORK DESCRIPTION	QTY	UNIT	RATE(Rs)	AMOUNT (Rs)
	<p>Mineral fiber board joints shall be connected with fibre tape and joints to be finished with putty, the putty shall be applied fully on the gypsum board area. Cost include 2 coats of emulsion paint and 1 coat of primer, cutout opening for light fittings, stepping, box opening, provision for hidden lights arrangements. Cost include wastage, hardwares, tools, lead, lift, loading, unloading charges, labour charges, transport and etc, No extra cost shall be entertained in completing the entire work in all respect. Note: Measurements shall be made flat area and verticals in SFT.</p>				
	<b>TOTAL AMOUNT</b>				

KOLLUMEDU BRANCH & ATM - INTERIOR, FURNISHING, ELECTRICAL, DATA CABLING AND AIR CONDITIONING WORKS FOR INDIAN BANK (CUDDALORE ZONE)					
COST ESTIMATE / BILL OF QUANTITIES (FURNISHING)					
S NO	WORK DESCRIPTION	QTY	UNIT	RATE(Rs)	AMOUNT (Rs)
1	<b>MANAGER TABLE</b>				
	Manager table as per drawing done with structure made of 18mm plywood with drawer unit comprising of 1 drawer, 1 filing shelf fixed with pull out door ( box type hinges), locks, D type handles and all accessories to be provided.All drawers, corners, doors to be finished with beach wood lipping/beading, melamine polished., push in type keyboard, all drawers and key board on telescopic channels. All exposed edges Teak/beach wood beadings is finished with melamine polished and inside laminated with 0.8mm laminate. The table to be topped with 12mm float glass with beveling on all four sides. The side unit is provided with two drawers and filing shelf with two pull out doors, finished in same manner.CPU platform with foot rest to be provided. wall to table gap to closed with plywood.				
	Branch Manager 6'0"x2'6"	1.00	No		
2	<b>FRONT COUNTER AND BULK CASH COUNTER</b>				
	Providing and assembling banking counter and Cash,single window counter unit as shown in drawing of size not less than 5'0" x 2'6" x 2'6" or as per site requirements, with regular drawer - 1 No. and shelves on one side, a keyboard drawer at centre and a platform for CPU onto other side for each counter as shown in drawing using 19mm thick commercial plywood lined with 1.0mm thick laminate(Bank approved colors) Cash and single window with 12mm thick glass (to be strictly followed) in front side for all the exposed surfaces, including providing skirting 4" wide with 1.0mm thk laminate (Indian Bank Blue) on both sides to match with the adjoining partition and 4" wide border at top with 1.0mm thk laminate (Indian Bank Blue).The customer top at 3'9"ht of 1'3" width & working counter top of 2'6" width to be fixed with 19mm <b>Granite top (approved)</b> with double nosing @ front side as shown in the drawing				
	All the plywood edges shall have teak wood lipping and all inner surfaces shall be painted with two coats of enamel paint over a coat of primer & two coats of putty. The rate shall include providing, fixing & painting a foot rest using first class seasoned country frame of size 3" x 1 1/2".Necessary hardware fittings like draw sliders, hinges, multipurpose locks with set keys, handles shall be provided.				
	Bulk cash & SWO	5.00	Rft		
	Working counters	36.00	Rft		
3	<b>STORAGE CUPBOARD</b>				

S NO	WORK DESCRIPTION	QTY	UNIT	RATE(Rs)	AMOUNT (Rs)
	Providing and fixing filing cabinet in manager cabin for a height of 2'6" & 7' ht. made of 18mm plywood structure comprising of suitable intermediate horizontal racks with open type doors, finished with 1mm laminate and teak wood beadings neatly melamine polished and inside finished with 0.8mm laminate with locks, handles and all accessories				
	Manager LHSC	10.00	Sft		
	B.Cash & SWO LHSC	10.00	Sft		
	Banking Hall FHSC	0.00	Sft		
	Record Room FHSC	286.00	Sft		
	Record Room FHSC	0.00	Sft		
	EB Wooden Box	16.00	Sft		
<b>4</b>	<b>WRITING LEDGE WITH 12mm GLASS TOP</b>				
	Made out 18 mm ply as per design and exposed external surfaces to be laminated and internal surface to be painted with top provided 12 mm thk etched glass with machine polished edges . The entire work has to be done to the satisfaction of the architect. The design given has to be strictly followed	1.00	No		
<b>5</b>	<b>NOTICE BOARD (4'0"x3'0")</b>				
	Providing and fixing of the soft board on the customer lobby made of jolly board with a fabric of B / R @ 200 / - per meter .The design and the entire work has to be done as per the instructions of the architect a the time of execution	12.00	Sft		
<b>6</b>	<b>ROLLING SHUTTER COVER BOX</b>				
	Supplying & fixing of Rolling shuttercoverbox using 3mmthk Aluminium Composite Panels of Al strong or equivalent makeover necessary framework.The joints formed by the junction of two panels shall be filled with silicon sealent,boxing with above entrance partiton and rolling shutter and finished As per bank Standards (APPROVED SHADE - SILVER GREY)	54.00	sft		
	<b>TOTAL AMOUNT</b>				

**KOLLUMEDU BRANCH & ATM - INTERIOR, FURNISHING, ELECTRICAL, DATA CABLING AND AIR  
CONDITIONING WORKS FOR INDIAN BANK (CUDDALORE ZONE)**

**COST ESTIMATE / BILL OF QUANTITIES (ELECTRICAL)**

S NO	WORK DESCRIPTION	QTY	UNIT	RATE (Rs)	AMOUNT (Rs)
<b>A</b>	<b>SUPPLY INSTALLATION &amp; COMMISSIONING OF THE FOLLOWING</b>				
<b>1</b>	<b>MAIN DB (8WAY VTPN DB)</b>				
	Three Phase, Vertical Distribution board with neutral bar, earth bar, cables ties, top and bottom removable gland plate and with necessary adopter boxes if any. The DB should be IP 42 metallic double door with provision of MCB etc as required including cutting of wall and plastering the same with neat finish. It comprising as follows:-				
	Incomer :				
	100A TPN MCCB -1Nos				
	Outgoings:				
	63A TP MCB -4Nos				
	32/25/20A SP MCBs- 5Nos	Set	1		
<b>B</b>	<b>SUPPLY INSTALLATION &amp; COMMISSIONING OF THE FOLLOWING</b>				
<b>1</b>	<b>LIGHTING DB (4WAY TPN DB)</b>				
	Three Phase, Phase Segregated Distribution board with neutral bar, earth bar, cables ties, top and bottom removable gland plate and with necessary adopter boxes if any. The DB should be IP 42 metallic double door with provision of MCB etc as required including cutting of wall and plastering the same with neat finish. It comprising as follows:-				
	Incomer : 40A TPN MCB				
	Outgoings:				
	10/6A SP MCBs- 12Nos	Set	1		
<b>2</b>	<b>POWER DB (4WAY TPN DB)</b>				
	Three Phase, Phase Segregated Distribution board with neutral bar, earth bar, cables ties, top and bottom removable gland plate and with necessary adopter boxes if any. The DB should be IP 42 metallic double door with provision of MCB&ELCB etc as required including cutting of wall and plastering the same with neat finish. It comprising as follows:-				
	Incomer : 63A TPN MCB				
	Outgoings:				
	32/25/20A SP MCBs- 12Nos	Set	1		
<b>3</b>	<b>COMPUTER DB (10WAY SPN DB)</b>				

S NO	WORK DESCRIPTION	QTY	UNIT	RATE (Rs)	AMOUNT (Rs)
	10Way SPN Distribution board with neutral bar,earth bar,cables ties,top and bottom removable gland plate and with necessary adopter boxes if any.The DB should be IP 42 metallic double door with provision of MCB&ELCB etc as required including cutting of wall and plastering the same with neat finish.It comprising as follows:-				
	Incomer : 40ADP MCB				
	Outgoings:				
	10A SP MCBs- 6Nos	Set	2		
4	Supply&Installation of the following with the necessary enclosure and adopter boxes if necessary				
	a)63A TPN MCB	Set	2		
	b)63A DP MCB	Set	4		
5	Supply&Installation of 32A Metal Clad Socket with top in a specified company manufactured box with suitable rating MCB for AIR CONDITIONS	set	0		
6	Supply&Installation of 63A 4Pole Change over switch	set	1		
7	Supply and Fixing for 63A Phase Selector switch with enclosure and adopter boxes if necessary	set	2		
<b>C</b>	<b>LT CABLES</b>				
	3.5Corex50Sqmm Aluminium Armored cable Main DB	Mtr	55		
	3.5Corex35Sqmm Aluminium Armored cable power DB	Mtr	45		
	3.5Corex16Sqmm Aluminium Armored cable LDB Main	Mtr	40		
2	End termination of following cable with double compression NFLP gland and crimping sockets, Lugs				
	3.5Corex50Sqmm Aluminium Armored cable Main DB	Set	2		
	3.5Corex35Sqmm Aluminium Armored cable power DB	Set	2		
	3.5Corex16Sqmm Aluminium Armored cable LDB Main	Set	4		
<b>D</b>	<b>WIRING</b>				
1	Providing and laying Light/Fan point wiring with 3 of 1.5 sqmm PVC insulated copper conductor to be laid in 2mm suitable PVC conduit with Bend,Couplings, etc.. and fixing with clamps screws etc.All conduits to be laid above the false ceiling/partition/concealed in the wall etc. Wiring to be connected with supply & Fixing of 6A Modular type switch(MK/ROMA) with suitable Modular plate and metal Box				
	One light Controlled by One Switch	Pts	12		
	Two light Controlled by One Switch	pts	10		
	6A Switch box Sockets in the switch board itself	Pts	10		
	Ceiling fan with regulator	Pts	3		
	wall bracket fan point (6A socket with 6A switch)	pts	10		
	Calling bell point with Calling bell instrument	Pts	1		
	Exhaust fan point	pts	3		

S NO	WORK DESCRIPTION	QTY	UNIT	RATE (Rs)	AMOUNT (Rs)
2	Supply & Wiring with Flame Retardant insulated PVC wire as per grade IS 994 for Circuits,Computer point,Power points within 2mm thk PVC conduits with necessary accessories and with proper clamps and to be concealed below the false ceiling It comprises as follows:-				
a	3 Runs of 2.5Sqmmcopper wire in PVC conduit for lighting circuit mains	Mtr	230		
b	3 Runs of 2.5Sqmmcopper wire in PVC conduit for Power points	Mtr	220		
c	3 Runs of 2.5Sqmm copper wire in PVC conduit for computer points	Mtr	210		
d	2 Runs of 4Sqmm copper wire+1.5Sqmm copper wire in PVC	Mtr	200		
e	2 Runs of 6Sqmm copper wire+2.5Sqmm copper wire in PVC conduit	Mtr	40		
f	4 Runs of 6Sqmm copper wire+2.5Sqmm copper wire in PVC conduit	Mtr	35		
<b>E</b>	<b>POWER POINT OUTLETS</b>				
1	Supply&Installation of 3 Nos of 6A Sockets controlled by 2of 5A Switches with front plate with enclosure and other accessories etc.. <b>(MK /ROMA)</b>	Set	15		
2	Supply&Installation of 1Nos of 6A Socket controlled by 1No 6A Switch with front plate with enclosure and other accessories etc.. <b>(MK /ROMA)</b>	Set	10		
3	Supply&Installation of 1Nos of 16A Socket controlled by 1No 16A Switch with front plate with enclosure and other accessories etc.. <b>(MK /ROMA)</b>	set	8		
<b>F</b>	<b>LIGHTING FIXTURES</b>				
1	Supply, Fixing & Commisioning of Recess mounting type compact vertical Flat Panel 34W LED fitting in Down Rods with white finish and other fixing accessories. <b>(Crompton, Wipro,Philips)</b>	set	17		
2	Supply, Fixing & Commisioning of Recess mounting type compact vertical round shaped 1x15W LED downlighter fitting with white finish and other fixing accessories., <b>(Crompton, Wipro,Philips)</b>	set	7		
3	Supply&Fixing of Patti Type LED 20Watts Fiittings <b>(Crompton, Wipro,Philips)</b>	Set	13		
4	Supply&Fixing exhaust fan <b>(Crompton, Almonard)</b>	set	3		
5	Supply&Fixing & Commisioning of wall mounting Steel Metal Fan with necessary Down Rods and with all fixing accessories., <b>(Crompton / Havells)</b>	Set	10		
6	Supply&Fixing & Commisioning of 48" ceiling fan with necessary Down Rods and with all fixing accessories., <b>(Crompton / Havells)</b>	Set	4		
7	Supply and fixing of three LED type RYB indication lamps in suitable MS box in banking hall for indication of TNEB supply in suitable MS pipe with 1.5 sq. mm FRLS multi stranded copper wire (Approximate length wire is 15 Mtr.)	Set	1		
<b>G</b>	<b>EARTHING</b>				

S NO	WORK DESCRIPTION	QTY	UNIT	RATE (Rs)	AMOUNT (Rs)
1	Providing dedicated earthing with 600x600x3.15 mm copper plate along with 50mm dia.10feet long G.I pipe with other accessories in the earth filled with necessary salt,charcoal,etc. It should be covered with G.I Manhole cover with necessary civil works.etc..	Set	1		
2	Supply & Laying of 10 Sqmm PVC Insulated Multi strand copper conductor laid in 25mm dia PVC pipe for Dedicated earth leads from the earth electrodes to the UPSsystem	Mtr	40		
3	Providing general earthing with 50mm dia.10feet long G.I pipe with other accessories in the earth filled with necessary salt,charcoal,etc. It should be covered with G.I Manhole cover with necessary civil works.etc..	Set	1		
4	Supply&Laying of 8SWG copper wire	Mtr	40		
<b>F</b>	<b>TELECOMMUNICATION</b>				
1	Supply&Laying of 2 Pair Telephone Cable within PVC Conduit and its necessary accessories etc..	Mtr	170		
2	Supply&Laying of 20Pair Telephone Cable within PVC Conduit and its necessary accessories etc..	Mtr	45		
3	Supply&Installation of RJ II Jack with necessary Face plate and Box for connecting telephone points	Set	12		
4	Supply & fixing of 10 pair KRONE Box with lock and key	Set	1		
	<b>TOTAL AMOUNT</b>				

**KOLLUMEDU BRANCH & ATM - INTERIOR, FURNISHING, ELECTRICAL, DATA CABLING AND AIR  
CONDITIONING WORKS FOR INDIAN BANK (CUDDALORE ZONE)**

**COST ESTIMATE / BILL OF QUANTITIES (DATA CABLING)**

<b>S NO</b>	<b>WORK DESCRIPTION</b>	<b>QTY</b>	<b>UNIT</b>	<b>RATE</b>	<b>AMOUNT</b>
	<b>DATA CABLING</b>				
1	Supply&Laying of CAT 6 Data Communication cable in 2mm thk heavy duty 20mm dia PVC conduit and makinng holes in the	410.00	Mtr		
2	Supply&Installation,Testing&Commisioing of Modular type 1Nos of RJ45 Female Jack housed in GI anodised metal box with suitable Faceplate fixing the same in the wall/partitions with all accessories etc. as required.	15.00	Set		
3	Supply and fixing of 1M Mounting Cord	15.00	Set		
4	Supply and fixing of 2M Mounting Cord	15.00	Set		
5	Supply&Installation of 24por cat6 SWITCH	1.00	Set		
6	Supply and installation of 24port cat 6 jack panel	1.00	Set		
7	Supply and installation of 9u wall mounting rack	1.00	Set		
	<b>TOTAL AMOUNT</b>				

**KOLLUMEDU BRANCH & ATM - INTERIOR, FURNISHING, ELECTRICAL, DATA CABLING AND AIR  
CONDITIONING WORKS FOR INDIAN BANK (CUDDALORE ZONE)**

**COST ESTIMATE / BILL OF QUANTITIES (ATM INTERIOR)**

<b>S NO</b>	<b>DESCRIPTION</b>	<b>QTY</b>	<b>UNIT</b>	<b>RATE (Rs)</b>	<b>AMOUNT</b>
<b>1</b>	<b>FULLY GLAZED ALUMINIUM PARTITION &amp; DOOR</b>				
<b>a</b>	<b>FRONT BOTH SIDE FIXED PARTITION:</b>				
	Providing and fixing Fully glazed partition in <b>ATM Entrance</b> , made of <b>aluminium MRF vapocured twin style frame</b> work of size:-58 x38mm, 20 micron of <b>IB-Black</b> colour finished with <b>10 mm thk float glass</b> with derk silicon (SAINT GOBAIN or MODIGUARD) up to the false ceiling level.Support to be done to the rcc ceiling, but measurements would be taken below the false ceiling level only.	108.00	Sft		
<b>b</b>	<b>ENTRANCE DOOR (Size : 3'6"x7'0")</b>				
	Providing and fixing of Fully glazed door for ATM entrance, made of <b>aluminium MRF vapocured twin style frame</b> of size:-100 x 50 mm, 20 micron of approved colour finished with <b>10 mm edge polished glass</b> with silicon (SAINT GOBAIN or MODIGUARD) up to the 7'0" height, door to be provided with dorma make <b>12" SS handle, lock and door closure(approved make) &amp; stopper</b>	28.00	Sft		
<b>2</b>	<b>ACP WALL PANELLING</b>				
	Providing and fixing Wall Panelling using 3mm thk Aluminium Composite Panels of Alstrong or equivalent make over necessary frame work. The joints formed by the junction of two panels shall be filled with silicon sealent. The Wall Panelling / Boxing shall be erected 75 mm above the Highest False Ceiling Level. However, only exposed portions below the Highest False Ceiling Level shall be considered for payment. Pattern of wall panelling to be got colour approved from the Bank.	351.00	Sft		
<b>3</b>	<b>FALSE CEILING (MINERAL FIBRE BOARD GRID)</b>				

S NO	DESCRIPTION	QTY	UNIT	RATE (Rs)	AMOUNT
	Providing and fixing tile Grid ceiling of Mineral fiber ceilings of board with "Narrow Reveal edge Corner bevel" 14mm grid (Bolt Slot) section ) and RH99 (H1893M)" tile with "BEVELLED TEGULAR Suprafine 15 mm/ Silhouette grid section ) in aluminium powder coated sections supported from ceiling (4'0"x4'0"grid for support rods) with necessary GI framework of every 2'0"x2'0" grid junction, proper levelling and finished of the joints & top surface as per manufactures specifications and all accessories, arrangements and etc. All edges shall be perfectly straight. Tile shall be carefully laid with neat arrangements like hand gloves and etc. Cost include replacement of damaged or stained tile. Cost include all necessary hardwares like nails, screws, wastages, transports, loading, unloading charges, labours, lead, lift, materials, tools and etc. Complete as per drawings and instructions of the Architect. APPROVED MAKE: ARMSTRONG	110.00	sft		
<b>4</b>	<b>ATM SOCKETS COVER BOX (1'0"x1'0"x0'6")</b>				
	All ATM Sockets, IO Box to be covered using 12mm plywood structure with 1mm thk lamination finish (matching ACP color colour), Shutter type door (up & down) with lock, handle and necessary wire manager groove (at bottom) to be provided.	3.00	Nos		
<b>5</b>	<b>PIN-UP NOTICE BOARD</b>				
	Providing & fixing Pin-up Board of approx size of 600mm x 800mm made of textile wrapped on 12 mm thick soft board with 6 mm com ply backing and a frame work of 50mm wide with 24 mm thk com ply, finished with 1 mm thk Laminate. The Pin-up Board shall be set into the wall panelling with necessary fittings as directed by the Bank.	0.00	Nos		
<b>6</b>	<b>WRITING DESK</b>				
	Writing desk to be done as per plan with 12mm glass topped with pigeon holes made with 18mm plywood structure with additional boxing as per design,	0.00	Nos		
<b>7</b>	<b>CHEQUE DROP BOX/ COMPLAINT</b>				
	Providing cheque drop box/ Complaint/Suggestion 1'6" length, 1'0" wide and 1'6" height with 19mm tk. Plywood and lined with 1mm tk. Laminate(Fusion Maple - Wood finish) for top & exposed sides. Exposed edges of plywood shall be fixed with teak wood beading suitably polished and the back side shall be covered with 6mm tk. plywood. The inner sides shall be painted with two coats of enamel paint over acoat of primer & two coats of putty.	0.00	Nos		
<b>8</b>	<b>ROLLING SHUTTER COVER BOX</b>				

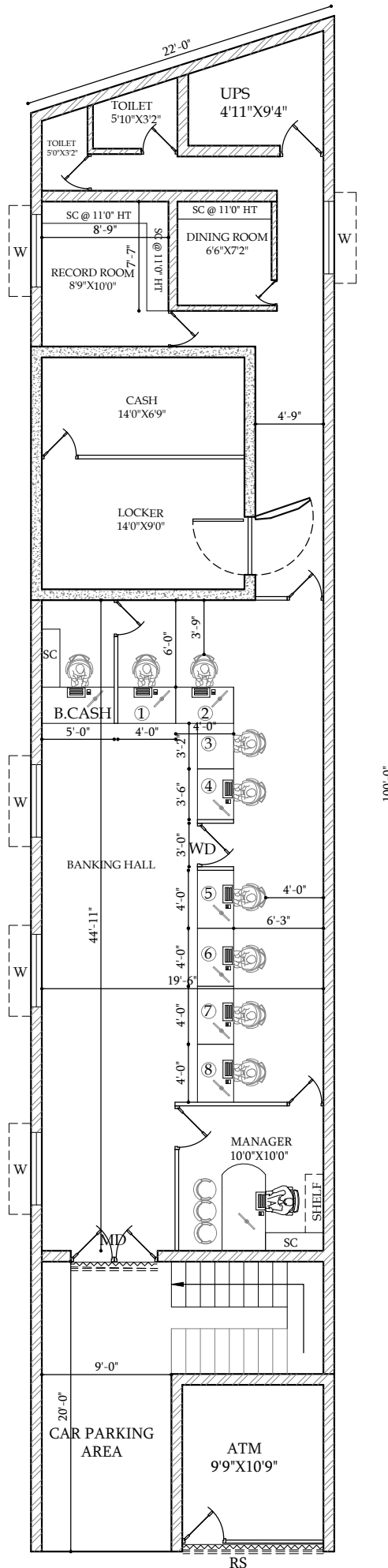
S NO	DESCRIPTION	QTY	UNIT	RATE (Rs)	AMOUNT
	Supplying & fixing of Rolling shuttercoverbox using 3mmthk Aluminium Composite Panels of Al strong or equivalent makeover necessary framework.The joints formed by the junction of two panels shall be filled with silicon sealent,boxing with above entrance partiton and rolling shutter and finished As per bank Standards (APPROVED SHADE - SILVER GREY)	64.00	Sft		
	<b>TOTAL</b>				

**KOLLUMEDU BRANCH & ATM - INTERIOR, FURNISHING, ELECTRICAL, DATA CABLING AND AIR  
CONDITIONING WORKS FOR INDIAN BANK (CUDDALORE ZONE)**

**COST ESTIMATE / BILL OF QUANTITIES (ATM-ELECTRICAL)**

S NO	WORK DESCRIPTION	QTY	UNIT	RATE	AMOUNT
<b>A</b>	<b>MAINS &amp; DISTRIBUTION BOARDS</b>				
1	Supply, erection, testing and commissioning of three phase 4 WAY, TPN MCB DB double door vertical type, IP 42 powder coated with				
	40A TPN MCB – 1No as INCOMER				
	32A DP MCB-1No For UPS				
	10/25/32A – 4Nos as OUTGOING				
	Including all interconnections & accessories etc	1.00	No		
	<b>POWER CABLES &amp; CONDUIT WIRING</b>				
	Supplying, laying, testing & commissioning of PVC / LT insulated 1.1KV grade aluminium armoured conductor cables of the following sizes, laid in trenches below ground level/ clamped on to the walls as per site condition.				
a	3.5C x 25Sqmm aluminium armoured PVC cable	20.00	mtr		
<b>C</b>	Supplying and terminating the end of cables of the following sizes using Siemens type single compression cable glands, crimping type aluminium / copper sockets of required size, gland earthing clips etc., complete.				
a	3.5C x 25Sqmm aluminium armoured PVC cable	2.00	Set		
<b>D</b>	<b>AIR CONDITIONING WIRING &amp; ACCESSORIES</b>				
1	Supply&Installation of 32A Metal Clad Socket with top in a specified company manufactured box with suitable rating MCB for AIR CONDITIONS	2.00	No		
2	Wiring in position 2 runs of 4.0 sq.mm. cable and 1 run of 2.5 sq.mm cable for earth from Main D.B. to 2 Nos split air – conditioners in P.V.C. conduit pipes including chasing in walls / floor wherever necessary.	20.00	Mtr		
<b>E</b>	<b>UPS WIRING &amp; ACCESSORIES</b>				
1	Supply, erection, testing and commissioning of single phase 6 WAY, SPN MCBDB double door type, IP 42 powder coated for UPS and Emergency Lighting with				
	40A DP MCB – 1No as INCOMER				
	10A SP MCB – 4Nos. as OUTGOING				
	Including all interconnections & accessories etc., complete.	1.00	Set		
2	Wiring in position 2 runs of 6.0 sq.mm. cable and 1 run of 4.0 sq.mm cable for earth from Main D.B. to UPS and UPS to UPS DB.	10.00	Mtr		

S NO	WORK DESCRIPTION	QTY	UNIT	RATE	AMOUNT
3	Wiring in position 3 runs of 2.5.sq.mm cable for circuits from UPS.Lighting,Raw power required places in P.V.C. Conduit pipes including chasing in walls / floor wherever necessary	35.00	Mtr		
4	Supply,fixing, testing & commissioning of 2No. 16A multi pin socket outlet in UPS circuit controlled with 1No. 16A one way switch in a steel sheet enclosure with 8 module top plate including dummies and incidental materials etc.,	2.00	No		
F	<b>LIGHTING WIRING</b>				
	Supply,fixing, testing & commissioning of the following switch controls in steel sheet enclosure including 3 units of 1.5sqmm, steel sheet enclosure & modular top plate and all incidental materials etc., complete.				
1	One light Controlled by One Switch	1.00	No		
2	1 No. 6A socket controlled by single switch	2.00	No		
G	<b>LIGHTING &amp; FIXTURES</b>				
1	SFTC for the following light fittings with required hardwares such as suspension wires from ceiling, false ceiling, anchor fasteners, chains, bolts, nuts etc., complete.				
a	36 watts LED light fitting with 2'X2'	2.00	No		
b	15 watts LED round fitting with LED as <sup>2</sup>	4.00	No		
c	20watts LED Patty fitting	1.00	No		
H	<b>DATA POINT</b>				
1	Supply&Laying of CAT 6 Data Communication cable in 2mm thk heavy duty 20mm dia PVC conduit	30.00	mtr		
2	Supply&Installation,Testing&Commisioing of Modular type 1Nos of RJ45 Female Jack housed in GI anodised metal box with suitable Faceplate fixing the same in the wall/partitions with all accessories etc. as required.	2.00	No		
I	<b>EARTHING</b>				
1	Providing earthing two numbers , One for ATM and another for AIR-CONDITIONERS including excavating the P.C.C. floor/ earth to 6'0" depth and providing earthing with 50mm dia. G.I. pipe with perforations connected through copper wire including copper flat including copper plate of size 300mm x 300mm, G.I. bolts and filled up with layers of charcoal, salt and earth. (Earth provided for computers shall not be used for any other purpose)	1.00	No		
2	Supplying and laying of 6 Sqmm multi stranded copper wire for UPS earth in suitable PVC conduit with all incidental materials etc., complete.	18.00	Mtr		
	<b>TOTAL AMOUNT</b>				



## PROPOSED INTERIOR FURNISHING WORK FOR INDIAN BANK AT KOLLUMEDU BRANCH (CUDDALORE ZONE)

### NOTE

- 1) ALL DIMENSIONS ARE IN FEET & INCHES
- 2) DRAWING TO BE READ IN CONJUNCTION WITH DETAILS
- 3) ALL DISCREPANCIES MUST BE BROUGHT TO THE NOTICE OF THE ARCHITECT.

### LEGENDS:

#### SCHEDULE OF JOINERIES (PROPOSED)

MD-SEMI GLAZED DOOR- 6'0"X7'0"
SD- SAFE ROOM DOOR-4'0"X7'0"
D-SEMI GLAZED DOOR-3'0"X7'0"
D1-SEMI GLAZED DOOR-2'6"X7'0"
D2-SEMI GLAZED DOOR-2'6"X5'0"
D3-FLUSH DOOR-3'0"X7'0"
D4-FLUSH DOOR-2'6"X5'0"
WD-WICKET DOOR-3'0"X3'0"
SC- SIDE CREDENZA-2'6"
RS- ROLLING SHUTTER

### AREA DETAILING:

BANKING HALL = 873.00 SQ.FT
SAFE ROOM = 224.00 SQ.FT
RECORD / DINING/UPS = 365.00 SQ.FT
ATM = 106.00 SQ.FT
<b>TOTAL = 1568.00 SQ.FT</b>

### FALSE CELING:

BANKING HALL = 873.00 SQ.FT
ATM = 106.00 SQ.FT
<b>TOTAL = 979.00 SQ.FT</b>

### CARPET AREA:

**OVERALL PLINTH AREA (WITHOUT TOILET)=1568.00 SQ.FT**

TOILET AREA=40.00 SQ.FT

### TITLE:

**INTERIOR CONCEPT**



DRAWN : Er.SANKAR

SCALE : 1"=1'3"

JOB NO: I-11 - 2025

DATE :25.10.2025

SHEET SIZE: A4

### ARCHITECT

Ar. T.MAYILVAHANAN, M.E., A.I.I.A., M.C.A., P.h.d.



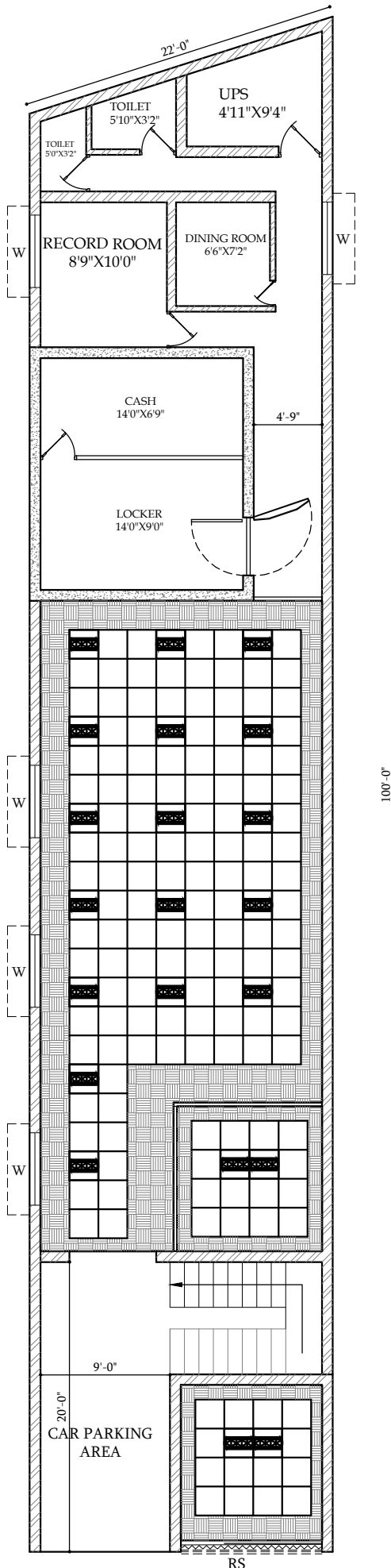
**COS CONSULTANCY SERVICES**

ARCHITECTURE, INTERIORS, STRUCTURAL  
ENGINEERS & DESIGNERS

6/13, Kamaraj Nagar 4th Street,  
Tallakulam, Madurai - 625002

Phone : 0452 - 2521869

Email id: cosquant93@gmail.com



## PROPOSED INTERIOR FURNISHING WORK FOR INDIAN BANK AT **KOLLUMEDU BRANCH** (CUDDALORE ZONE)

### NOTE

- 1) ALL DIMENSIONS ARE IN FEET & INCHES
- 2) DRAWING TO BE READ IN CONJUNCTION WITH DETAILS
- 3) ALL DISCREPANCIES MUST BE BROUGHT TO THE NOTICE OF THE ARCHITECT.

### LEGENDS:

	GYPSUM CEILING @ 4 INCH DOWN
	MINERAL FIBRE GRID CEILING @ 4INCH UP

### GYPSUM-CEILING DETAILS:

BANKING HALL	240.00 SQ.FT
BANKING HALL 4" DROP	81.00 SQ.FT
BM CABIN	36.00 SQ.FT
BM CABIN 4" DROP	24.00 SQ.FT
ATM	40.00 SQ.FT
<b>TOTAL AREA</b>	<b>421.00 SQ.FT</b>

### MINERAL FIBRE BOARD - GRIDCEILING DETAILS:

BANKING HALL	528.00 SQ.FT
BM CABIN	64.00 SQ.FT
ATM	64.00 SQ.FT
<b>TOTAL AREA</b>	<b>656.00 SQ.FT</b>

### TITLE:

**FALSE CEILING LAYOUT**



DRAWN : Er.SANKAR

SCALE : 1"=1'3"

JOB NO: I-11 - 2025

DATE :25.10.2025

SHEET SIZE: A4

### ARCHITECT

**Ar. T.MAYILVAHANAN**, M.E., A.I.I.A., M.C.A., P.hd.,



**COS CONSULTANCY SERVICES**

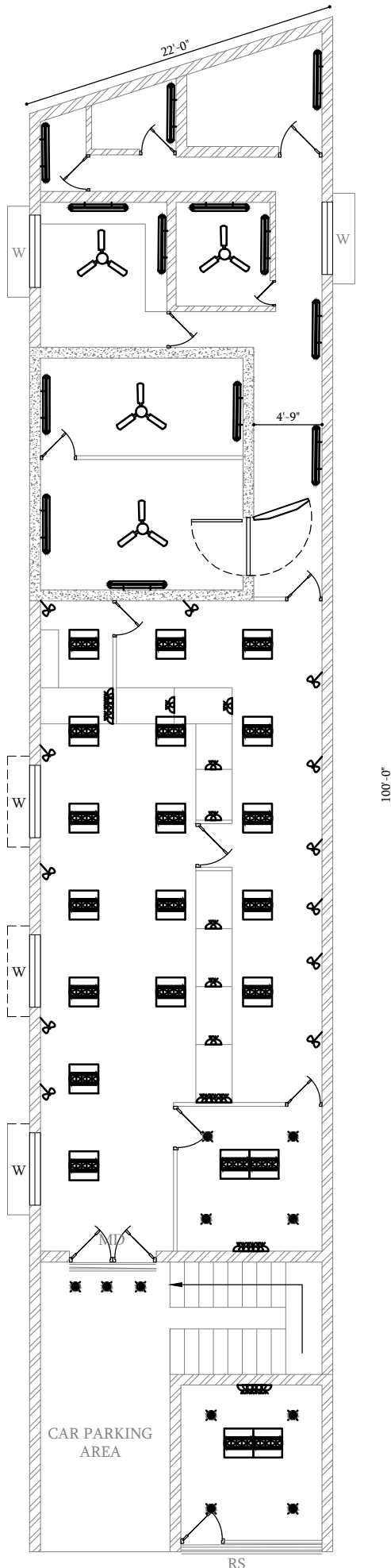
ARCHITECTURE, INTERIORS, STRUCTURAL  
ENGINEERS & DESIGNERS

6/13, Kamaraj Nagar 4th Street,

Tallakulam, Madurai - 625002

Phone : 0452 - 2521869

Email id: cosquant93@gmail.com



## PROPOSED INTERIOR FURNISHING WORK FOR INDIAN BANK AT KOLLUMEDU BRANCH (CUDDALORE ZONE)

### NOTE

- 1) ALL DIMENSIONS ARE IN FEET & INCHES
- 2) DRAWING TO BE READ IN CONJUNCTION WITH DETAILS
- 3) ALL DISCREPANCIES MUST BE BROUGHT TO THE NOTICE OF THE ARCHITECT.

### LEGENDS:

	BOX TYPE FITTING 1X36W (WALL)
	BOX TYPE FITTING 1X36W (CEILING)
	CEILING FAN
	WALL MOUNTED FAN 16\"/>
	12\"/>
	2/2 MIRROR OPTICAL
	DISTRIBUTION BOARD
	UPS DB
	MAIN PANELL
	CEILING LIGHT
	4 NOS 6A PLUG SOCKET (UPS)

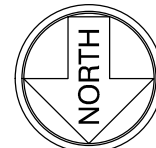
### CARPET AREA:

**OVERALL PLINTH AREA (WITHOUT TOILET)=1568.00 SQ.FT**

**TOILET AREA=40.00 SQ.FT**

### TITLE:

**ELECTRICAL LAYOUT**



DRAWN : Er.SANKAR

SCALE : 1"=1'3"

JOB NO: I-11 - 2025

DATE :25.10.2025

SHEET SIZE: A4

### ARCHITECT

Ar. T.MAYILVAHANAN, M.E., A.I.I.A., M.C.A., P.hd.,



**COS CONSULTANCY SERVICES**

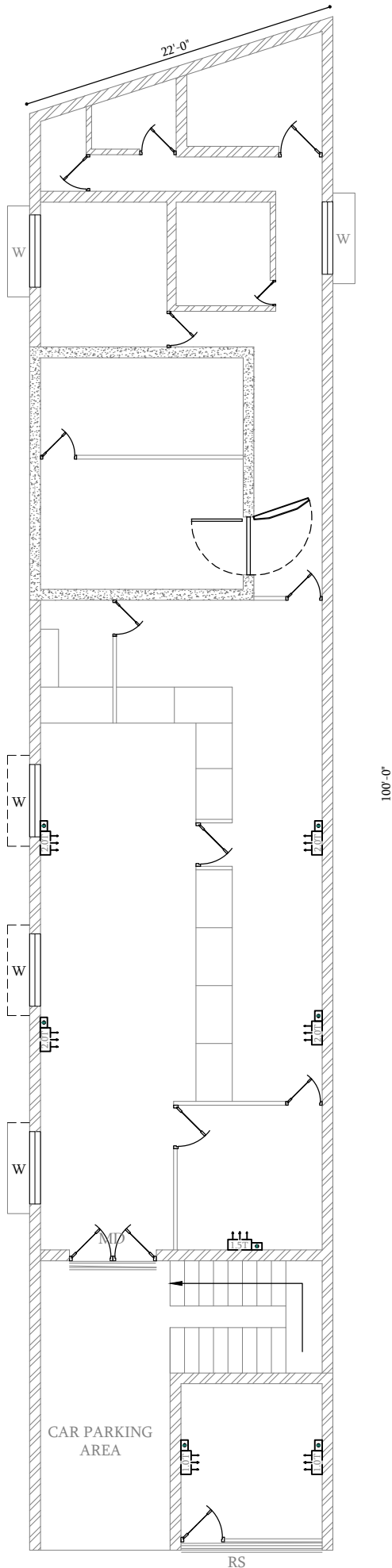
ARCHITECTURE, INTERIORS, STRUCTURAL  
ENGINEERS & DESIGNERS

6/13, Kamaraj Nagar 4th Street,

Tallakulam, Madurai - 625002

Phone : 0452 - 2521869

Email id: cosquant93@gmail.com



## PROPOSED INTERIOR FURNISHING WORK FOR INDIAN BANK AT KOLLUMEDU BRANCH (CUDDALORE ZONE)

### NOTE

- 1) ALL DIMENSIONS ARE IN FEET & INCHES
- 2) DRAWING TO BE READ IN CONJUNCTION WITH DETAILS
- 3) ALL DISCREPANCIES MUST BE BROUGHT TO THE NOTICE OF THE ARCHITECT.

### LEGENDS:

	MEGA SPLIT TYPE AC UNIT (2.0 TR) 5 STAR RATING
	MEGA SPLIT TYPE AC UNIT (1.5 TR) 5 STAR RATING
	MEGA SPLIT TYPE AC UNIT (1.0 TR) 5 STAR RATING

### CARPET AREA:

**OVERALL PLINTH AREA (WITHOUT TOILET)=1568.00 SQ.FT**

TOILET AREA=40.00 SQ.FT

### TITLE:

**AC LAYOUT**



DRAWN : Er.SANKAR

SCALE : 1"=1'3"

JOB NO: I-11 - 2025

DATE :25.10.2025

SHEET SIZE: A4

### ARCHITECT

Ar. T.MAYILVAHANAN, M.E., A.I.I.A., M.C.A., P.hd.,



**COS CONSULTANCY SERVICES**

ARCHITECTURE, INTERIORS, STRUCTURAL ENGINEERS & DESIGNERS

6/13, Kamaraj Nagar 4th Street,

Tallakulam, Madurai - 625002

Phone : 0452 - 2521869

Email id: cosquant93@gmail.com