

UP

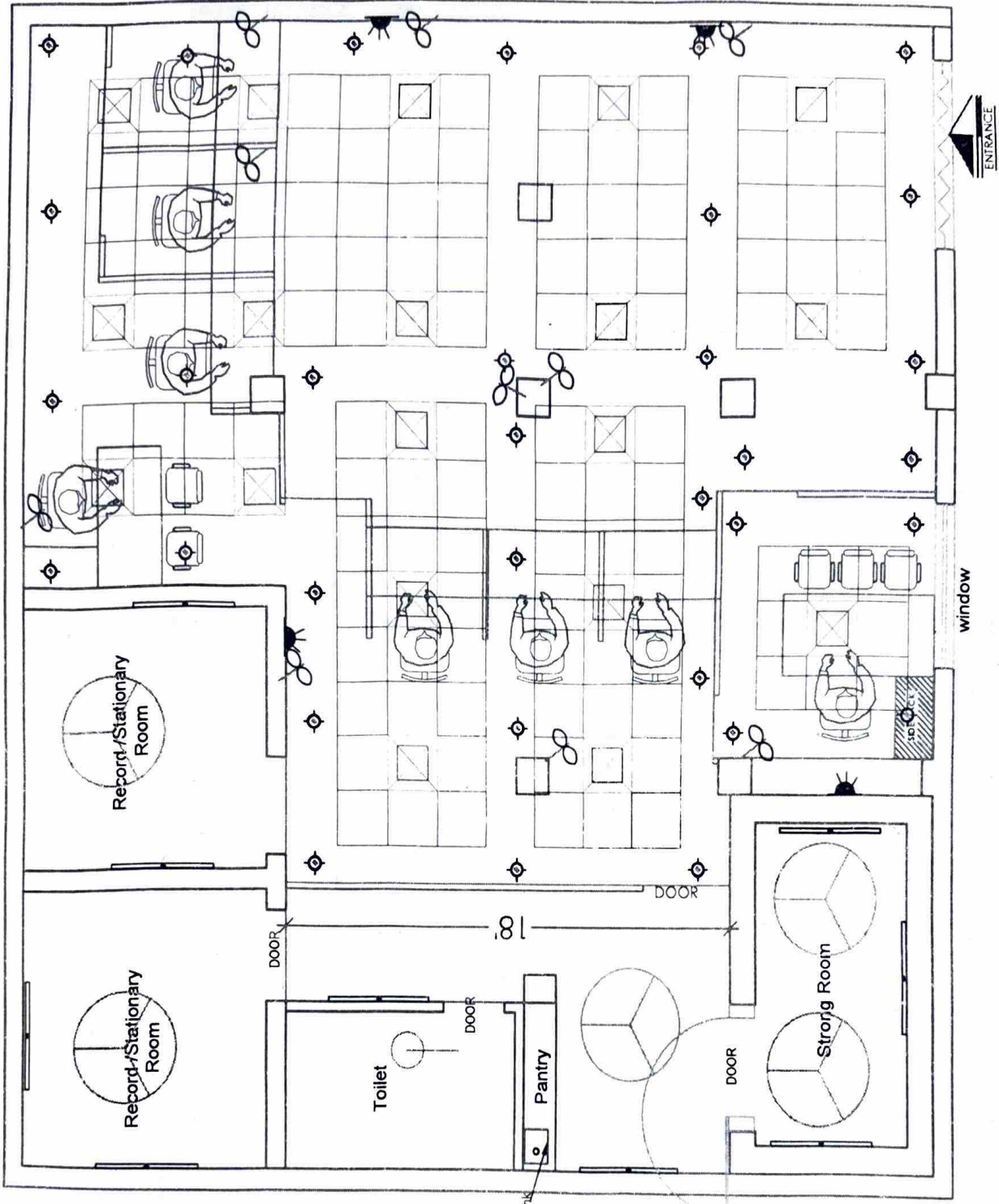
PROJECT
 MOHIT & ASSOCIATES
 ARCHITECTS INTERIORS & FURNITURE
 I-2/354 VINHEET KHAND, GOMTI NAGAR,
 LUCKNOW, MO. - 988218992, 7428217639

SCALE N.T.S.
 DATE
 OCT 2024



DRAWING
 LAYOUT

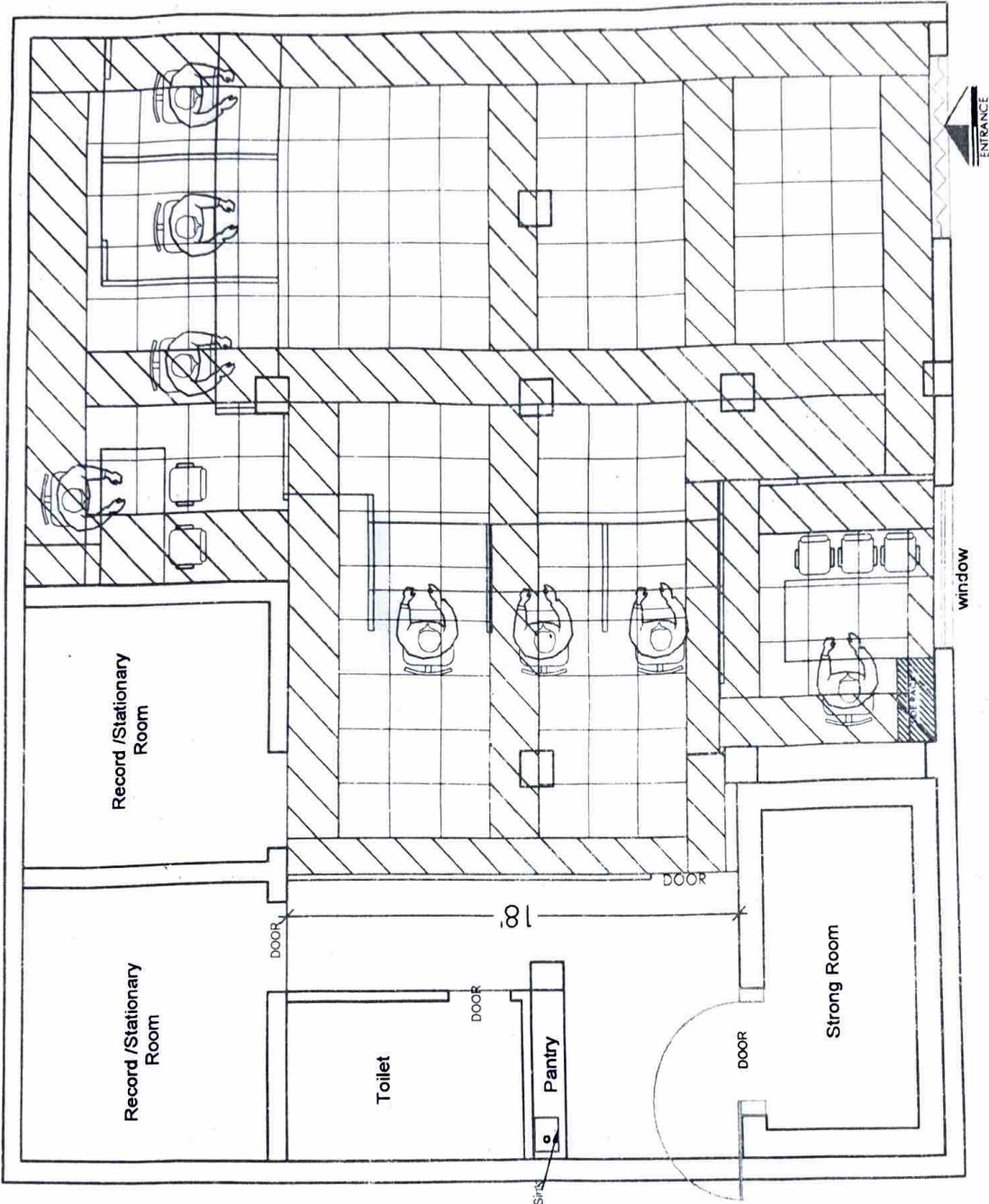
PROPOSED FURNISHING LAYOUT OF INDIAN BANK BRANCH AT MAWAI



LEGENDS FOR FALSE CEILING BRANCH

S.NO.	SYMBOL	DESCRIPTION	HT.
1.	⊠	2x36w CFL RECESS LIGHT	7'-0"
2.	—	1x36V TUBE LIGHT	7'-0"
3.	—	2x36V TUBE LIGHT RECESS	
4.	⊙	CEILING FAN	
5.	—	2x36V TUBE LIGHT HOUSING	8'-0"
6.	—	WALL MOUNTED FAN	6'-6"
7.	∞	EXHAUST	8'-6"
8.	⊙	1x11V CFL WALL LIGHT	8'-6"
9.	—	SWITCH BOARD	4'-6"
10.	—	POWER POINT	1'-0"
11.	—	A.C-POINT PROPOSED AT MAIN LT INCORPORATING PANEL	1'-0"
12.	—	TPN DB	6'-0"

UP



ARCHITECT
NOHIT & ASSOCIATES
 ARCHITECTS, INTERIORS, ESTIMATORS
 L-2/554 VINEET KHAND, GOMTI NAGAR,
 LUCKNOW, M.O. - 982218092, 7428217659

SCALE N.T.S.
 DATE
 OCT 2024



DRAWING
CEILING LAYOUT

PROJECT
 PROPOSED FURNISHING LAYOUT OF INDIAN BANK BRANCH AT MAWAI

proposed furniture layout