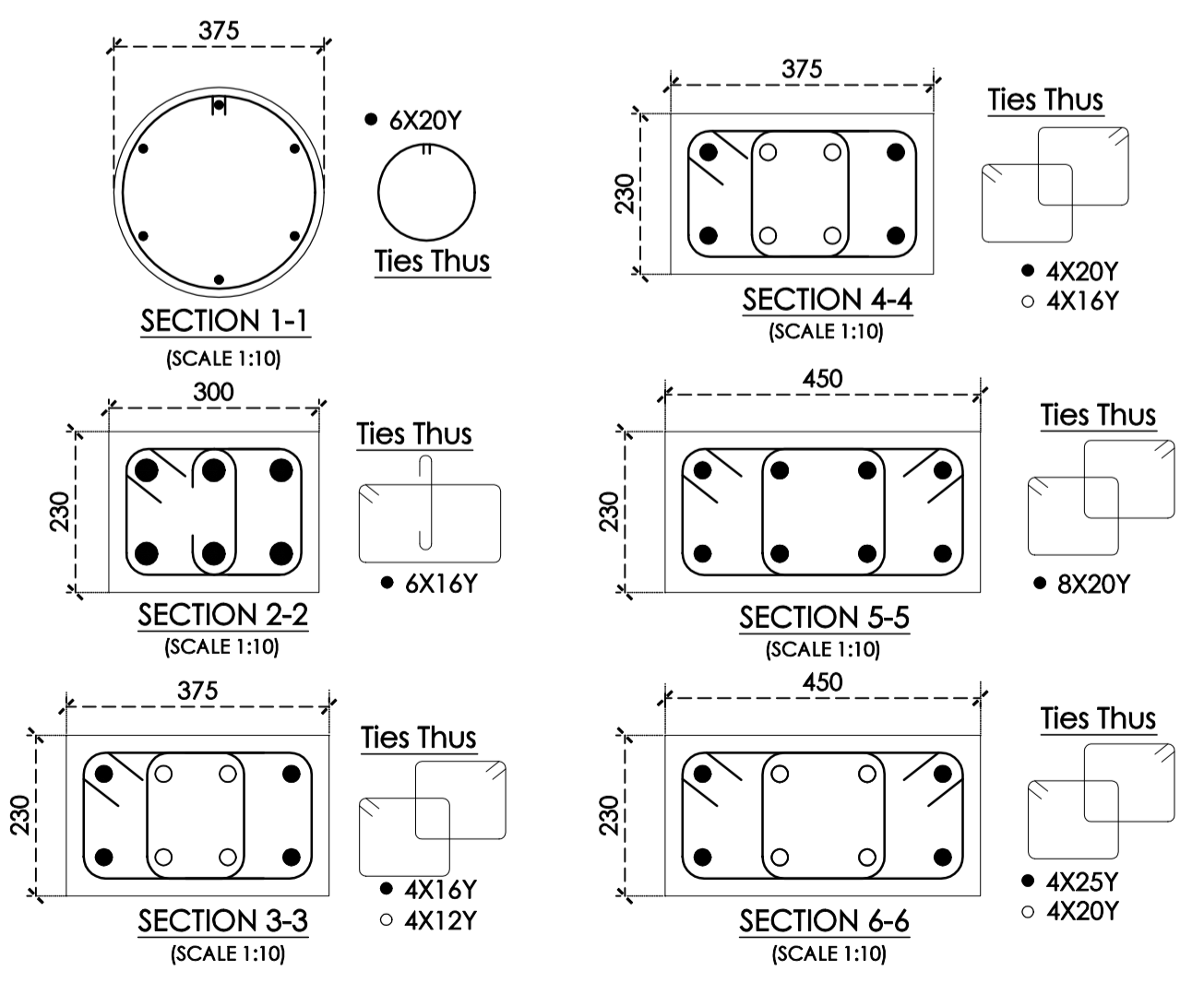
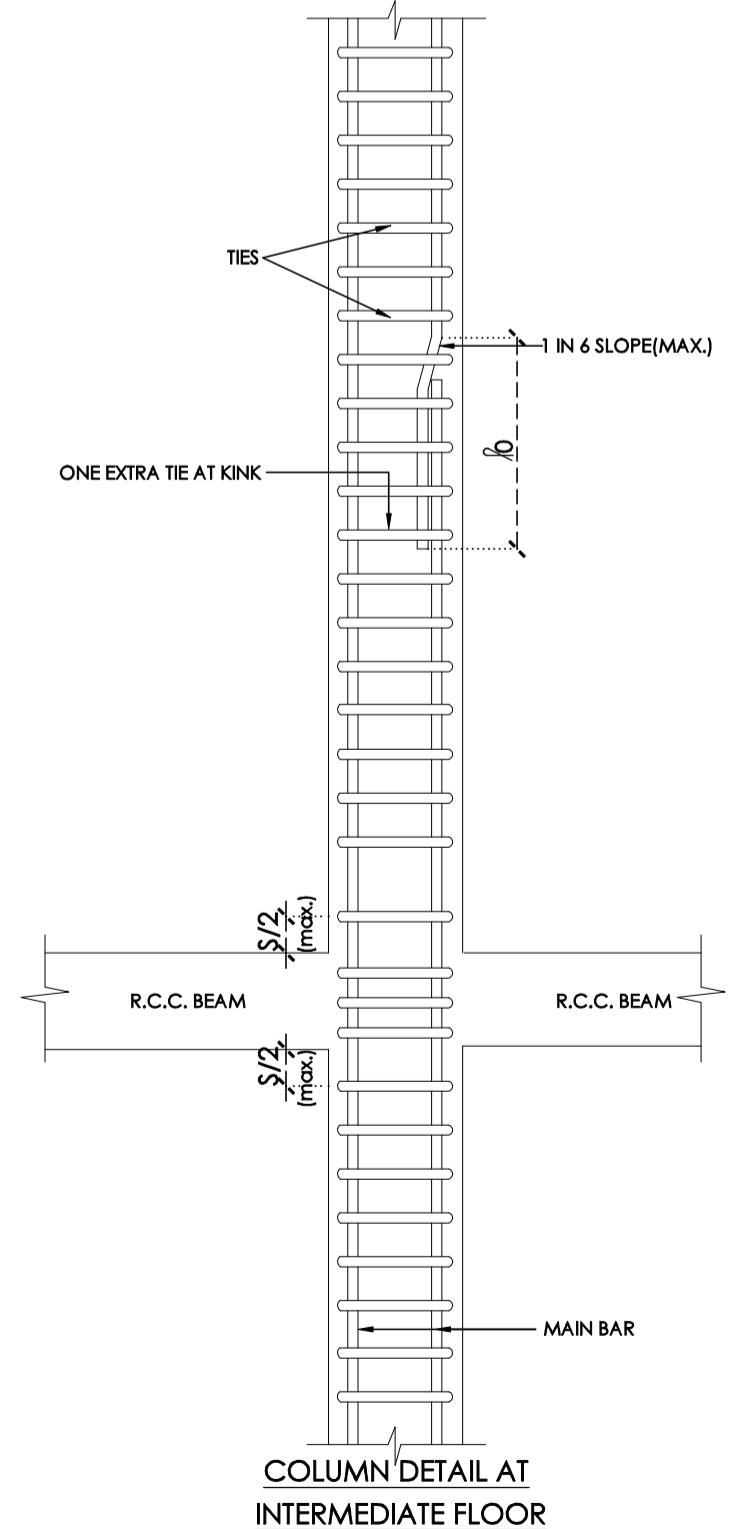
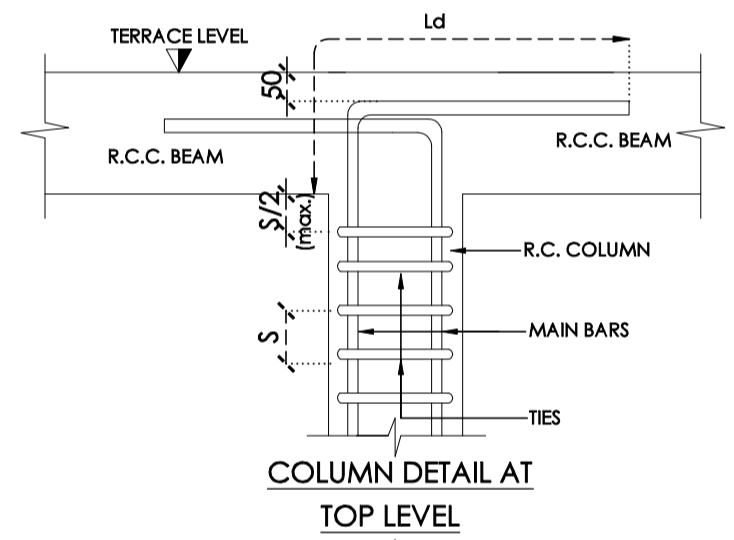
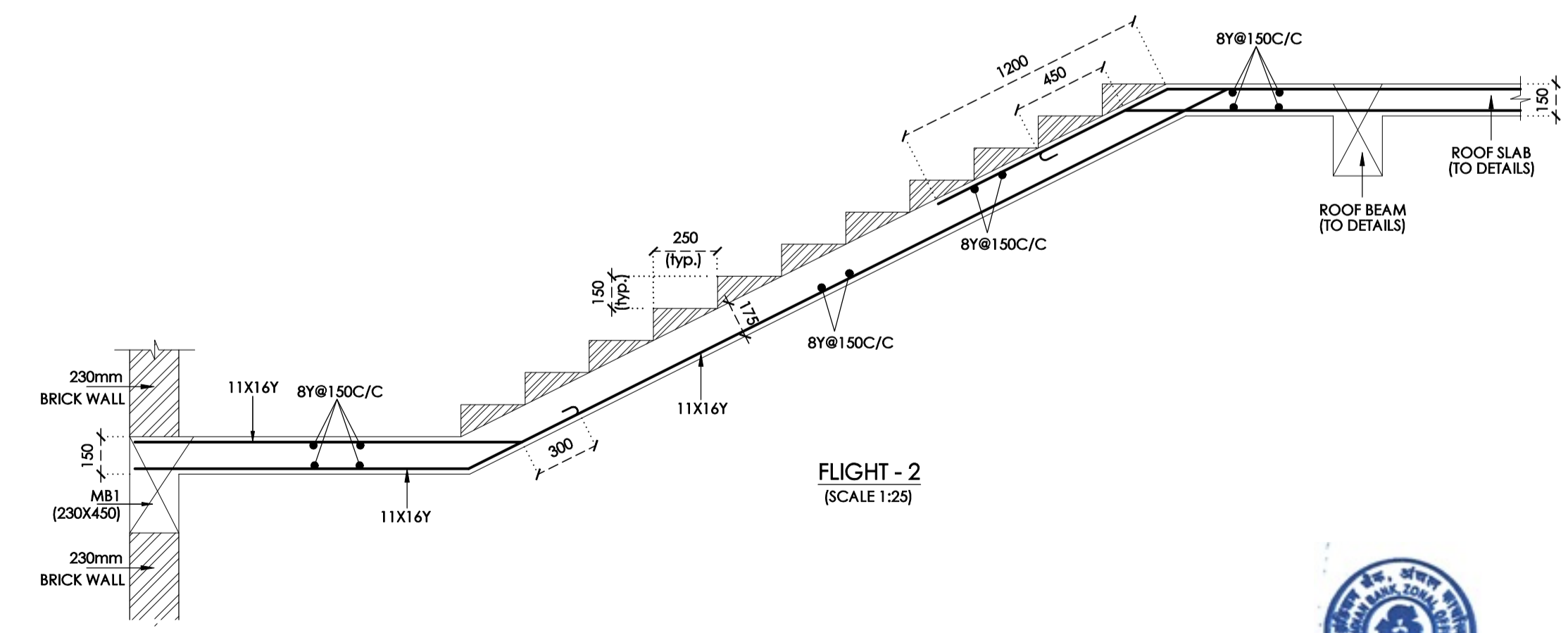
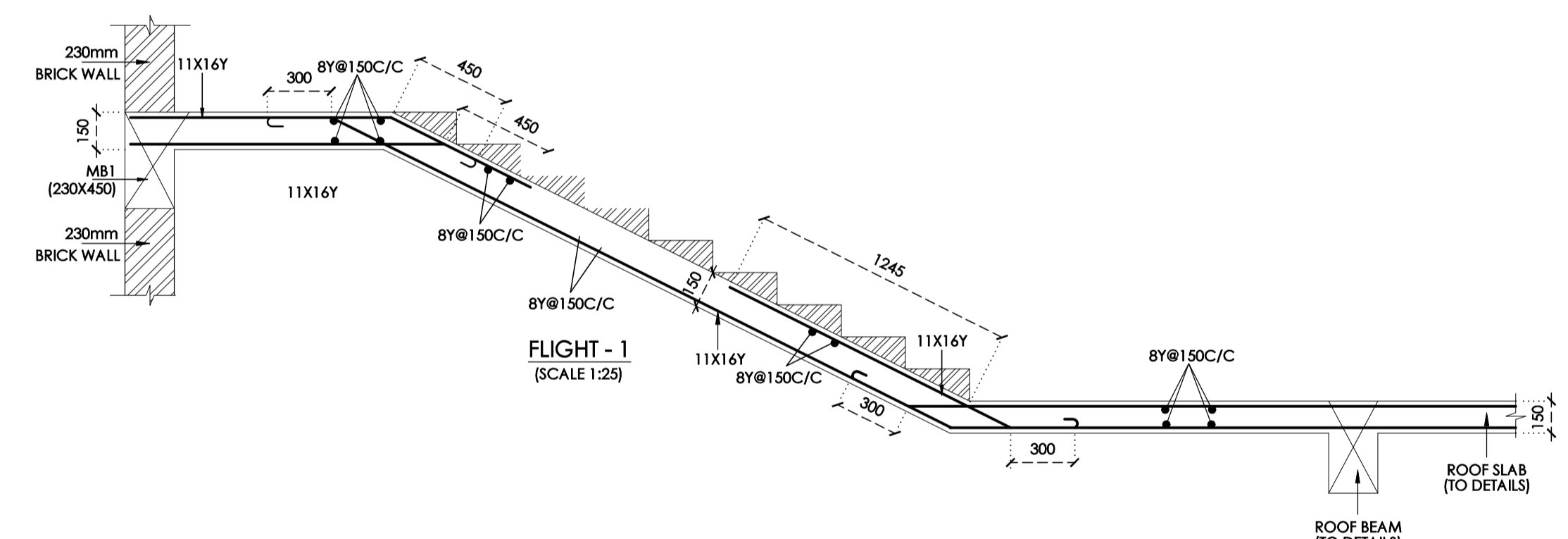


COLUMN LAYOUT
(SCALE 1:100)

SCHEDULE OF COLUMNS:

COLUMN MARK	COLUMN SIZE	REINFORCEMENT		TOTAL NOS.
		MAIN	TIE	
C1	375Ø	6X20Y	8Y@150C/C	2
C2	230 X 300	6X16Y	8Y@150C/C	10
C3	230 X 375	4X16Y+4X12Y	8Y@150C/C	8
C4	230 X 375	4X20Y+4X16Y	8Y@150C/C	5
C5	230 X 450	8X20Y	8Y@150C/C	13
C6	230 X 450	4X25Y+4X20Y	8Y@150C/C	14



- * "Y" denotes deformed bars.
- * Clear cover for reinforcements shall be.
 - i) For Footings 50mm to all reinforcement.
 - ii) For Columns 40mm to all reinforcement.
 - iii) For Beams 25mm to all reinforcement.
- * Minimum lap length shall be 50xDiameter of the main bar for all R.C.C. works.
- * Use M25 grade concrete and Fe 500 grade steel for all R.C.C. works.
- * This Building is designed for G +2 floors
- * S.B.C. considered is 250kN/m² for Isolated Footing

OWNER	REGISTERED ENGINEER	
REV. DATE	DESCRIPTION	DWN. APP.
REVISIONS		
REFERENCES:		

PROPOSED CONSTRUCTION OF TRAINING CENTRE FOR INDSETI AT VILLUPURAM
COLUMN LAYOUT AND DETAILS
STAIRCASE SECTION

STRUCTURAL TENDER DRAWING

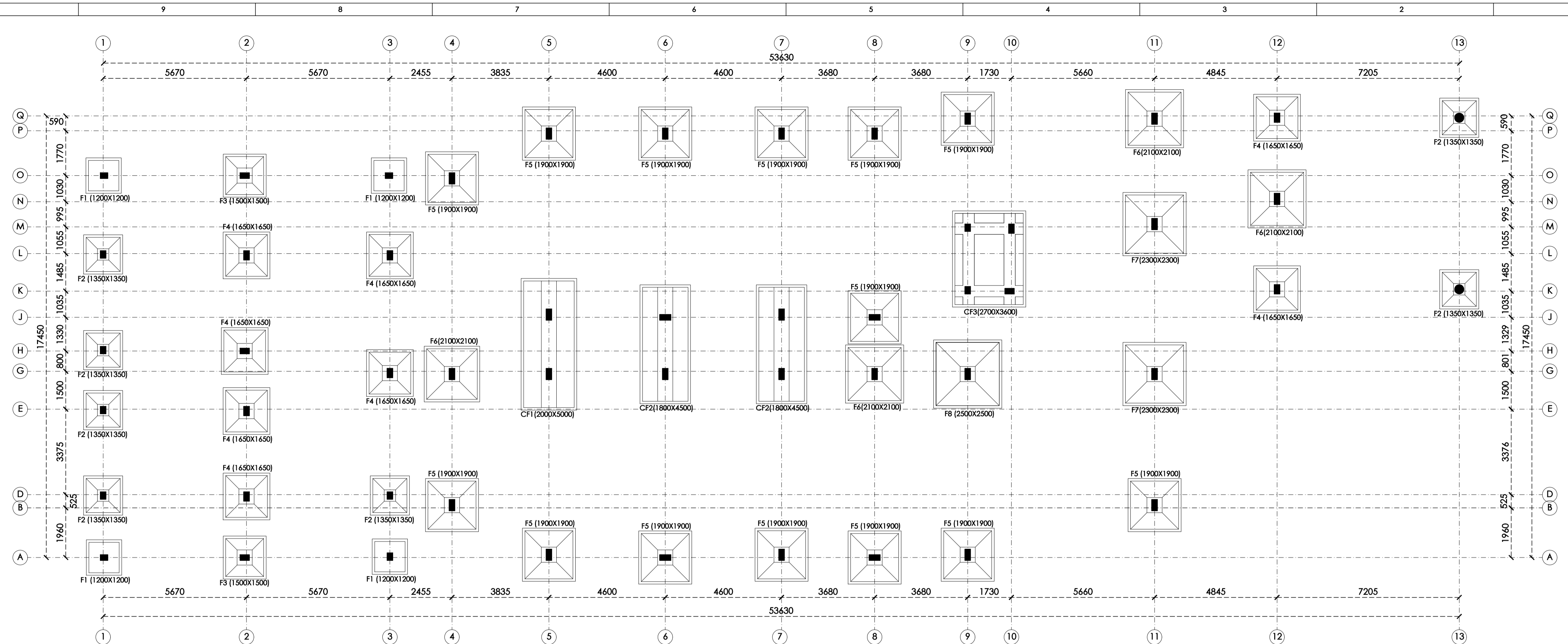
Department	STRUCTURE
Drawn	R.Ganesh
Dealt	R.Ganesh
Checked	R.Ganesh
Date	17.03.2026

Sheet size **A 2**

Structural Consultant:



Er.R.GANESH,M.Tech.
Mobile : 9789455270
email: ganeshramu1987@gmail.com



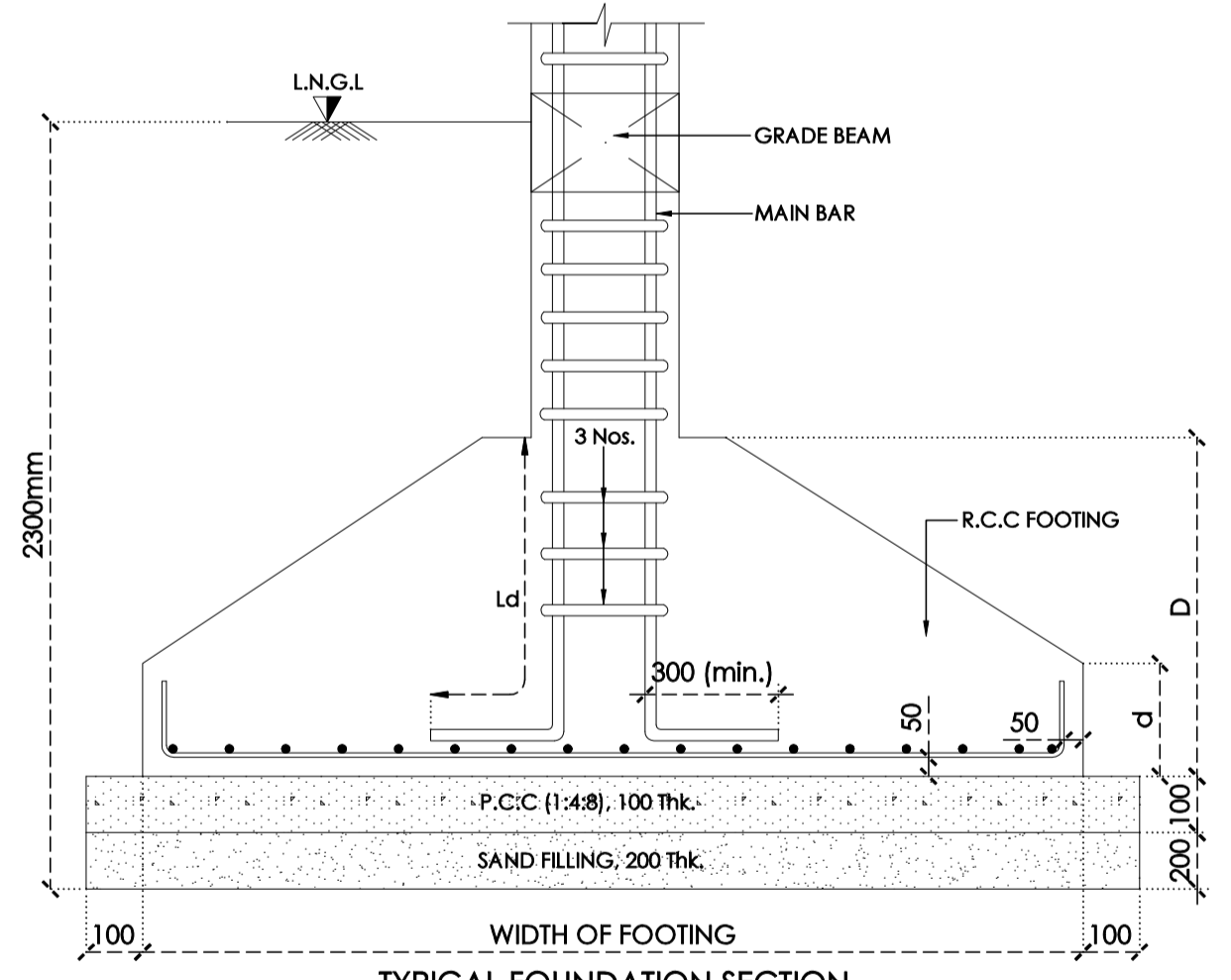
FOOTING LAYOUT
(SCALE 1:100)

SCHEDULE OF FOOTINGS:

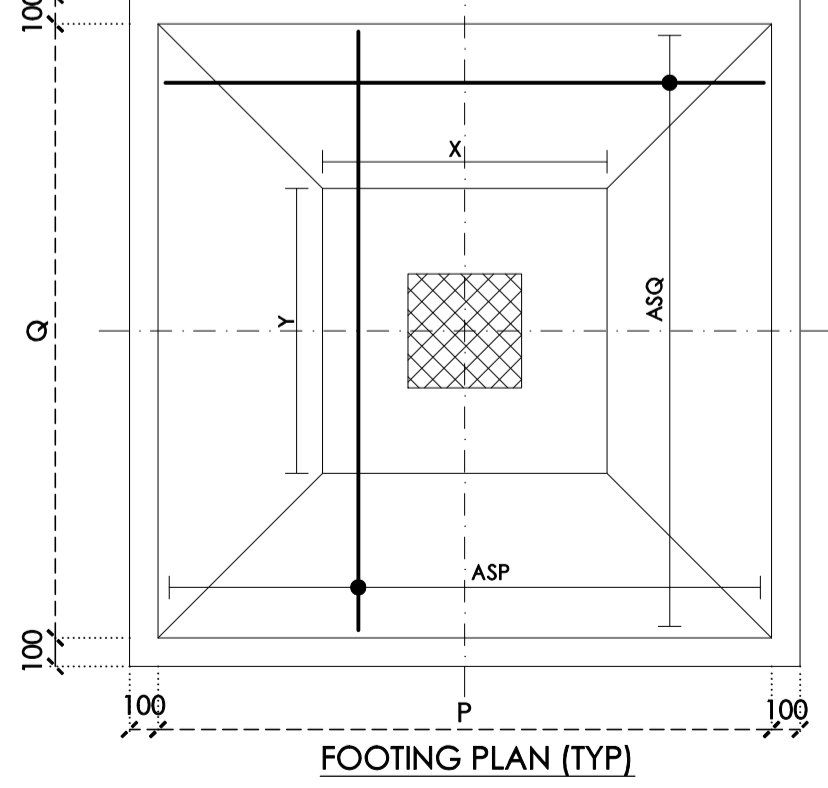
FOOTING MARK	FOOTING SIZE	LEDGE		DEPTH		ASP	ASQ	TOTAL NOS.
		X	Y	(D)	(d)			
F1	1200 X 1200	450	450	450	250	9X10Y	9X10Y	4
F2	1350 X 1350	450	450	450	250	10X10Y	10X10Y	7
F3	1500 X 1500	600	600	450	250	11X12Y	11X12Y	2
F4	1650 X 1650	600	600	450	250	12X12Y	12X12Y	8
F5	1900 X 1900	600	600	600	300	16X12Y	16X12Y	14
F6	2100 X 2100	600	600	750	350	17X12Y	17X12Y	4
F7	2300 X 2300	600	600	900	450	19X12Y	19X12Y	2
F8	2500 X 2500	600	600	1000	500	21X12Y	21X12Y	1

SCHEDULE OF STRIP FOOTING:

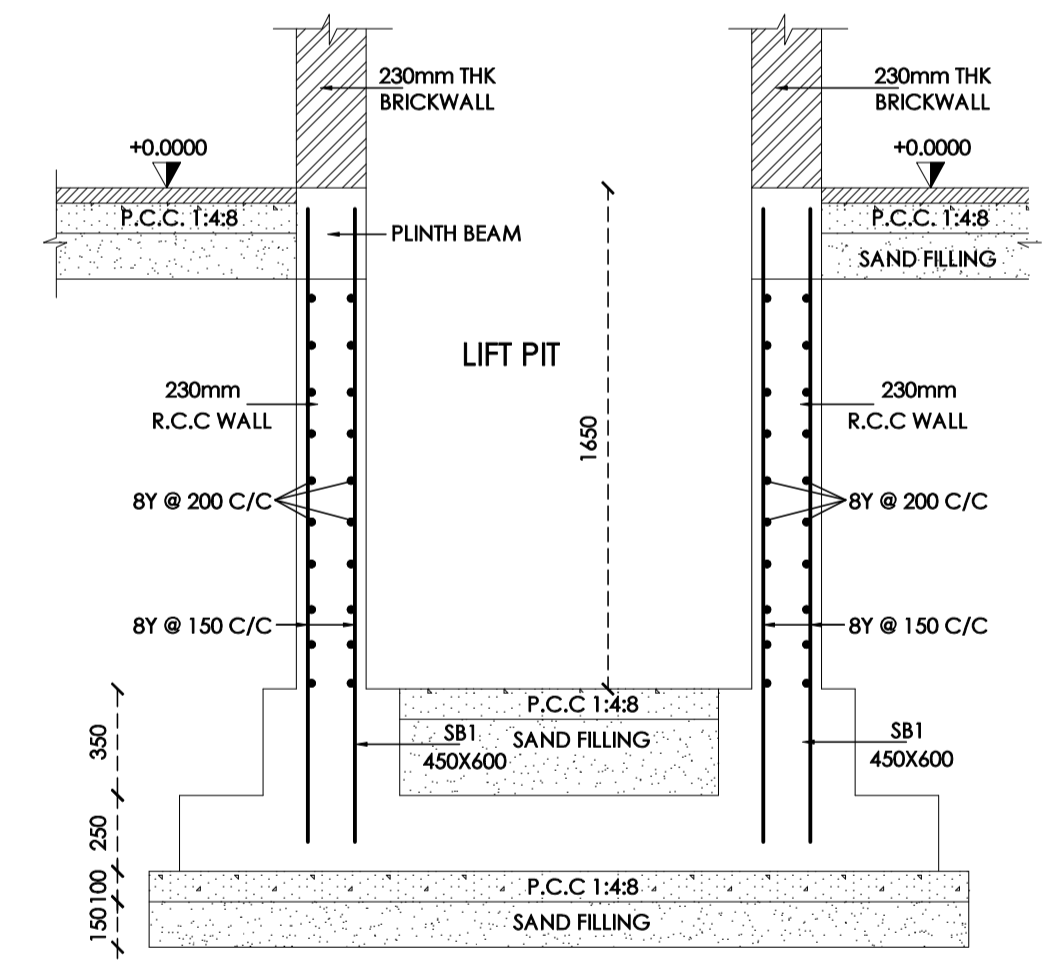
FOOTING MARK	SIZE	STRIP BEAM REINFORCEMENT			SLAB REINFORCEMENT			FOOTING SIZE	TOTAL NOS.
		BOTTOM BAR	TOP BAR	STIRRUPS	DEPTH	MAIN	TIE		
CF1	450 X 600	4X20Y+2X16Y	4X20Y+2X16Y	4-8Y@110C/C	250	12Y@150C/C	10Y@150C/C	2000X5000	1
CF2	450 X 600	4X20Y+2X16Y	4X20Y+2X16Y	4-8Y@110C/C	250	12Y@150C/C	10Y@150C/C	1800X4500	2
CF3	450 X 600	4X20Y+2X16Y	4X20Y+2X16Y	4-8Y@110C/C	250	12Y@150C/C	10Y@150C/C	2700X3600	1
	450 X 600	4X20Y	4X20Y	4-8Y@150C/C	250	12Y@150C/C	10Y@150C/C	2700X3600	



TYPICAL FOUNDATION SECTION



FOOTING PLAN (TYP)



SECTION X-X
(SCALE 1:25)

- * "Y" denotes deformed bars.
- * Clear cover for reinforcements shall be:
 - For Footings 50mm to all reinforcement.
 - For Columns 40mm to all reinforcement.
 - For Beams 25mm to all reinforcement.
- * Minimum lap length shall be 50xDiameter of the main bar for all R.C.C. works.
- * Use M25 grade concrete and Fe 500 grade steel for all R.C.C. works.
- * This Building is designed for G +2 floors
- * S.B.C. considered is 250kN/m² for Isolated Footing

OWNER	REGISTERED ENGINEER	
REV. DATE	DESCRIPTION	DWN. APP.
REVISIONS		
REFERENCES:		

PROPOSED CONSTRUCTION OF
TRAINING CENTRE FOR INDSETI
AT VILLUPURAM

FOOTING LAYOUT AND DETAILS
LIFT PIT LAYOUT & SECTION
STRUCTURAL TENDER DRAWING

Department	STRUCTURE
Drawn	V.Sangavathi
Dealt	R.Ganesh
Checked	R.Ganesh
Date	17.03.2026

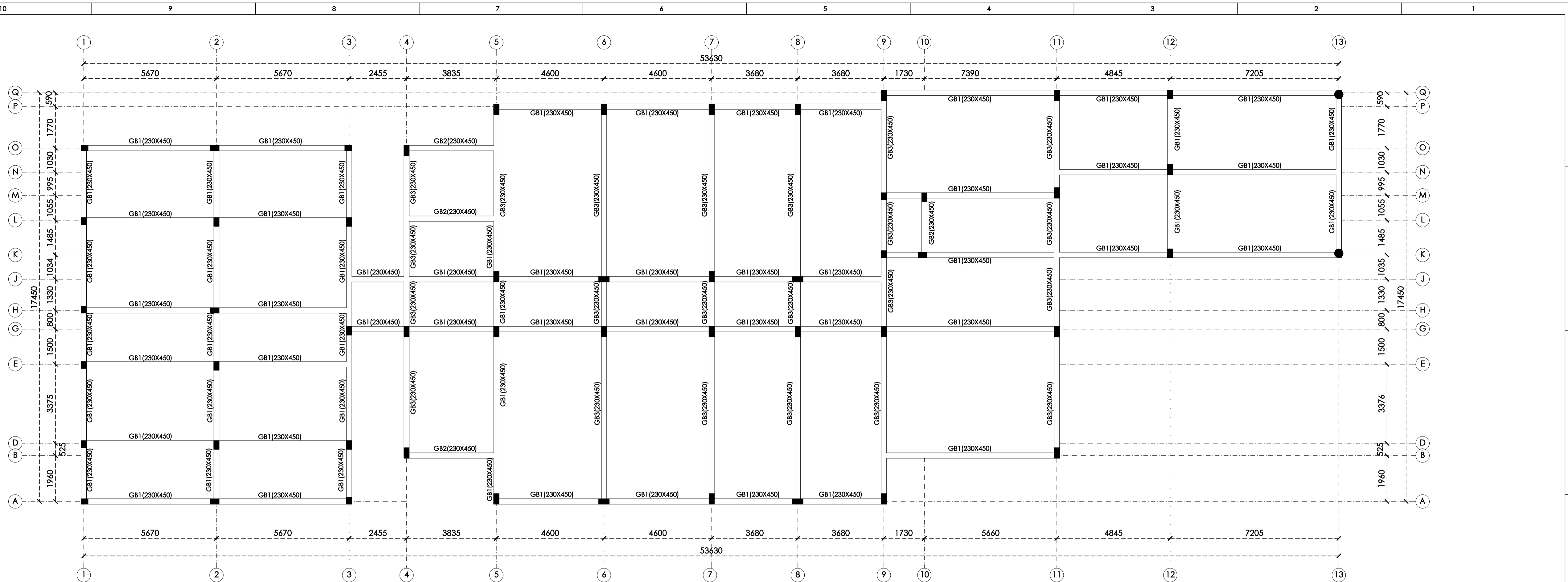
Sheet size A 2

Structural Consultant:

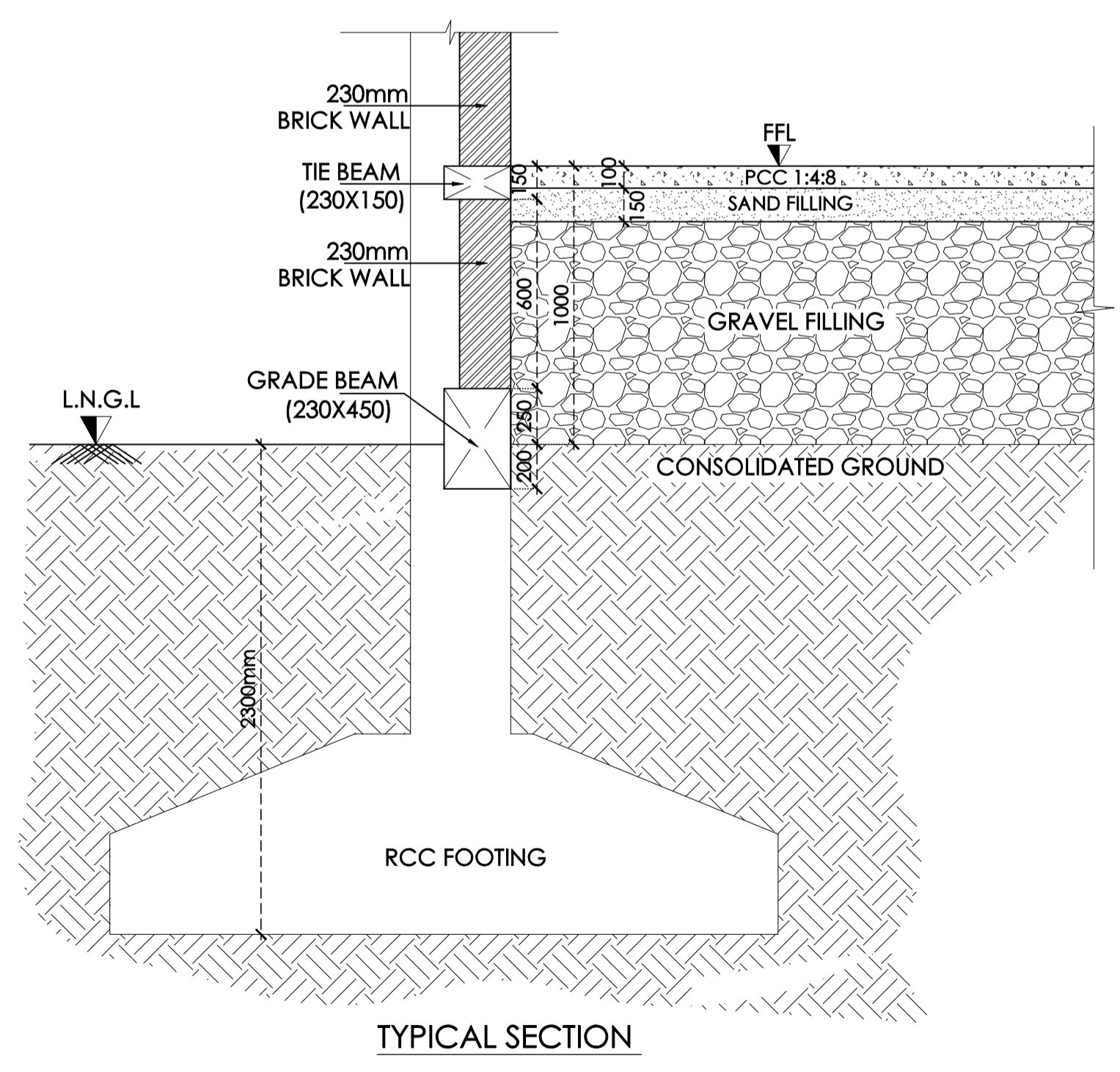
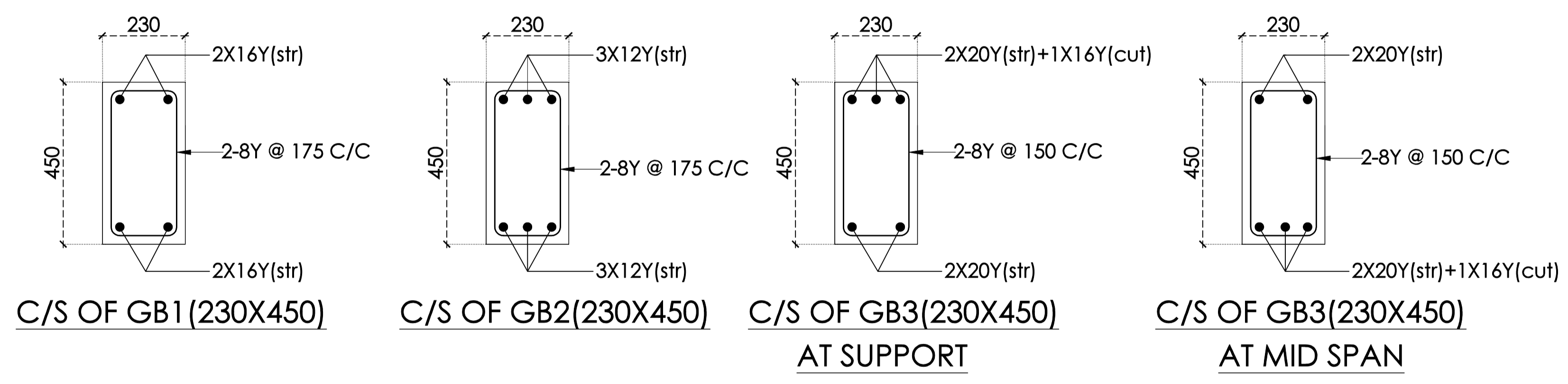


Er.R.GANESH,M.Tech.
Mobile : 9789455270
email: ganeshramu1987@gmail.com

SCALE 1:100



C/S OF GRADE BEAM DETAILS



- * "Y" denotes deformed bars.
- * Clear cover for reinforcements shall be,
 - i) For Footings 50mm to all reinforcement.
 - ii) For Columns 40mm to all reinforcement.
 - iii) For Beams 25mm to all reinforcement.
- * Minimum lap length shall be 50xDiameter of the main bar for all R.C.C. works.
- * Use M25 grade concrete and Fe 500 grade steel for all R.C.C. works.
- * This Building is designed for G +2 floors
- * S.B.C. considered is 250kN/m² for Isolated Footing

OWNER	REGISTERED ENGINEER	
REV. DATE	DESCRIPTION	DWN. APP.
	REVISIONS	

REFERENCES:

PROPOSED CONSTRUCTION OF TRAINING CENTRE FOR INDSETI AT VILLUPURAM

GRADE BEAM LAYOUT AND DETAILS

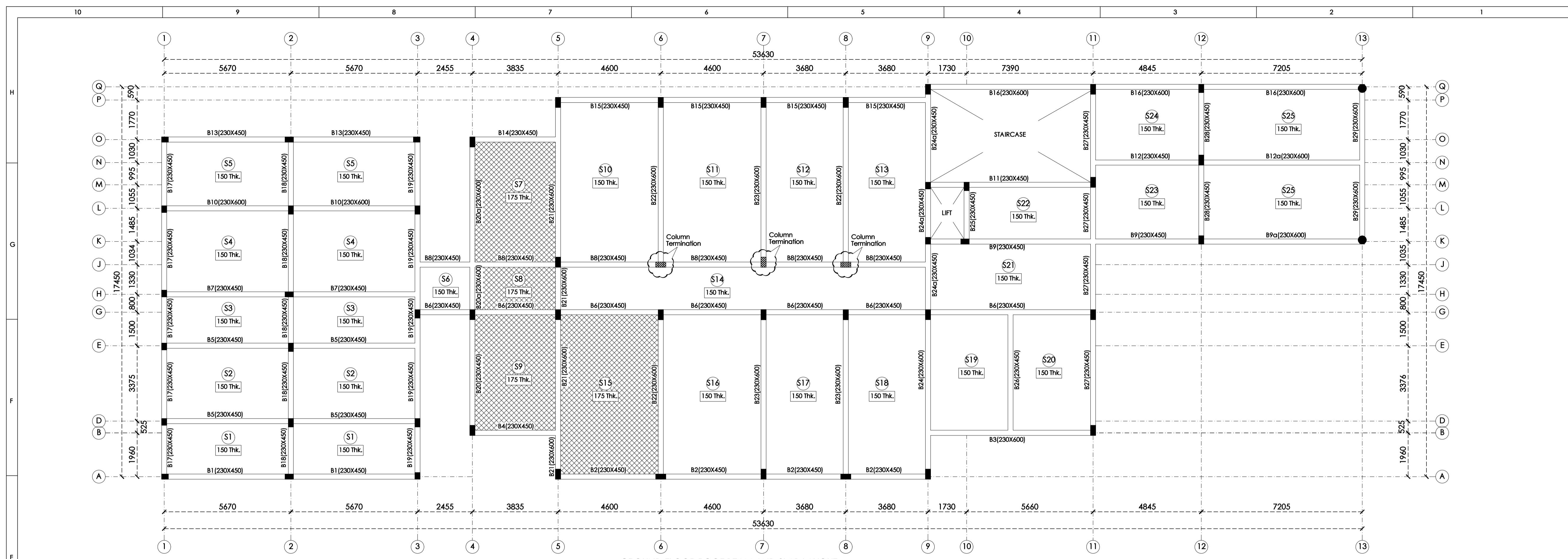
STRUCTURAL TENDER DRAWING	
Department	STRUCTURE
Drawn	V.Sangavathi
Dealt	R.Ganesh
Checked	R.Ganesh
Date	17.03.2026
Sheet size	A 2

Structural Consultant:



Er.R.GANESH, M.Tech.
 Mobile : 9789455270
 email: ganeshramu1987@gmail.com





GROUND FLOOR ROOF BEAM AND SLAB LAYOUT
(SCALE 1:100)

GROUND FLOOR ROOF BEAM REINFORCEMENT DETAILS

BEAM MARK	SIZE		TOP REINFORCEMENT			BOTTOM REINFORCEMENT			SHEAR STIRRUPS
	B	D	LEFT	MID SPAN	RIGHT	LEFT	MID SPAN	RIGHT	
B1	230	450	3X16Y	2X16Y	3X16Y	2X16Y	3X16Y	2X16Y	2L-8Y @ 150C/C
B2	230	450	2X16Y	2X16Y	4X16Y	2X16Y	3X16Y	2X16Y	2L-8Y @ 150C/C
B3	230	600	5X20Y	3X20Y	5X20Y	3X20Y	5X20Y	3X20Y	2L-8Y @ 150C/C
B4	230	450	2X16Y	2X16Y	2X16Y	2X16Y	2X16Y	2X16Y	2L-8Y @ 150C/C
B5	230	450	2X20Y	2X20Y	2X20Y	2X20Y	2X20Y	2X20Y	2L-8Y @ 150C/C
B6	230	450	3X16Y	3X16Y	3X16Y	3X16Y	3X16Y	3X16Y	2L-8Y @ 150C/C
B7	230	450	3X16Y	3X16Y	3X16Y	3X16Y	3X16Y	3X16Y	2L-8Y @ 150C/C
B8	230	450	3X16Y	3X16Y	3X16Y	3X16Y	3X16Y	3X16Y	2L-10Y @ 150C/C
B9	230	450	3X16Y	3X16Y	3X16Y	3X16Y	3X16Y	3X16Y	2L-8Y @ 150C/C
B9a	230	600	5X20Y	3X20Y	5X20Y	3X20Y	5X20Y	3X20Y	2L-8Y @ 150C/C
B10	230	450	3X16Y	3X16Y	3X16Y	3X16Y	3X16Y	3X16Y	2L-8Y @ 150C/C
B11	230	450	3X16Y	3X16Y	3X16Y	3X16Y	3X16Y	3X16Y	2L-8Y @ 150C/C
B12	230	450	3X16Y	3X16Y	3X16Y	3X16Y	3X16Y	3X16Y	2L-8Y @ 150C/C
B12a/B13	230	600	5X20Y	3X20Y	5X20Y	3X20Y	5X20Y	3X20Y	2L-10Y @ 150C/C
B14	230	450	5X20Y	3X20Y	5X20Y	3X20Y	5X20Y	3X20Y	2L-10Y @ 150C/C
B15	230	450	3X16Y	3X16Y	3X16Y	3X16Y	3X16Y	3X16Y	2L-8Y @ 150C/C
B16	230	600	5X20Y	3X20Y	5X20Y	3X20Y	5X20Y	3X20Y	2L-8Y @ 150C/C
B17	230	450	5X20Y	3X20Y	5X20Y	3X20Y	5X20Y	3X20Y	2L-10Y @ 150C/C
B18	230	450	3X16Y	3X16Y	3X16Y	3X16Y	3X16Y	3X16Y	2L-8Y @ 150C/C
B19	230	450	5X20Y	3X20Y	5X20Y	3X20Y	5X20Y	3X20Y	2L-10Y @ 150C/C
B20	230	450	5X20Y	3X20Y	5X20Y	3X20Y	5X20Y	3X20Y	2L-8Y @ 150C/C
B20a	230	600	5X20Y	3X20Y	5X20Y	3X20Y	5X20Y	3X20Y	2L-8Y @ 150C/C
B21	230	600	4X25Y	2X25Y	4X25Y	2X25Y	4X25Y	2X25Y	2L-10Y @ 150C/C
B22	230	600	4X25Y	2X25Y	4X25Y	2X25Y	4X25Y	2X25Y	2L-8Y @ 150C/C

GROUND FLOOR ROOF BEAM REINFORCEMENT DETAILS

BEAM MARK	SIZE		TOP REINFORCEMENT			BOTTOM REINFORCEMENT			SHEAR STIRRUPS
	B	D	LEFT	MID SPAN	RIGHT	LEFT	MID SPAN	RIGHT	
B23	230	600	4X25Y	2X25Y	4X25Y	2X25Y	4X25Y	2X25Y	2L-8Y @ 150C/C
B24	230	600	5X20Y	3X20Y	5X20Y	3X20Y	5X20Y	3X20Y	2L-8Y @ 150C/C
B24a	230	450	2X20Y	2X20Y	2X20Y	2X20Y	2X20Y	2X20Y	2L-8Y @ 150C/C
B25	230	450	2X12Y	2X12Y	2X12Y	2X12Y	2X12Y	2X12Y	2L-8Y @ 150C/C
B26	230	450	2X16Y	2X16Y	2X16Y	2X16Y	2X16Y	2X16Y	2L-8Y @ 150C/C
B27a	230	450	3X20Y	2X20Y	3X20Y	2X20Y	3X20Y	2X20Y	2L-8Y @ 150C/C
B28	230	450	2X16Y	2X16Y	2X16Y	2X16Y	2X16Y	2X16Y	2L-8Y @ 150C/C
B29	230	600	4X20Y	2X20Y	4X20Y	2X20Y	4X20Y	2X20Y	2L-8Y @ 150C/C

GROUND FLOOR ROOF SLAB REINFORCEMENT DETAILS

SL.NO	SLAB NAMES	THK	TYPE	BOTTOM REINFORCEMENT		TOP REINFORCEMENT		DISTRIBUTION	REMARKS
				SHORT SPAN (BENT UP)	LONG SPAN (BENT UP)	SHORT SPAN (BENT UP)	LONG SPAN (BENT UP)		
				1	S1, S2, S3, S4, S5, S12	150	2-Way		
2	S6, S19, S20, S22, S23, S24, S25	150	2-Way	12Y@150C/C	12Y@150C/C	12Y@150C/C	12Y@150C/C	10Y@150C/C	-
3	S14, S21	150	1-Way	8Y@150C/C	8Y@150C/C	8Y@150C/C	8Y@150C/C	8Y@175C/C	-
4	S10, S11, S12, B13, B16, B17, B18	150	2-Way	12Y@150C/C	10Y@150C/C	12Y@150C/C	10Y@150C/C	8Y@175C/C	-
5	S7, S8, S9, S15	175	1-Way	8Y@150C/C	8Y@150C/C	8Y@150C/C	8Y@150C/C	8Y@150C/C	SUNKEN BY 425 mm

- * "Y" denotes deformed bars.
- * Clear cover for reinforcements shall be.
 - i) For Columns 40mm to all reinforcement.
 - ii) For Beams 25mm to all reinforcement.
 - iii) For Slabs 20mm to all reinforcement.
- * Minimum lap length shall be 50xDiameter of the main bar for all R.C.C. works.
- * Use M25 grade concrete and Fe 500 grade steel for all R.C.C. works.
- * This Building is designed for G +2 floors

OWNER	REGISTERED ENGINEER	
REV. DATE	DESCRIPTION	DWN. APP.
REVISIONS		
REFERENCES:		

PROPOSED CONSTRUCTION OF
TRAINING CENTRE FOR INDSETI
AT VILLUPURAM

GROUND FLOOR ROOF BEAM
AND SLAB LAYOUT & DETAILS

STRUCTURAL TENDER DRAWING

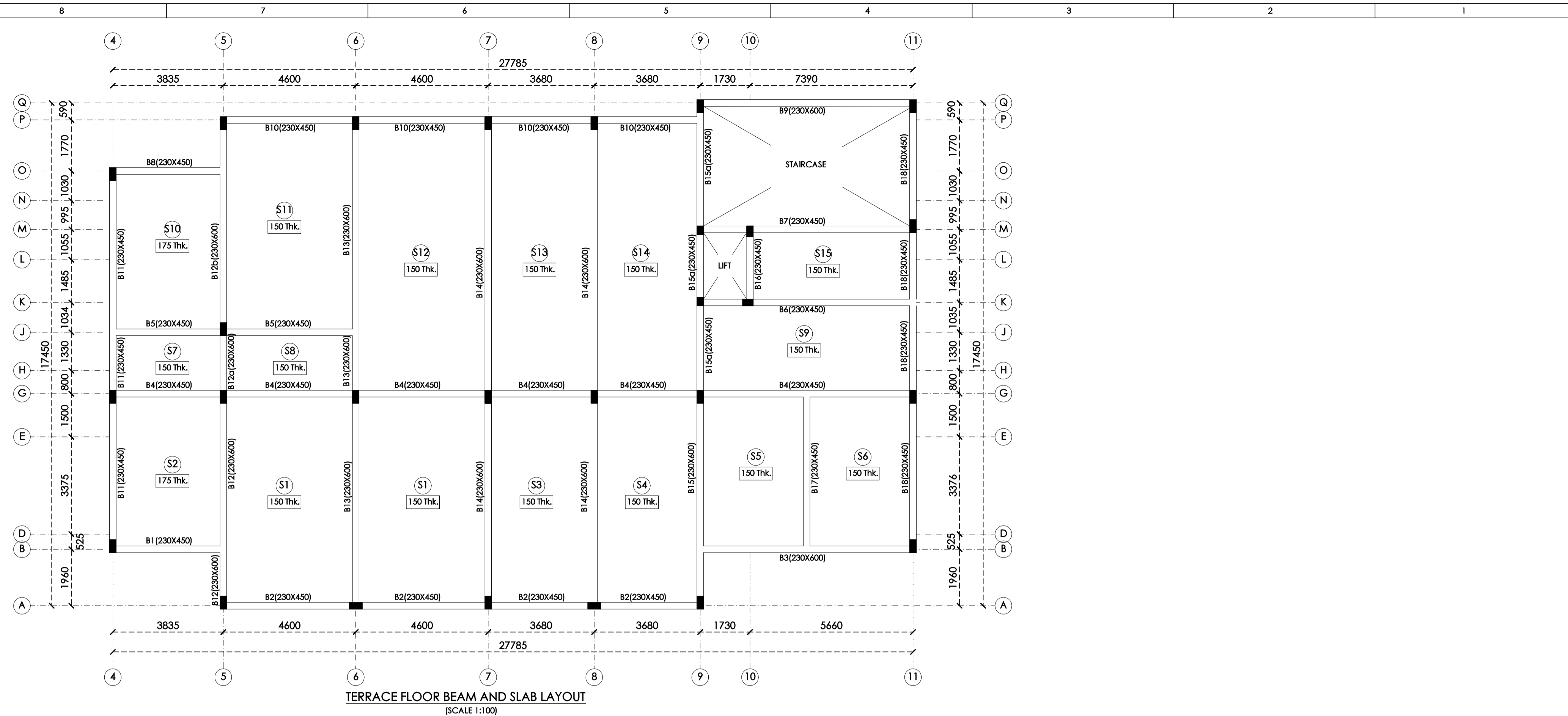
Department	STRUCTURE
Drawn	V.Sangavathi
Dealt	R.Ganesh
Checked	R.Ganesh
Date	17.03.2026

Sheet size A 2

Structural Consultant:



Er.R.GANESH,M.Tech.
Mobile : 9789455270
email: ganeshramu1987@gmail.com



TERRACE FLOOR BEAM AND SLAB LAYOUT
(SCALE 1:100)

TERRACE FLOOR BEAM REINFORCEMENT DETAILS

BEAM MARK	SIZE		TOP REINFORCEMENT			BOTTOM REINFORCEMENT			SHEAR STIRRUPS
	B	D	LEFT	MID SPAN	RIGHT	LEFT	MID SPAN	RIGHT	
B1	230	450	3X16Y	2X16Y	3X16Y	2X16Y	3X16Y	2X16Y	2L-8Y @ 150C/C
B2	230	450	2X16Y	2X16Y	4X16Y	2X16Y	3X16Y	2X16Y	2L-8Y @ 150C/C
B3	230	600	5X20Y	2X20Y	5X20Y	2X20Y	5X20Y	2X20Y	2L-8Y @ 150C/C
B4	230	450	2X16Y	2X16Y	2X16Y	2X16Y	2X16Y	2X16Y	2L-8Y @ 150C/C
B5	230	450	2X20Y	2X20Y	2X20Y	2X20Y	2X20Y	2X20Y	2L-8Y @ 150C/C
B6	230	450	4X16Y	2X16Y	4X16Y	2X16Y	4X16Y	2X16Y	2L-8Y @ 150C/C
B7	230	450	3X16Y	3X16Y	3X16Y	3X16Y	3X16Y	3X16Y	2L-8Y @ 150C/C
B8	230	450	3X16Y	3X16Y	3X16Y	3X16Y	3X16Y	3X16Y	2L-10Y @ 150C/C
B9	230	600	5X20Y	2X20Y	5X20Y	2X20Y	5X20Y	2X20Y	2L-10Y @ 150C/C
B10	230	450	3X16Y	3X16Y	3X16Y	3X16Y	3X16Y	3X16Y	2L-8Y @ 150C/C
B11	230	450	3X16Y	3X16Y	3X16Y	3X16Y	3X16Y	3X16Y	2L-8Y @ 150C/C
B12	230	600	5X25Y	2X25Y	5X25Y	2X25Y	5X25Y	2X25Y	2L-8Y @ 150C/C
B12a	230	450	2X25Y	2X25Y	2X25Y	2X25Y	2X25Y	2X25Y	2L-8Y @ 150C/C
B12b	230	600	5X25Y	2X25Y	5X25Y	2X25Y	5X25Y	2X25Y	2L-8Y @ 150C/C
B13	230	600	5X25Y	2X25Y	5X25Y	2X25Y	5X25Y	2X25Y	2L-10Y @ 150C/C
B14	230	600	5X25Y	2X25Y	5X25Y	2X25Y	5X25Y	2X25Y	2L-10Y @ 150C/C
B15	230	600	5X25Y	2X25Y	5X25Y	2X25Y	5X25Y	2X25Y	2L-10Y @ 150C/C
B15a	230	450	3X16Y	3X16Y	3X16Y	3X16Y	3X16Y	3X16Y	2L-8Y @ 150C/C
B16	230	450	2X12Y	2X12Y	2X12Y	2X12Y	2X12Y	2X12Y	2L-8Y @ 150C/C
B17	230	450	5X20Y	3X20Y	5X20Y	3X20Y	5X20Y	3X20Y	2L-10Y @ 150C/C
B18	230	450	3X16Y	3X16Y	3X16Y	3X16Y	3X16Y	3X16Y	2L-8Y @ 150C/C

TERRACE FLOOR SLAB REINFORCEMENT DETAILS

SL.NO	SLAB NAMES	THK	TYPE	BOTTOM REINFORCEMENT		TOP REINFORCEMENT		DISTRIBUTION	REMARKS
				SHORT SPAN (BENT UP)	LONG SPAN (BENT UP)	SHORT SPAN (BENT UP)	LONG SPAN (BENT UP)		
1	S1, S3, S4, S11	150	2-Way	12Y@150C/C	10Y@150C/C	12Y@150C/C	10Y@150C/C	8Y@200C/C	-
2	S7, S8	150	2-Way	10Y@150C/C	8Y@150C/C	10Y@150C/C	8Y@150C/C	8Y@200C/C	-
3	S2, S5, S6, S10	150	2-Way	10Y@150C/C	8Y@150C/C	10Y@150C/C	8Y@150C/C	8Y@175C/C	-
4	S9, S15	150	1-Way	8Y@150C/C	8Y@150C/C	8Y@150C/C	8Y@150C/C	8Y@175C/C	-
5	S12, S13, S14	150	1-Way	12Y@125C/C	10Y@150C/C	12Y@125C/C	10Y@150C/C	8Y@150C/C	-

- * "Y" denotes deformed bars.
- * Clear cover for reinforcements shall be.
 - i) For Columns 40mm to all reinforcement.
 - ii) For Beams 25mm to all reinforcement.
 - iii) For Slabs 20mm to all reinforcement.
- * Minimum lap length shall be 50xDiameter of the main bar for all R.C.C. works.
- * Use M25 grade concrete and Fe 500 grade steel for all R.C.C. works.
- * This Building is designed for G +2 floors

OWNER	REGISTERED ENGINEER
-------	---------------------

REV.	DATE	DESCRIPTION	DWN.	APP.
REVISIONS				

REFERENCES:

PROPOSED CONSTRUCTION OF
TRAINING CENTRE FOR INDSETI
AT VILLUPURAM

TERRACE FLOOR BEAM
AND SLAB LAYOUT & DETAILS
STRUCTURAL TENDER DRAWING

Department	STRUCTURE
Drawn	V.Sangavathi
Dealt	R.Ganesh
Checked	R.Ganesh
Date	17.03.2026

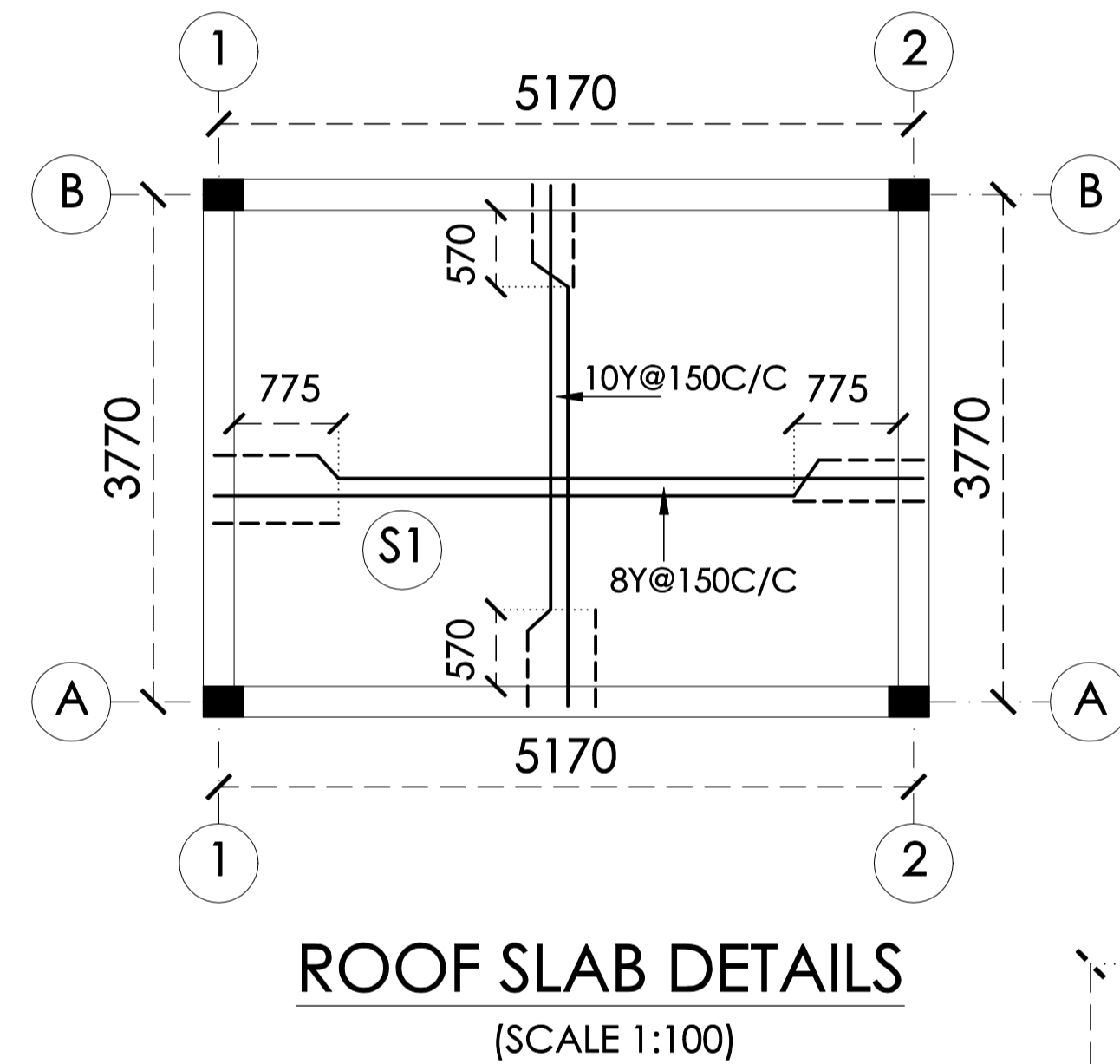
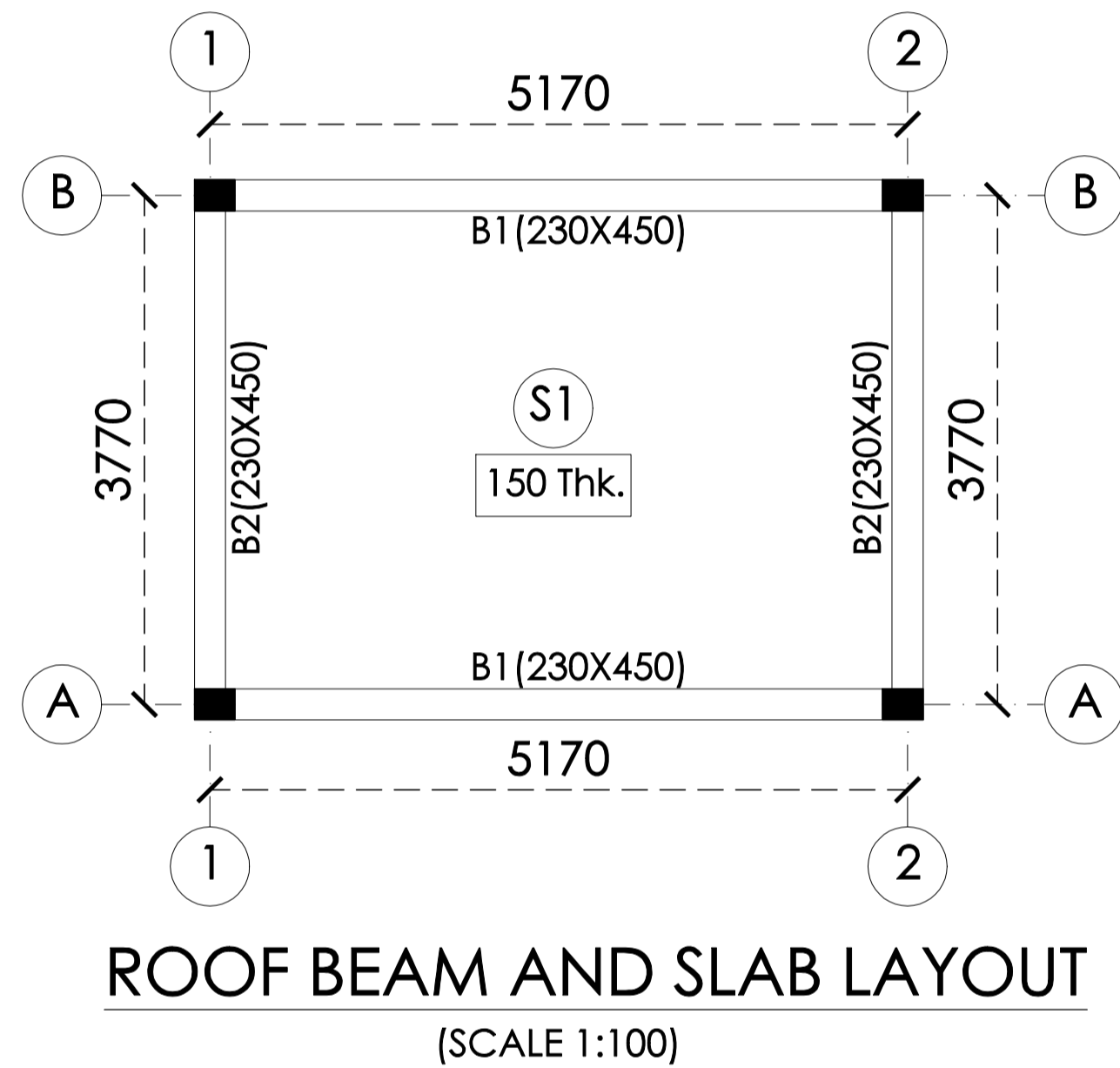
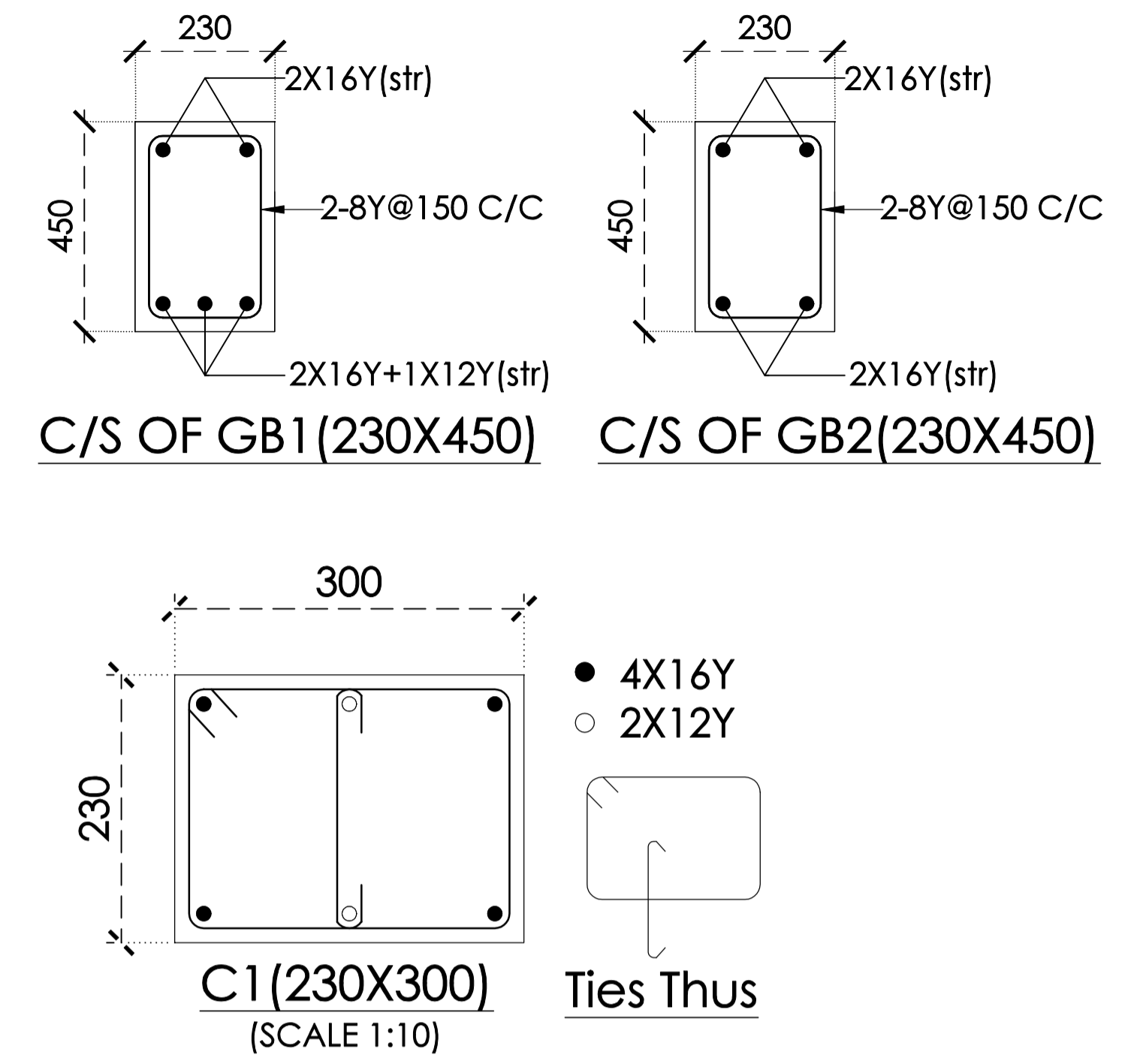
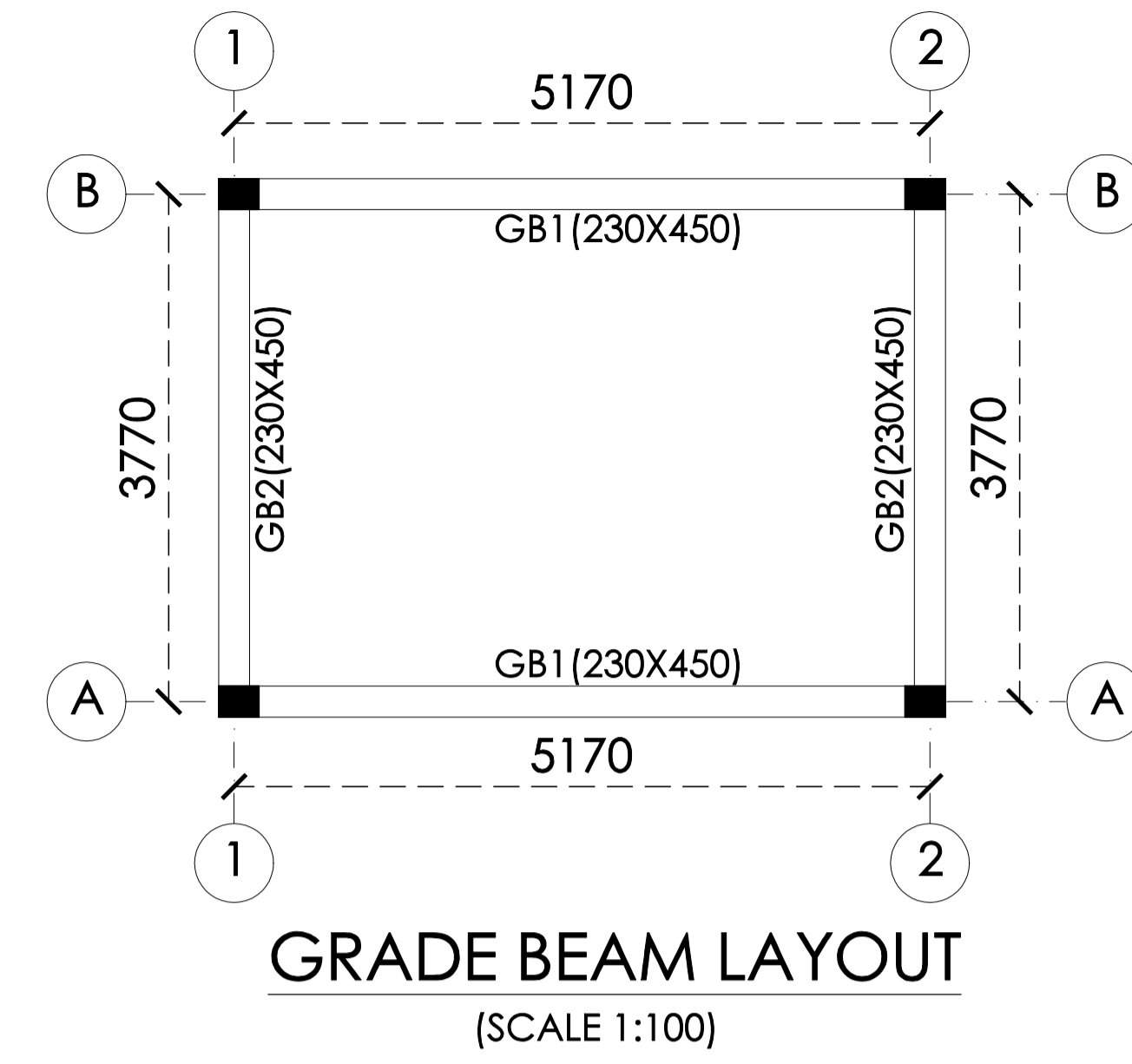
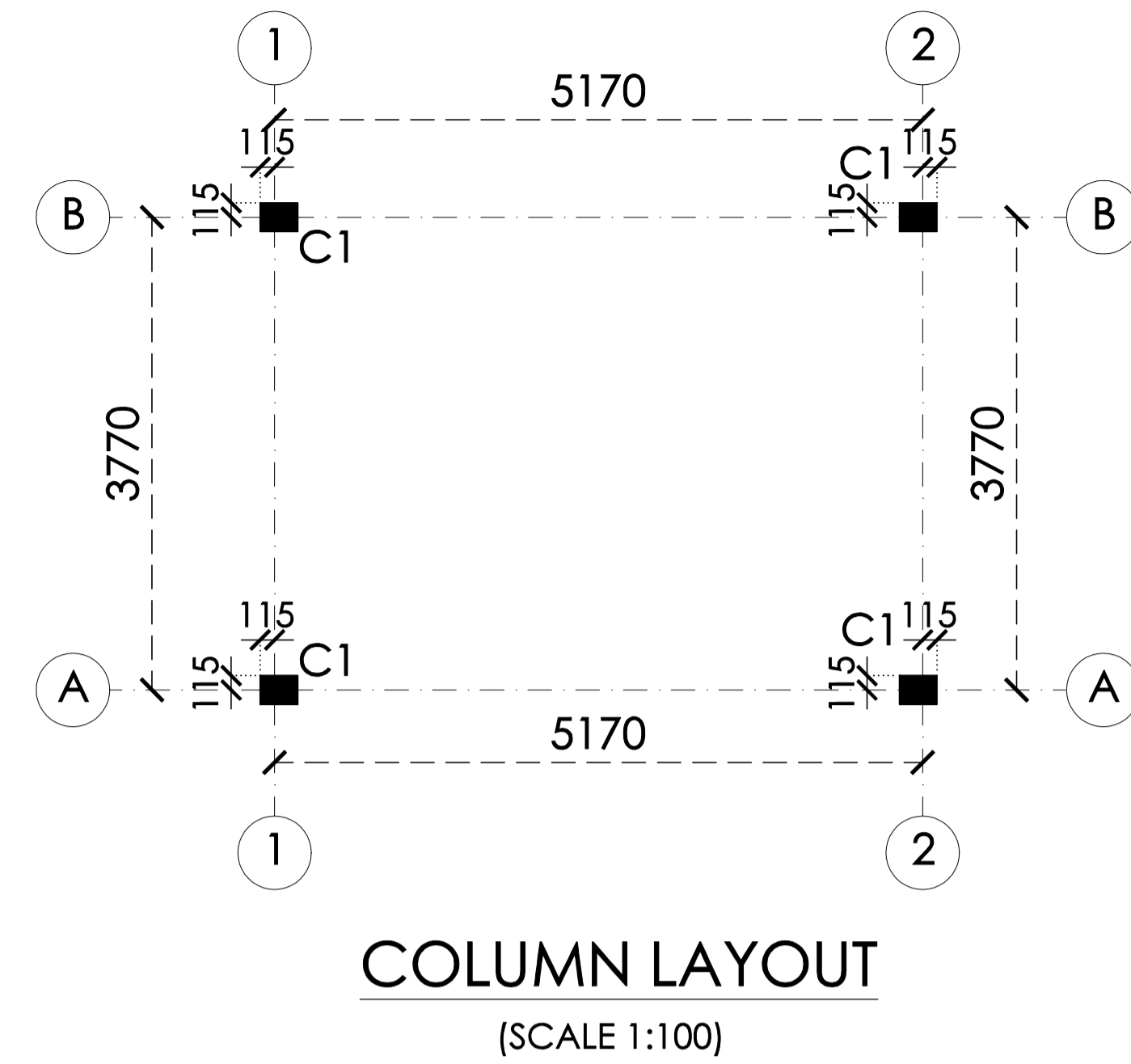
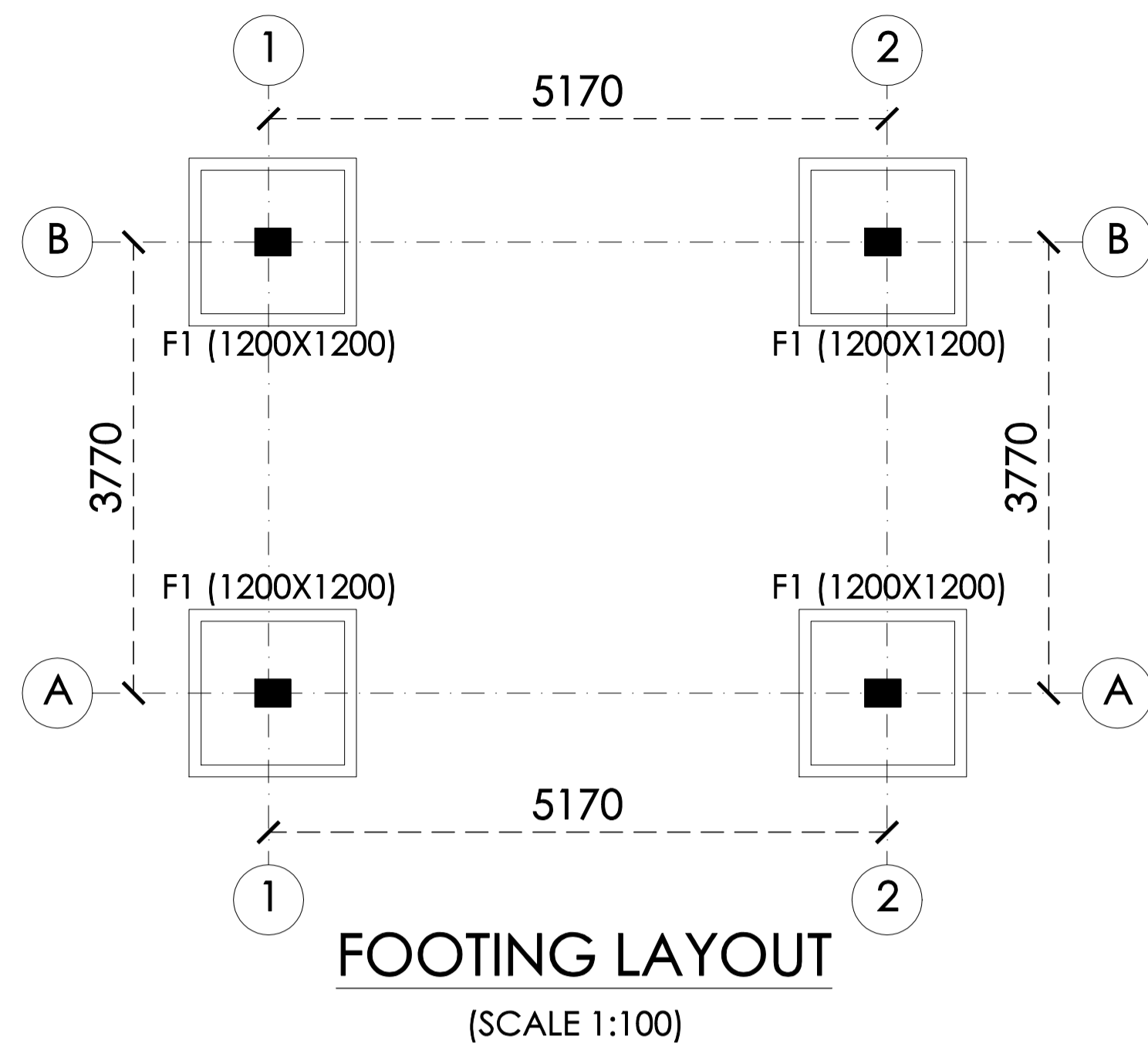
Sheet size A 2

Structural Consultant:



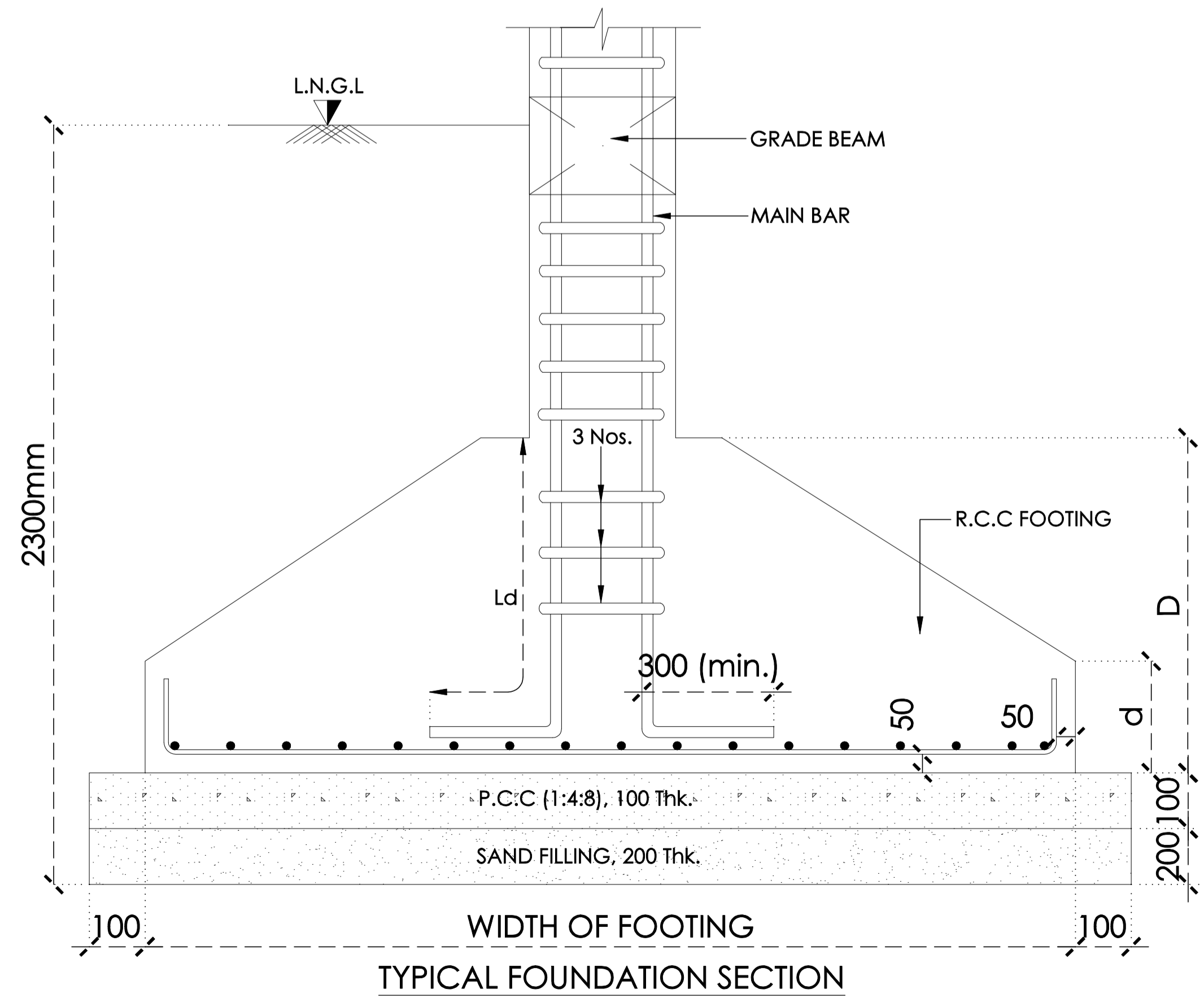
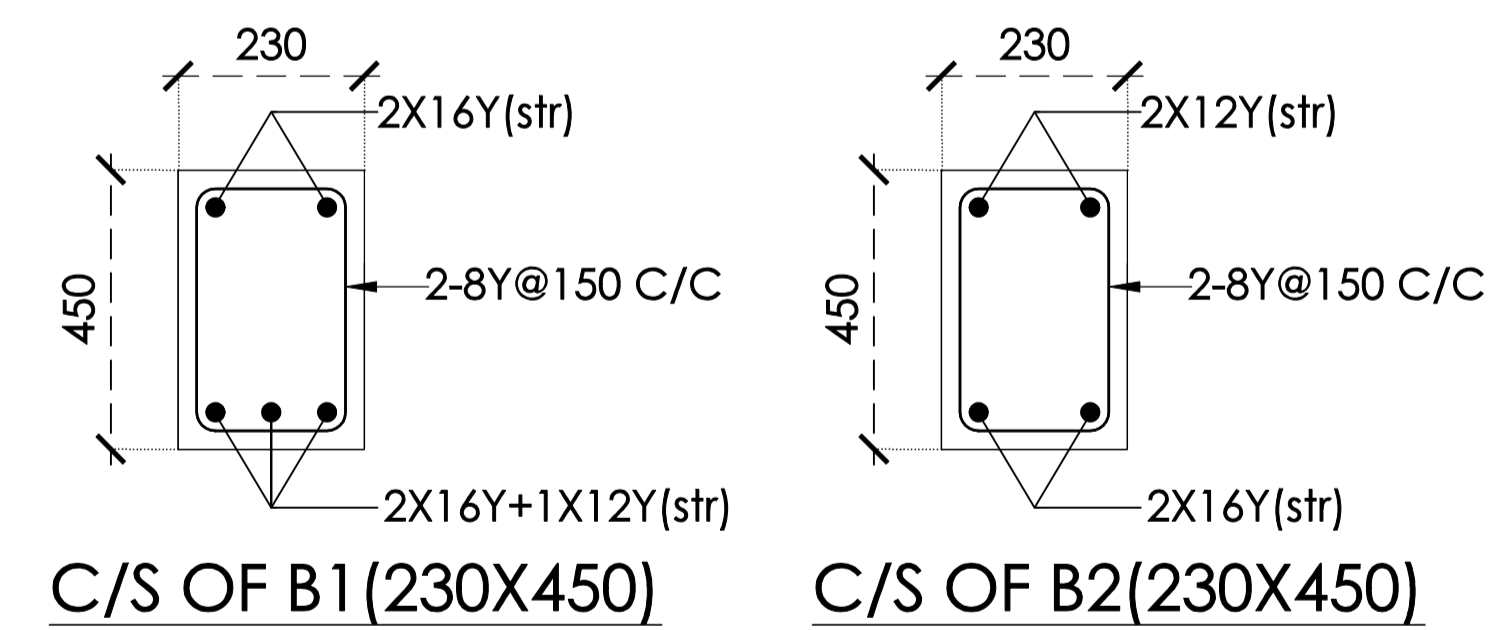
Er.R.GANESH, M.Tech.
Mobile : 9789455270
email: ganeshramu1987@gmail.com

SCALE 1:100



SCHEDULE OF FOOTINGS:

FOOTING MARK	FOOTING SIZE	LEDGE		DEPTH		ASP	ASQ	TOTAL NOS.
		X	Y	(D)	(d)			
F1	1200 X 1200	450	450	450	250	10Y@150C/C	10Y@150C/C	4



PROPOSED CONSTRUCTION OF TRAINING CENTRE FOR INDSETI AT VILLUPURAM

BATTERY ROOM LAYOUT AND DETAILS

STRUCTURAL TENDER DRAWING

Department STRUCTURE
 Drawn R. Ganesh
 Dealt R. Ganesh
 Checked R. Ganesh
 Date 17.04.2026

Sheet size **A3**

Structural Consultant:

SG CONSULTANTS

Er.R.GANESH, M.Tech.
 Mobile : 9789455270
 email: ganeshramu1987@gmail.com

Sheet No: 06

