



ZONAL OFFICE-NORTH,  
PREMISES, ESTATE & EXPENDITURE DEPT,  
KREST BUILDING, 2ND FLOOR,NO 2, JEHANGIR STREET,  
CHENNAI-600001.

**TENDER DOCUMENT – TENDER FOR PROPOSED INTERIOR CIVIL,FURNISHING,ELECTRICAL & AIR CONDITIONING WORK OF ZONAL OFFICE AND SPECIALISED VERTICALS ALTERNATE PREMISES AT GROUND FLOOR INDIAN BANK, ZONAL OFFICE BUILDING,NO:55, ETHIRAJ SALAI, EGMORE, CHENNAI – 600 008.**

**PART-II PRICE BID**

Ref.No:  
Date : 22.05.2026

Name of the contractor:

.....  
.....  
.....

Last date of submission of tenders	15.06.2026 upto 15.00Hrs. at Indian Bank, Zonal Office-North,Premises, Estate & Expenditure Dept,,KREST Building, 2nd floor,No 2, Jehangir Street, Chennai-600001
Date of opening Tender	15.06.2026 upto 15.00Hrs. at Indian Bank, Zonal Office-North,Premises, Estate & Expenditure Dept,,KREST Building, 2nd floor,No 2, Jehangir Street, Chennai-600001
Cost Of Tender	Free Of Cost.

Note: Any query on the subject tender may be addressed to Indian Bank Zonal Office Chennai North on or before 27.05.2026 via mail.

**CONSULTANTS:**

**M/S. ARUN ARCHITECTS,  
NEW NO: U-12 OLD NO. U-27  
CHENNAI 600 040.**





PH : 044-79684926  
MOBILE : 9444016095

## INDIAN BANK – Zonal Office, North

<b>SUMMARY</b>		
<b>SL.NO</b>	<b>Description</b>	<b>Amount</b>
<b>A</b>	<b>ZONAL OFFICE NORTH</b>	
1	Civil Work	
2	Furnishing work	
3	Electrical Work	
4	Air Conditioning work	
	Total -A	
<b>B</b>	<b>SPECIALISED VERTICALS RAPC, MAPC &amp; RAC</b>	
1	Civil Work	
2	Furnishing work	
3	Electrical Work	
4	Air Conditioning work	
	Total -B	
	<b>GRAND TOTAL (A+B) (Excluding GST)</b>	

Place:

Date:

Signature of contractor with seal



## A-ZONAL OFFICE NORTH

SCHEDULE OF QUANTITIES FOR PROPOSED INTERIOR WORKS OF ZONAL OFFICE NORTH AT INDIAN BANK ZONAL OFFICE 4TH FLOOR , NO:55,ETHIRAJ SALAI,EGMORE,CHENNAI-600 008					
CIVIL WORK					
SI.No	DESCRIPTION OF WORK	Qty	Rate	Per Unit	Amount ( Rs)
<b>A</b>	<b>DISMANTLING</b>				
<b>1</b>	<b>Dismantling of floor &amp; Walls</b>				
	Dismantling existing marble, granite, kota, marble mosaic, ceramic tile flooring & dado including skirting and excavation and walls up to slab in plinth wherever required, etc. In a manner which facilitates laying of new flooring without undue extra expense. <b>The rate shall include removal of debris from site.</b> The work shall also involve removal of all water and waste lines including sanitary fittings, GI pipes, etc complete.	3800		1Sqft	
<b>2</b>	Dismantling the existing window of sizes 4'-0" x 4'-0" along with the Grills taking away from the site	2		1No	
<b>B</b>	<b>BRICKWORK &amp; CONCRETE</b>				
<b>3</b>	<b>9" Brick Work</b> :Providing and constructing 9" thick brick masonry with C.M 1:5 of approved quality bricks of standard size, with all necessary fixing accessories, arrangements and etc. Brick wall shall be properly embedded and inserted on the existing walls and columns. Cost include wall cutting for laying the new brickwall into the existing structure, curing, levelling, wastages, transport, loading, cleaning the area time to time, unloading charges, tools, labours, scaffolding, lead & lift, materials and etc. Complete at all height. Complete as per instructions of the Architect. <b>(The rate shall be inclusive of MS pipe scaffolding to be erected as per work specified &amp; prevailing standards)</b>	70		1Sqft	
<b>4</b>	<b>4.5" Brick Work</b> :Providing and constructing 4.5" thick brick masonry with C.M 1:5 of approved quality bricks of standard size, with all necessary fixing accessories, arrangements and etc. 2 nos of 6 mm dia MS round rods at every 4th course embedded in CM Cost include wall cutting for laying the new brickwall into the existing structure, curing, levelling, wastages, transport, loading, cleaning the area time to time, unloading charges, tools, labours, scaffolding, etc. Complete at all height.. <b>(The rate shall be inclusive of MS pipe scaffolding to be erected as per work specified &amp; prevailing standards)</b>	240		1Sqft	



SI.No	DESCRIPTION OF WORK	Qty	Rate	Per Unit	Amount (Rs)
5	<b>Plastering-</b> Providing and Plastering the new brick works in C.M. 1:4 ( 1 Cement 4 sand ) with thickness varying from 11.6mm to 19mm at all heights with all accessories, arrangements and etc. Rates to include cost of all materials, labour, transport, loading, unloading charges, cleaning the area time to time, scaffolding, hire charges, tools, lead & lift to all floors, curing and completion the work in all respects. Complete as per instructions of the Architect.( <b>The rate shall be inclusive of MS pipe scaffolding to be erected as per work specified &amp; prevailing standards</b> )	700		1Sqft	
6	<b>RCC LINTEL(4'6"x4.5"x9")</b> - Providing and laying RCC Lintel Beam in 1:1.5:3 using 20mm size blue metal, placing in position compacting, trawelling, ramming and curing rate include cost of all labour materials necessary tools and curing. Rate shall include cost of supplying steel(4 nos #10,8mm stirrups) fabricating and placing in position of steel reinforcement. Cost include necessary shuttering, materials, tools, lead & lift, loading, unloading charges, transport, equipments, scaffolding, hire charges, centering and form work. and etc., Complete in all standard and specifications. Complete as per drawings and instructions of the Architect.	2		No	
7	Providing and laying RCC slab in 1:1.5:3 using 20mm size blue metal, placing in position compacting, trawelling, ramming and curing rate include cost of all labour materials necessary tools and curing. Rate include cost of supplying steel(10mm for main ,8mm for distribution along the length & width) fabricating and placing in position of steel reinforcement. Cost include necessary cut outs for placing the washbasin. <b>The slab to be finished with 20mm thick Black granite top and fascia with proper necessary cutouts for the fixing of wahbasin.</b>	50		1 Sft	
<b>C</b>	<b>JOINERY</b>				
8	<b>WPC Doors with frames for toilet</b> - Supplying and fixing 30mm Solid core WPC door to be fixed WPC door frames with all necessary fixing accessories, arrangements etc. Door size 761.6mm/900mm x 2135mm,. The Door to be finished with 1mm thick approved Waterproof laminate on outside & 1coat wood primer, 2coats of enamel paint on Other side of door of approved colour.Cost include of necessary SS hardwares Complete as per instructions of the architect /bank engineer	2		No	



SI.No	DESCRIPTION OF WORK	Qty	Rate	Per Unit	Amount (Rs)
9	Supply & installation of UPVC Ventilator with provision for exhaust fan of 9" of approved manufacture & Sections(DIMEX/Fenesta) etc.(The rate shall be inclusive of MS pipe scaffolding to be erected as per work specified & prevailing standards)	6		1Sqft	
<b>D</b>	<b>WATERPROOFING WORK</b>				
10	Water Proofing Toilet: Providing and water proofing as under- Prepare the surface of Toilet floor and walls upto 450mm height applying Fosroc Liquid applied cement based waterproofing systems Brushbond Elastometric acrylic modified cementitious coating for concrete and masonry surface in 2 coats as per manufacturer specifications. Plastering with cm 1:3, 20 mm thick mixed with water proof admixture of fosroc conplast or any suitable admixture as per manufacturer specification including rounding off junction of vertical and horizontal surface. Complete complying with standard specifications and as directed by architect. Cost include all accessories like wastages, transports, loading, unloading charges, chipping the existing plastering, labours, materials, tools, lead, lift, curing, all taxes & duties, approved water proofing compound and etc. Measurement shall be measured in applied area only in SFT. Pond test for min 48 hrs to be carried out. Warranty of 5 years to be given	95		1Sft	
11	Supply and filling brick jelly concrete using best quality broken brick jelly of 20 mm of using 1:5 Cement mortar , curing, finishing. as required as per site, after completing plumbing lines, water proofing plating etc. Complete as per instructions of the architect /bank engineer.	45		1Cft	
<b>E</b>	<b>TILING WORK</b>				
12	<b>TOILET GLAZED WALL TILE-</b> Supplying and fixing of Glazed wall tiles of size (300mm x 450mm) of approved colour, design and pattern shall be fixed with 11.6mm thick cement paste for base course and applied over the existing wall, fixing in position with neat line and level and pointing with white cement mixed with colouring pigments and etc. Corner shall be finished with PVC beading of approved size. Cost include wastages, cutting, tools, transport, lead, lift, curing, cleaning the area time to time, loading, unloading, and etc. Complete as per instructions of the Architect.(Basic rate Rs.50/Sft after discount)	400		1Sft	



SI.No	DESCRIPTION OF WORK	Qty	Rate	Per Unit	Amount (Rs)
13	<b>ANTI SKID TILES FINISH IN TOILET-</b> Supplying and fixing of Anti-Skid Toilet floor tile of size (300mm x 300mm) of approved colour, design and pattern shall be laid over 20mm thick cement mortar 1:3 (One cement and Three sand) base mortar, laying in position, slope for water drain flow and pointing with white cement mixed with colouring pigments etc. Cost include wastages, cutting, tools, lead, lift, transport, curing, cleaning the area time to time, loading, unloading, materials and etc. Complete as per instructions of the Architect. (Basic rate Rs.45/Sft after discount)	90		1Sft	
14	<b>VITRIFIED FLOORING</b> Providing and fixing VITRIFIED Tiles 600mmx1200mm of approved make, shade and pattern as approved by Bank/ Architect. In CM 1:4 in proper line and level with out spacers for maintaining the grid lines. Rate shall be inclusive of providing joint filling compound of the same shade of the tiles and including pop covering on the new flooring for the protection of tiles with base covering plastic. Including skirting of 4" height.(Rate not less than Rs.75/Sft after discount)	4200		Sft	
<b>F</b>	<b>PLUMBING</b>				
15	<b>PVC SANITARY PIPES-</b> Providing and fixing PVC pipes fixed for toilet Water line internal & external ,waste and sewage line fixing in position and connect to the existing plumbing line or nearest manhole chamber with all necessary fixing accessories, arrangements and etc. Cost include cutting wall or concrete surface fixing to walls or brackets using all types of MS clamps, core cutting if any making joints using solvent cement solution, making grooves in masonry to conceal the pipes, restoring damaged portions with CM 1:4 and jelly, to their original condition, packing work and necessary slope, all specials like tee joint, reducer, door elbow, door tee, "u" bend for water seal and etc., conducting leak test in all floors heights and cart away the debris from the site, all necessary fixing accessories such as civil works, tools, materials, cutting, fittings, scaffolding, labours, transport, loading, unloading charges, lead & lift to all floors and etc. Complete as per instructions of the Architect.				
a	As above specification for PVC 75mm dia (6 kg/cm <sup>2</sup> )	40		RM	
b	110mm dia(6Kg/Cm <sup>2</sup> )	25		RM	



SI.No	DESCRIPTION OF WORK	Qty	Rate	Per Unit	Amount (Rs)
c	25mm dia	150		RM	
d	32mm dia	80		RM	
<b>G</b>	<b>SANITARY FITTINGS</b>				
16	<b>EUROPEAN WATER CLOSET-</b> Supplying and fixing approved make <b>Wall hung European Water Closet (EWC) with Concealed Water tank</b> fixing in wall dado including all the necessary work to conceal the water tank, including flushing buttons, erection of Brick wall to conceal the tank all materials, labour necessary accessories etc complete Parryware or Equivalent	2		1No	
17	<b>Supply &amp; Fixing of</b> White or any pastel colour glazed <b>urinal</b> with one pair of concealed non corrosive brackets, sensor type flush valve , C.P.spreader, connecting tube, waste coupling with domen grating, bottle trap etc., installing the urinal to plumb in compete with all accessories, testing, cutting walls wherever required, restoring the same to their original conditions with required materials, testing the installation, commission etc., complete.	2		1No	
18	<b>UNDER COUNTER BASIN:</b> Providing and fixing of Under Counter Basin size 380mm x 490mm including necessary fixing accessories and arrangements like RCC slab with black granite top and front facia , Connection hose 610mm length, angular stop cock, waste coupling, waste pipe etc., complete in all standards. Cost include all necessary fixing accessories sush as tools, materials, labours, transport, loading, unloading charges and etc. Complete as per instructions of the Architect/bank engineer.	3		1No	
19	Supplying and fixing the Two way bib cock and wall flange with all necessary fixing accessories, arrangements and etc. Complete as per instructions of the Architect. Make: Parryware or Equivalent	2		1No	
20	Supplying and fixing the Health Faucet with wall hook and long flexible hose with all necessary fixing accessories, arrangements and etc. Cost include tools, materials, hardwares, wastages, lead, lift and etc. Complete as per instructions of the Architect. Make: Parryware or Equivalent	2		1No	



SI.No	DESCRIPTION OF WORK	Qty	Rate	Per Unit	Amount (Rs)
21	<b>FLOOR TRAP:</b> Supplying and Fixing position PVC floor trap with Best stainless steel gratings of approved brand and quality of size 110mm dia inlet, 75mm and 50mm dia outlet with all necessary fixing accessories, arrangements and etc. Cost include labour, tools, materials, lead, lift, removing the existing floor trap, cutting the floor slab, loading, unloading and etc. Complete as per instructions of the Architect.	4		1No	
22	Supplying and fixing 15mm CP pillar cock for wash basin. Parryware or equivalent make with all necessary accessories, teflon tape, flange etc complete	3		1No	
23	Supplying and fixing 15mm CP angle valve with CP connection Parryware or equivalent make	15		1No	
24	Supplying and fixing chromium plated towel rod of approved make 20mm dia, 600mm long with chromium plated concealed brackets fixing to wall dado using suitable size non-corrosive screws, teak wood plugs etc. complete.	3		1No	
25	Supplying and fixing of 37x18x8 Bowl Sink with Drain Board stainless fixed to wall with GI L clamp with all necessary accessories, teflon tape, flange etc complete	1		1No	
26	Supplying and fixing 15mm CP Swan neck tap for sink. with all necessary accessories, teflon tape, flange etc complete	1		1No	
27	Supplying and fixing chromium plated Coat Hook of approved make	2		1No	
28	Supplying and fixing 6mm thick, <b>600x1800 mm</b> approved make clear mirror made out of SS Stud and 12mm thick BWR plywood back and finished neatly. Rate should be inclusive of all necessary fixtures and fittings.	2		1No	
<b>H</b>	<b>PAINTING WORKS</b>				
29	Providing & applying Premium Emulsion paint of shade in minimum 3 coats including 2coats of putty and 1 coat of primer, filling up of "V" cracks with epoxy expandable putty to required depths, making good weak plastered / unplastered surfaces with cement plaster wherever required. Item to include, primer, putty & making good existing surface to receive new paint including cleaning on completion of painting work etc. complete in all respects. <b>(The rate shall be inclusive of MS pipe scaffolding to be erected as per work specified &amp; prevailing standards)</b>	5000		1 Sft	



SI.No	DESCRIPTION OF WORK	Qty	Rate	Per Unit	Amount (Rs)
30	Providing & Applying 2 coats of approved colour of enamel over a 1 coat of primer after necessary surface preparation.	350		1 Sft	
31	Providing 9" Dia holes in UPS by core cutting method	2		1No	
<b>Total CIVIL</b>					

**Place:**  
**Date:**

**Signature of contractor with seal**



**SCHEDULE OF QUANTITIES FOR PROPOSED INTERIOR WORKS OF ZONAL OFFICE NORTH AT INDIAN BANK ZONAL OFFICE 4TH FLOOR , NO:55,ETHIRAJ SALAI,EGMORE,CHENNAI-600 008**

**FURNISHING WORK**

Sl. No	DESCRIPTION OF WORK	Qty.	Rate	Per Unit	Amount R s.
1	<b>PARTITIONS</b>				
a	<b>PARTLY GLAZED FULL HEIGHT PARTITION</b>				
	<p>Providing and fixing in position partly glazed full height partition work in frame work at 2' X 2' grid (horizontally and vertically) comprising of Aluminium section 50mm x 50mm 1.3mm thick with 8mm thick Calcium Silicate board on both sides . The board joints and screw heads must be finished with a jointing compound, paper tape, and fiber tape to prevent cracking, followed by a minimum of two coats of Putty one coat of primer &amp; 2 coats of Premium emulsion paint of approved colour. Item to include 8 mm thick float glass IS 14900 with etching/Film or Vinyl Poster as per design to be fixed with 1-1/4" x 3/4" T.W. moulding / laminated beading finished with paint /polish as directed and 2" X 2" T.W. member for door sides and glass side</p> <p>All exposed T.W. surfaces to be finished in polish of matching laminate colour as directed including all necessary Stainless Steel finish fittings / hardware, and wood preservative paint etc. as per list of approved material and as approved by the Project consultant / bank complete in all respects. <b>(Note : In case of false ceiling, the vertical T.W. members to be fixed with pucca ceiling but the area of partition payable will be below the false ceiling only).</b></p>	150		Sqft	
b	<b>SOILD FULL HEIGHT PARTITION</b>				
	<p>Providing and fixing in position solid Full height partition work in frame work at 2' X 2' grid (horizontally and vertically) comprising of Aluminium section 50mm x 50mm 1.3mm thick with 8mm thick Calcium Silicate board on both sides . The board joints and screw heads must be finished with a jointing compound, paper tape, and fiber tape to prevent cracking, followed by a minimum of two coats of Putty one coat of primer &amp; 2 coats of Premium emulsion paint of approved colour with all necessary fixing accessories, arrangements and etc.Rate to include providing cutouts and provisions to run electrical conduits, switches, etc</p>				



Sl. No	DESCRIPTION OF WORK	Qty.	Rate	Per Unit	Amount R s.
	and 2" X 2" T.W. member for door sides All exposed T.W. surfaces to be finished in polish of matching laminate colour as directed including all necessary Stainless Steel finish fittings / hardware, and wood preservative paint etc. as per list of approved material and as approved by the Project consultant / bank complete in all respects.  <b>(Note : In case of false ceiling, the vertical T.W. members to be fixed with pucca ceiling but the area of partition payable will be below the false ceiling only)</b>	430		Sqft	
<b>c</b>	<b>SOILD FULL HEIGHT One side Bison</b>				
	Same as above specification, but one side using 8mm thick bison board finished with 2 coats of putty one coat of primer and 2 coats of plastic emulsion paint .	800		Sqft	
<b>d</b>	<b>Bison Partition</b>				
	Same as above Solid Partition specification, but using 8mm thick bison board finished with 2 coats of putty one coat of primer and 2 coats of plastic emulsion paint on both sides	210		Sqft	
<b>e</b>	<b>4'- 0" HEIGHT PARTITION</b>				
	Supplying & installation of solid partition made of frame work at 2' X 2' grid (horizontally and vertically) comprising of Aluminium section 50mm x 50mm 1.3mm thick with 8mm thick Calcium Silicate board on both sides . The board joints and screw heads must be finished with a jointing compound, paper tape, and fiber tape to prevent cracking, followed by a minimum of two coats of Putty one coat of primer & 2 coats of Premium emulsion paint of approved colour. The partition shall be fitted with 12mm thick float glass polished on all sides to a height of 0'-9" (included in 4'-0" depth) .	700		1Sft	
<b>2</b>	<b>DOORS</b>				
<b>a</b>	<b>ENTRANCE DOOR</b>				
	Location: Main entry; Size: Main door - Average size – Double leaf – 1800 mm width x 2400 mm (min.) height. Material: 12 mm thk. Clear edge polished toughened glass. Hardware: SS Floor Spring, Latch lock/Dead Lock (Bottom or centre) , SS Handle "H or D" type (900 Long and 25 mm dia).				

Sl. No	DESCRIPTION OF WORK	Qty.	Rate	Per Unit	Amount R s.
	<p>Installation of fully glazed frameless glazed door (Single or double leaf of size as mentioned in drawing and as directed by the Architect) made out of 12 mm thk. Toughened glass and the door shall be fixed with floor springs with SS finish patch fittings on top, bottom. Lock. The door shall have lock in the center of approved make with 450 mm to 600 mm long SS handle of 25 mm dia. (for internal doors) and 900 mm long SS handles of 25 mm dia. (for main entry doors) to be fitted horizontally/ vertically as per instructions of the Architect.</p> <p>The Rate shall be including the making of necessary holes in glass for Access control locks, complete in all respect with all hardware, fittings, fixtures etc. complete in all respects. All necessary hardware, fittings, fixtures to be approved from the Architect or Bank's Officials before actual application of the same. Any change in the specifications must be first approved from the Architect and the Bank.</p>	28		1Sft	
<b>b</b>	<b>Partly glazed Partition door</b>				
	<p>Supply and installation of flush door 30mm thick ness of size 3'-0" x 7'-0" Shutter shall be finished with 1.0 mm thick laminate on both sides of approved shade and design. Door shall be lipped with 12 mm thick. t w beading along the edges. 8mm thick Float glasss to be used as required sizes fixed to TW beading finished with polish. Rate shall be inclusive of hardware, fittings, fixtures etc. in heavy duty SS such as lock of 6 lever of Godrej or Doorset make with SS mortise handle of approved make and model. Rate shall be inclusive of open door closers, SS heavy duty hinges, tower bolts, SS foot operated door stopper, SS buffer along the back side and any other related hardware , fittings, fixtures etc. required. The item shall include polishing of edges and frames in melamine , PU , paint as approved by the Architect.</p>	42		1 Sft.	



Sl. No	DESCRIPTION OF WORK	Qty.	Rate	Per Unit	Amount R s.
c	<b>PARTITION FLUSH DOOR</b>				
	Supply and installation of flush door 30mm thick ness of size 3'-0" x 7'-0" Shutter shall be finished with 1.0 mm thick laminate on both sides of approved shade and design. Door shall be lipped with 12 mm thick. t w beading along the edges. . Rate shall be inclusive of hardware, fittings, fixtures etc. in heavy duty SS such as lock of 6 lever of Godrej or Doorset make with SS mortise handle of approved make and model. Rate shall be inclusive of open door closers, SS heavy duty hinges, tower bolts, SS foot operated door stopper, SS buffer along the back side and any other related hardware , fittings, fixtures etc. required. The item shall include polishing of edges and frames in melamine , PU , paint as approved by the Architect.	147		1 Sft.	
3	<b>FULL HEIGHT STORAGE FINISHED IN LAMINATE</b>				
	<p><b>Size:</b> Length as available size, 450 mm (D) and 2400 mm/750mm (H).</p> <p><b>Material:</b> 18 mm thick. MR Grade Plywood finished with 1mm thick laminate of approved colour &amp; shade externally and internally finished with 0.8 mm thick. balancing white or off-white laminate.</p> <p><b>SPECIFICATIONS FOR FULL HEIGHT STORAGE FINISHED WITH LAMINATE</b></p> <p>Providing and fixing full height storage cabinet made out of 18mm thick MR Grade Plywood of approved make including the fixing of shelves at 400 mm to 450 c/c and the shutters shall be in 18 mm thick MR Grade Plywood and back covered with 12 mm MR Grade Plywood . The shutters made of 18mm thick MR Grade Plywood shall be divided vertically into 2 parts and shall be fixed with "S" type L-hinges of approved make so as to get an equal 8 mm groove between all the shutters at the opening and hinged end of every shutter as per the detailed drawing. The shutter shall be fixed with SS chain from inside so as to open the shutter less than 90 degree and to avoid the breaking of laminate at the hinged end. The shutters shall be finished externally with approved quality 1.0 mm thick laminate and internally finished with 0.8 mm thick. balancing white or off-white laminate. Rate shall be inclusive of provision of SS "D" type handles 4" or 6" as approved, Godrej or Vijayan locks with 3 keys, tower bolts off SS make etc. and all the necessary hardware, fixtures, fittings etc complete in all respects as directed by the Architect.</p>				

Sl. No	DESCRIPTION OF WORK	Qty.	Rate	Per Unit	Amount R s.
a	2'-6" Height	170		1Sft	
b	7'-0" Height	600		1Sft	
4	<b>GYPSUM False Ceiling :</b>				
	<p><b>Gypsum False Ceiling :</b> Plain gypsum board MR/FR grade ceiling: 12 mm thick Plain gypsum MR/FR grade false ceiling Suspension( considering all levels with require all fabricataion work and fitting from RCC slab to false ceiling level &amp; The rate shall be considered in sqm for all floors and at all heights, offsets whether covelight or fixed gypsum board size up to 100 mm to 1200 mm in the false ceilings including all costs) . Work complete as per the manufacturers specification of Saint Gobain or approved make- M/F Suspended Ceiling 1 hour fire rated.</p> <p>Providing and fixing Suspended ceiling using Gypsum or equivalent of ULtra G. I. Perimeter Channels of size 0.55mm thick having one flange of 20mm and another flange of 30mm and web 27mm along with perimeter of ceiling, screw fixed to</p> <p>brick wall / partitions with the help of nylon sleeves and screws, at min. 600 mm centers. Then suspending G. I. intermediate channel of size 45mm, 0.9mm thick with two flanges of 15mm each from the soffit at 1220mm centers with ceiling angle of width 25mm x 10mm x 0.55mm thick fixed to soffit with G. I. cleat and steel expansion fasteners. Ceiling section of 0.55mm thickness having knurled web of 51.5mm and two flanges of 26mm each with lips of 10.5mm are then fixed to intermediate channel with the help of connecting clip and in direction perpendicular to the intermediate channel at 457mm centers. 12mm gypsum MR/FR grade Board (conforming to IS 2095 part 1 2011) is then screw fixed to ceiling section with 25mm dry wall screwed at 230mm centers. Screw fixing is done mechanically either with screw driver or drilling machine with suitable attachment. Finally the boards are to be jointed and finished so as to have a flush look which includes filling and finishing the edges of the boards with jointing compound, Joint paper tape . Cutouts For light fittings,</p>				

Sl. No	DESCRIPTION OF WORK	Qty.	Rate	Per Unit	Amount R s.
	<p>grill diffusers shall be made. Necessary cutting / providing openings in the ceiling for AC fixtures, grills, electrical fittings, or other utility services, hatch openings etc. shall be provided by the Contractor and cost of making such modifications shall be included in the price. No separate charges for cutting / providing opening will be paid. Joints between the two gypsum board, (Board placed staggered) gypsum board and wall will have suitable tape and finishes with plaster of paris so as to have crack free joints.</p> <p>The item includes providing and fixing trap door of size 600 X 1200 mm as per approved sample of Ceiling panels comprise of a powder-coated beaded steel frame with gypsum / plywood board door. Each panel features a push-latch closing mechanism with door retaining safety cable &amp; hook. Suspenders from ceiling to support the frame and trap door firmly along with necessary hilti fastner, cleats, screws, angles, packing, etc. complete work. Work complete including all type of tools, tackles, finishing etc complete as per approved sample &amp; instruction of Architect/ Client/ PMC. sample mock shall be approved from Architect/ Client. The ceiling to be completed ceiling with 3 coats of plastic emulsion paint over a 2 coats of putty and a primer coat.</p>	1600		1Sft	
5	<b>MODULAR FALSE CEILING - Daiken (Revealed type)/ equivalent make</b>				
	<p><b>Daiken (Revealed type)</b> <b>Location:</b> ME-lobby, Banking area and service areas. <b>Size:</b> 600 mm x 600 mm (tile size).</p> <p>MODULAR CEILING: Providing and fixing modular false ceiling tiles of 600 mm x 600 mm centre to centre and 13 mm thick square mineral fibre board to be fixed on frame work of Aluminium sections for suspended false ceiling consisting of Aluminium T 2" X 1 1/2" (50 mm X 40 mm) weighing 0.39 kg/m at 60 cms centre to centre and fixed with 1/2" x 1/2" (15 x 15 mm) flanges weighing 0.19 kg/m suspended on 6 mm dia. mild steel rod weighing 0.22 kg/m, fixed on wall and beams including rounding of the edges with aluminium T of 2" x 1 1/2" (50 mm x 40 mm) weighing 0.39 kg/m etc. (All aluminium sections shall be anodized/powder coated) including all labour, material, lifts etc. complete. Make -Daiken (Revealed type) or equivalent make</p>	1920		Sft	



Sl. No	DESCRIPTION OF WORK	Qty.	Rate	Per Unit	Amount R s.
6	<b>ZM TABLE</b>				
	<p>Providing a ZM table of size 8'-0" x 4'-0" and height 2'6" made of 18 mm thick MR Grade Plywood for vertical sides &amp; modesty panel. The table should have 25mm thick top. The exposed surfaces of MR Grade Plywood finished with 1 mm thick decorative laminate of approved colour &amp; all inside surfaces finished with approved colour of 0.8 mm thick decorative laminate. The Item to have 10mm thick clear float glass for table top with polished edges. The edges of the table lipped with a TW frame of size 2" x 1" and finished to desired wood effect by melamine polish after necessary surface preparation. The table to have a TW foot rest of size 3" x 1½" finished suitably.</p> <p>The table to also have key board trays made of size 2'3" x 1'0" (approx) made of 18 mm thick MR Grade IS303 (dimensions as per system installed), and sliding in MS (Mild Steel) brackets fixed below the counters &amp; tables. The surfaces of keyboard trays finished with approved colour of 1mm thick decorative laminate. All exposed edges lipped with a TW beading of size 1" x ¾" &amp; finished to desired wood effect by melamine polish after necessary surface preparation. Foot rest cum CPU stand of required length with same 18 mm Ply finished with 0.8mm thick laminate.</p> <p>50mm Dia SS wire manager, Telescopic channel of approved quality One set of 4 drawers about 450mm wide, 712.5mm high and 600mm deep to shape supported with 18mm MR ply at bottom, sides and rear. 4 nos. of drawers out of which 3 nos. of equal height and 1no. drawer at the top most of 75mm high made out of 12mm thick Com. ply finished with 1mm thick laminate at front side with necessary lipping telescopic drawer slides, locking arrangements, 100mm long brush finish SS handles, etc., complete.</p>	1		1 No.	
7	<b>ZM SIDE UNIT</b>				
	<p>Providing a side unit of size 4'0" x 1'6" x height 2'6" made of 18mm thick MR Grade IS303 for shelf, Side hung shutter in both the panels using 18mm com. ply and finished with 1mm thick laminate of approved colour and shade, including all necessary lipping, Box type hinges, locking arrangement, 100mm long C Shape SS brush finish handles, tower bolt, etc., complete. and finished with 1.0mm thick approved colour of decorative laminate on the outside &amp; inside surfaces finished with approved colour of 0.8mm thick laminate. The exposed edges lipped with TW beading of size 1' x ¾" and finished to desired wood effect by melamine polish after preparation. The unit to be complete with all accessories such as knobs, handles, lock &amp; key</p>	1		1 No.	



Sl. No	DESCRIPTION OF WORK	Qty.	Rate	Per Unit	Amount R s.
8	<b>DZM TABLE</b>				
	<p>Providing a DZM table of size 7'-0" x 3'-6" and height 2'-6" made of 18 mm thick MR Grade Plywood Ply for vertical sides &amp; modesty panel. The table should have 25mm thick top. The exposed surfaces of MR Grade Plywood Ply finished with 1 mm thick decorative laminate of approved colour &amp; all inside surfaces finished with approved colour of 0.8 mm thick decorative laminate. The Item to have 12mm thick clear float glass for table top with polished edges. The edges of the table lipped with a TW frame of size 2" x 1" and finished to desired wood effect by melamine polish after necessary surface preparation. The table to have a TW foot rest of size 3" x 1½" finished suitably.</p> <p>The table to also have key board trays made of size 2'3" x 1'0" (approx) made of 18 mm thick MR Grade IS303 (dimensions as per system installed), and sliding in MS (Mild Steel) brackets fixed below the counters &amp; tables. The surfaces of keyboard trays finished with approved colour of 1mm thick decorative laminate. All exposed edges lipped with a TW beading of size 1" x ¾" &amp; finished to desired wood effect by melamine polish after necessary surface preparation. Foot rest cum CPU stand of required length with same 18 mm Ply finished with 0.8mm thick laminate.</p> <p>50mm Dia SS wire manager, Telescopic channel of approved quality</p> <p>One set of 4 drawers about 450mm wide, 712.5mm high and 600mm deep to shape supported with 18mm MR ply at bottom, sides and rear. 4 nos. of drawers out of which 3 nos. of equal height and 1no. drawer at the top most of 75mm high made out of 12mm thick Com. ply finished with 1mm thick laminate at front side with necessary lipping telescopic drawer slides, locking arrangements, 100mm long brush finish SS handles, etc., complete.</p>	1		1 No.	
9	<b>DZM SIDE UNIT</b>				
	<p>Providing a side unit of size 3'6"x 1'6" x height 2'6" made of 18mm thick MR Grade IS303 for shelf, Side hung shutter in both the panels using 18mm com. ply and finished with 1mm thick laminate of approved colour and shade, including all necessary lipping, Box type hinges, locking arrangement, 100mm long C Shape SS brush finish handles, tower bolt, etc., complete. and finished with 1.0mm thick approved colour of decorative laminate on the outside &amp; inside surfaces finished with approved colour of 0.8mm thick laminate. The exposed edges lipped with TW beading of size 1' x ¾" and finished to desired wood effect by melamine polish after preparation. The unit to be complete with all accessories such as knobs, handles, lock &amp; key</p>	1		1 No.	



Sl. No	DESCRIPTION OF WORK	Qty.	Rate	Per Unit	Amount R s.
<b>10</b>	<b>CM &amp; Secretariat</b>				
	Providing a CM table of size 5'-0" x 2'-6" and height 2'-6" made of 18 mm thick MR Grade Plywood Ply for vertical sides & modesty panel. The table should have 25mm thick top. The exposed surfaces of MR Grade Plywood Ply finished with 1 mm thick decorative laminate of approved colour & all inside surfaces finished with approved colour of 0.8 mm thick decorative laminate. The Item to have 10mm thick clear float glass for table top with polished edges. The edges of the table lipped with a TW frame of size 2" x 1" and finished to desired wood effect by melamine polish after necessary surface preparation. The table to have a TW foot rest of size 3" x 1½" finished suitably.				
	The table to also have key board trays made of size 2'3" x 1'0" (approx) made of 18 mm thick MR Grade IS303 (dimensions as per system installed), and sliding in MS (Mild Steel) brackets fixed below the counters & tables. The surfaces of keyboard trays finished with approved colour of 1mm thick decorative laminate. All exposed edges lipped with a TW beading of size 1" x ¾" & finished to desired wood effect by melamine polish after necessary surface preparation. Foot rest cum CPU stand of required length with same 18 mm Ply finished with 0.8mm thick laminate.				
	50mm Dia SS wire manager, Telescopic channel of approved quality One set of 4 drawers about 450mm wide, 712.5mm high and 600mm deep to shape supported with 18mm MR ply at bottom, sides and rear. 4 nos. of drawers out of which 3 nos. of equal height and 1no. drawer at the top most of 75mm high made out of 12mm thick Com. ply finished with 1mm thick laminate at front side with necessary lipping telescopic drawer slides, locking arrangements, 100mm long brush finish SS handles, etc., complete.	6		1No	
<b>9</b>	<b>CM SIDE UNIT</b>				
	Providing a side unit of size 3'3" x 1'6" x height 2'6" made of 18mm thick MR Grade IS303 for shelf, Side hung shutter in both the panels using 18mm com. ply and finished with 1mm thick laminate of approved colour and shade, including all necessary lipping, Box type hinges, locking arrangement, 100mm long C Shape SS brush finish handles, tower bolt, etc., complete. and finished with 1.0mm thick approved colour of decorative laminate on the outside & inside surfaces finished with approved colour of 0.8mm thick laminate. The exposed edges lipped with TW beading of size 1' x ¾" and finished to desired wood effect by melamine polish after preparation. The unit to be complete with all accessories such as knobs, handles, lock & key	6		1 No.	



Sl. No	DESCRIPTION OF WORK	Qty.	Rate	Per Unit	Amount R s.
11	<b>Officers Workstations (Single)</b>				
	Providing a Officers table of size 4'-6" x 2'-6" and height 2'-6" made of 18 mm thick MR Grade Plywood Ply for vertical sides & modesty panel. The table should have 25mm thick top. The exposed surfaces of MR Grade Plywood Ply finished with 1 mm thick decorative laminate of approved colour & all inside surfaces finished with approved colour of 0.8 mm thick decorative laminate. The Item to have 10mm thick clear float glass for table top with polished edges. The edges of the table lipped with a TW frame of size 2" x 1" and finished to desired wood effect by melamine polish after necessary surface preparation. The table to have a TW foot rest of size 3" x 1½" finished suitably.				
	The table to also have key board trays made of size 2'3" x 1'0" (approx) made of 18 mm thick MR Grade Plywood Ply (dimensions as per system installed), and sliding in MS (Mild Steel) brackets fixed below the counters & tables. The surfaces of keyboard trays finished with approved colour of 1mm thick decorative laminate. All exposed edges lipped with a TW beading of size 1" x ¾" & finished to desired wood effect by melamine polish after necessary surface preparation. One drawer unit at top and one storage at bottom about 450mm width, 712.5mm height and 600mm deep supported with 18mm MR Grade Ply at bottom, sides and rear finished with 1mm thick laminate of approved colour and shade with necessary TW lipping, telescopic drawer slides, locking arrangements, 100mm long SS brush finish handles, Box type Hinges, etc., complete.	26		1No	
13	<b>COUNTER DIVIDER GLASS</b>				
	Supply and installation of divider glass of size 2'-6" x 1'-6" above the table top using 12mm Thick Toughened glass whereas the free corners to be curved with radius of 1" nd edges to be polished & etching. The glass to be fixed using 3 nos Heavy Duty ss Clamps/ TW Moulding and to be french polish finish.	35		Nos.	
14	<b>Roller Blinds</b>				
	The Blind system consist of a coated aluminium tube of 38 mm diameter with provision of fabric clamping. The Fabric is rolled up and down through a chain drive system with built in drive gear and an over run brake system. The side brackets are universal type suitable both for wall and ceiling mounting. The bottom end of the fabric is rolled over an oval shape aluminium tube with provision to lock the fabric.	125		1 Sft	



Sl. No	DESCRIPTION OF WORK	Qty.	Rate	Per Unit	Amount R s.
15	<b>TEXTURE PAINT</b>				
	Providing & applying Texture paint of approved colour & design .Item to include surface preparation wherever required by 2 coats of putty & single coat of primer	750		1Sft	
16	<b>CENTER TABLE</b>				
	<b>SIZE: - 450mm x 950mm</b>				
	Providing and making center tables of above mentioned size as per drawing. Table top shall consist of 12 mm. Thk.float glass with chamfered edge( bevelled edge) fitted to the frames with necessary arrangement. The base shall be made up of Steam beach wood frame as directed by the Bank / Architect. It should be with 4 Nos of 20mmx35mm for vertical members tied in X pattern with 20mm x 35mm frames at bottom and All wooden frames to be finished with melamine.	3		1No	
17	<b>LUNCH PLATFORM</b>				
	Providing and laying platform of 1'-3" to 1'-6" width (clear) and at 3'-6" height (top) above FFL. of approved 20mm thick granite with bull nosed edge. It shall be laid on MR Grade Plywood and steel L angle bracket. The platform shall be cantilevered from the wall as shown in the drawing. The edge of the platform should be double edged with half round machine polished. 9" wide 19mm thk marine ply to be provided below the lunch counter (4')for shelves for Tiffin's and kitchen items.	30		Rft	
18	<b>POOJA Unit</b>				
	Supply & installation of pooja unit of size 5'-0" x 7'-0" to a depth of 1'6" made up of 18mm thick MR Grade Plywood shelf divider .Storage unit to be given to a height 2'-6" from floor level made of 18 mm thick MR Grade Plywood closed with shutters .Top of the unit to be finished with Mandir setup to a height of 1' in 3 steps using 18mm thick MR Grade Plywood.ALL the MR Grade Plywood to be finished with 1mm thick approved colour laminate.	35		1Sft	
19	<b>SHOWCASE BOXING</b>				
	Providing and fixing Showcase Boxing to detail(app. Size 1'6"x6"x1'6"), 18mm thick MR Grade Plywood finished with 1mm laminate of approved colour and shade with necessary grooves and beading, 3 nos of intermediate Glass shelves with D brackets	3		1No	



Sl. No	DESCRIPTION OF WORK	Qty.	Rate	Per Unit	Amount R s.
20	<b>PIN-UP BOARD / SOFT BOARD</b> It is useful for the staff to pin-up the important notices, memos and Bank's related information and which needs to be visible. <b>Location:</b> On the running or sales counters table – free standing and also acting as a divider, on partitions or walls adjacent to or in front of the  <b>Material: 15 mm thick Pin-up board (soft board) with 18 mm thick. MR Grade Plywood Ply backing covered with approved coloured "Vermillion fabric supported on SS supports.</b> <b>Maintenance:</b> All surfaces should be cleaned with dry cloth/ duster daily with a soft damp cloth dipped in a mild soap solution.	120		1Sft	
21	<b>Buy Back</b> for Dismantling and taking away the existing tables, counters, partition etc complete.	1		No	
	<b>Total( Excluding GST)</b>				

**Place:**  
**Date:**

**Signature of contractor with seal**



**SCHEDULE OF QUANTITIES FOR PROPOSED INTERIOR WORKS OF ZONAL OFFICE NORTH AT INDIAN BANK  
ZONAL OFFICE 4TH FLOOR , NO:55,ETHIRAJ SALAI,EGMORE,CHENNAI-600 008**

**ELECTRICAL WORK**

Sl.No	DESCRIPTION OF WORK	Qty	Rate	Per Unit	Amount ( Rs)
<b>1</b>	<b>MAIN SWITCH</b>				
<b>1.1</b>	Providing and fixing 125A TPN MCCB 25KA (Change over switch for in suitable enclosure etc.,	1		No	
<b>1.2</b>	Providing and fixing 125A TPN MCCB 35 KA , in suitable enclosure from power main power etc.,	1		No	
<b>2</b>	<b>Main SUB PANEL BOARD</b>				
	<p>Supplying, fabricating, installation, testing and commissioning of floor mounted Panel Board made of 16G CRC sheet in welded construction along with suitable and compact cable chambers including necessary stiffeners, self supporting, modular constructions, compartmentalized pattern complete with copper bus bars, copper interconnections etc. ring main earthing with 35x 10 mm copper flat, suitable earthing of all switch gear components with 6sqmm multistranded copper flexible PVC insulated with ends terminated with suitable crimping type copper cable sockets and tinning at all tapping connections complete as required. The copper bus bar flat shall be provided for the entire length of bus chamber. The panel board shall be powder coated to Siemens grey shade after undergoing 7- tank process.</p> <p>The rate shall include the cost of providing necessary base channel for erection complete with anchor fasteners/ foundation bolt, and nuts etc., and all other connected civil works for grouting the panel. The panel shall be provided with the following:-</p> <p>Incomer :</p> <p>1 No. 125 A TP&amp;N MCCB (35KA)</p> <p>1 No. instrument panel comprising of 1 No. 0-500V 75mm square flush mounting Digital Voltmeter with built in selector switch, 1 No. 0-100 A 75mm Sq. flush mounting Digital Ammeter with built in selector switch and 200/5A cast resin CTs)</p> <p>Outgoings:-</p> <p>4 No 100A TP &amp; N MCCB ( 25 KA) for A/C DB</p> <p>1 No. 63 A TP&amp;N MCB (25KA) for ( Spare)</p> <p>1 set 100 A capacity copper bus bars with 4 nos 35mm x 10mm copper flats for 3 phases and neutral duly insulated with PVC colour sleeve (heat shrink) mounted on SMC/DMC base block.</p>	1		Set	



SI.No	DESCRIPTION OF WORK	Qty	Rate	Per Unit	Amount (Rs)
3	<p><b>APFC PANEL</b>  <b>Supply, Installation, Testing and Commissioning (S I T C) of wall mounted 15 KVAR six stage Automatic Power Factor Correction (APFCR) Panel</b> and powder coated made of 16G CRC sheet in welded construction along with suitable and compact cable chambers including necessary stiffeners, self supporting, The rate shall include the cost of providing necessary base channel for erection complete with anchor fasteners/ bolt, and nuts etc., and all other connected civil works for grouting the panel. The panel has to be vermin and dust proof. The panel shall be provided with the following:-</p> <p>1No.63A,TP, MCB as incomer</p> <p>1 no power factor correction relay, 1 Set of phase indicating lamps, 1 set of Auto/Manual switch, contactors &amp; MCB of suitable ratings along with the following outgoings:-</p> <p>4 Nos of 5.0 KVAR capacitor</p> <p>4 Nos of 2.5 KVAR capacitor</p> <p>6 sets of on/off push button with indicating lamp.</p> <p>ON/OFF/TRIP indication lamp for each capacitor</p> <p>1 Set, RYB, indicating lamps with resistors and fuses for incomer.</p> <p>The rate includes providing 100/5A CI-1, 5VA rated CT at EB mains and wiring from the CT to APFCR panel using 2 runs of 2.5 sqmm copper conductor wires in suitable PVC conduit on wall with connections.</p>	1.00		No	
4	<b>DISTURBUTION BOARDS</b>				
a	<p><b>Main Distribution Board : S I T C of IP:43 6way VTPN With MCCB &amp; MCB VDB with following., phase seggregated, IP-43, double metal door DB with complete set of accessories</b> including bus bars, copper interconnections, dummies, etc. The DB shall have an incomer, sub- incomer and outgoing with double metal door, copper bus bars etc. The DB should be installed on the surface of the wall using MS angle frame. All MCCBs must be "D" curve. The rates shall include the cost of all necessary civil works. All the above materials shall be as per the latest ISI standards.</p> <p><b>Incomer:</b>                      1 no. 100A 4P MCCB</p> <p><b>Outgoing:</b>                      3 nos. 63A TP MCB(PDB,UPS DB,SPARE)                      2 nos. 63 A TP MCB (LDB,SPARE)</p> <p><b>Location : UPS / Electrical room</b></p>	1.0		No	



SI.No	DESCRIPTION OF WORK	Qty	Rate	Per Unit	Amount (Rs)
<b>b</b>	<b>AC DB</b>				
	<p>Supply, installation, testing and commissioning of wall mounted Vertical DB type 4 way 3 phase, Distribution board with double door concealed in wall and fabricated out of 16 Swg CRCA and powder coated to Siemens gray shade after undergoing 7- tank process. The rate shall include the cost of chasing the wall and concealing the same including making good the surfaces smooth to receive the putty and painting. The DB shall comprise of the following:-</p> <p>1 No. 100A 4P MCB as incomer. out going each with 15nos 63A DP MCB</p>	1		No	
<b>c</b>	<b>LDB</b>				
	<p>Supply, installation, testing and commissioning of double door, wall mounting type, 6 way 3 phase, phase segregated Distribution board (LDB - 1) fabricated out of 16 G CRCA sheet steel, powder coated and with 10KA type 'C' MCB's. The rate shall include the cost of chasing the wall and concealing the same including making good the surface smooth to receive the patty and painting. The DB shall comprising the followings.</p> <p>1 No. 40A 4P (25KA) MCB as incomer. 3 sets of out going each with 1 No.40A DP ELCB+MCB(100mA) and 24 nos 10/6A SP MCB as outgoing with necessary interconnection copper wires etc.,</p>	1		No	
<b>d</b>	<p><b>UPS MAIN DB:</b> <b>S I T C of 8 way, SPN, IP-43, metal door DB with complete set of accessories</b> including bus bars, copper interconnections, dummies, etc. All MCBs must be "D" curve. All the above materials shall be as per the latest ISI standards. The rates shall include the cost of all necessary civil works like chasing the wall, concealing the DB, leveling and making good of the surfaces to receive the putty and painting. All the above materials shall be as per the latest ISI standards. The DB shall comprise of the following:- <b>Incomer:</b> 1 no. 40A DP MCB <b>Outgoing:</b> 3 nos. 32 DP MCB <b>Location : At UPS Room</b></p>	1.0		1No	



SI.No	DESCRIPTION OF WORK	Qty	Rate	Per Unit	Amount (Rs)
<b>e</b>	<b>UPS DB - 1</b>				
	<p>Supply, installtion, testing and commissioing of wall mounted powder coated 12 way single phase Distribution board (as UPS DB 1) with double door concealed in wall and fabricated out of 16 Swg CRCA and powder coated. The rate shall include the cost of chasing the wall and concealing the same including making good the surfcaes smooth to receive the putty and painting. The DB shall comprise of the following:-</p> <p>1 no 32A DP MCB as incomer 10 Nos. 10/6A SP MCB as outgoing for computer nodes with necessary interconnection copper bus bars etc.,</p>	1		Set	
<b>f</b>	<b>UPS DB - 2</b>				
	<p>Supply, installtion, testing and commissioing of wall mounted powder coated 8 way single phase Distribution board (as UPS DB 2) with double door concealed in wall and fabricated out of 16 Swg CRCA and powder coated. The rate shall include the cost of chasing the wall and concealing the same including making good the surfcaes smooth to receive the putty and painting. The DB shall comprise of the following:-</p> <p>1 no 32A DP MCB as incomer 6 Nos. 10/6A SP MCB as outgoing for computer nodes with necessary interconnection copper bus bars etc.,</p>	1		Set	
<b>g</b>	<b>PDB - 2 ( Main Raw Power DB )</b>				
	<p>Supply, installation, testing and commissioing of wall mounted cubicle type 4way 3 phase, Distribution board (PDB - 1) with double door concealed in wall and fabricated out of 16 Swg CRCA and powder coated to Siemens gray shade after undergoing 7- tank process. The rate shall include the cost of chasing the wall and concealing the same including making good the surfaces smooth to receive the putty and painting. The DB shall comprise of the following:-</p> <p>1 No. 63A 4P MCB as incomer. 2 nos 40A TP MCB as outgoing with necessary interconnection copper wires etc.,</p>	1		1No	

SI.No	DESCRIPTION OF WORK	Qty	Rate	Per Unit	Amount (Rs)
<b>h</b>	<b>POWER DB - 1</b>				
	Supply, installtion, testing and commissioing of wall mounted powder coated 12 way single phase Distribution board (as Power DB 1) with double door concealed in wall and fabricated out of 16 Swg CRCA and powder coated. The rate shall include the cost of chasing the wall and concealing the same including making good the surfcaes smooth to receive the putty and painting. The DB shall comprise of the following:-  1 no 32A TP MCB as incomer 9 Nos. 10/6A SP MCB as outgoing for computer nodes with necessary interconnection copper bus bars etc.,	1		Set	
<b>i</b>	<b>POWER DB - 2</b>				
	Supply, installtion, testing and commissioing of wall mounted powder coated 8 way single phase Distribution board (as Power DB 2) with double door concealed in wall and fabricated out of 16 Swg CRCA and powder coated. The rate shall include the cost of chasing the wall and concealing the same including making good the surfcaes smooth to receive the putty and painting. The DB shall comprise of the following:-  1 no 32A TP MCB as incomer 5 Nos. 10/6A SP MCB as outgoing for computer nodes with necessary interconnection copper bus bars etc.,	1		Set	
<b>j</b>	<b>BRANCH POWER MASTER CONTROLS</b> <b>S I T C of 63A 4P 25 KA MCB housed in fabricated metal enclosure near the main door of branch LDB,PDB,ELDB for master control.</b> The rates shall include the cost of all neccessary civil works like chasing the wall, concealing the metal enclosures, leveling and making good of the surfaces to receive the putty and painting. All the above materials shall be as per the latest ISI standards.	1		no	
<b>k</b>	Supply and Installation of 63A FP MCB housed in manufacturer's powder coated MS box for 7.5/10 KVA UPS input control	2		No	
<b>l</b>	Supply & installation of 63A Automatic Phase Selector Switch with all interconnections etc.(3 phase in , Single phase out)	2.0		No	

SI.No	DESCRIPTION OF WORK	Qty	Rate	Per Unit	Amount (Rs)
<b>5</b>	<b>Cables and Cable Terminations</b>				
5.1	Supply & laying of 4 core 50 sq.mm aluminium armoured LT UG XLPE cable laid above the ground and clamping the same at adequate intervals to the slab/beam/wall etc. from 200A EB Main FSU switch, to COS to Main Panel along with 2 runs of 10 SWG copper wire for earthing.	75		Mt	
5.2	Supply & laying of 4 core 25 sq.mm copper Ar cable laid above the ground and clamping the same at adequate intervals to the slab/beam/wall from main panel to Main on the suitable PVC pipe with 2 runs of 2 Rx 10 sqmm green wire for earthing.	100		Mt	
5.3	Supply & Laying of 4 runs of 10 sqmm plus 2 runs of 4 sqmm copper conductor wire drawn through suitable dia pvc conduit ect..	80		Mt	
5.4	Supply & Laying of 4 runs of 6 sqmm plus 1 runs of 4 sqmm copper conductor wire drawn through suitable dia pvc conduit ect..	100		Mt	
5.5	Supply & Laying of 2 runs of 6 sqmm plus 1 runs of 4 sqmm copper conductor wire drawn through suitable dia pvc conduit ect..	50		Mt	
6	Providing end terminations for the above cables using double compression brass gland and copper crimping socket including earthing the cable glands with copper earth clamp and connecting the same to earth along with 14SWG copper earth wire for the following cables:-				
6.1	for 4 core 75 sqmm aluminium armoured LT UG cable.	6		No	
6.2	for 4core 25 sqmm aluminium armoured LT UG cable.	4		No	
6.3	Supply and fixing water proofing box with 63A DP MCB with accessories	10		No	
<b>7</b>	<b>Lighting Wiring ( for Lighting)</b>				
	Supply and installation of 2R 2.5 + 1 R 1.5 sqmm PVC insulated multi strand FRLS copper wire drawn in 20/25mm dia pvc conduit to be laid, partitions etc complete with all accessories including providing necessary marking of circuits with ferrules.	450		Mt	
<b>8</b>	<b>Raw Power Wiring</b>				
	Supply and installation of 2R 2.5 + 1 R 1.5 sqmm PVC insulated multi strand FRLS copper wire drawn in 20/25mm dia pvc conduit to be laid, partitions etc complete with all accessories including providing necessary marking of circuits with ferrules.	450		Mt	



SI.No	DESCRIPTION OF WORK	Qty	Rate	Per Unit	Amount (Rs)
<b>9</b>	<b>UPS Wiring</b>				
	Supply and installation of 2R 2.5 + 1 R 1.5 sqmm PVC insulated multi strand FRLS copper wire drawn in 20/25mm dia pvc conduit to be laid, partitions etc complete with all accessories including providing necessary marking of circuits with ferrules.	600		Mt	
<b>10</b>	<b>Lighting</b>				
	Wiring of light, fan points				
	Providing and laying point wiring for lights, fans, exhaust fans, 6A plug points etc., partly laid in surface conduits (above false ceiling) and necessarily concealed in recessed conduits in wall / partition / vertical drops, etc with 3 runs of 1.5 Sq.mm PVC insulated Flame Retardant Low smoke Cable (FRLS) with copper conductor in 20/25 mm dia. PVC conduit pipe 16G thick as per IS 9537 Part II including all accessories like base clamp, bends, couplings, junction boxes, rubber bushes, etc., along with supplying and fixing 6A modular type switches of approved make with front plate for control housed in metal boxes recessed in wall/partitions made from electro plated sheet metal box of approved make including giving connections complete as required. The rate shall include the cost of providing and fixing necessary threaded MS powder coated ceiling suspended pipe/rod along with slotted U channel including securing the same with clamp / cable tie as required wherever required.				
<b>10.1</b>	1 light controlled by one switch.	50		No	
<b>10.2</b>	2 light controlled by one switch.	25		No	
<b>10.3</b>	ceiling fan point along with 100W step type electronic regulator.	6		No	
<b>10.4</b>	Wall fan point with 5A socket	15		No	
<b>10.5</b>	Same as above item but for exhaust fan excluding regulator.	8		No	
<b>10.6</b>	5 A wall plug points in switch board	15		1No	
<b>10.7</b>	Wiring for call bell points with modular bell push, modular type buzzer, with indicator and reset button.	2		No	
<b>11</b>	<b>Supply and fixing of Light fittings and Fans</b>				
	Supply and Installation of following light fittings complete with all accessories like and also the necessary mounting accessories				

SI.No	DESCRIPTION OF WORK	Qty	Rate	Per Unit	Amount (Rs)
11.1	Supply and installation including assembling testing and commissioning of 600 x 600 mm modular recess mounted with 38W LED and suspended from ceiling either with 20mm dia 16 swg thick MS conduit ( ISI marked) down rods ( 0.8mt long approx) and heavy duty ball and sockets sealing plate, check nuts etc or with 8 SWG GI chain and giving connections.	40		No	
11.2	Supply and fixing of fixing recess mounted 15Watts LED downlight to be mounted on false ceiling.	40		No	
11.3	Supply and fixing of 230mm dia light duty exhaust fan with auto gravity louvre.	4		No	
11.4	Supply and fixing of 1x20 (4') Watts LED Tube light fixture along with electronic ballast and lamp.	20		No	
11.5	Supply and fixing of 48" sweep ceiling Fan including standard down rod.	6		No	
11.6	Supply & Installation of 12" Wall mounted fan	15		P/No	
11.7	Providing & Testing of LED Strip light (266 lumen per feet) with adaptor and proper nesesary fixing.	100		RM	
<b>12</b>	<b>Sound systems</b>				
12.1	Supplying and laying of 2Core 24/0.2 mm ATC Twin Twisted Speaker wire within the 20mm dia PVC conduit including giving connections.	300		Mt	
12.2	Supply & Installation of Philips / Bosch make 6W False Ceiling mounted speaker with necessary accessories including line matching transformer.	10		Nos	
12.3	Providing and fixing resistance type volume control knob along with modular front plate housed in the manufacturers zinc passivated MS box with front plate including concealing the same in the wall / partition and making good the surfaces smooth.	5		Nos	
12.4	Providing amplifier of 60 Watts Ahuja make with CD player with pen drive option for play light /instrumental music	1		Set	
<b>13</b>	<b>Telephone cabling and Data</b>				
13.1	Supply and laying of 0.6mm dia copper conductor, PVC insulated 2 pair CAT 05 CABLE telephone cable on the PVC conduit.	800		Mt	
13.2	Supply and installation of modular type single RJ-11cat 05 TYPE telephone socket housed in the manufacturers zinc passivated MS box with front plate. i/o TYPE	36		No	



SI.No	DESCRIPTION OF WORK	Qty	Rate	Per Unit	Amount (Rs)
13.3	Supply and laying 20 pair krone connector housed in heavy duty metal/ABS plastic mould with suitable locking arrangements.	2		No	
14	Supplying and fixing 3Nos 6 A shuttered socket outlet controlled by 2 Nos10A SP switch with front plate housed in a suitable elctro plated sheet metal box of approved make box recessed in wall for UPS	40		Nos	
15	Supplying and fixing 1Nos 6 A controlled by 1No 6 A switch shuttered socket outlet controlled by 2 Nos10A SP switch with front plate housed in a suitable elctro plated sheet metal box of approved make box recessed in wall for RAW	38		Nos	
16	Supply and installation of 2 nos 16A 5-pin socket with 2 nos of 16A modular switches housed in MS fabricated box to be concealed in wall/ partition for server and line printer.	10		No	
17	Supply and fixing 20A modular master double pole switch with front plate housed in suitable zinc passivated metal box to be fixed in partitions or concealed in walls.	40		No	
18	Supply and installation of raceways Strength: Heavy Duty. Thicknesses – , 2.0 mm. ,300 mm Finishes: MS, Hot dip galvanized including all civil works complete	100		Mtr	
19	<b>Earthing</b>				
a	Supply, installation, testing and commissioning of earth electrode as per IS 3043 ( <b>to be connected to UPS neutral only</b> ) using 600x600x3mm copper plate fitted with 2 runs of 25x3mm copper flat rivetted to the plate using copper rivets with a link on top for tapping connections including all accessories like 40mm dia B class GI watering pipe 2.5m long with funnel. The electrode and pipe shall be buried to the 2.5m depth with alternate layers of salt and charcoal. The rate shall include the cost of proving 450x450x300mm brick masonry chamber covered with removable FRC cover with holes to receive water along with RCC outer frame.	2		No	
b	Supply, installation, testing and commissioning of cast iron earth electrode as per IS 3043 using 100mm dia x 5/6mm thick cast iron pipe 3.0m long with funnel. The pipe shall be buried to the 3m depth with alternate layers of salt and charcoal. The rate shall include the cost of proving 450x450x300mm brick masonry chamber covered with removable FRC cover with holes to receive water along with RCC outer frame.	1		No	

SI.No	DESCRIPTION OF WORK	Qty	Rate	Per Unit	Amount (Rs)
c	Supply and laying of 1R 10 Sqmm PVC insulated copper wire drawn in 25mm dia PVC pipe from plate earth electrodes to UPS-1,2 earth points and terminating both the ends with proper crimping type copper sockets to the earth links.The conduit will be partly underground and partly clamped on wall.	80		Mt	
d	Supply & Laying of 8SWG copper Wire for earthing Main panel board, Sub Main Panel Board, APFC panel and 125A Change Over Switch with ends terminated with copper cable sockets. The rate shall include the cost of providing and fixing earth bus using 25x3mm copper flat with holes for tapping connections with brass bolts and nuts.	100		Mtr	
II	<b>DATA CABLING WORKS (Structured)</b>				
1	Supplying and laying UTP CAT 6 (Systimax) through the 25mm thick PVC pipes / Raceways for data.	1800		Mt	
2	Supply and installation of CAT 06 -RJ45 female jack (single plate).	40		Nos	
3	Installation and connecting of 24 port switch 1000 Mbps D link make	2		Nos	
4	supply and fixing of 24 port jack panel	2		P/No	
5	Supply and installation of 12U closed rack.	1		Nos	
6	Supply and fixing 1 metre mounting cord (Systimax).	40		Nos	
7	Supply and fixing 2 metre mounting cord (Systimax).	40		Nos	
8	Termination and integration charges per set of nodes (Two ends) and testing, certification (Systimax) and documentation of all works.	40		Nos	
III	<b>INVERTER WIRING &amp; INSTALLATION</b>				
a	Supply, installtion, testing and commissioing of wall mounted powder coated 8 way single phase Distribution board (as Inverter DB) with double door concealed in wall and fabricated out of 16 Swg CRCA and powder coated. The rate shall include the cost of chasing the wall and concealing the same including making good the surfcaes smooth to receive the putty and painting. The DB shall comprise of the following:-  1 no 32A DP MCB as incomer 6 Nos. 10/6A SP MCB as outgoing for computer nodes with necessary interconnection copper bus bars etc.,	1		Set	
b	Supply & laying 1runs of 2.5Sqmm copper wire in suitable PVC conduits ( ISI make) 18mm dia including all civil works complete	375		1Rm	



SI.No	DESCRIPTION OF WORK	Qty	Rate	Per Unit	Amount (Rs)
c	Supply & fixing 15Amps switch & socket (modular type) as per specifications complete	2		1No	
d	Supply and laying 3 runs of 4 Sqmm copper wire in suitable PVC conduits (ISI make) 18mm dia including all civil works complete	100		1Rm	
IV	<b>Buy Back</b> for dismantlin & taking away the existing light fitting ,wire,DB 's swiches & sockets etc.	1		No	
<b>TOTAL(Excluding GST)</b>					

**Place:**  
**Date:**

**Signature of contractor with seal**



**SCHEDULE OF QUANTITIES FOR PROPOSED INTERIOR WORKS OF ZONAL OFFICE NORTH AT INDIAN BANK ZONAL OFFICE 4TH FLOOR , NO:55,ETHIRAJ SALAI,EGMORE,CHENNAI-600 008**

**AIR CONTIONING WORK**

Sl.No	DESCRIPTION OF WORK	QTY	RATE	UNIT	AMOUNT (Rs)
1	<p>Supplying, installation,testing and commissioning of <b>3 - Star rated Hi-wall split Inveter airconditioner of 1.0 TR capacity ( Blue Star Make )</b> with On Off Timer along with wireless remote controller including providing and laying the standard length of 3m copper, electrical and 25mm dia cPVC drain piping including Initial refrigerant charge suitable for 10 Mtrs distance between IDU and ODU along with drilling the holes and packing and making good the damaged surfaces good comprising of the following</p> <p>i) Indoor unit consisting of evaporator coil, ( <b>Copper Make</b> ) blower fan with motor, filters, insulated drain pan etc</p> <p>ii) Outdoor unit consisting of hermatically sealed Rotary Compressor to operate on 230 V, Single Phase, 50 Hz AC Supply, Anti Corrosive Coated Condensor Coil ( <b>Copper Make</b> ) with fan and motor, interconnecting refrigeration piping, starters/controls/cutouts/relays etc., mounted inside a powder coated sheet metal cabinet duly treated for corrosion protection.including control cable connction between IDU to ODU including stands <b>The rate shall be inclusive of MS stands as per vendor specifications to mount the out door units.</b></p>	2		1No	
2	Supply, installation, testing and commissioning of 4 way cassette Air conditioning units( <b>single phase R-32 Gas</b> )(Blue Star, make) of capacity <b>2.00 TR</b> with copper condensor, coil and cordless remote etc, including minor civil works related to AC.	3		Nos	
3	Supply, installation, testing and commissioning of 4 way cassette Air conditioning units( <b>single phase R-32 Gas</b> )(Blue Star, make) of capacity <b>3.00 TR</b> with copper condensor, coil and cordless remote etc, including minor civil works related to AC.	4		Nos	
4	Supplying, installation, of copper piping 5/8" dia for suction line and 3/8" for liquid line including all civil works complete./ Scaffolding.	180		RMT	
5	Charges for providing additional copper pipes (one circuit) for the above split units with necessary insulation and with adequate pvc insulated copper wire from indoor to outdoor units concealed and taken through beyond the standard 4m length.	50		Rmt	



Sl.No	DESCRIPTION OF WORK	QTY	RATE	UNIT	AMOUNT (Rs)
6	Supply, installation, testing and commissioning of wall mounting 4 KVA stabilizers ( <b>V- Guard make</b> ) for 1Tr Hi-Wall Split Air Conditioning units with input voltage range of 170-270 Volts and output 220 +/- 10% as required	2		Each	
7	Charges for providing additional 25mm dia CPVC drain pipe concealed / surface mounted and taken through wall/partition including all civil works./Scaffolding	450		RMT	
8	Supply & installation of Communication cable from indoor to outdoor	250		RMT	
9	Supply & installation of MS stands of size depth 1'-6" to hold the outdoor units cassette air-conditioners at terrace level. The stands to be finished with red oxide coating and 2 coats of synthetic enamel paint over a primer coat the rate shall be inclusive of scaffolding, civil & all related works complete.	400		Kg	
10	S & I Timer Switch with Contactor (For AC)-25/32 A	1		P/No	
11	<b>Buy Back</b> for dismantling & taking away the existing AC's ,Ducts ect ccomplete	1		Nos	
<b>TOTAL(Excluding GST)</b>					

**Place:**  
**Date:**

**Signature of contractor with seal**



## B-SPECIALISED VERTICALS RAPC,MAPC & RAC

SCHEDULE OF QUANTITIES FOR PROPOSED INTERIOR WORKS OF RAC,MAPC & RAPC (Right Wing) AT INDIAN BANK ZONAL OFFICE 4TH FLOOR , NO:55, ETHIRAJ SALAI, EGMORE, CHENNAI-600 008					
CIVIL WORK					
Sl.No	Description of Items	Qty	Rate	Per Unit	Amount ( Rs)
<b>A</b>	<b>DISMANTLING</b>				
<b>1</b>	<b>Dismantling of floor</b>				
	Dismantling marble, granite, kota, marble mosaic, ceramic tile flooring & dado including skirting and excavation up to slab in plinth wherever required, etc. In a manner which facilitates laying of new flooring without undue extra expense. <b>The rate shall include removal of debris from site.</b> The work shall also involve removal of all water and waste lines including sanitary fittings, GI pipes, etc complete.	3050		1Sqft	
<b>2</b>	Dismantling the existing window of sizes 4'-0" x 4'-0" along with the Grills taking away from the site	1		1No	
<b>B</b>	<b>BRICKWORK &amp; CONCRETE</b>				
<b>3</b>	<b>9" Brick Work</b> :Providing and constructing 9" thick brick masonry with C.M 1:5 of approved quality bricks of standard size, with all necessary fixing accessories, arrangements and etc. Brick wall shall be properly embedded and inserted on the existing walls and columns. Cost include wall cutting for laying the new brickwall into the existing structure, curing, levelling, wastages, transport, loading, cleaning the area time to time, unloading charges, tools, labours, scaffolding, lead & lift, materials and etc. Complete at all height. Complete as per instructions of the Architect. <b>(The rate shall be inclusive of MS pipe scaffolding to be erected as per work specified &amp; prevailing standards)</b>	90		1Sqft	
<b>4</b>	<b>4.5" Brick Work</b> :Providing and constructing 4.5" thick brick masonry with C.M 1:5 of approved quality bricks of standard size, with all necessary fixing accessories, arrangements and etc. Brick wall shall be properly embedded and inserted on the existing walls and columns. at every 4th course or 2 nos of 6 mm dia MS round rods at every 4th course embedded in CM Cost include wall cutting for laying the new brickwall into the existing structure, curing, levelling, wastages, transport, loading, cleaning the area time to time, unloading charges, tools, labours, scaffolding <b>(The rate shall be inclusive of MS pipe scaffolding to be erected as per work specified &amp; prevailing standards)</b>	90		1Sqft	



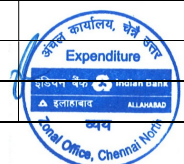
Sl.No	DESCRIPTION OF WORK	QTY	RATE	UNIT	AMOUNT (Rs)
5	<b>Plastering-</b> Providing and Plastering the new brick works in C.M. 1:4 ( 1 Cement 4 sand ) with thickness varying from 11.6mm to 19mm at all heights with all accessories, arrangements and etc. Rates to include cost of all materials, labour, transport, loading, unloading charges, cleaning the area time to time, scaffolding, hire charges, tools, lead & lift to all floors, curing and completion the work in all respects. Complete as per instructions of the Architect. <b>(The rate shall be inclusive of MS pipe scaffolding to be erected as per work specified &amp; prevailing standards)</b>	350		1Sqft	
6	<b>RCC LINTEL(4'6"x4.5"x9")</b> - Providing and laying RCC Lintel Beam in 1:1.5:3 using 20mm size blue metal, placing in position compacting, trawelling, ramming and curing rate include cost of all labour materials necessary tools and curing. Rate shall include cost of supplying steel(4 nos #10,8mm stirrups) fabricating and placing in position of steel reinforcement. Cost include necessary shuttering, materials, tools, lead & lift, loading, unloading charges, transport, equipments, scaffolding, hire charges, centering and form work. and etc., Complete in all standard and specifications. Complete as per drawings and instructions of the Architect.	2		No	
7	Providing and laying RCC slab in 1:1.5:3 using 20mm size blue metal, placing in position compacting, trawelling, ramming and curing rate include cost of all labour materials necessary tools and curing. Rate include cost of supplying steel(10mm for main ,8mm for distribution along the length & width) fabricating and placing in position of steel reinforcement. Cost include necessary cut outs for placing the washbasin. <b>The slab to be finished with 20mm thick Black granite top and fascia with prooper necessary cutouts for the fixing of wahbasin.</b>	30		1 Sft	
<b>C</b>	<b>JOINERY</b>				
8	<b>WPC Doors with frames for toilet</b> - Supplying and fixing 30mm Solid core WPC door to be fixed WPC door frames with all necessary fixing accessories, arrangements etc. Door size 761.6mm/900mm x 2135mm,. The Door to be finished with 1mm thick approved Waterproof laminate on outside & 1coat wood primer, 2coats of enamel paint on Other side of door of approved colour.Cost include of necessary SS hardwares Complete as per instructions of the architect /bank engineer	1		No	



Sl.No	DESCRIPTION OF WORK	QTY	RATE	UNIT	AMOUNT (Rs)
9	Supply & installation of UPVC Ventilator with provision for exhaust fan of 9" of approved manufacture & Sections(DIMEX/Fenesta) etc.(The rate shall be inclusive of MS pipe scaffolding to be erected as per work specified & prevailing standards)	3		1Sqft	
<b>D</b>	<b>WATERPROOFING WORK</b>				
10	Water Proofing Toilet: Providing and water proofing as under- Prepare the surface of Toilet floor and walls upto 450mm height applying Fosroc Liquid applied cement based waterproofing systems Brushbond Elastometric acrylic modified cementitious coating for concrete and masonry surface in 2 coats as per manufacturer specifications. Plastering with cm 1:3, 20 mm thick mixed with water proof admixture of fosroc conplast or any suitable admixture as per manufacturer specification including rounding off junction of vertical and horizontal surface.  Complete complying with standard specifications and as directed by architect. Cost include all accessories like wastages, transports, loading, unloading charges, chipping the existing plastering, labours, materials, tools, lead, lift, curing, all taxes & duties, approved water proofing compound and etc. Measurement shall be measured in applied area only in SFT. Pond test for min 48 hrs to be carried out. Warrenty of 5 years to be given	25		1Sft	
11	Supply and filling brick jelly concrete using best quality broken brick jelly of 20 mm of using 1:5 Cement mortar , curing, finishing. as required as per site, after completing plumbing lines, water proofing platering etc. Complete as per instructions of the architect /bank engineer.	15		1Cft	
<b>E</b>	<b>TILING WORK</b>				
12	<b>TOILET GLAZED WALL TILE-</b> Supplying and fixing of Glazed wall tiles of size (300mm x 450mm) of approved colour, design and pattern shall be fixed with 11.6mm thick cement paste for base course and applied over the existing wall, fixing in position with neat line and level and pointing with white cement mixed with colouring pigments and etc. Corner shall be finished with PVC beading of approved size. Cost include wastages, cutting, tools, transport, lead, lift, curing, cleaning the area time to time, loading, unloading, materials and etc. Complete as per instructions of the Architect.(Basic rate Rs.50/Sft after discount)	135		1Sft	



Sl.No	DESCRIPTION OF WORK	QTY	RATE	UNIT	AMOUNT (Rs)
13	<b>ANTI SKID TILES FINISH IN TOILET-</b> Supplying and fixing of Anti-Skid Toilet floor tile of size (300mm x 300mm) of approved colour, design and pattern shall be laid over 20mm thick cement mortar 1:3 (One cement and Three sand) base mortar, laying in position, slope for water drain flow and pointing with white cement mixed with colouring pigments etc. Cost include wastages, cutting, tools, lead, lift, transport, curing, cleaning the area time to time, loading, unloading, materials and etc. Complete as per instructions of the Architect. (Basic rate Rs.45/Sft after discount)	25		1Sft	
14	<b>VITRIFIED FLOORING</b> Providing and fixing VITRIFIED Tiles 600mmx1200mm of approved make, shade and pattern as approved by Bank/ Architect. In CM 1:4 in proper line and level with out spacers for maintaining the grid lines. Rate shall be inclusive of providing joint filling compound of the same shade of the tiles and including pop covering on the new flooring for the protection of tiles with base covering plastic. Including skirting of 4" height.(Rate not less than Rs.75/Sft after discount)	3400		Sft	
<b>F</b>	<b>PLUMBING</b>				
15	<b>PVC SANITARY PIPES-</b> Providing and fixing PVC pipes fixed for toilet Water line internal & external ,waste and sewage line fixing in position and connect to the existing plumbing line or nearest manhole chamber with all necessary fixing accessories, arrangements and etc. Cost include cutting wall or concrete surface fixing to walls or brackets using all types of MS clamps, core cutting if any making joints using solvent cement solution, making grooves in masonry to conceal the pipes, restoring damaged portions with CM 1:4 and jelly, to their original condition, packing work and necessary slope, all specials like tee joint, reducer, door elbow, door tee, "u" bend for water seal and etc., conducting leak test in all floors heights and cart away the debris from the site, all necessary fixing accessories such as civil works, tools, materials, cutting, fittings, scaffolding, labours, transport, loading, unloading charges, lead & lift to all floors and etc. Complete as per instructions of the Architect.				
a	As above specification for PVC 75mm dia (6 kg/cm <sup>2</sup> )	20		RM	
b	110mm dia(6Kg/Cm <sup>2</sup> )	15		RM	
c	25mm dia	80		RM	
d	32mm dia	40		RM	



Sl.No	DESCRIPTION OF WORK	QTY	RATE	UNIT	AMOUNT (Rs)
<b>G</b>	<b>SANITARY FITTINGS</b>				
<b>16</b>	<b>EUROPEAN WATER CLOSET-</b> Supplying and fixing approved make <b>Wall hung European Water Closet (EWC) with Concealed Water tank</b> fixing in wall dado including all the necessary work to conceal the water tank, including flushing buttons, erection of Brick wall to conceal the tank all materials, labour necessary accessories etc complete Parryware or Equivalent	1		1No	
<b>17</b>	<b>UNDER COUNTER BASIN:</b> Providing and fixing of Under Counter Basin size 380mm x 490mm including necessary fixing accessories and arrangements like RCC slab with black granite top and front facia , Connection hose 610mm length, angular stop cock, waste coupling, waste pipe etc., complete in all standards. Cost include all necessary fixing accessories such as tools, materials, labours, transport, loading, unloading charges and etc. Complete as per instructions of the Architect/bank engineer.	1		1No	
<b>18</b>	Supplying and fixing the Two way bib cock and wall flange with all necessary fixing accessories, arrangements and etc. Complete as per instructions of the Architect. Make: Parryware or Equivalent	1		1No	
<b>19</b>	Supplying and fixing the Health Faucet with wall hook and long flexible hose with all necessary fixing accessories, arrangements and etc. Cost include tools, materials, hardwares, wastages, lead, lift and etc. Complete as per instructions of the Architect. Make: Parryware or Equivalent	1		1No	
<b>20</b>	<b>FLOOR TRAP:</b> Supplying and Fixing position PVC floor trap with Best stainless steel gratings of approved brand and quality of size 110mm dia inlet, 75mm and 50mm dia outlet with all necessary fixing accessories, arrangements and etc. Cost include labour, tools, materials, lead, lift, removing the existing floor trap, cutting the floor slab, loading, unloading and etc. Complete as per instructions of the Architect.	2		1No	
<b>21</b>	Supplying and fixing 15mm CP pillar cock for wash basin. Parryware or equivalent make with all necessary accessories, teflon tape, flange etc complete	1		1No	
<b>22</b>	Supplying and fixing 15mm CP angle valve with CP connection Parryware or equivalent make	5		1No	



Sl.No	DESCRIPTION OF WORK	QTY	RATE	UNIT	AMOUNT (Rs)
23	Supplying and fixing chromium plated towel rod of approved make 20mm dia, 600mm long with chromium plated concealed brackets fixing to wall dado using suitable size non-corrosive screws, teak wood plugs etc. complete.	2		1No	
24	Supplying and fixing of 37x18x8 Bowl Sink with Drain Board stainless fixed to wall with GI L clamp with all necessary accessories, teflon tape, flange etc complete	1		1No	
25	Supplying and fixing 15mm CP Swan neck tap for sink. with all necessary accessories, teflon tape, flange etc complete	1		1No	
26	Supplying and fixing chromium plated Coat Hook of approved make	1		1No	
27	Supplying and fixing 6mm thick, <b>600x1800 mm</b> approved make clear mirror made out of SS Stud and 12mm thick BWR plywood back and finished neatly. Rate should be inclusive of all necessary fixtures and fittings.	1		1No	
<b>H</b>	<b>PAINTING WORKS</b>				
29	Providing & applying Premium Emulsion paint of shade in minimum 3 coats including 2coats of putty and 1 coat of primer, filling up of "V" cracks with epoxy expandable putty to required depths, making good weak plastered / unplastered surfaces with cement plaster wherever required. Item to include Plaster of Paris, primer, palti & making good existing surface to receive new paint including cleaning on completion of painting work etc. complete in all respects. <b>(The rate shall be inclusive of MS pipe scaffolding to be erected as per work specified &amp; prevailing standards)</b>	4500		1 Sft	
30	Providing & Applying 2 coats of approved colour of enamel over a 1 coat of primer after necessary surface preparation.	300		1 Sft	
31	Providing 9" Dia holes in UPS by core cutting method	2		1No	
<b>Total</b>					

Place:  
Date:

Signature of contractor with seal



<b>SCHEDULE OF QUANTITIES FOR PROPOSED INTERIOR WORKS OF RAC,MAPC &amp; RAPC (Right Wing) AT INDIAN BANK ZONAL OFFICE 4TH FLOOR , NO:55, ETHIRAJ SALAI, EGMORE, CHENNAI-600 008</b>					
<b>FURNISHING WORK</b>					
Sl. No	Description of Item	Qty.	Rate	Per Unit	Amount R s.
<b>1</b>	<b>PARTITIONS</b>				
<b>a</b>	<b>PARTLY GLAZED FULL HEIGHT PARTITION</b>				
	Providing and fixing in position partly glazed full height partition work in frame work at 2' X 2' grid (horizontally and vertically) comprising of Aluminium section 50mm x 50mm 1.3mm thick with 8mm thick Calcium Silicate board on both sides . The board joints and screw heads must be finished with a jointing compound, paper tape, and fiber tape to prevent cracking, followed by a minimum of two coats of Putty one coat of primer & 2 coats of Premium emulsion paint of approved colour. Item to include 8 mm thick float glass IS 14900 with etching/Film or Vinyl Poster as per design to be fixed with 1-1/4" x 3/4" T.W. moulding / laminated beading finished with paint /polish as directed and 2" X 2" T.W. member for door sides and glass side All exposed T.W. surfaces to be finished in polish of matching laminate colour as directed including all necessary Stainless Steel finish fittings / hardware,as per list of approved material and as approved by the Project consultant / bank complete in all respects. <b>(Note : In case of false ceiling, the vertical T.W. members to be fixed with pucca ceiling but the area of partition payable will be below the false ceiling only).</b>	400		Sqft	
<b>b</b>	<b>SOILD FULL HEIGHT PARTITION</b>				
	Providing and fixing in position solid Full height partition work in frame work at 2' X 2' grid (horizontally and vertically) comprising of Aluminium section 50mm x 50mm 1.3mm thick with 8mm thick Calcium Silicate board on both sides . The board joints and screw heads must be finished with a jointing compound, paper tape, and fiber tape to prevent cracking, followed by a minimum of two coats of Putty one coat of primer & 2 coats of Premium emulsion paint of approved colour .Rate to include providing cutouts and provisions to run electrical conduits, switches, etc and 2" X 2" T.W. member for door sides All exposed T.W. surfaces to be finished in polish of matching laminate colour as directed including all necessary Stainless Steel finish fittings / hardware, and wood preservative paint etc. as per list of approved material and as approved by the Project consultant / bank complete in all respects.				
	<b>(Note : In case of false ceiling, the vertical T.W. members to be fixed with pucca ceiling but the area of partition payable will be below the false ceiling only)</b>	400		Sqft	



Sl. No	Description of Item	Qty.	Rate	Per Unit	Amount R s.
<b>c</b>	<b>SOILD FULL HEIGHT One side Bison</b>				
	Same as above specification, but one side using 8mm thick bison board finished with 2 coats of putty one coat of primer and 2 coats of plastic emulsion paint .	1100		Sqft	
<b>d</b>	<b>Bison Partition</b>				
	Same as above Solid Partition specification, but using 8mm thick bison board finished with 2 coats of putty one coat of primer and 2 coats of plastic emulsion paint on both sides	100		Sqft	
<b>e</b>	<b>4'- 0" HEIGHT PARTITION</b>				
	Supplying & installation of solid partition made of frame work at 2' X 2' grid (horizontally and vertically) comprising of Aluminium section 50mm x 50mm 1.3mm thick with 8mm thick Calcium Silicate board on both sides . The board joints and screw heads must be finished with a jointing compound, paper tape, and fiber tape to prevent cracking, followed by a minimum of two coats of Putty one coat of primer & 2 coats of Premium emulsion paint of approved colour. The partition shall be fitted with 12mm thick float glass polished on all sides to a height of 0'-9" (included in 4'-0" depth) .	180		1Sft	
<b>2</b>	<b>DOORS</b>				
<b>a</b>	<b>ENTRANCE DOOR</b>				
	<p>Location: Main entry;</p> <p>Size: Main door - Average size – Double leaf – 1800 mm width x 2400 mm (min.) height.</p> <p>Material: 12 mm thk. Clear edge polished toughened glass.</p> <p>Hardware: SS Floor Spring, Latch lock/Dead Lock (Bottom or centre) , SS Handle "H or D" type (900 Long and 25 mm dia).</p> <p>Installation of fully glazed frameless glazed door (Single or double leaf of size as mentioned in drawing and as directed by the Architect) made out of 12 mm thk. Toughened glass and the door shall be fixed with floor springs with SS finish patch fittings on top, bottom. Lock. The door shall have lock in the center of approved make with 450 mm to 600 mm long SS handle of 25 mm dia. (for internal doors) and 900 mm long SS handles of 25 mm dia. (for main entry doors) to be fitted horizontally/ vertically as per instructions of the Architect.</p> <p>The Rate shall be including the making of necessary holes in glass for Access control locks, complete in all respect with all hardware, fittings, fixtures etc. complete in all respects. All necessary hardware, fittings, fixtures to be approved from the Architect or Bank's Officials before actual application of the same. Any change in the specifications must be first approved from the Architect and the Bank.</p>	21		1Sft	



SI.No	DESCRIPTION OF WORK	QTY	RATE	UNIT	AMOUNT (Rs)
<b>b</b>	<b>Fixed glass</b>				
	Providing and fixing of fixed glass partitions with 12mm thick toughened glass using PT Standard fittings like PT 90/PT 92 of Dorma make at the top and bottom including cutting, making holes in glass and fixing the fittings in floors, ceilings etc and making the same good with necessary screws, 3M vinyl sticker, sealants wherever required complete .	28		1Sft	
<b>c</b>	<b>Partly glazed Partition door</b>				
	Supply and installation of flush door 30mm thick ness of size 3'-0" x 7'-0" Shutter shall be finished with 1.0 mm thick laminate on both sides of approved shade and design. Door shall be lipped with 12 mm thick. t w beading along the edges. 8mm thick Float glasss to be used as required sizes fixed to TW beading finished with polish. Rate shall be inclusive of hardware, fittings, fixtures etc. in heavy duty SS such as lock of 6 lever of Godrej or Doorset make with SS mortise handle of approved make and model. Rate shall be inclusive of open door closers, SS heavy duty hinges, tower bolts, SS foot operated door stopper, SS buffer along the back side and any other related hardware , fittings, fixtures etc. required. The item shall include polishing of edges and frames in melamine , PU , paint as approved by the Architect.	63		1 Sft.	
<b>c</b>	<b>PARTITION FLUSH DOOR</b>				
	Supply and installation of flush door 30mm thick ness of size 3'-0" x 7'-0" Shutter shall be finished with 1.0 mm thick laminate on both sides of approved shade and design. Door shall be lipped with 12 mm thick. t w beading along the edges. . Rate shall be inclusive of hardware, fittings, fixtures etc. in heavy duty SS such as lock of 6 lever of Godrej or Doorset make with SS mortise handle of approved make and model. Rate shall be inclusive of open door closers, SS heavy duty hinges, tower bolts, SS foot operated door stopper, SS buffer along the back side and any other related hardware , fittings, fixtures etc. required. The item shall include polishing of edges and frames in melamine , PU , paint as approved by the Architect.	147		1 Sft.	

Sl.No	DESCRIPTION OF WORK	QTY	RATE	UNIT	AMOUNT (Rs)
3	<b>FULL HEIGHT STORAGE FINISHED IN LAMINATE</b>				
	<p><b>Location:</b> As per drawings, in back office area and running counters.</p> <p><b>Size:</b> Length as available size, 450 mm (D) and 2400 mm/750mm (H).</p> <p><b>Material:</b> 18 mm thick. MR Grade Plywood finished with 1mm thick laminate of approved colour &amp; shade externally and internally finished with 0.8 mm thick. balancing white or off-white laminate.</p> <p><b>Maintenance:</b> Surfaces, exposed hardware &amp; stain-prone areas should be cleaned with a soft damp cloth dipped in a mild soap solution, once a day.</p> <p><b>SPECIFICATIONS FOR FULL HEIGHT STORAGE FINISHED WITH LAMINATE</b></p> <p>Providing and fixing full height storage cabinet made out of 18mm thick MR Grade Plywood of approved make including the fixing of shelves at 400 mm to 450 c/c and the shutters shall be in 18 mm thick MR Grade Plywood and back covered with 12 mm MR Grade Plywood . The shutters made of 18mm thick MR Grade Plywood shall be divided vertically into 2 parts and shall be fixed with "S" type L-hinges of approved make so as to get an equal 8 mm groove between all the shutters at the opening and hinged end of every shutter as per the detailed drawing. The shutter shall be fixed with SS chain from inside so as to open the shutter less than 90 degree and to avoid the breaking of laminate at the hinged end. The shutters shall be finished externally with approved quality 1.0 mm thick laminate and internally finished with 0.8 mm thick. balancing white or off-white laminate. Rate shall be inclusive of provision of SS "D" type handles 4" or 6" as approved, Godrej or Vijayan locks with 3 keys, tower bolts off SS make etc. and all the necessary hardware, fixtures, fittings etc complete in all respects as directed by the Architect.</p>				
a	2'-6" Height	175		1Sft	
b	7'-0" Height	340		1Sft	

SI.No	DESCRIPTION OF WORK	QTY	RATE	UNIT	AMOUNT (Rs)
<b>4</b>	<p><b>Gypsum False Ceiling :</b></p> <p><b>Gypsum False Ceiling :</b> Plain gypsum board MR/FR grade ceiling: 12 mm thick Plain gypsum MR/FR grade false ceiling Suspension( considering all levels with require all fabricataion work and fitting from RCC slab to false ceiling level &amp; The rate shall be considered in sqm for all floors and at all heights, offsets whether covelight or fixed gypsum board size up to 100 mm to 1200 mm in the false ceilings including all costs) . Work complete as per the manufacturers specification of Saint Gobain or approved make- M/F Suspended Ceiling 1 hour fire rated.</p> <p>Providing and fixing Suspended ceiling using Gypsum or equivalent of ULtra G. I. Perimeter Channels of size 0.55mm thick having one flange of 20mm and another flange of 30mm and web 27mm along with perimeter of ceiling, screw fixed to</p> <p>brick wall / partitions with the help of nylon sleeves and screws, at min. 600 mm centers. Then suspending G. I. intermediate channel of size 45mm, 0.9mm thick with two flanges of 15mm each from the soffit at 1220mm centers with ceiling angle of width 25mm x 10mm x 0.55mm thick fixed to soffit with G. I. cleat and steel expansion fasteners. Ceiling section of 0.55mm thickness having knurled web of 51.5mm and two flanges of 26mm each with lips of 10.5mm are then fixed to intermediate channel with the help of connecting clip and in direction perpendicular to the intermediate channel at 457mm centers. 12mm gypsum MR/FR grade Board (conforming to IS 2095 part 1 2011) is then screw fixed to ceiling section with 25mm dry wall screwed at 230mm centers. Screw fixing is done mechanically either with screw driver or drilling machine with suitable attachment. Finally the boards are to be jointed and finished so as to have a flush look which includes filling and finishing the edges of the boards with jointing compound, Joint paper tape . Cutouts For light fittings,</p>				

SI.No	DESCRIPTION OF WORK	QTY	RATE	UNIT	AMOUNT (Rs)
	<p>grill diffusers shall be made. Necessary cutting / providing openings in the ceiling for AC fixtures, grills, electrical fittings, or other utility services, hatch openings etc. shall be provided by the Contractor and cost of making such modifications shall be included in the price. No separate charges for cutting / providing opening will be paid. Joints between the two gypsum board, (Board placed staggered) gypsum board and wall will have suitable tape and finishes with plaster of paris so as to have crack free joints.</p> <p>The item includes providing and fixing trap door of size 600 X 1200 mm as per approved sample of Ceiling panels comprise of a powder-coated beaded steel frame with gypsum / plywood board door. Each panel features a push-latch closing mechanism with door retaining safety cable &amp; hook. Suspenders from ceiling to support the frame and trap door firmly along with necessary hilti fastner, cleats, screws, angles, packing, etc. complete work. Work complete including all type of tools, tackles, finishing etc complete as per approved sample &amp; instruction of Architect/ Client/ PMC. sample mock shall be approved from Architect/ Client. The ceiling to be completed ceiling with 3 coats of plastic emulstion paint over a 2 coats of putty and a primer coat.</p>	1300		1Sft	
5	<b>MODULAR FALSE CEILING - Daiken (Revealed type)/ equivalent make</b>				
	<p><b>Daiken (Revealed type) detail.</b>  <b>Location:</b> ME-lobby, Banking area and service areas.  <b>Size:</b> 600 mm x 600 mm (tile size).  <b>MODULAR CEILING:</b> Providing and fixing modular false ceiling tiles of 600 mm x 600 mm centre to centre and 13 mm thick square mineral fibre board to be fixed on frame work of Aluminium sections for suspended false ceiling consisting of Aluminium T 2" X 1 1/2" (50 mm X 40 mm) weighing 0.39 kg/m at 60 cms centre to centre and fixed with 1/2" x 1/2" (15 x 15 mm) flanges weighing 0.19 kg/m suspended on 6 mm dia. mild steel rod weighing 0.22 kg/m, fixed on wall and beams including rounding of the edges with aluminium T of 2" x 1 1/2" (50 mm x 40 mm) weighing 0.39 kg/m etc. (All aluminium sections shall be anodized/powder coated) including all labour, material, lifts etc. complete. Make -Daiken (Revealed type) or equivalent make</p>	1620		Sft	

SI.No	DESCRIPTION OF WORK	QTY	RATE	UNIT	AMOUNT (Rs)
8	<b>AGM TABLE</b>				
	<p>Providing a DZM table of size 7'-0" x 3'-6" and height 2'-6" made of 18 mm thick MR Grade Plywood Ply for vertical sides &amp; modesty panel. The table should have 25mm thick top. The exposed surfaces of MR Grade Plywood Ply finished with 1 mm thick decorative laminate of approved colour &amp; all inside surfaces finished with approved colour of 0.8 mm thick decorative laminate. The Item to have 10mm thick clear float glass for table top with polished edges. The edges of the table lipped with a TW frame of size 2" x 1" and finished to desired wood effect by melamine polish after necessary surface preparation. The table to have a TW foot rest of size 3" x 1½" finished suitably.</p> <p>The table to also have key board trays made of size 2'3" x 1'0" (approx) made of 18 mm thick MR Grade IS303 (dimensions as per system installed), and sliding in MS (Mild Steel) brackets fixed below the counters &amp; tables. The surfaces of keyboard trays finished with approved colour of 1mm thick decorative laminate. All exposed edges lipped with a TW beading of size 1" x ¾" &amp; finished to desired wood effect by melamine polish after necessary surface preparation. Foot rest cum CPU stand of required length with same 18 mm Ply finished with 0.8mm thick laminate.</p> <p>50mm Dia SS wire manager, Telescopic channel of approved quality One set of 4 drawers about 450mm wide, 712.5mm high and 600mm deep to shape supported with 18mm MR ply at bottom, sides and rear. 4 nos. of drawers out of which 3 nos. of equal height and 1no. drawer at the top most of 75mm high made out of 12mm thick Com. ply finished with 1mm thick laminate at front side with necessary lipping telescopic drawer slides, locking arrangements, 100mm long brush finish SS handles, etc., complete.</p>	1		1 No.	
9	<b>AGM SIDE UNIT</b>				
	<p>Providing a side unit of size 3'6" x 1'6" x height 2'6" made of 18mm thick MR Grade IS303 for shelf, Side hung shutter in both the panels using 18mm com. ply and finished with 1mm thick laminate of approved colour and shade, including all necessary lipping, Box type hinges, locking arrangement, 100mm long C Shape SS brush finish handles, tower bolt, ball catch, etc., complete. and finished with 1.0mm thick approved colour of decorative laminate on the outside &amp; inside surfaces finished with approved colour of 0.8mm thick decorative laminate. The exposed edges lipped with TW beading of size 1' x ¾" and finished to desired wood effect by melamine polish after initial surface preparation. The side unit to be complete with all accessories such as knobs, handles, lock &amp; key arrangement of approved quality.</p>	1		1 No.	



SI.No	DESCRIPTION OF WORK	QTY	RATE	UNIT	AMOUNT (Rs)
<b>10</b>	<b>RAC &amp; MAPC Head table</b>				
	Providing a RAC & MAPC Head table of size 6'-0" x 3'-0" and height 2'-6" made of 18 mm thick MR Grade Plywood Ply for vertical sides & modesty panel. The table should have 25mm thick top. The exposed surfaces of MR Grade Plywood Ply finished with 1 mm thick decorative laminate of approved colour & all inside surfaces finished with approved colour of 0.8 mm thick decorative laminate. The Item to have 10mm thick clear float glass for table top with polished edges. The edges of the table lipped with a TW frame of size 2" x 1" and finished to desired wood effect by melamine polish after necessary surface preparation. The table to have a TW foot rest of size 3" x 1½" finished suitably.				
	The table to also have key board trays made of size 2'3" x 1'0" (approx) made of 18 mm thick MR Grade IS303 (dimensions as per system installed), and sliding in MS (Mild Steel) brackets fixed below the counters & tables. The surfaces of keyboard trays finished with approved colour of 1mm thick decorative laminate. All exposed edges lipped with a TW beading of size 1" x ¾" & finished to desired wood effect by melamine polish after necessary surface preparation. Foot rest cum CPU stand of required length with same 18 mm Ply finished with 0.8mm thick laminate.				
	50mm Dia SS wire manager, Telescopic channel of approved quality One set of 4 drawers about 450mm wide, 712.5mm high and 600mm deep to shape supported with 18mm MR ply at bottom, sides and rear. 4 nos. of drawers out of which 3 nos. of equal height and 1no. drawer at the top most of 75mm high made out of 12mm thick Com. ply finished with 1mm thick laminate at front side with necessary lipping telescopic drawer slides, locking arrangements, 100mm long brush finish SS handles, etc., complete.	2		1No	
<b>9</b>	<b>RAC &amp; MAPC Head SIDE UNIT</b>				
	Providing a side unit of size 3'3" x 1'6" x height 2'6" made of 18mm thick MR Grade IS303 for shelf, Side hung shutter in both the panels using 18mm com. ply and finished with 1mm thick laminate of approved colour and shade, including all necessary lipping, Box type hinges, locking arrangement, 100mm long C Shape SS brush finish handles, tower bolt, ball catch, etc., complete. and finished with 1.0mm thick approved colour of decorative laminate on the outside & inside surfaces finished with approved colour of 0.8mm thick decorative laminate. The exposed edges lipped with TW beading of size 1' x ¾" and finished to desired wood effect by melamine polish after initial surface preparation. The side unit to be complete with all accessories such as knobs, handles, lock & key arrangement of approved quality.	2		1 No.	



SI.No	DESCRIPTION OF WORK	QTY	RATE	UNIT	AMOUNT (Rs)
11	<b>Officers Workstations (Single)</b>				
	Providing a Officers table of size 4'-6" x 2'-6" and height 2'-6" made of 18 mm thick MR Grade Plywood Ply for vertical sides & modesty panel. The table should have 25mm thick top. The exposed surfaces of MR Grade Plywood Ply finished with 1 mm thick decorative laminate of approved colour & all inside surfaces finished with approved colour of 0.8 mm thick decorative laminate. The Item to have 10mm thick clear float glass for table top with polished edges. The edges of the table lipped with a TW frame of size 2" x 1" and finished to desired wood effect by melamine polish after necessary surface preparation. The table to have a TW foot rest of size 3" x 1½" finished suitably.				
	The table to also have key board trays made of size 2'3" x 1'0" (approx) made of 18 mm thick MR Grade Plywood Ply (dimensions as per system installed), and sliding in MS (Mild Steel) brackets fixed below the counters & tables. The surfaces of keyboard trays finished with approved colour of 1mm thick decorative laminate. All exposed edges lipped with a TW beading of size 1" x ¾" & finished to desired wood effect by melamine polish after necessary surface preparation. One drawer unit at top and one storage at bottom about 450mm width, 712.5mm height and 600mm deep supported with 18mm HDHMR at bottom, sides and rear finished with 1mm thick laminate of approved colour and shade with necessary TW lipping, telescopic drawer slides, locking arrangements, 100mm long SS brush finish handles, Box type Hinges, etc., complete.	15		1No	
7	<b>OFFICER DIVIDER GLASS</b>				
	Supply and installation of divider glass of size 2'-6" x 1'-6" above the table top using 12mm Thick Toughened glass whereas the free corners to be curved with radius of 1" nd edges to be polished & etching. The glass to be fixed using 3 nos Heavy Duty ss Clamps/ TW Moulding and to be french polish finish.	15		Nos.	
12	<b>CONFERENCE TABLE</b>				
	Supply and installation of a conference table of size 12'-0"x 3'-6" and height 2'-6"-(2NOS) made of 18mm MR Grade Plywood 2nos sandriched together and finished with approved shade of 1mm thick laminate . . The edges of table top lipped with TW frame of size 3"x1" and finished with melamine polish after necessary surface preparation.	1		1No	



SI.No	DESCRIPTION OF WORK	QTY	RATE	UNIT	AMOUNT (Rs)
13	<b>Roller Blinds</b>				
	The Blind system consist of a coated aluminium tube of 38 mm diameter with provision of fabric clamping. The Fabric is rolled up and down through a chain drive system with built in drivegear and an over run brake system. The side brackets are universal type suitable both for wall and ceiling mounting. The bottom end of the fabric is rolled over an oval shape aluminium tube with provision to lock the fabric.	185		1 Sft	
14	<b>TEXTURE PAINT</b>				
	Providing & applying Texture paint of approved colour & design .Item to include surface preparation wherever required by 2 coats of putty & single coat of primer	440		1Sft	
15	<b>CENTER TABLE</b>				
	<b>SIZE: - 450mm x 950mm</b>				
	Providing and making center tables of above mentioned size as per drawing. Table top shall consist of 12 mm. Thk. float glass with chamfered edge (bevelled edge) fitted to the frames with necessary arrangement. The base shall be made up of Steam beach wood frame as directed by the Bank / Architect. It should be with 4 Nos of 20mmx35mm for vertical members tied in X pattern with 20mm x 35mm frames at bottom and All wooden frames to be finished with melamine.	2		1No	
16	<b>LUNCH PLATFORM</b>				
	Providing and laying platform of 1'-3" to 1'-6" width (clear) and at 3'-6" height (top) above FFL. of approved 20mm thick granite with bull nosed edge. It shall be laid on MR Grade Plywood and steel L angle bracket. The platform shall be cantilevered from the wall as shown in the drawing. The edge of the platform should be double edged with half round machine polished. 9" wide 19mm thk marine ply to be provided below the lunch counter (4') for shelves for Tiffin's and kitchen items.	15		Rft	
17	<b>POOJA Unit</b>				
	Supply & installation of pooja unit of size 7'-0" x 7'-0" to a depth of 1'-6" made up of 18mm thick MR Grade Plywood shelf divider .Storage unit to be given to a height 2'-6" from floor level made of 18 mm thick MR Grade Plywood closed with shutters .Top of the unit to be finished with Mandir setup to a height of 1' in 3 steps using 18mm thick MR Grade Plywood. ALL the MR Grade Plywood to be finished with 1mm thick approved colour laminate.	49		1Sft	



Sl.No	DESCRIPTION OF WORK	QTY	RATE	UNIT	AMOUNT (Rs)
18	<b>SHOWCASE BOXING</b>				
	Providing and fixing Showcase Boxing to detail(app. Size 1'6"x6'x1'6"), 18mm thick MR Grade Plywood finished with 1mm laminate of approved colour and shade with necessary grooves and beading, 3 nos of intermediate Glass shelves with D brackets	2		1No	
19	<b>PIN-UP BOARD / SOFT BOARD</b>				
	It is useful for the staff to pin-up the important notices, memos and Bank's related information and which needs to be visible. <b>Location:</b> On the running or sales counters table – free standing and also acting as a divider, on partitions or walls adjacent to or in front of the  <b>Material:</b> 15 mm thick Pin-up board (soft board) with 18 mm thick. MR Grade Plywood Ply backing covered with approved coloured "Vermillion fabric supported on SS supports. <b>Maintenance:</b> All surfaces should be cleaned with dry cloth/ duster daily with a soft damp cloth dipped in a mild soap solution.	120		1Sft	
	<b>Total( Excluding GST)</b>				

**Place:**  
**Date:**

**Signature of contractor with seal**



**SCHEDULE OF QUANTITIES FOR PROPOSED INTERIOR WORKS OF RAC,MAPC & RAPC (Right Wing) AT INDIAN BANK ZONAL OFFICE 4TH FLOOR , NO:55, ETHIRAJ SALAI, EGMORE, CHENNAI-600 008**

**ELECTRICAL WORK**

Sl.No	Description of Items	Qty	Rate	Per Unit	Amount (Rs)
<b>1</b>	<b>MAIN SWITCH</b>				
1.1	Providing and fixing 125A TPN MCCB 25KA (Change over switch for in suitable enclosure etc.,	1		No	
1.2	Providing and fixing 125A TPN MCCB 35 KA , in suitable enclosure from power main power etc.,	1		No	
<b>2</b>	<b>Main SUB PANEL BOARD</b>				
	<p>Supplying, fabricating, installation, testing and commissioning of floor mounted Panel Board made of 16G CRC sheet in welded construction along with suitable and compact cable chambers including necessary stiffeners, self supporting, modular constructions, compartmentalized pattern complete with copper bus bars, copper interconnections etc. ring main earthing with 35x 10 mm copper flat, suitable earthing of all switch gear components with 6sqmm multistranded copper flexible PVC insulated with ends terminated with suitable crimping type copper cable sockets and tinning at all tapping connections complete as required. The copper bus bar flat shall be provided for the entire length of bus chamber.The panel board shall be powder coated to Siemens grey shade after undergoing 7- tank process.</p> <p>The rate shall include the cost of providing necessary base channel for erection complete with anchor fasteners/ foundation bolt, and nuts etc., and all other connected civil works for grouting the panel. The panel shall be provided with the following:-</p> <p>Incomer :</p> <p>1 No. 125 A TP&amp;N MCCB (35KA)</p> <p>1 No. instrument panel comprising of 1 No. 0-500V 75mm square flush mounting Digital Voltmeter with built in selector switch, 1 No. 0-100 A 75mm Sq. flush mounting Digital Ammeter with built in selector switch and 200/5A cast resin CTs)</p> <p>Outgoings:-</p> <p>4 No 100A TP &amp; N MCCB ( 25 KA) for A/C DB</p> <p>1 No. 63 A TP&amp;N MCB (25KA) for ( Spare)</p> <p>1 set 100 A capacity copper bus bars with 4 nos 35mm x 10mm copper flats for 3 phases and neutral duly insulated with PVC colour sleeve (heat shrink) mounted on SMC/DMC base block.</p>	1		Set	



SI.No	DESCRIPTION OF WORK	QTY	RATE	UNIT	AMOUNT (Rs)
3	<p><b>APFC PANEL</b>  <b>Supply, Installation, Testing and Commissioning (S I T C) of wall mounted 15 KVAR six stage Automatic Power Factor Correction (APFCR) Panel</b> and powder coated made of 16G CRC sheet in welded construction along with suitable and compact cable chambers including necessary stiffeners, The rate shall include the cost of providing necessary base channel for erection complete with anchor fasteners/ bolt, and nuts etc., and all other connected civil works for grouting the panel. The panel has to be vermin and dust proof. The panel shall be provided with the following:-</p>				
	1No.63A,TP, MCB as incomer				
	1 no power factor correction relay, 1 Set of phase indicating lamps, 1 set of Auto/Manual switch, contactors & MCB of suitable ratings along with the following outgoing:-				
	4 Nos of 5.0 KVAR capacitor				
	4 Nos of 2.5 KVAR capacitor				
	6 sets of on/off push button with indicating lamp.				
	ON/OFF/TRIP indication lamp for each capacitor				
	1 Set, RYB, indicating lamps with resistors and fuses for incomer.				
	The rate includes providing 100/5A CI-1, 5VA rated CT at EB mains and wiring from the CT to APFCR	1.00		No	
4	<b>DISTURBUTION BOARDS</b>				
a	<p><b>Main Distribution Board : S I T C of IP:43 6way VTPN With MCCB &amp; MCB VDB with following., phase seggregated, IP-43, double metal door DB with complete set of accessories</b> including bus bars, copper interconnections, dummies, etc. The DB shall have an incomer, sub- incomer and outgoing with double metal door, copper bus bars etc. The DB should be installed on the surface of the wall using MS angle frame. All MCCBs must be "D" curve. The rates shall include the cost of all necessary civil works. All the above materials shall be as per the latest ISI standards.                      The DB shall comprise of the following:-  <b>Incomer:</b>                      1 no. 100A 4P MCCB  <b>Outgoing:</b>                      3 nos. 63A TP MCB(PDB,UPS DB,SPARE)                      2 nos. 63 A TP MCB (LDB,SPARE)  <b>Location : UPS / Electrical room</b></p>	1.0		No	



SI.No	DESCRIPTION OF WORK	QTY	RATE	UNIT	AMOUNT (Rs)
<b>b</b>	<b>AC DB</b>				
	<p>Supply, installation, testing and commissioning of wall mounted Vertical DB type 4 way 3 phase, Distribution board with double door concealed in wall and fabricated out of 16 Swg CRCA and powder coated to Siemens gray shade after undergoing 7- tank process. The rate shall include the cost of chasing the wall and concealing the same including making good the surfaces smooth to receive the putty and painting. The DB shall comprise of the following:-</p> <p>1 No. 100A 4P MCB as incomer. out going each with 15nos 63A DP MCB</p>	1		No	
<b>c</b>	<b>LDB</b>				
	<p>Supply, installation, testing and commissioning of double door, wall mounting type, 6 way 3 phase, phase segregated Distribution board (LDB - 1) fabricated out of 16 G CRCA sheet steel, powder coated and with 10KA type 'C' MCB's. The rate shall include the cost of chasing the wall and concealing the same including making good the surface smooth to receive the patty and painting. The DB shall comprising the followings.</p> <p>1 No. 40A 4P (25KA) MCB as incomer. 3 sets of out going each with 1 No.40A DP ELCB+MCB(100mA) and 24 nos 10/6A SP MCB as outgoing with necessary interconnection copper wires etc.,</p>	1		No	
<b>d</b>	<p><b>UPS MAIN DB:</b> <b>S I T C of 8 way, SPN, IP-43, metal door DB with complete set of accessories</b> including bus bars, copper interconnections, dummies, etc. All MCBs must be "D" curve. All the above materials shall be as per the latest ISI standards. The rates shall include the cost of all necessary civil works like chasing the wall, concealing the DB, leveling and making good of the surfaces to receive the putty and painting. All the above materials shall be as per the latest ISI standards. The DB shall comprise of the following:- <b>Incomer:</b> 1 no. 40A DP MCB <b>Outgoing:</b> 3 nos. 32 DP MCB <b>Location : At UPS Room</b></p>	1.0		1No	



Sl.No	DESCRIPTION OF WORK	QTY	RATE	UNIT	AMOUNT (Rs)
e	<b>UPS DB - 1</b>				
	<p>Supply, installtion, testing and commissioing of wall mounted powder coated 12 way single phase Distribution board (as UPS DB 1) with double door concealed in wall and fabricated out of 16 Swg CRCA and powder coated. The rate shall include the cost of chasing the wall and concealing the same including making good the surfcaes smooth to receive the putty and painting. The DB shall comprise of the following:-</p> <p>1 no 32A DP MCB as incomer 10 Nos. 10/6A SP MCB as outgoing for computer nodes with necessary interconnection copper bus bars etc.,</p>	1		Set	
f	<b>UPS DB - 2</b>				
	<p>Supply, installtion, testing and commissioing of wall mounted powder coated 8 way single phase Distribution board (as UPS DB 2) with double door concealed in wall and fabricated out of 16 Swg CRCA and powder coated. The rate shall include the cost of chasing the wall and concealing the same including making good the surfcaes smooth to receive the putty and painting. The DB shall comprise of the following:-</p> <p>1 no 32A DP MCB as incomer 6 Nos. 10/6A SP MCB as outgoing for computer nodes with necessary interconnection copper bus bars etc.,</p>	1		Set	
g	<b>PDB - 2 ( Main Raw Power DB )</b>				
	<p>Supply, installation, testing and commissioing of wall mounted cubicle type 4way 3 phase, Distribution board (PDB - 1) with double door concealed in wall and fabricated out of 16 Swg CRCA and powder coated to Siemens gray shade after undergoing 7- tank process. The rate shall include the cost of chasing the wall and concealing the same including making good the surfaces smooth to receive the putty and painting. The DB shall comprise of the following:-</p> <p>1 No. 63A 4P MCB as incomer. 2 nos 40A TP MCB as outgoing with necessary interconnection copper wires etc.,</p>	1		1No	

Sl.No	DESCRIPTION OF WORK	QTY	RATE	UNIT	AMOUNT (Rs)
<b>h</b>	<b>POWER DB - 1</b>				
	Supply, installtion, testing and commissioing of wall mounted powder coated 12 way single phase Distribution board (as Power DB 1) with double door concealed in wall and fabricated out of 16 Swg CRCA and powder coated. The rate shall include the cost of chasing the wall and concealing the same including making good the surfcaes smooth to receive the putty and painting. The DB shall comprise of the following:-  1 no 32A TP MCB as incomer 9 Nos. 10/6A SP MCB as outgoing for computer nodes with necessary interconnection copper bus bars etc.,	1		Set	
<b>i</b>	<b>POWER DB - 2</b>				
	Supply, installtion, testing and commissioing of wall mounted powder coated 8 way single phase Distribution board (as Power DB 2) with double door concealed in wall and fabricated out of 16 Swg CRCA and powder coated. The rate shall include the cost of chasing the wall and concealing the same including making good the surfcaes smooth to receive the putty and painting. The DB shall comprise of the following:-  1 no 32A TP MCB as incomer 5 Nos. 10/6A SP MCB as outgoing for computer nodes with necessary interconnection copper bus bars etc.,	1		Set	
<b>j</b>	<b>BRANCH POWER MASTER CONTROLS</b> <b>S I T C of 63A 4P 25 KA MCB housed in fabricated metal enclosure near the main door of branch LDB,PDB,ELDB for master control.</b> The rates shall include the cost of all neccessary civil works like chasing the wall, concealing the metal enclosures, leveling and making good of the surfaces to receive the putty and painting. All the above materials shall be as per the latest ISI standards.	1		no	
<b>k</b>	Supply and Installation of 63A FP MCB housed in manufacturer's powder coated MS box for 7.5/10 KVA UPS input control	2		No	
<b>l</b>	Supply & installation of 63A Automatic Phase Selector Switch with all interconnections etc.(3 phase in , Single phase out)	2.0		No	

Sl.No	DESCRIPTION OF WORK	QTY	RATE	UNIT	AMOUNT (Rs)
<b>5</b>	<b>Cables and Cable Terminations</b>				
5.1	Supply & laying of 4 core 50 sq.mm aluminium armoured LT UG XLPE cable laid above the ground and clamping the same at adequate intervals to the slab/beam/wall etc. from 200A EB Main FSU switch, to COS to Main Panel along with 2 runs of 10 SWG copper wire for earthing.	75		Mt	
5.2	Supply & laying of 4 core 25 sq.mm copper Ar cable laid above the ground and clamping the same at adequate intervals to the slab/beam/wall from main panel to Main on the suitable PVC pipe with 2 runs of 2 Rx 10 sqmm green wire for earthing.	75		Mt	
5.3	Supply & Laying of 4 runs of 10 sqmm plus 2 runs of 4 sqmm copper conductor wire drawn through suitable dia pvc conduit ect..	80		Mt	
5.4	Supply & Laying of 4 runs of 6 sqmm plus 1 runs of 4 sqmm copper conductor wire drawn through suitable dia pvc conduit ect..	100		Mt	
5.5	Supply & Laying of 2 runs of 6 sqmm plus 1 runs of 4 sqmm copper conductor wire drawn through suitable dia pvc conduit ect..	50		Mt	
<b>6</b>	Providing end terminations for the above cables using double compression brass gland and copper crimping socket including earthing the cable glands with copper earth clamp and connecting the same to earth along with 14SWG copper earth wire for the following cables:-				
6.1	for 4 core 75 sqmm aluminium armoured LT UG cable.	6		No	
6.2	for 4core 25 sqmm aluminium armoured LT UG cable.	4		No	
6.3	Supply and fixing water proofing box with 63A DP MCB with accessories	10		No	
<b>7</b>	<b>Lighting Wiring ( for Lighting)</b>				
	Supply and installation of 2R 2.5 + 1 R 1.5 sqmm PVC insulated multi strand FRLS copper wire drawn in 20/25mm dia pvc conduit to be laid, partitions etc complete with all accessories including providing necessary marking of circuits with ferrules.	300		Mt	
<b>8</b>	<b>Raw Power Wiring</b>				
	Supply and installation of 2R 2.5 + 1 R 1.5 sqmm PVC insulated multi strand FRLS copper wire drawn in 20/25mm dia pvc conduit to be laid, partitions etc complete with all accessories including providing necessary marking of circuits with ferrules.	300		Mt	



SI.No	DESCRIPTION OF WORK	QTY	RATE	UNIT	AMOUNT (Rs)
<b>9</b>	<b>UPS Wiring</b>				
	Supply and installation of 2R 2.5 + 1 R 1.5 sqmm PVC insulated multi strand FRLS copper wire drawn in 20/25mm dia pvc conduit to be laid, partitions etc complete with all accessories including providing necessary marking of circuits with ferrules.	450		Mt	
<b>10</b>	<b>Lighting</b>				
	Wiring of light, fan points				
	Providing and laying point wiring for lights, fans, exhaust fans, 6A plug points etc., partly laid in surface conduits (above false ceiling) and necessarily concealed in recessed conduits in wall / partition / vertical drops, etc with 3 runs of 1.5 Sq.mm PVC insulated Flame Retardant Low smoke Cable (FRLS) with copper conductor in 20/25 mm dia. PVC conduit pipe 16G thick as per IS 9537 Part II including all accessories like base clamp, bends, couplings, junction boxes, rubber bushes, etc., along with supplying and fixing 6A modular type switches of approved make with front plate for control housed in metal boxes recessed in wall/partitions made from electro plated sheet metal box of approved make including giving connections complete as required. The rate shall include the cost of providing and fixing necessary threaded MS powder coated ceiling suspended pipe/rod along with slotted U channel including securing the same with clamp / cable tie as required wherever required.				
<b>10.1</b>	1 light controlled by one switch.	40		No	
<b>10.2</b>	2 light controlled by one switch.	20		No	
<b>10.3</b>	ceiling fan point along with 100W step type electronic regulator.	6		No	
<b>10.4</b>	Wall fan point with 5A socket	15		No	
<b>10.5</b>	Same as above item but for exhaust fan excluding regulator.	6		No	
<b>10.6</b>	5 A wall plug points in switch board	12		1No	
<b>10.7</b>	Wiring for call bell points with modular bell push, modular type buzzer, with indicator and reset button.	1		No	
<b>11</b>	<b>Supply and fixing of Light fittings and Fans</b>				
	Supply and Installation of following light fittings complete with all accessories like and also the necessary mounting accessories				

SI.No	DESCRIPTION OF WORK	QTY	RATE	UNIT	AMOUNT (Rs)
11.1	Supply and installation including assembling testing and commissioning of 600 x 600 mm modular recess mounted with 38W LED and suspended from ceiling either with 20mm dia 16 swg thick MS conduit ( ISI marked) down rods ( 0.8mt long approx) and heavy duty ball and sockets sealing plate, check nuts etc or with 8 SWG GI chain and giving connections.	30		No	
11.2	Supply and fixing of fixing recess mounted 15Watts LED downlight to be mounted on false ceiling.	35		No	
11.3	Supply and fixing of 230mm dia light duty exhaust fan with auto gravity louvre.	3		No	
11.4	Supply and fixing of 1x20 (4') Watts LED Tube light fixture along with electronic ballast and lamp.	15		No	
11.5	Supply and fixing of 48" sweep ceiling Fan including standard down rod.	5		No	
11.6	Supply & Installation of 12" Wall mounted fan	15		P/No	
11.7	Providing & Testing of LED Strip light (266 lumen per feet) with adaptor and proper nesecary fixing.	80		RM	
<b>12</b>	<b>Sound systems</b>				
12.1	Supplying and laying of 2Core 24/0.2 mm ATC Twin Twisted Speaker wire within the 20mm dia PVC conduit including giving connections.	300		Mt	
12.2	Supply & Installation of Philips / Bosch make 6W False Ceiling mounted speaker with necessary accessories including line matching transformer.	8		Nos	
12.3	Providing and fixing resistance type volume control knob along with modular front plate housed in the manufacturers zinc passivated MS box with front plate including concealing the same in the wall / partition and making good the surfaces smooth.	5		Nos	
12.4	Providing amplifier of 60 Watts Ahuja make with CD player with pen drive option for play light /instrumental music	1		Set	
<b>13</b>	<b>Telephone cabling and Data</b>				
13.1	Supply and laying of 0.6mm dia copper conductor, PVC insulated 2 pair CAT 05 CABLE telephone cable on the PVC conduit.	800		Mt	
13.2	Supply and installation of modular type single RJ-11cat 05 TYPE telephone socket housed in the manufacturers zinc passivated MS box with front plate. i/o TYPE	20		No	

SI.No	DESCRIPTION OF WORK	QTY	RATE	UNIT	AMOUNT (Rs)
13.3	Supply and laying 20 pair krone connector housed in heavy duty metal/ABS plastic mould with suitable locking arrangements.	1		No	
14	Supplying and fixing 3Nos 6 A shuttered socket outlet controlled by 2 Nos10A SP switch with front plate housed in a suitable elctro plated sheet metal box of approved make box recessed in wall for UPS	25		Nos	
15	Supplying and fixing 1Nos 6 A controlled by 1No 6 A switch shuttered socket outlet controlled by 2 Nos10A SP switch with front plate housed in a suitable elctro plated sheet metal box of approved make box recessed in wall for RAW	25		Nos	
16	Supply and installation of 2 nos 16A 5-pin socket with 2 nos of 16A modular switches housed in MS fabricated box to be concealed in wall/ partition for server and line printer.	5		No	
17	Supply and fixing 20A modular master double pole switch with front plate housed in suitable zinc passivated metal box to be fixed in partitions or concealed in walls.	25		No	
18	Supply and installation of raceways Strength: Heavy Duty. Thicknesses – , 2.0 mm. ,300 mm Finishes: MS, Hot dip galvanized including all civil works complete	80		Mtr	
19	<b>Earthing</b>				
a	Supply, installation, testing and commissioning of earth electrode as per IS 3043 ( <b>to be connected to UPS neutral only</b> ) using 600x600x3mm copper plate fitted with 2 runs of 25x3mm copper flat rivetted to the plate using copper rivets with a link on top for tapping connections including all accessories like 40mm dia B class GI watering pipe 2.5m long with funnel. The electrode and pipe shall be buried to the 2.5m depth with alternate layers of salt and charcoal. The rate shall include the cost of proving 450x450x300mm brick masonry chamber covered with removable FRC cover with holes to receive water along with RCC outer frame.	2		No	
b	Supply, installation, testing and commissioning of cast iron earth electrode as per IS 3043 using 100mm dia x 5/6mm thick cast iron pipe 3.0m long with funnel. The pipe shall be buried to the 3m depth with alternate layers of salt and charcoal. The rate shall include the cost of proving 450x450x300mm brick masonry chamber covered with removable FRC cover with holes to receive water along with RCC outer frame.	1		No	



Sl.No	DESCRIPTION OF WORK	QTY	RATE	UNIT	AMOUNT (Rs)
c	Supply and laying of 1R 10 Sqmm PVC insulated copper wire drawn in 25mm dia PVC pipe from plate earth electrodes to UPS-1,2 earth points and terminating both the ends with proper crimping type copper sockets to the earth links.The conduit will be partly underground and partly clamped on wall.	60		Mt	
d	Supply & Laying of 8SWG copper Wire for earthing Main panel board, Sub Main Panel Board, APFC panel and 125A Change Over Switch with ends terminated with copper cable sockets. The rate shall include the cost of providing and fixing earth bus using 25x3mm copper flat with holes for tapping connections with brass bolts and nuts.	80		Mtr	
II	<b>DATA CABLING WORKS (Structured)</b>				
1	Supplying and laying UTP CAT 6 (Systimax) through the 25mm thick PVC pipes / Raceways for data.	1300		Mt	
2	Supply and installation of CAT 06 -RJ45 female jack (single plate).	24		Nos	
3	Installation and connecting of 24 port switch 1000 Mbps D link make	1		Nos	
4	supply and fixing of 24 port jack panel	1		P/No	
5	Supply and installation of 12U closed rack.	1		Nos	
6	Supply and fixing 1 metre mounting cord (Systimax).	24		Nos	
7	Supply and fixing 2 metre mounting cord (Systimax).	24		Nos	
8	Termination and integration charges per set of nodes (Two ends) and testing, certification (Systimax) and documentation of all works.	24		Nos	
III	<b>INVERTER WIRING &amp; INSTALLATION</b>				
a	Supply, installtion, testing and commissioing of wall mounted powder coated 8 way single phase Distribution board (as Inverter DB) with double door concealed in wall and fabricated out of 16 Swg CRCA and powder coated. The rate shall include the cost of chasing the wall and concealing the same including making good the surfcaes smooth to receive the putty and painting. The DB shall comprise of the following:-  1 no 32A DP MCB as incomer 6 Nos. 10/6A SP MCB as outgoing for computer nodes with necessary interconnection copper bus bars etc.,	1		Set	
b	Supply & laying 1runs of 2.5Sqmm copper wire in suitable PVC conduits ( ISI make) 18mm dia including all civil works complete	375		1Rm	



SI.No	DESCRIPTION OF WORK	QTY	RATE	UNIT	AMOUNT (Rs)
c	Supply & fixing 15Amps switch & socket (modular type) as per specifications complete	2		1No	
d	Supply and laying 3 runs of 4 Sqmm copper wire in suitable PVC conduits (ISI make) 18mm dia including all civil works complete	100		1Rm	
20	Supply & Installation of hydraulic POP UP Box For Conference Table Containing Power socket 2 nos ,Data 1 no,Telephone 1no etc complete.	5		1No	
21	Supply & installation of HDMI Cable	150		Rm	
	<b>TOTAL(Excluding GST)</b>				

**Place:**

**Date:**

**Signature of contractor with seal**



**SCHEDULE OF QUANTITIES FOR PROPOSED INTERIOR WORKS OF RAC,MAPC & RAPC (Right Wing) AT INDIAN BANK ZONAL OFFICE 4TH FLOOR , NO:55, ETHIRAJ SALAI, EGMORE, CHENNAI-600 008**

**AIR CONTIONING WORK**

SI.No	DESCRIPTION	QTY	RATE	UNIT	AMOUNT (Rs)
1	Dismantling the existing following AC's along with copper pipe & stabilizers from the existing RAPC,MAPC & RAC office without any damages &refixing the same to the Proposed office.Work involves safe removing of both indoor & outdoor & copper piping ,Transportation,Refilling of Gas ,services if any & refixing the same to the proposed location using scaffolding and all civil works etc complete.				
	1.0 Tr Split AC	7		1No	
	1.5 Tr Split AC	4		1No	
	2.0 Tr Split AC	2		1No	
2	Supply, installation, testing and commissioning of 4 way cassette Air conditioning units( <b>single phase R-32 Gas</b> )(Blue Star, make) of capacity <b>2.0 TR</b> with copper condensor, coil and cordless remote etc, including minor civil works related to AC.	1		Nos	
3	Supplying, installation, of copper piping 5/8" dia for suction line and 3/8" for liquid line including all civil works complete./ Scaffolding.	20		RMT	
4	Charges for providing additional copper pipes (one circuit) for the above split units with necessary insulation and with adequate pvc insulated copper wire from indoor to outdoor units concealed and taken through beyond the standard 4m length.	40		Rmt	
5	Charges for providing additional 25mm dia CPVC drain pipe concealed / surface mounted and taken through wall/ partition including all civil works./Scaffolding	140		RMT	
6	Supply & installation of Communication cable from indoor to outdoor	25		RMT	

SI.No	DESCRIPTION OF WORK	QTY	RATE	UNIT	AMOUNT (Rs)
7	Supply & installation of MS stands of size depth 1'-6" to hold the outdoor units cassette air-conditioners. The stands to be finished with red oxide coating and 2 coats of synthetic enamel paint over a primer coat the rate shall be inclusive of scaffolding, civil & all related works complete.	14		No	
8	S & I Timer Switch with Contactor (For AC)-25/32 A	1		P/No	
	<b>TOTAL(Excluding GST)</b>				

**Place:**  
**Date:**

**Signature of contractor with seal**



**LIST OF TYPE AND MAKE OF MATERIALS TO BE USED**  
(CIVIL WORK)

SL. No.	MATERIALS	MANUFACTURERS
1.	CEMENT	L&T, BIRLA, RAMCO
2.	READY MIXED CONCRETE	L & T, BIRLA, RAMCO
3.	HYSD / MILD STEEL (TMT)	TATA / VSP
4.	ANTI-TERMITE CHEMICALS	CHLOROPYROPHOS EMULSIFIABLE CONCENTRATES OR EQUIVALENT
5.	CLAY BRICKS	LIGHT WEIGHT CLAY BRICKS FROM ANY MANUFACTURER OF REPUTE TO BE GOT APPROVED FROM BANK.
6.	FLUSH DOOR SHUTTERS	KUTTYS, ELEGANT, SHAKTHI
7.	GLASS (PLAIN/PIN HEADED/TINTED) BRASS,ALUMINIUM HARDWARE/FITTINGS	MODI FLOAT, SAINT- GOBAIN, ASAHI
8.	BRASS MORTICE LOCKS & LATCHES	EBCO, HETTICH, OR EQUIVALENT
9.	LATCHES WITH INTERNAL LOCKS	DOORSET, EBCO, HETTICH
10.	HYDRAULIC DOOR CLOSER AND FLOOR SPRING	GODREJ, EVERITE, DORMA
11.	ALUMINIUM DOOR, WINDOW AND VENTILATOR SECTIONS	JINDAL, INDAL, HINDALCO
12.	PVC WATER PIPES	SUPREME, FINOLEX ,PRINCE
13.	WATER PROOFING MATERIAL / COMPOUND FOR ROOF TOPS AND SUNKEN FLOOR	FOSROC, DR.FIXIT, BASF, SIKA OR EQUIVALENT APPROVED MAKE
14.	VITRIFIED TILES, GLAZED TILES, CERAMIC TILES	KAJARIA,JOHNSON, NITCO
15.	CEMENT BASE PAINTS	SNOWCEM PLUS (M/S KILLICK NIXON) OR EQUIVALENT
16.	SYNTHETIC ENAMEL PAINT	ASIAN PAINTS , NEROLAC, BERGER
17.	EXTERIOR EMULSION	ASIAN PAINT, NEROLAC, BERGER
18.	TEXTURE PAINT	SPECTRUM OR EQUIVALENT
19.	POLYSULPHIDE SEALANT	PIDILITE, FOSROC OR EQUIVALENT
20.	WOODEN FLOORING	PERGO , WIPARQUET , OR EQUIVALENT
21.	BLINDS	HUNTER DOUGLAS, MAC
22.	Ply Board & Ply wood (MR Grade plywood)	Green Ply, Century, Mayur
23.	Laminate	Skirting at lintel level: Merino 1122 ( Kingfisher blue)
		Main – Marino – 854 ( Nice pear)
		Shutter box ( Front & sides) – Kingfisher



	blue
	shutter box (bottom): Merino – 1057 ( Marie gold yellow)
	Storage cabinet (Incl.edge lipping): Merino – 854 ( Nice pear)
	Access lock pillar: Merino – 854 ( Nice pear)
	for inside portion of the room Merino 1122 (Kingfisher blue)
	for outside portion, or matching shades in Greenlam, Century, DuriAn.

SI. No.	Materials list	Approved makes	Make offered by Tender
1	2	3	4
1.	MR grade Ply	Century, Green Ply, Sharon,Mayura, Anchor	
2.	Laminates (1.0/mm thick/1.5 mm)	Greenlam, Merino, century lam,Sunmicaa	
3.	Aluminium	Jindal, Hindalco, tata	
4.	Synthetic enamel, OBD, Cement Paint.	Asian, merolac Shalimar.	
5.	Varnish	Sheenlac, Touch wood,	
6.	Melamine	Sheenlac, Touch wood,	
7.	Furniture fittings and fixtures	Kaff, godrej, hafele	
8.	Wood	First / Second class Teak Wood / IS 4021 of good quality, well seasoned and free from defects.	
9.	Mortise locks	Godrej, Dorset, Hafele	
10.	Glass	Saint Gobain, Asahi, borosil	
11.	Calcium Silicate Board	Ramco Hilux or equivalent	



SLN O	Description of materials	Approved /Models	Makes	Make offered by contractor
1	LT POWER DISTRIBUTION PANELS	CPRI Approved panel builder		
2	APFCR PANEL	CPRI Approved panel builder		
3	CABLES ISI MARK, 1100V (GRADE FR ), XLPE	ORBIT/POLYCAB/KEI/Finolex		
4	WIRES: 1100V/660V GRADE FR /FRLS	ORBIT/POLYCAB/KEI/Finolex		
5	G.I.CONDUITS ISI MARK	BEC, AKG		
6	PVC CONDUITS & ACCESSORIES	SETH /SUPER TUBE /PRECISION		
7	MODULAR switch and accessories	ROMA/LEGRAND/crab tree		
8	DISTRIBUTION BOARDS,	LEGRAND / ABB/C&S		
9	ACB / MCCB / MCB/ELCB/RCCB/RCBO	LEGRAND / ABB/C&S		
10	LED Light FITTINGS & Fans	PHILIPS,CROMPTON , HAVELLS, ORIENT		
11	CABLE GLANDS & LUGS	BRACO, DOWELS. Or equivalent		
12	INDUSTRIALSOCKETS	LEGRAND, MENNEKES,ABB,		
13	CONTACTORS	LEGRAND / ABB/C&S		
15	C.T (Current Transformer)	INDCOIL, MECO , NEWTEK		
16	CAPACITOR	SUBODHAN, L&T., EQUIVALENT		
17	ALUMINIUM RACEWAYS	JINDAL, INDAL.		
18	MANUAL CHANGE OVER SWITCH	LEGRAND / ABB/C&S		



		/ HAVELLS	
19	RACEWAYS / CABLE TRAYS	PROFAB/LEGRAND or equivalent	
20	MEASURING INSTRUMENT	SCHNEIDER/ L&T, EMCO, or Eq	
21	SPD (SURGE PROTECTION DEVICE )	LEGRAND,ABB, Vertiv	
22	EARTHING / EARTH PITS	ASHLOK / OBO OR EQUIVALENT ( Chemical Type Only)	
	TELEPHONE cable		
1	2 /5/10/20 50 pair cables	ORBIT/POLYCAB/KEI	
2	Krone connector	KRONE or equivalent	
3	Telephone socket	D link/anchor roma/crabtree / POLYCAB	
	DATA CABLE and ACCESOORIES		
1	CAT 6/ CAT 6A cables	D Link/legrand/ Cisco make / POLYCAB	
2	I/O RJ 45 ,and all accessories	D Link/legrand/ Cisco make / POLYCAB	
3	JACK panel , patch cords	D Link/legrand/ Cisco make / POLYCAB	
4	Wifi materials	D Link/legrand/ Cisco make / POLYCAB	
5	Net work switches	D Link/legrand/ Cisco make / POLYCAB	
6	RACK	Schneider /VALVO/LEGRAND	





Note –

1. Materials mentioned in the specification shall be used for the work. If specified material is not available prior approval of the Employer shall be taken to use other brands.
2. Preference of makes, supply of items should be consulted with client/consultant before effecting of supply.

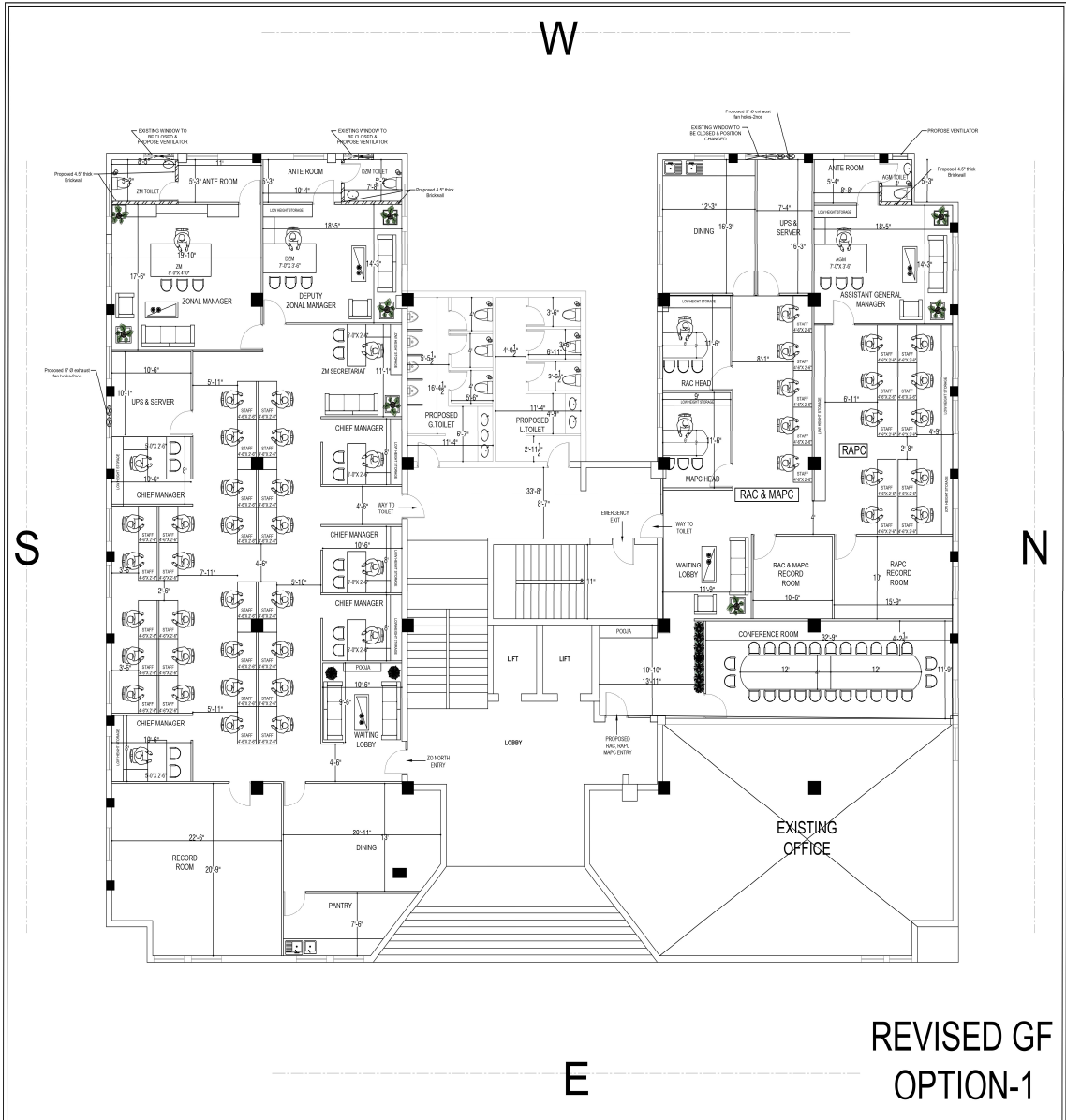
NAME AND ADDRESS OF THE CONTRACTOR:

SIGN & SEAL OF THE CONTRACTOR:

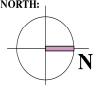
Date:

Place:

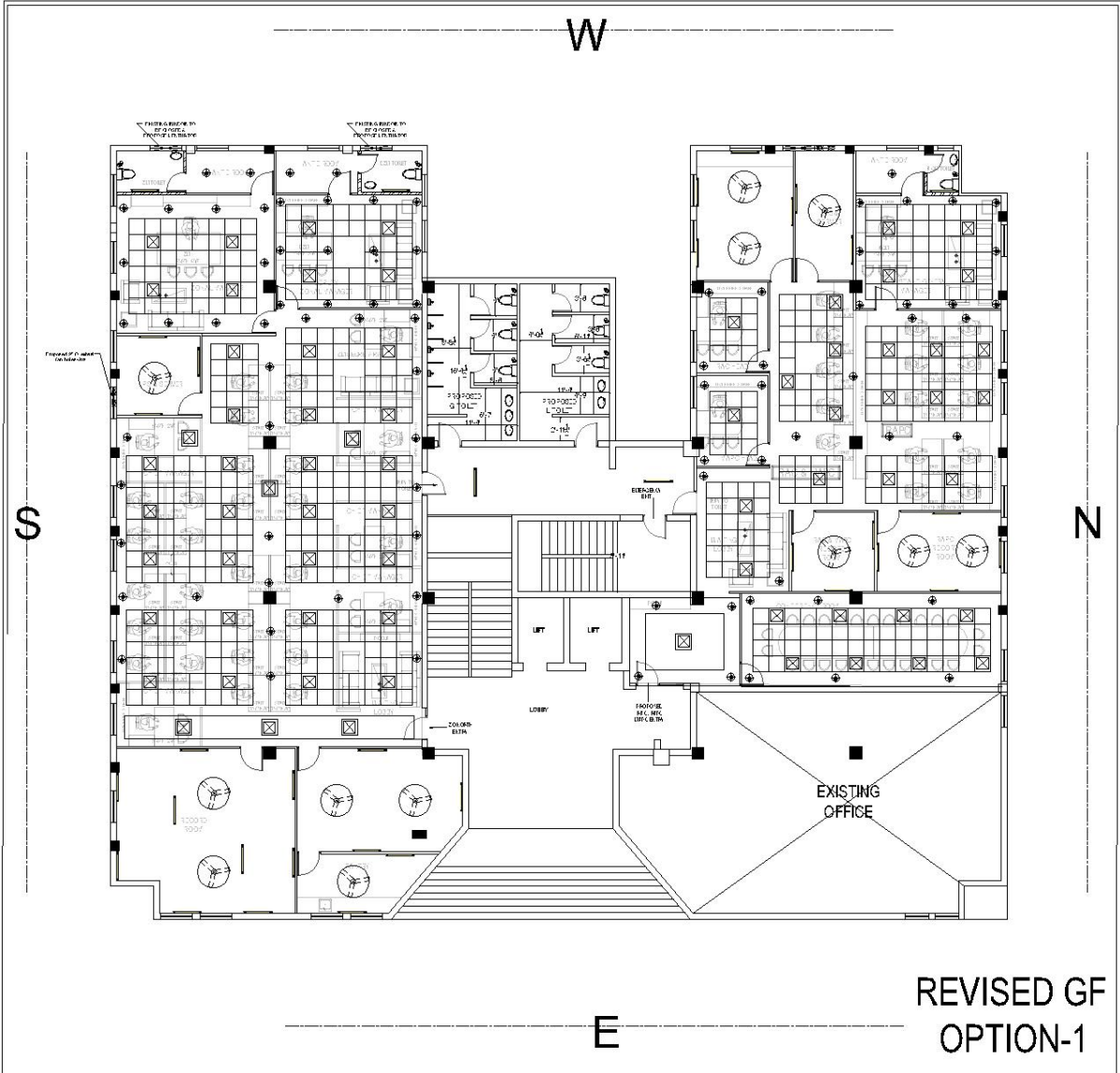


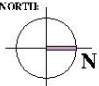


**REVISED GF  
OPTION-1**

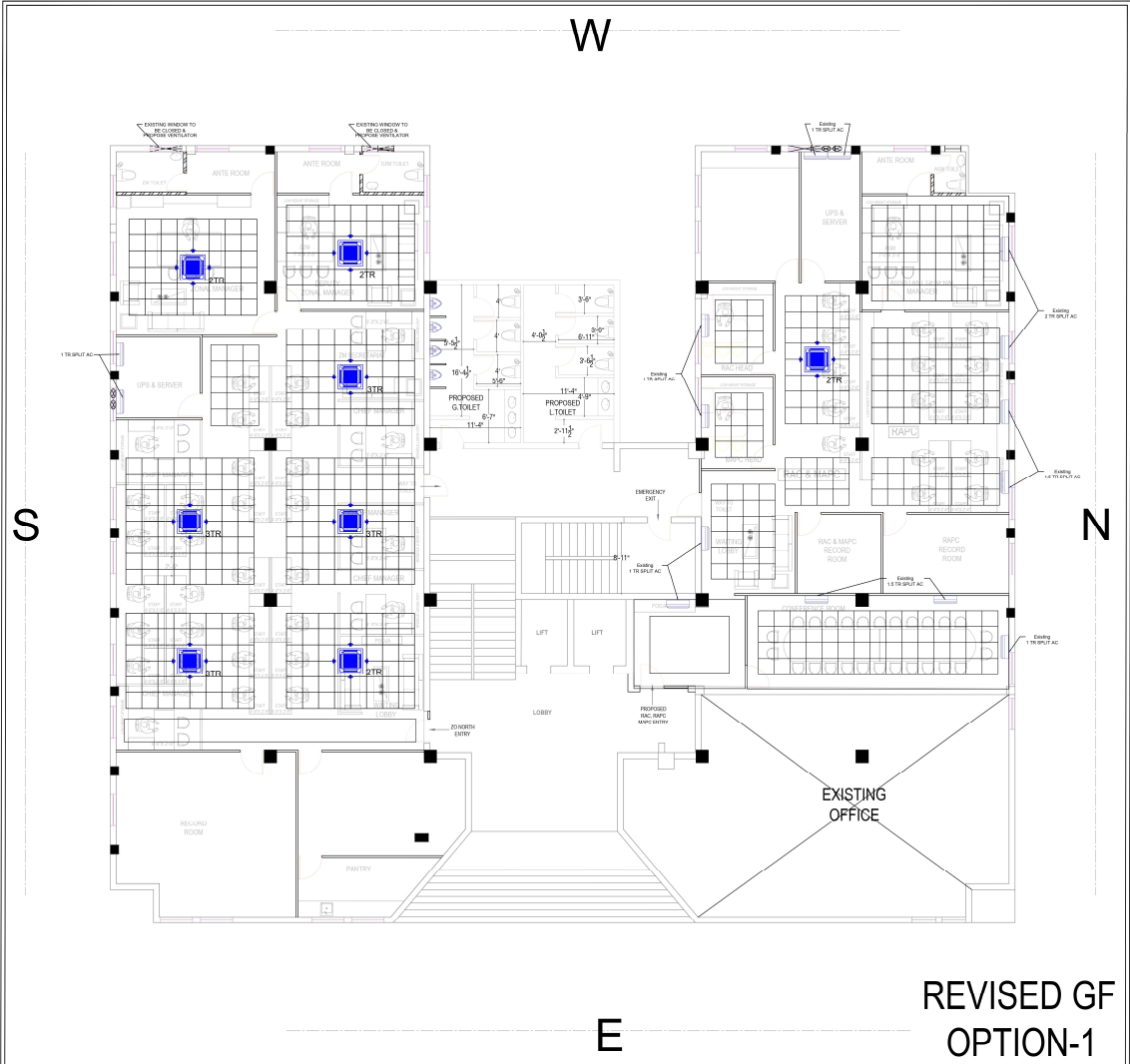
<p><b>CLIENT</b> <b>INDIAN BANK</b></p>	<p><b>DRAWN</b> ROCKY</p>	<p><b>DATE</b> 27.01.2026</p>	<p><b>DRAWING NO:</b></p>	<p><b>CHECKED BY:</b></p>	<p><b>CONSULTANTS :</b> <b>M/S ARUN ARCHITECTS</b> New NO: U-12, Old nO: U-27 <b>10TH STREET,</b> <b>ANNA NAGAR, CHENNAI - 40</b> <b>PH: 044 - 7968 4926</b></p>
<p><b>PROJECT</b> Plan showing the proposed layout for Indian Bank Zonal Office at Ground Floor at ethiraj salai, Chennai.</p>	<p><b>SCALE</b> N.T.S</p>	<p><b>REVISION DATE</b> 25.02.2026</p>	<p><b>PROJECT NO:</b></p>	<p><b>APPROVED BY:</b></p>	
<p><b>DRAWING TITLE:</b> <b>GROUND FLOOR PROPOSED</b></p>				<p><b>NORTH:</b></p> 	



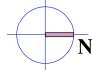


CLIENT <b>INDIAN BANK</b>	DRAWN	ROCKY	DRAWING NO:	CHECKED BY:	CONSULTANTS : <b>M/S ARUN ARCHITECTS</b> New NO: U-12, Old nO: U-27 <b>10TH STREET,</b> <b>ANNA NAGAR, CHENNAI - 40</b> PH: 044 - 7968 4926
	DATE	27.01.2026	PROJECT NO:	APPROVED BY:	
PROJECT Plan showing the proposed layout for Indian Bank Zonal Office at Ground Floor at ethiraj salai, Chennai.	SCALE	N.T.S	NORTH 		
	REVISION DATE	23.02.2026			
	DRAWING TITLE:			ELECTRICAL LAYOUT	





**REVISED GF  
OPTION-1**

<b>CLIENT</b> <b>INDIAN BANK</b>	<b>DRAWN</b> ROCKY	<b>DRAWING NO:</b>	<b>CHECKED BY:</b>	<b>CONSULTANTS :</b> <b>M/S ARUN ARCHITECTS</b> <b>New NO: U-12, Old nO: U-27</b> <b>10TH STREET,</b> <b>ANNA NAGAR, CHENNAI - 40</b> <b>PH: 044 - 7968 4926</b>
	<b>DATE</b> 27.01.2026	<b>PROJECT NO:</b>	<b>APPROVED BY:</b>	
<b>PROJECT</b> Plan showing the proposed layout for Indian Bank Zonal Office at Ground Floor at ethiraj salai, Chennai.	<b>SCALE</b> N.T.S	<b>NORTH:</b> 		
	<b>REVISION DATE</b> 23.02.2026	<b>DRAWING TITLE:</b> <b>AC LAYOUT</b>		

